

Deakin Research Online

This is the published version:

Kulkarni, Hemant, Goring, Harald H. H., Diego, Vincent, Cole, Shelley, Walder, Ken R., Collier, Greg R., Blangero, John and Carless, Melanie A. 2012, Association of differential gene expression with imatinib mesylate and omacetaxine mepesuccinate toxicity in lymphoblastoid cell lines, BMC medical genomics, vol. 5, Article no. 37, pp. 1-12.

Available from Deakin Research Online:

<http://hdl.handle.net/10536/DRO/DU:30050939>

This is an open access article distributed under the terms of the attached BioMed Central License. See license for details.

Copyright : 2012, Kulkarni et al.; licensee BioMed Central Ltd.

RESEARCH ARTICLE

Open Access

Association of differential gene expression with imatinib mesylate and omacetaxine mepesuccinate toxicity in lymphoblastoid cell lines

Hemant Kulkarni^{1*}, Harald H H Göring¹, Vincent Diego¹, Shelley Cole¹, Ken R Walder², Greg R Collier³, John Blangero¹ and Melanie A Carless^{1*}

Abstract

Background: Imatinib mesylate is currently the drug of choice to treat chronic myeloid leukemia. However, patient resistance and cytotoxicity make secondary lines of treatment, such as omacetaxine mepesuccinate, a necessity. Given that drug cytotoxicity represents a major problem during treatment, it is essential to understand the biological pathways affected to better predict poor drug response and prioritize a treatment regime.

Methods: We conducted cell viability and gene expression assays to determine heritability and gene expression changes associated with imatinib and omacetaxine treatment of 55 non-cancerous lymphoblastoid cell lines, derived from 17 pedigrees. In total, 48,803 transcripts derived from Illumina Human WG-6 BeadChips were analyzed for each sample using SOLAR, whilst correcting for kinship structure.

Results: Cytotoxicity within cell lines was highly heritable following imatinib treatment ($h^2 = 0.60-0.73$), but not omacetaxine treatment. Cell lines treated with an IC20 dose of imatinib or omacetaxine showed differential gene expression for 956 (1.96%) and 3,892 transcripts (7.97%), respectively; 395 of these (0.8%) were significantly influenced by both imatinib and omacetaxine treatment. k-means clustering and DAVID functional annotation showed expression changes in genes related to kinase binding and vacuole-related functions following imatinib treatment, whilst expression changes in genes related to cell division and apoptosis were evident following treatment with omacetaxine. The enrichment scores for these ontologies were very high (mostly >10).

Conclusions: Induction of gene expression changes related to different pathways following imatinib and omacetaxine treatment suggests that the cytotoxicity of such drugs may be differentially tolerated by individuals based on their genetic background.

Keywords: Chronic myeloid leukemia, Microarray, Toxicity, Gene expression, Imatinib, Omacetaxine

* Correspondence: hkulkarn@txbiomedgenetics.org; mcarless@txbiomedgenetics.org

¹Department of Genetics, Texas Biomedical Research Institute, San Antonio, TX 78227, USA

Full list of author information is available at the end of the article

Background

Chronic myeloid leukemia (CML) represents a myeloproliferative condition characterized by a t(9;22)(q34;q11) translocation that forms the *BCR-ABL1* fusion gene [1]. The chimeric protein end-product of this gene has a dysregulated tyrosine kinase activity, which leads to disruption of several vital cellular pathways, including failure of proper apoptotic mechanisms [2,3]. The last decade has seen remarkable improvements in the treatment of CML, largely due to tyrosine kinase inhibitors like imatinib mesylate, which have now become the mainstays of CML therapy. In spite of highly encouraging reports of the protection and survival advantage conferred by imatinib treatment, [4-6] it is becoming increasingly recognized that a substantial proportion of patients acquire resistance to it (2-year incidence of resistance is ~80% in the blast phase, 40-50% in accelerated phase and 10% in the chronic phase) [7] and therefore secondary lines of treatment are essential [8]. One of the commonly used drugs in imatinib resistant cases is omacetaxine mepesuccinate, which acts by disrupting protein synthesis, degrading myeloid leukemia cell differentiation protein (MCL-1) and inducing apoptosis [9-12]. While there is a regained and renewed interest in the potential use of omacetaxine in imatinib-resistant CML cases, [1,13] full recognition of its potential is far from established.

In addition to resistance, it has been found that 3-8% of imatinib-treated subjects discontinue treatment because of the cytotoxic effects of the drug [14,15]. While the apoptotic effect of omacetaxine is known, emerging evidence suggests that imatinib can also induce cytotoxicity via apoptosis within *BCR-ABL1* negative cancers through several mechanisms, including: inhibition of DNA topoisomerases [16]; increased expression of Spred2 [17]; induction of autophagy [18,19]; and induction of complement dependent pathways [20], or Bim and Bad proteins [21,22]. However, the driving molecular mechanisms involved in imatinib- and omacetaxine-induced cytotoxicity remain largely unknown.

We therefore conducted a systematic evaluation of cytotoxicity in imatinib- and omacetaxine-treated cells. In this study we tested two hypotheses. First, we conjectured that the concentration of imatinib or omacetaxine needed to inhibit growth of non-cancerous lymphoblastoid cell lines is a heritable trait. Second, we hypothesized that inhibition of cells by these drugs ensues quantifiable and characteristic changes in gene expression. Using lymphoblastoid cell lines derived from pedigreed individuals, [23] we determined the heritability of inhibitory concentrations (IC20) of both imatinib mesylate and omacetaxine mepesuccinate and identified gene expression changes associated with drug cytotoxicity.

Methods

Cell lines and drugs

Cell lines were derived from Epstein-Barr virus-immortalized lymphoblastoid cells of pedigreed individuals participating in the San Antonio Family Heart Study [23]. All cell lines were maintained in RPMI 1640 medium containing 2 mM L-glutamine, 1X antibiotic/antimycotic, 1 mM sodium pyruvate, 1X non-essential amino acids, 10 mM HEPES and 15% FBS (Invitrogen, Carlsbad, CA) at 37°C and 5% CO₂. In total, 109 cell lines were assessed for imatinib mesylate cell viability and 113 cell lines were tested for omacetaxine mepesuccinate cell viability, obtained from 17 pedigrees (ranging in size from 6 to 10 individuals). Of these, 55 cell lines were further assessed for genome-wide gene expression changes in response to imatinib and omacetaxine treatment and for sensitivity of drug response studies. Cell lines were chosen based on familial relationships, allowing heritability of cell viability to be determined. Imatinib mesylate (LKT Laboratories, St Paul, MN) and omacetaxine mepesuccinate (ChemGenex, Melbourne, Australia) were solubilized in water at 10 mM and 10 μM concentrations, respectively, and stored at -20°C until used in experiments. Stock solutions were further diluted in water and then media for all assays.

Cell viability studies

Cell viability assays were carried out in a similar manner to previous studies [24]. Cells were initially grown in 75 cm² flasks, harvested and plated in triplicate into a 96 well clear-bottom plate at a density of 1×10⁵ cells/ml, 180 μl per well. Cells were grown for 24 hrs and then treated with varying concentrations of either imatinib mesylate or omacetaxine mepesuccinate drug (in 20 μl volume) for 72 hrs before the addition of 20 μl alamarBlue reagent (Life Technologies, Grand Island, NY). Imatinib was added at concentrations of 2 μM, 10 μM, 50 μM, 75 μM, 100 μM, 150 μM and 200 μM and omacetaxine was added at concentrations of 5nM, 10nM, 25nM, 50nM, 75nM, 100nM and 500nM. Following the addition of alamarBlue, cells were incubated for a further 24 hours and fluorescence read at 570 nm and 600 nm using the SpectraMax 340PC 384 micro plate reader (Molecular Devices, Sunnyvale, CA). Absorbance readings for the triplicate reactions were averaged to calculate percent reduction. To calculate the percent difference in reduction of the alamarBlue reagent between treated and control cells (cell viability), the following equation was used:

$$\frac{(117,216 \times \text{test well abs570nm}) - (80,586 \times \text{test well abs600nm})}{(117,216 \times \text{untreated well abs570nm}) - (80,586 \times \text{untreated well abs600nm})} \times 100 \quad (1)$$

where 117,216 is the molar extinction coefficient of alamarBlue in its oxidized form at 600 nm; 80,586 is the molar extinction coefficient of alamarBlue in its oxidized form at 570 nm; and *abs* indicates the absorbance. Graph-Pad PRISM v5 software was used to plot dose response curves and determine IC₂₀ values for both imatinib and omacetaxine for each cell line.

Gene expression assays

Each of the 55 selected cell lines was treated with either imatinib, omacetaxine or was left untreated. Each cell line was treated for 96 hours with a concentration of drug equivalent to the IC₂₀ value (calculated for each cell line individually); additional media containing the appropriate concentration of drug was added after the first 48 hours. A concentration equivalent to IC₂₀ was utilized for two reasons: i) we aimed at maintaining the viability of the majority of cells to make reliable estimates of the gene expression profiles; and ii) previously published drug toxicity studies have used this cut-off in toxicological gene expression studies [25-28]. Following drug treatment, cells were collected by centrifugation at 3,000 g for 5 minutes and RNA was extracted using the RNeasy Mini Kit (Qiagen, Valencia, CA), according to the manufacturers' instructions. RNA concentration was determined using the NanoDrop ND-1000 (Thermo-Scientific, Wilmington, DE) and integrity was assessed using the Bioanalyzer 2100 (Agilent Technologies, Santa Clara, CA). All samples were of high quality, having RNA integrity numbers (RIN) > 9.0. Anti-sense RNA (aRNA) was synthesized, amplified and purified from 500 ng total RNA following manufacturers' guidelines for the Ambion MessageAmp II-Biotin Enhanced Single Round aRNA Amplification kit (Life Technologies). A total of 1.5 µg aRNA was hybridized to Illumina Human WG-6 v3 BeadChips according to manufacturers' instructions and scanned using the Illumina® BeadArray™ 500GX Reader with Illumina® BeadScan image data acquisition software (version 2.3.0.13). To assess quality metrics of each run, several quality control procedures were implemented, including a total RNA control sample and assessment of control summary reports, which allows the user to look for variations in signal intensity, hybridization signal, background signal and the background-to-noise ratio for all samples analyzed. Illumina® BeadStudio software (version 1.5.0.34) was used for preliminary data analysis, with a standard background subtraction, to generate an output file for statistical analysis.

Statistical analysis

Analyses were conducted on two sets of experimental results. Using data from Experimental Series 1 (Figure 1), we first obtained the log fold changes (differential gene

expression) in response to imatinib and omacetaxine treatment (iFC and oFC, respectively). Raw signal intensity data generated in BeadStudio was normalized using quantile normalization (see Additional file 1) as described elsewhere [29]. For each probe, we then tested whether differential gene expression significantly deviated from zero using a paired Student's *t* test. As the dataset originated from related individuals, and to correct for the consequent within-family correlations and potential kinship effects, we tested the significance of iFC and oFC using a sporadic model of the following form:

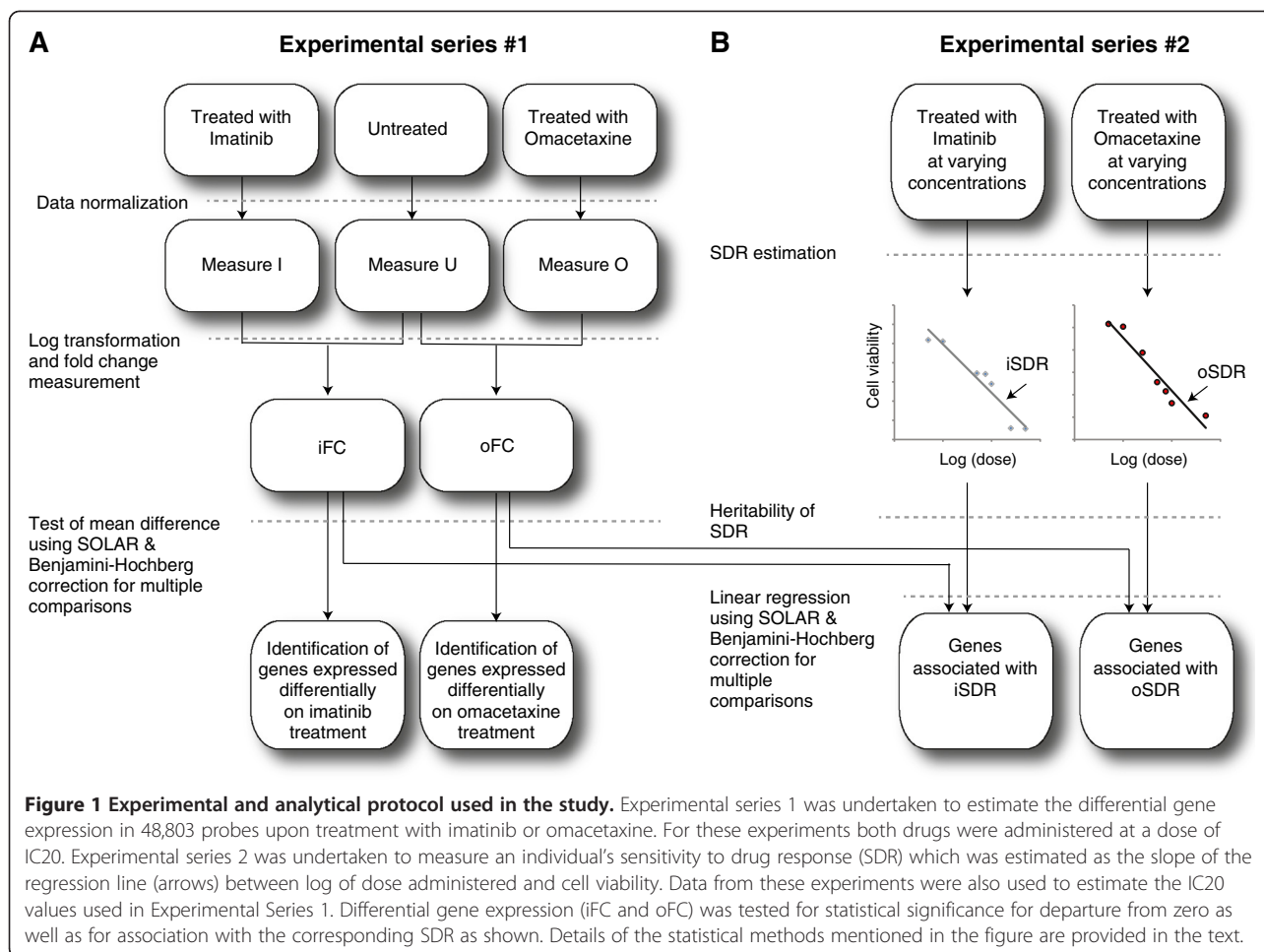
$$FC = m + \beta a + e_i \quad (2)$$

where *FC* is fold change in response to a drug, *m* is average fold change attributable to the drug treatment after accounting for kinship and covariates, β is the regression coefficient vector corresponding to the covariate matrix *a* and *e_i* is the measurement error. The covariates used in all models were age, sex, age × sex interaction, age² and age² × sex interaction. The statistical significance of *m* was tested by constraining it to zero and estimating χ^2 (degree of freedom = 1) as twice the difference between the log-likelihood from un-constrained and constrained models. We then used the Benjamini-Hochberg method to correct for multiple comparisons based on false discovery rates. For this we used the qqvalue.ado software [30] in Stata environment. Results of these analyses were depicted as volcano plots. Lastly, we used the k-means clustering method to group the significantly differentially expressed genes (using Euclidean distance) based on the mean iFC and oFC values estimated using Equation (1).

Using data from Experimental Series 2 (Figure 1), we estimated for each probe the contribution of differential gene expression to the sensitivity of drug response (SDR), a measure of how sensitive a cell line is to changes in cell viability based on drug concentration. Sensitivity of imatinib (iSDR) and omacetaxine (oSDR) response was defined as the slope of the fitted linear regression lines that used log of dose as the independent variable and cell viability as the dependent variable. To account for within-family correlations, kinship structure and the potential heritability of SDR, we ran a polygenic model for each probe as follows:

$$SDR = \mu + \beta a + g_i + e_i \quad (3)$$

where, *SDR* is the sensitivity of drug response, μ is the overall mean *SDR*, β is the regression coefficient vector corresponding to the covariate matrix *a*, *g_i* is the polygenic effect (used to estimate the heritabilities) and *e_i* is the measurement error. In addition to the same set of covariates mentioned in Equation (1) we used the differential gene expression (iFC or oFC, generated in Equation (2)) as a covariate. We then tested the statistical



significance of the regression coefficient of differential gene expression by constraining this parameter to 0 and estimating χ^2 (degree of freedom = 1) as twice the difference between the log-likelihood estimated from unconstrained and constrained models. Simultaneous associations of the differential gene expression with iSDR and oSDR for each probe were depicted using bivariate 95% confidence ellipses [31]. Between group differences were tested using the non-parametric Kruskal-Wallis test. We used k-means clustering analyses to infer the potential functional relevance of differentially expressed genes. For this, we used the Euclidean distance between pairs of points as the dissimilarity measure and employed the Stata program Cluster, which uses the iterative refinement approach for extracting the cluster structure to generate a pre-set number of clusters.

All genetic analyses were conducted using the SOLAR software package [32] (Version 6.3.7, Texas Biomedical Research Institute, San Antonio, TX), incorporating an additional inverse normal transformation on each trait. Statistical analyses were done using the Stata software package (Version 12.0, Stata Corp, College Station, TX).

All statistical tests were conducted using global type I error rates of 0.05.

Validation of microarray results by qPCR

To validate results from the Illumina Human WG-6 v3 BeadChips, we performed real-time reverse transcription polymerase chain reaction (quantitative PCR, qPCR) analysis on selected transcripts. We utilized *HPRT1* as an endogenous control as our microarray experiments demonstrated relative stability of gene expression across all samples when analyzed with NormFinder [33]. Taqman gene expression assays were obtained from Life Technologies (Grand Island, NY) for *BCL2L10* (Hs00368095_m1), *CTSB* (Hs00947433_m1), *HPRT1* (Hs99999909_m1), *MUL1* (Hs00226069_m1), *OIP5* (Hs00299079_m1) and *TNFAIP3* (Hs00234713_m1). The Illumina probe identifiers that corresponded to these six genes were ILMN_1749096, ILMN_1696360, ILMN_2056975, ILMN_1675055, ILMN_1759277, and ILMN_1707591, respectively. cDNA synthesis was carried out using the High Capacity cDNA Reverse Transcription Kit with RNase Inhibitor (Life Technologies), according to the

manufacturers' instructions. q-PCR analysis of each of the gene expression assays was carried out in a 10 µl reaction volume using Gene Expression Master Mix on an Applied Biosystems 7900HT instrument (Life Technologies), according to the manufacturers' instructions. Baseline and cycle threshold (CT) were determined automatically using SDS RQ Manager software (Life Technologies). Each sample was assessed in triplicate and if the CT standard deviation for triplicate reactions was >0.3 then only duplicate reactions were assessed, if the standard deviation of duplicate reactions also exceeded 0.3, the sample was excluded from analysis. Relative quantitation was calculated using the $2^{-\Delta\Delta CT}$ method in SDS RQ Manager [34]. To examine the correlation between microarray and qPCR results we used Spearman's or Pearson's correlation coefficients, based on the underlying distribution of the variable. In order to ensure results were directly comparable for this association, we corrected the microarray data for the *HPRT1* gene expression.

Results

Assessment of heritability

This study is based on lymphoblastoid cell lines derived from 55 individuals belonging to 17 pedigrees. The kinships included siblings (72), third degree relations (15) and an identical sib pair. A total of 48,803 probes, whose intensities were derived from the microarray experiments, were used for analysis. We first examined the heritability of the IC values obtained from treatment of the cell lines with imatinib (n = 109) and omacetaxine (n = 113). Although both drugs influenced cell viability in a dose-dependent manner, only the IC values for imatinib demonstrated high heritability (range: 0.60 – 0.73), IC values for omacetaxine were consistently non-heritable (Table 1).

Differential gene expression upon treatment

We next examined whether there was a significant difference in gene expression following treatment with either imatinib or omacetaxine at an IC20 equivalent dose. For imatinib, the IC20 values ranged from 8.7×10^{-6} M to 8.7×10^{-5} M and for omacetaxine, the IC20 values ranged from 1.0×10^{-8} M to 2.2×10^{-7} M. Volcano plots (Figure 2A and 2B) indicate numerous statistically significant differences in gene expression upon treatment with both drugs. The mean enrichment score, defined as the average $-\log_{10}$ p-value, for all 48,803 probes was 0.09 (SD 0.66) after imatinib treatment and 0.46 (SD 1.85) after omacetaxine treatment; indicating a statistically significant difference in gene expression induction between imatinib and omacetaxine treatment (paired Student's $t = 44.886$, degrees of freedom = 48,802, tails = 2, $p < 1 \times 10^{-22}$). Following imatinib treatment, 956 probes (1.96%) demonstrated differential gene expression, whilst 3,892 probes (7.97%)

Table 1 Heritability of the inhibitory concentration of experimental drugs

Threshold (%)	Imatinib			Omacetaxine		
	Mean dose ($\times 10^{-5}$ M)	h^2	P	Mean dose ($\times 10^{-8}$ M)	h^2	p
10	1.48	0.60	5.76×10^{-4}	1.04	0.00	0.50
20	3.32	0.60	5.81×10^{-4}	2.35	0.00	0.50
30	5.70	0.60	5.81×10^{-4}	4.03	0.00	0.50
40	8.86	0.60	5.81×10^{-4}	6.27	0.00	0.50
50	13.29	0.60	5.73×10^{-4}	9.40	0.00	0.50
60	19.03	0.73	1.92×10^{-5}	14.10	0.00	0.50
70	31.00	0.60	5.73×10^{-4}	21.93	0.00	0.50
80	53.14	0.60	5.81×10^{-4}	37.59	0.00	0.50
90	119.60	0.60	5.74×10^{-4}	84.58	0.00	0.50

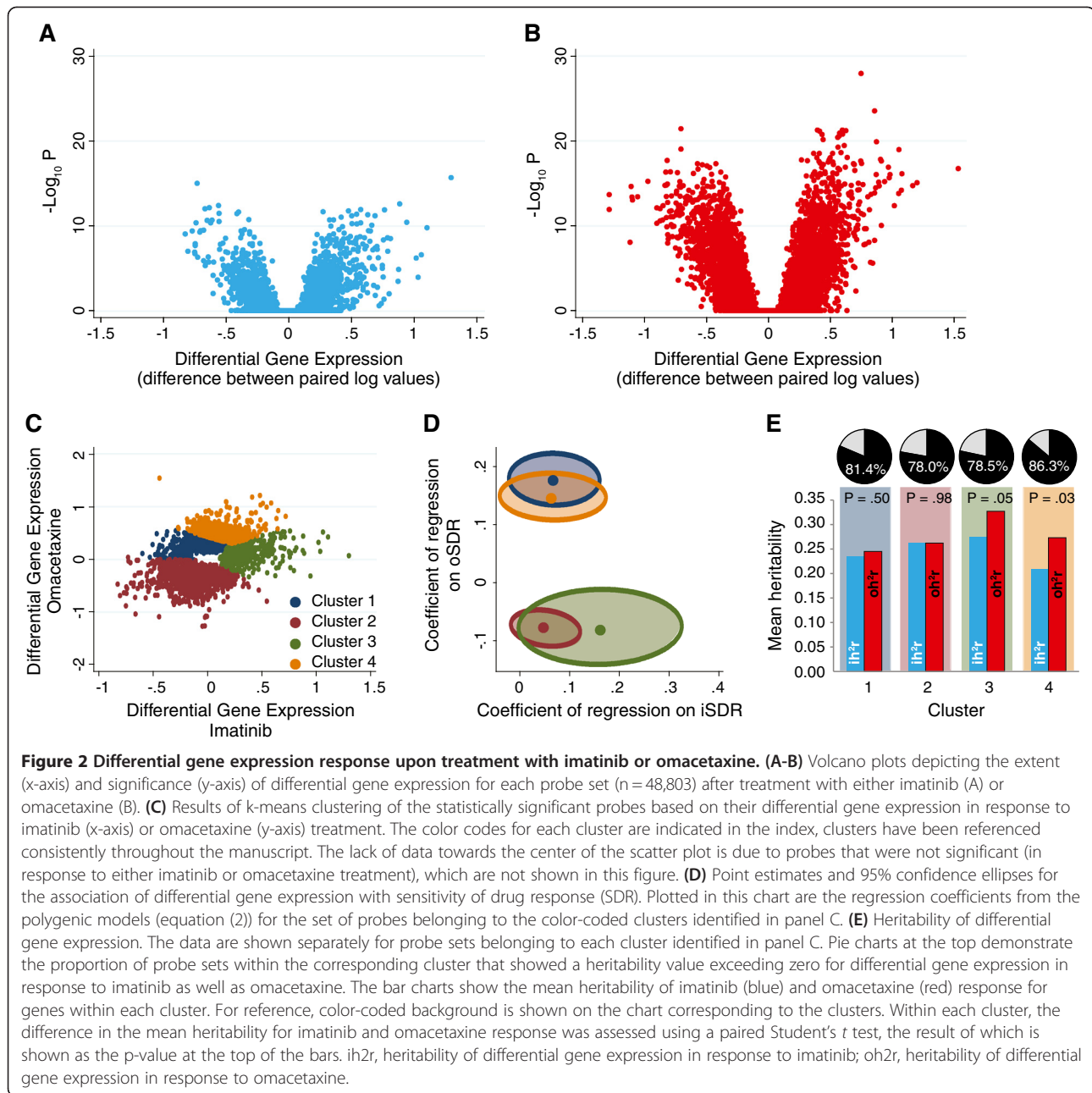
h^2 , heritability.

showed differential gene expression following omacetaxine treatment (FDR corrected p-values <0.05). A total of 395 of these probes (0.8%) were significantly influenced by both imatinib and omacetaxine treatment. We reduced the dimensionality of the dataset by using k-means clustering to generate four non-overlapping clusters, which highlighted those probes showing differential gene expression following treatment with imatinib or omacetaxine (Figure 2C).

Probes within cluster 1 (n = 1,378, 30.95%) were mildly down regulated by imatinib and mildly up regulated by omacetaxine; those in cluster 2 (n = 2,005, 45.03%) were down regulated by both imatinib and omacetaxine; those in cluster 3 (n = 428, 9.61%) were mainly up regulated by imatinib and those in cluster 4 (n = 642, 14.42%) were mainly up regulated by omacetaxine. Corroborating these conceptual inferences, the mean iFC values and the enrichment scores [mean $-\log_{10}$ (FDR-corrected p-value)] for probes in the four clusters were -0.02 and 0.35 for cluster 1; -0.08 and 0.63 for cluster 2; 0.36 and 4.20 for cluster 3; and 0.13 and 0.67 for cluster 4. The mean oFC values and enrichment scores for these clusters were 0.26 and 4.31 for cluster 1; -0.35 and 5.05 for cluster 2; 0.10 and 0.89 for cluster 3 and 0.5 and 8.44 for cluster 4.

Functional annotation of identified genes

We next considered whether these unsupervised and unbiased clusters of probes indicated any underlying functional similarities. First, we used the DAVID[®] functional annotation clustering tool [35,36] to map probes that showed significant differential gene expression onto Gene Ontology (GO) terms (Table 2); 83% – 89% of the significantly identified probes in various clusters were mapped (overall mapped fraction 85.4%). The full functional annotation of all significant probes is provided in Additional file 2 for each cluster (see Additional file 2).



Interestingly, the top 5 functional annotation groups that mapped onto the four clusters identified in this study varied substantially with differing enrichment scores. For instance, omacetaxine treatment appeared consistent with reduced cell division and increased apoptosis while increased kinase binding and vacuole-related functions were associated with an up regulation in response to imatinib.

Second, we examined whether each significantly up regulated probe was associated with iSDR and oSDR. We found that probes in clusters 1 and 4 did not differ

from each other with respect to their relation with iSDR and oSDR as indicated by largely overlapping 95% confidence ellipses (Figure 2D). Similarly, the confidence ellipses of clusters 2 and 3 overlapped to a large extent. However, the 95% confidence ellipses of clusters 1 and 4 differed significantly from those of clusters 2 and 3. The 95% confidence ellipses for clusters 1 and 4 (which indicate probes that were significantly up regulated by omacetaxine but had variable response to imatinib) were more positively correlated with oSDR than the remaining clusters. Imatinib treatment did not appear to make a

Table 2 Concordance of functional annotation cluster (using DAVID®) with the four clusters identified based on differential gene expression

Description	Cluster 1	Cluster 2	Cluster 3	Cluster 4
Number of genes				
Total	1378	2005	428	642
Identified as human by DAVID	1332	1932	416	617
Mapped by DAVID with GO terms	1187 (86.1%)	1704 (85.0%)	380 (88.8%)	532 (82.9%)
Functional cluster rank (enrichment score*)				
1	Mitochondria (12.08)	Mitosis (24.40)	Vacuole (10.18)	Anti-apoptosis (2.72)
2	Ribosomes (7.72)	Kinetochores (16.34)	Endocytosis (2.82)	Kinase binding (2.67)
3	Catabolism (6.53)	Intracellular organelle (12.53)	Cell fraction (2.56)	Apoptosis regulation (2.59)
4	Intracellular organelle (4.80)	DNA Replication (11.96)	Metal ion binding (2.37)	Intracellular organelle (2.25)
5	Ubiquitination (4.10)	DNA Repair (11.85)	Lysosome (1.86)	Metal ion binding (2.05) and Tyrosine kinase activity (2.05)

DAVID Database for Annotation, Visualization and Integrated Discovery; GO gene ontology. enrichment scores are the average $-\log_{10}$ p-values for the genes loading onto the specified functional cluster.

statistically significant difference in association with iSDR. In effect, the probes could be clustered into only two discrete groups based on their regression on to iSDR and oSDR.

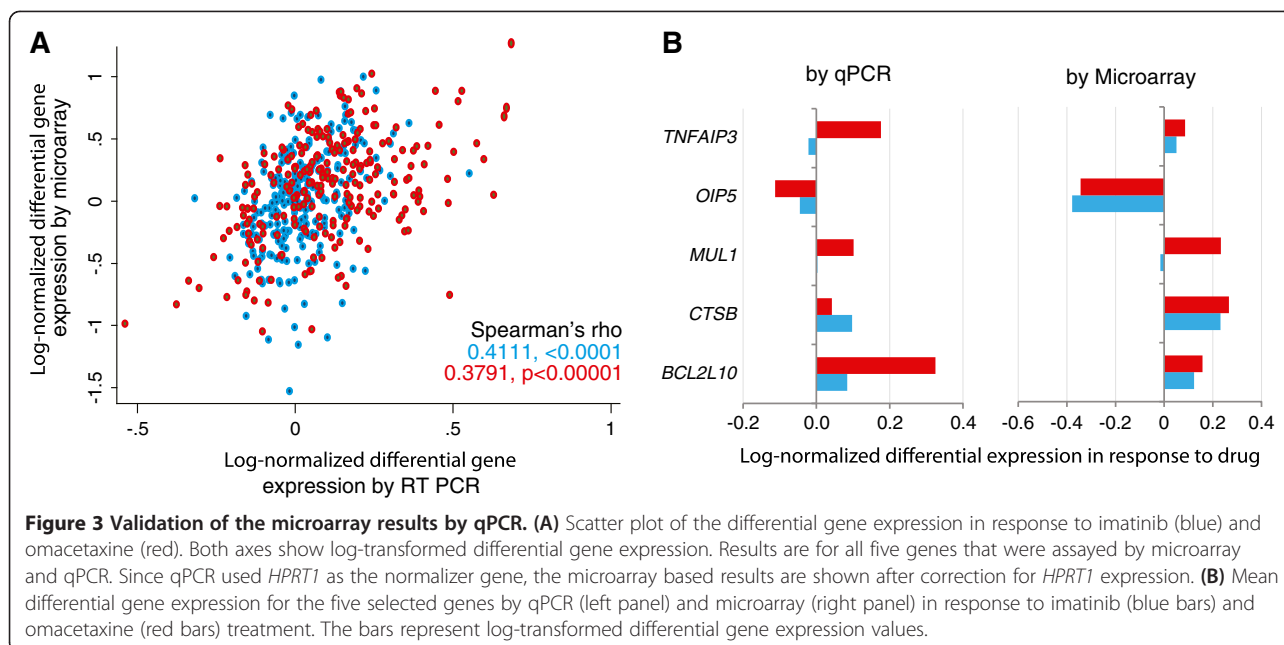
Third, using polygenic models, we found that differential gene expression in response to imatinib (ih^2r) and omacetaxine (oh^2r) for the majority of probes had measurable (that is exceeded zero) heritability (Figure 2E). In probes with a measurable heritability, the estimates of oh^2r were significantly higher than those for ih^2r for those probes grouped in clusters 3 ($p = 0.05$) and 4 ($p = 0.03$). These observations indicate that gene response to omacetaxine was more heritable than gene response to imatinib, especially in clusters 3 and 4.

Previously, we had identified 750 (3.82%) *cis*-regulated genes (*cis*-LOD > 3) within a subset of 19,648 transcripts whose expression was measured in lymphocytes of individuals within the San Antonio Family Heart Study [29]. Of these *cis*-regulated transcripts, we identified 41 (5.73%), 57 (5.35%), 8 (3.51%) and 14 (4.42%) that were present in clusters 1–4, respectively. The number of *cis*-regulated transcripts was significantly higher in clusters 1 ($\chi^2 = 6.81$, $p = 0.009$) and 2 ($\chi^2 = 6.54$, $p = 0.011$), as compared to the overall expected proportion of *cis*-regulated genes (3.82% as mentioned above). Genes in

clusters 3 and 4 did not demonstrate a systematic difference in the proportion of *cis*-regulated genes ($p = 0.810$ and 0.587 , respectively). Thus, the genes that were down regulated by imatinib treatment (clusters 1 and 2) contained a significantly higher proportion of *cis*-regulated genes.

Validation of microarray results

We chose five representative genes within the four clusters identified from the microarray results and conducted qPCR assays to validate the differential expression of these genes in response to imatinib and omacetaxine treatment. Amplification plots for a representative sample for all five genes are shown in Supplementary Figure 2 (see Additional file 3). Comparison between the microarray and qPCR results indicated a statistically significant positive correlation (Figure 3A), showing that gene expression results derived from the two assays varied in similar directions. However, the gene-specific correlations shown in Supplementary Table 2 (see Additional file 4) demonstrate variability of correlation across genes. Although not always significant, the gene expression changes seen between our qPCR and microarray results were typically correlated. To better examine whether the two assays demonstrate similar patterns of gene expression changes, we estimated the mean differential expression of *TNFAIP3*, *OIP5*, *MULL1*,



CTSB and *BCL2L10* derived from each method with the goal of replicating the patterns of differential expression. We found that the direction of change in gene expression was the same between the two assays for all five genes following omacetaxine treatment, but only 3 of the five genes following imatinib treatment (Figure 3B); qPCR results for *MUL1* and *TNFAIP3* did not corroborate the microarray results for imatinib treatment. The Pearson's correlation coefficient in the mean differential gene expression estimated by microarray and qPCR was 0.63. Our qPCR results therefore demonstrate a direction of effect correlation with the results from microarray experiments.

Differential gene expression and sensitivity of response

We considered the comparative strength of association of differential gene expression (iFC or oFC) with the sensitivity of drug response (iSDR or oSDR, respectively). For this we selected all probes which showed a FDR-corrected statistically significant correlation between FC and SDR values. We identified 21 genes that showed a significant association between iFC and iSDR and 13 genes that showed a significant association between oFC and oSDR. We annotated these genes using the GeneGO tool (Table 3). Several interesting candidate genes, such as *STAT1*, *GPS1*, *YY1*, *CYFIP2*, and *CYP1B1*, *PRPF19*, *KNTC1*, *GP2* and *EDN1*, which are known to partake in important signaling pathways, were identified. We also found that there was a significant positive correlation between oFC and oSDR ($p = 0.004$) but not for iFC and iSDR (Figure 4).

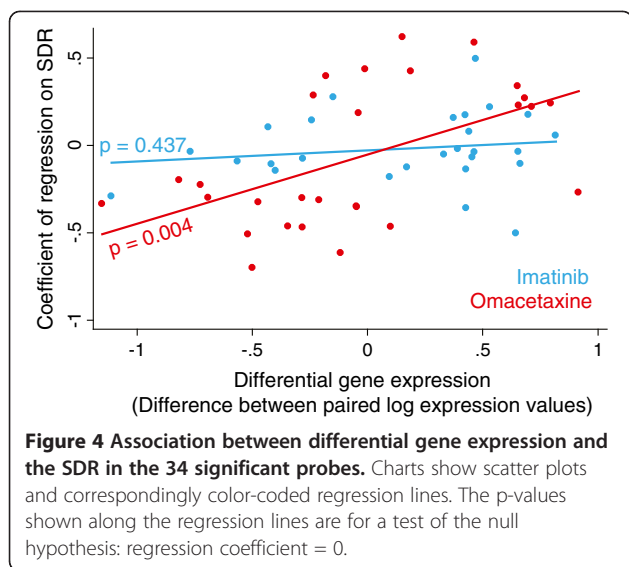
Discussion

Our study made three novel and interesting observations. First, inhibitory concentration values following treatment with imatinib were highly heritable, although this was not seen for treatment with omacetaxine. This finding implies that in a clinical scenario, determination of a toxic dose of omacetaxine would not need to consider potential familial and heritable influences of drug cytotoxicity. Second, differential gene expression in response to omacetaxine was stronger and more widespread in the genome than for imatinib. Third, the differential gene expression after omacetaxine exposure was a significant determinant of an individual's sensitivity of drug response (defined as the slope of regression line between cell viability and log of drug concentration) but a similar association was not found in the context of imatinib treatment. Together, this suggests that while the dose required to induce cell death is not heritable for omacetaxine, an individual's sensitivity of genomic response to a fixed dose of this drug is heritable. In contrast, while imatinib toxicity was highly heritable, the extent of genomic response was more subdued and was not predictive of the sensitivity of an individual's response to a fixed dose of imatinib. These findings not only demonstrate the differences between the toxicity profiles of imatinib and omacetaxine, but also point towards the possibility of successfully using gene-agnostic drugs as a secondary line of treatment in cases of imatinib resistance.

Functional annotation confirmed results from previous studies that identified kinase binding, apoptosis and vacuole/lysosome related genes as targets of imatinib

Table 3 Annotation of the 34 genes that were differentially expressed upon treatment as well as associated with SDR

Probe ID	Gene symbol	Gene name	Cluster	iFC	oFC	Pathways
ILMN_1691364	<i>STAT1</i>	Signal transducer and activator of transcription 1, 91 kDa	1	-0.1071	0.2270	IFN α / β / γ ; oncostatin M, Thrombopoietin; Angiopoetin, PDGF; IL-1/IL-9/IL-22;/IL23; EGFR; p53; SUMO-1; Leptin
ILMN_1700028	<i>C9orf156</i>	Chromosome 9 open reading frame 156	1	-0.0526	0.2686	
ILMN_1747771	<i>MAEA</i>	Macrophage erythroblast attacher	1	-0.0370	0.2202	
ILMN_1751803	<i>LSM10</i>	LSM10, U7 small nuclear RNA associated	1	-0.0924	0.1841	
ILMN_1770892	<i>YY1</i>	YY1 transcription factor	1	0.0556	0.2401	TGF- β signaling, NOTCH signaling, p53 signaling
ILMN_2258268	<i>GLRX2</i>	Glutaredoxin 2	1	-0.1088	0.2979	
ILMN_2309228	<i>GPS1</i>	G protein pathway suppressor 1	1	0.0364	0.3378	
ILMN_1659753	<i>LAMP2</i>	Lysosomal-associated membrane protein 2	2	0.0400	-0.2695	
ILMN_1677691	<i>GP2</i>	Glycoprotein 2 (zymogen granule membrane)	2	0.0012	-0.3267	Integrin inside-out signaling
ILMN_1682775	<i>EDN1</i>	Endothelin 1	2	-0.5040	-0.4670	Leptin signaling via JAK/STAT & MAPK, EGFR transactivation, IL-1 signaling, EDRNA signaling
ILMN_1695058	<i>SLC38A5</i>	Solute carrier family 38, member 5	2	-0.1257	-0.2268	
ILMN_1703906	<i>HJURP</i>	Holliday junction recognition protein	2	-0.0682	-0.6162	
ILMN_1707591	<i>TNIP3</i>	TNFAIP3 interacting protein 3	2	-0.3585	-0.5433	
ILMN_1713952	<i>C1orf106</i>	Chromosome 1 open reading frame 106	2	-0.0368	-0.3012	
ILMN_1732516	<i>KNTC1</i>	Kinetochore associated 1	2	-0.0216	-0.3534	Spindle assembly
ILMN_1769545	<i>PRPF19</i>	PRP19/PSO4 pre-mRNA processing factor 19 homolog (<i>S. cerevisiae</i>)	2	-0.0770	-0.3237	NOTCH signaling
ILMN_1774077	<i>GBP2</i>	Guanylate binding protein 2, interferon-inducible	2	-0.0388	-0.4636	
ILMN_1849494	<i>EFR3B</i>	EFR3 homolog B (<i>S. cerevisiae</i>)	2	-0.0256	-0.4698	
ILMN_1868655	<i>AI916641</i>		2	-0.1451	-0.4635	
ILMN_1898692	<i>BI254341</i>		2	-0.2912	-0.3491	
ILMN_1912827	<i>CB157495</i>		2	-0.1382	-0.5097	
ILMN_2103685	<i>DEPDC1B</i>	DEP domain containing 1B	2	-0.1807	-0.7007	
ILMN_2230162	<i>FLJ44124</i>	Hypothetical LOC641737	2	0.0233	-0.3135	
ILMN_2336595	<i>ACSS2</i>	Acyl-CoA synthetase short-chain family member 2	2	0.1570	-0.5157	
ILMN_2384544	<i>ADAM15</i>	ADAM metallopeptidase domain 15	2	0.2186	-0.3365	
ILMN_1677200	<i>CYFIP2</i>	Cytoplasmic FMR1 interacting protein 2	3	0.3287	-0.2998	G-protein signaling RAC1
ILMN_1724437	<i>GCAT</i>	Glycine C-acetyltransferase (2-amino-3-ketobutyrate coenzyme A ligase)	3	0.2763	-0.1991	
ILMN_1789436	<i>AK091207</i>		3	0.4950	0.2848	
ILMN_2392352	<i>CTPS2</i>	CTP synthase II	3	0.1718	0.0349	
ILMN_1664798	<i>GRHPR</i>	Glyoxylate reductase/hydroxypyruvate reductase	4	0.1026	0.4346	
ILMN_1693338	<i>CYP1B1</i>	Cytochrome P450, family 1, subfamily B, polypeptide 1	4	0.1427	0.4242	Benzopyrene, estradiol and retinol metabolism
ILMN_1764361	<i>DUSP16</i>	Dual specificity phosphatase 16	4	0.2176	0.6187	p53; Erk
ILMN_1779428	<i>C12orf68</i>	Chromosome 12 open reading frame 68	4	0.0770	0.3965	
ILMN_1794956	<i>BBS9</i>	Bardet-Biedl syndrome 9	4	0.1743	0.5875	



treatment [37,38]. It is noteworthy that a recent genome-wide association study in yeast identified the vacuolar proton transporter ATPase (V-ATPase) protein, which maintains vacuolar pH, as an important target of imatinib action [39]. Also, our results indicate that JAK/STAT, MAPK, Akt, Leptin and NOTCH signaling pathways may be perturbed by both imatinib and omacetaxine (Table 3), findings that have been observed in previous studies [40-46]. However, the fact that these pathways were implicated in the list of the 34 genes associated with both differential gene expression and sensitivity to drug response is a novel finding.

Limitations

In addition to the limitations implicit in any microarray study, our study has further limitations. First, this study was conducted in EBV-transformed lymphoblastoid cell lines and therefore it should be noted that the differential gene expression being ascribed to drug treatment are on the background of an EBV transformation, which may not truly reflect clinical changes. It is noteworthy that imatinib can inhibit the virus-specific proliferation of CD8⁺ T cells such that there are varying degrees of this inhibitory effect to peptides derived from cytomegalovirus or EBV [47]. It has also been reported that one of the manifestations of imatinib resistance is EBV-positive cutaneous B-cell lymphoproliferative disease [48,49]. Given that these cell lines were all generated in an identical manner, we do not anticipate that all findings within this study would be a consequence of such manifestations. Consistent differential gene expression changes shown across all cell lines are likely to represent true gene expression changes, unrelated to the effect of EBV transformation, however caution should be taken in the interpretation of these results.

Evidence demonstrating an interaction between omacetaxine and EBV is currently not available.

Second, the microarray studies were conducted by treating cell lines for 4 days with a preselected concentration equivalent to the IC₂₀ dose for each drug (to avoid excessive cell death). It is possible that clinical gene expression changes would be different from those identified in this study, dependent on the dose chosen and length of treatment. Although our study does not permit interpretation about dose-related differential gene expression, we demonstrate here, examples of pathways that are likely to be altered by imatinib or omacetaxine treatment, many of which have very plausible biological roles in such drug cytotoxicity.

Third, even though the correlations between results of qPCR and microarray estimates can be considered to be modest, these correlations are consistent with those reported in literature [50]. Indeed, several sources of variation like degree of differential expression, spot intensity, array averaging and filtering, probe design, binding sites and variances in amplification methodologies prevent a direct validation of microarray results by qPCR. Still, our qPCR results showed moderate concordance with the microarray assay.

We performed this study to gain a better understanding of the effects of imatinib and omacetaxine treatment on non-cancerous cells in order to identify pathways that might be consistent with drug cytotoxicity. Our results can therefore only be interpreted as potential leads for further research into the cytotoxic effects of two drugs commonly used to treat CML.

Conclusions

We have identified genetic signatures of imatinib and omacetaxine toxicity in non-cancerous cell lines derived from closely related individuals. Identification of the pathways induced by either imatinib or omacetaxine treatment on non-cancerous cell lines may lead to the possibility of early detection of subjects who might be more prone to develop drug cytotoxicity. To our knowledge such a microarray study has not been conducted thus far. Future research should focus on the candidate genes identified in this study as potential determinants of drug toxicity in the treatment of CML. Investigation of such gene expression profiles in CML patients would be particularly interesting, and may be useful in determining a cost/benefit ratio of a treatment regime.

Additional files

Additional file 1: Figure S1. Quantile normalization of gene expression data.

Additional file 2: Table S1. Clusterwise functional annotation of the significant probes.

Additional file 3: Figure S3. Representative amplification plots from RT-PCR for selected genes.

Additional file 4: Table S2. Gene-specific correlation between the results of q-PCR and microarray.

Abbreviations

CML: Chronic myeloid leukemia; MCL-1: Myeloid leukemia cell differentiation protein; FC: Fold change; SDR: Sensitivity of drug response; IC: Inhibitory concentration; FDR: False discovery rate; GO: Gene ontology; qPCR: Quantitative polymerase chain reaction.

Competing Interests

The authors declare that they have no competing interests.

Authors' contributions

JB, KRW, GRC and MAC designed the study. SC was responsible for overseeing the generation of cell lines. MAC performed all molecular analyses HK, VD, HHHG and JB performed statistical analysis. HK, MAC and JB wrote the manuscript. All coauthors read and approved the final manuscript.

Acknowledgments

Financial support for this study was provided by the Max and Minnie Tomerlin Voelcker Fund, the National Heart, Lung and Blood Institute (PO1 HL045522, PI: Dr. Blangero) and the National Institute of Mental Health (R37 MH059490, PI: Dr. Blangero). This investigation was conducted in the facilities constructed with support from Research Facilities Improvement Program Grant Number C06 RR017515 from the National Center for Research Resources, National Institutes of Health.

Author details

¹Department of Genetics, Texas Biomedical Research Institute, San Antonio, TX 78227, USA. ²Deakin University, Geelong, VIC, Australia. ³Barwon Biotechnology, Geelong, VIC, Australia.

Received: 22 March 2012 Accepted: 16 August 2012

Published: 23 August 2012

References

- Santos FP, Quintas-Cardama A: **New drugs for chronic myelogenous leukemia.** *Curr Hematol Malig Rep* 2011, **6**:96–103.
- Tang M, Gonen M, Quintas-Cardama A, Cortes J, Kantarjian H, Field C, Hughes TP, Branford S, Michor F: **Dynamics of chronic myeloid leukemia response to long-term targeted therapy reveal treatment effects on leukemic stem cells.** *Blood* 2011, **118**:1622–1631.
- Quintas-Cardama A, Cortes J: **Molecular biology of bcr-abl1-positive chronic myeloid leukemia.** *Blood* 2009, **113**:1619–1630.
- Deininger MW: **Milestones and monitoring in patients with CML treated with imatinib.** *Hematology Am Soc Hematol Educ Program* 2008, **2008**:419–426.
- Baccarani M, Cortes J, Pane F, Niederwieser D, Saglio G, Apperley J, Cervantes F, Deininger M, Gratwohl A, Guilhot F, et al: **Chronic myeloid leukemia: an update of concepts and management recommendations of European LeukemiaNet.** *J Clin Oncol* 2009, **27**:6041–6051.
- Saglio G, Baccarani M: **First-line therapy for chronic myeloid leukemia: new horizons and an update.** *Clin Lymphoma Myeloma Leuk* 2010, **10**:169–176.
- Deininger M: **Resistance and relapse with imatinib in CML: causes and consequences.** *J Natl Compr Canc Netw* 2008, **6**(Suppl 2):S11–S21.
- Jabbour E, Cortes J, Giles F, O'Brien S, Kantarjian H: **The clinical challenge of imatinib resistance in chronic myeloid leukemia: emerging strategies with new targeted agents.** *Targ Oncol* 2006, **1**:186–196.
- Coude MM, Luyckx O, Cariou ME, Maarek O, Dombret H, Cayuela JM, Rea D: **Undetectable molecular residual disease after omacetaxine and nilotinib combination therapy in an imatinib-resistant chronic myeloid leukaemia patient harbouring the BCR-ABL1 T315I gatekeeper mutation.** *Br J Haematol* 2012, **157**:407–410.
- Kim TD, Frick M, le Coutre P: **Omacetaxine mepesuccinate for the treatment of leukemia.** *Expert Opin Pharmacother* 2011, **12**:2381–2392.
- Allan EK, Holyoake TL, Craig AR, Jorgensen HG: **Omacetaxine may have a role in chronic myeloid leukaemia eradication through downregulation of Mcl-1 and induction of apoptosis in stem/progenitor cells.** *Leukemia* 2011, **25**:985–994.
- Quintas-Cardama A, Cortes J: **Omacetaxine mepesuccinate—a semisynthetic formulation of the natural antitumoral alkaloid homoharringtonine, for chronic myelocytic leukemia and other myeloid malignancies.** *IDrugs* 2008, **11**:356–372.
- Wetzler M, Segal D: **Omacetaxine as an anticancer therapeutic: what is old is new again.** *Curr Pharm Des* 2011, **17**:59–64.
- Smith BD: **Imatinib for chronic myeloid leukemia: the impact of its effectiveness and long-term side effects.** *J Natl Cancer Inst* 2011, **103**:527–529.
- Seiter K: **Update of recent studies in chronic myeloid leukemia.** *J Hematol Oncol* 2009, **2**(Suppl 1):A2.
- Baran Y, Zencir S, Cakir Z, Ozturk E, Topcu Z: **Imatinib-induced apoptosis: a possible link to topoisomerase enzyme inhibition.** *J Clin Pharm Ther* 2011, **36**:673–679.
- Liu XY, Yang YF, Wu CT, Xiao FJ, Zhang QW, Ma XN, Li QF, Yan J, Wang H, Wang LS: **Spred2 is involved in imatinib-induced cytotoxicity in chronic myeloid leukemia cells.** *Biochem Biophys Res Commun* 2010, **393**:637–642.
- Shingu T, Fujiwara K, Bogler O, Akiyama Y, Moritake K, Shinojima N, Tamada Y, Yokoyama T, Kondo S: **Stage-specific effect of inhibition of autophagy on chemotherapy-induced cytotoxicity.** *Autophagy* 2009, **5**:537–539.
- Shingu T, Fujiwara K, Bogler O, Akiyama Y, Moritake K, Shinojima N, Tamada Y, Yokoyama T, Kondo S: **Inhibition of autophagy at a late stage enhances imatinib-induced cytotoxicity in human malignant glioma cells.** *Int J Cancer* 2009, **124**:1060–1071.
- Nemati F, Mathiot C, Grandjean I, Lantz O, Bordier V, Dewulf S, Ekue R, Di Santo JP, Poupon MF, Decaudin D: **Imatinib mesylate reduces rituximab-induced tumor-growth inhibition in vivo on Epstein-Barr virus-associated human B-cell lymphoma.** *Anticancer drugs* 2007, **18**:1029–1037.
- Kuroda J, Kimura S, Strasser A, Andreeff M, O'Reilly LA, Ashihara E, Kamitsuji Y, Yokota A, Kawata E, Takeuchi M, et al: **Apoptosis-based dual molecular targeting by INNO-406, a second-generation Bcr-Abl inhibitor, and ABT-737, an inhibitor of antiapoptotic Bcl-2 proteins, against Bcr-Abl-positive leukemia.** *Cell Death Differ* 2007, **14**:1667–1677.
- Kuroda J, Puthalakath H, Cragg MS, Kelly PN, Bouillet P, Huang DC, Kimura S, Ottmann OG, Druker BJ, Villunger A, et al: **Bim and Bad mediate imatinib-induced killing of Bcr/Abl-leukemic cells, and resistance due to their loss is overcome by a BH3 mimetic.** *Proc Natl Acad Sci U S A* 2006, **103**:14907–14912.
- Mitchell BD, Kammerer CM, Blangero J, Mahaney MC, Rainwater DL, Dyke B, Hixson JE, Henkel RD, Sharp RM, Comuzzie AG: **Genetic and environmental contributions to cardiovascular risk factors in Mexican Americans. The San Antonio Family Heart Study.** *Circulation* 1996, **94**:2159–2170.
- Watters JW, Kraja A, Meucci MA, Province MA, McLeod HL: **Genome-wide discovery of loci influencing chemotherapy cytotoxicity.** *Proc Natl Acad Sci U S A* 2004, **101**:11809–11814.
- Sarma SN, Kim YJ, Ryu JC: **Gene expression profiles of human promyelocytic leukemia cell lines exposed to volatile organic compounds.** *Toxicology* 2010, **271**:122–130.
- Rojas M, Wright CW, Pina B, Portugal J: **Genomewide expression profiling of cryptolepine-induced toxicity in *Saccharomyces cerevisiae*.** *Antimicrob Agents Chemother* 2008, **52**:3844–3850.
- Hooyberghs J, Schoeters E, Lambrechts N, Nelissen I, Witters H, Schoeters G, Van Den Heuvel R: **A cell-based in vitro alternative to identify skin sensitizers by gene expression.** *Toxicol Appl Pharmacol* 2008, **231**:103–111.
- Krishnaswamy R, Devaraj SN, Padma VV: **Lutein protects HT-29 cells against Deoxyribose-induced oxidative stress and apoptosis: prevention of NF-kappaB nuclear localization and down regulation of NF-kappaB and Cyclo-Oxygenase-2 expression.** *Free Radic Biol Med* 2010, **49**:50–60.
- Goring HH, Curran JE, Johnson MP, Dyer TD, Charlesworth J, Cole SA, Jowett JB, Abraham LJ, Rainwater DL, Comuzzie AG, et al: **Discovery of expression QTLs using large-scale transcriptional profiling in human lymphocytes.** *Nat Genet* 2007, **39**:1208–1216.
- Newson R, Team AS: **Software update: st0035_1: Multiple-test procedures and smile plots.** *Stata J* 2010, **10**:691–692.
- Alexanderson A: **ellip.** *Stata Bulletin* 2010, **46**:gr32.
- Almasy L, Blangero J: **Multipoint quantitative-trait linkage analysis in general pedigrees.** *Am J Hum Genet* 1998, **62**:1198–1211.

33. Ledet-Jensen CL, Ørntoft T: Normalization of real-time quantitative RT-PCR data: a model based variance estimation approach to identify genes suited for normalization – applied to bladder- and colon-cancer datasets. *Cancer Res* 2004, **64**:5245–5250.
34. Livak KJ, Schmittgen TD: Analysis of relative gene expression data using real-time quantitative PCR and the $2^{-\Delta\Delta C(T)}$ method. *Methods* 2001, **25**:402–408.
35. da Huang W, Sherman BT, Tan Q, Collins JR, Alvord WG, Roayaei J, Stephens R, Baseler MW, Lane HC, Lempicki RA: The DAVID gene functional classification tool: a novel biological module-centric algorithm to functionally analyze large gene lists. *Genome Biol* 2007, **8**:R183.
36. da Huang W, Sherman BT, Tan Q, Kir J, Liu D, Bryant D, Guo Y, Stephens R, Baseler MW, Lane HC, Lempicki RA: DAVID Bioinformatics Resources: expanded annotation database and novel algorithms to better extract biology from large gene lists. *Nucleic Acids Res* 2007, **35**:W169–175.
37. Wang Y, Yang Z, Zhao X: Honokiol induces paraptosis and apoptosis and exhibits schedule-dependent synergy in combination with imatinib in human leukemia cells. *Toxicol Mech Methods* 2010, **20**:234–241.
38. Basciani S, Vona R, Matarrese P, Ascione B, Mariani S, Cauda R, Gnessi L, Malorni W, Straface E, Lucia MB: Imatinib interferes with survival of multi drug resistant Kaposi's sarcoma cells. *FEBS Lett* 2007, **581**:5897–5903.
39. dos Santos SC, Sa-Correia I: Genome-wide identification of genes required for yeast growth under imatinib stress: vacuolar H⁺-ATPase function is an important target of this anticancer drug. *OMICS* 2009, **13**:185–198.
40. Pardanani A, Vannucchi AM, Passamonti F, Cervantes F, Barbui T, Tefferi A: JAK inhibitor therapy for myelofibrosis: critical assessment of value and limitations. *Leukemia* 2011, **25**:218–225.
41. Grosso S, Puissant A, Dufies M, Colosetti P, Jacquet A, Lebrigand K, Barbry P, Deckert M, Cassuto JP, Mari B, Auberger P: Gene expression profiling of imatinib and PD166326-resistant CML cell lines identifies Fyn as a gene associated with resistance to BCR-ABL inhibitors. *Mol Cancer Ther* 2009, **8**:1924–1933.
42. Park ES, Shaughnessy JD Jr, Gupta S, Wang H, Lee JS, Woo HG, Zhan F, Owens JD Jr, Potter M, Janz S, Mushinski JF: Gene expression profiling reveals different pathways related to Abl and other genes that cooperate with c-Myc in a model of plasma cell neoplasia. *BMC genomics* 2007, **8**:302.
43. Ozturk K, Avcu F, Ugur Ural A: Aberrant expressions of leptin and adiponectin receptor isoforms in chronic myeloid leukemia patients. *Cytokine* 2012, **57**:61–67.
44. Alonci A, Allegra A, Russo S, Penna G, Bellomo G, D'Angelo A, Campo S, Cannavo A, Centorrino R, Musolino C: Imatinib mesylate therapy induces reduction in neutrophil gelatinase-associated lipocalin serum levels and increase in leptin concentrations in chronic myeloid leukemia patients in molecular remission. *Acta Haematol* 2012, **127**:1–6.
45. Eisele YS, Baumann M, Klebl B, Nordhammer C, Jucker M, Kilger E: Gleevec increases levels of the amyloid precursor protein intracellular domain and of the amyloid-beta degrading enzyme neprilysin. *Mol Biol Cell* 2007, **18**:3591–3600.
46. Netzer WJ, Dou F, Cai D, Veach D, Jean S, Li Y, Bormann WG, Clarkson B, Xu H, Greengard P: Gleevec inhibits beta-amyloid production but not Notch cleavage. *Proc Natl Acad Sci U S A* 2003, **100**:12444–12449.
47. Seggewiss R, Lore K, Greiner E, Magnusson MK, Price DA, Douek DC, Dunbar CE, Wiestner A: Imatinib inhibits T-cell receptor-mediated T-cell proliferation and activation in a dose-dependent manner. *Blood* 2005, **105**:2473–2479.
48. Leguay T, Foucaud C, Parrens M, Fitoussi O, Bouabdallah K, Belaud-Rotureau MA, Tabrizi R, Marit G, Pigneux A, Milpied N: EBV-positive lymphoproliferative disease with medullary, splenic and hepatic infiltration after imatinib mesylate therapy for chronic myeloid leukemia. *Leukemia* 2007, **21**:2208–2210.
49. Bekkenk MW, Vermeer MH, Meijer CJ, Jansen PM, Middeldorp JM, Stevens SJ, Willemze R: EBV-positive cutaneous B-cell lymphoproliferative disease after imatinib mesylate. *Blood* 2003, **102**:4243.
50. Morey JS, Ryan JC, Van Dolah FM: Microarray validation: factors influencing correlation between oligonucleotide microarrays and real-time PCR. *Biological Proced Online* 2006, **8**:175–193.

doi:10.1186/1755-8794-5-37

Cite this article as: Kulkarni et al.: Association of differential gene expression with imatinib mesylate and omacetaxine mepesuccinate toxicity in lymphoblastoid cell lines. *BMC Medical Genomics* 2012 **5**:37.

Submit your next manuscript to BioMed Central and take full advantage of:

- Convenient online submission
- Thorough peer review
- No space constraints or color figure charges
- Immediate publication on acceptance
- Inclusion in PubMed, CAS, Scopus and Google Scholar
- Research which is freely available for redistribution

Submit your manuscript at
www.biomedcentral.com/submit

