

EMBOSSSED METAL **DECORATIONS**



WUNDERLICH LTD.

MANUFACTURERS OF BUILDING MATERIALS OF QUALITY

SHOWROOMS _____

SYDNEY • NEWCASTLE • MELBOURNE • ADELAIDE
PERTH • BRISBANE • HOBART • LAUNCESTON



COMMONWEALTH COAT OF ARMS
No. 1506—Steel. Size 30 ins. x. 23 ins.



ROYAL COAT OF ARMS
No. 580—Zinc. Size 54 ins. x. 36 ins.



ROYAL COAT OF ARMS
No. 719—Zinc.
Stock sizes 12 ins. x 8 ins.
Also 18 ins. x 12 ins.



NEW SOUTH WALES COAT OF ARMS
No. 1408—Zinc. Size 53½ ins. x 36 ins.



CROWN
No. 1358—Zinc. Size 6 ins. x 6 ins.



ROYAL COAT OF ARMS
No. 1357—Steel. Size 30½ ins. x 22½ ins.

WUNDERLICH EMBOSSED METAL DECORATIONS ARE AVAILABLE
● UNDECORATED OR BRONZE SPRAYED ●

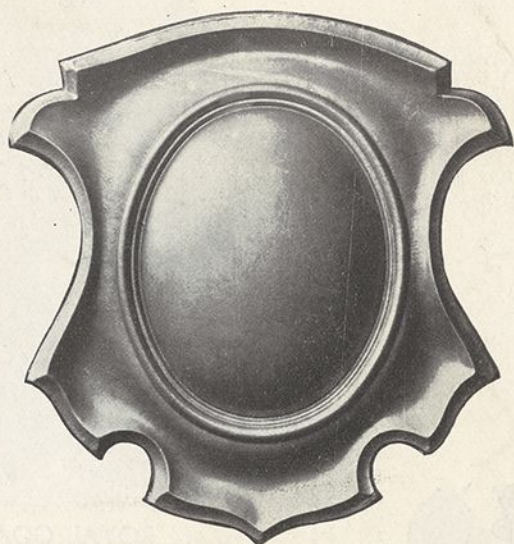
691.0994
Wunder
Met 1003

SPAM



G.R. SHIELD

No. 1356—Steel. Size 20½ ins. x 23¾ ins.



SHIELD

No. 650—Zinc. Size 20 ins. x 21 ins.



NEW SOUTH WALES COAT OF ARMS

No. 1136—Steel. Size 33 ins. x 24 ins.

WUNDERLICH EMBOSSED METAL DECORATIONS
are available
UNDECORATED • BRONZE SPRAYED • DECORATED

33217013615431

PRICE LIST OF Wunderlich Embossed Metal Decorations

SALES TAX EXTRA.

Available Undecorated or Bronze Sprayed, at the following rates:—

(Issued in conjunction with Leaflet M 95, 20/4/37.

		Steel.	Zinc.	Extra for Bronze Spraying.
580—Royal Coat of Arms	54" x 36"	—	£5/15/- ea.	—
650—Shield	20" x 21"	—	7/6 ,,	2/- ea.
719—Royal Coat of Arms	12" x 8"	—	4/3 ,,	-/6 ,,
719—Royal Coat of Arms	18" x 12"	—	5/9 ,,	1/- ,,
1136—N.S.W. Coat of Arms	33" x 24"	Price on Application.		
1356—Shield (G.R.) ..	20½" x 23¾"	6/6 ea.	—	2/- ,,
1357—Royal Coat of Arms	30½" x 22½"	7 6 ,,	9/- ,,	2/6 ,,
1358—Crown	6" x 6"	—	1/6 ,,	-/3 ,,
1408—N.S.W. Coat of Arms	53½" x 36"	—	£5/15/- ,,	—
1506—Commonwealth Coat of Arms	30" x 23"	7/6 ,,	9/- ,,	2/6 ,,

WUNDERLICH LIMITED

Manufacturers of Building Materials of Quality.

SYDNEY, NEWCASTLE, MELBOURNE, ADELAIDE, PERTH, BRISBANE,
HOBART, LAUNCESTON.

M 96.—20/4/37.