



Geelong, a city of beauty and progress

AUTHOR(S)

Unknown

PUBLICATION DATE

01-01-1946

HANDLE

[10536/DRO/DU:30068923](#)

Downloaded from Deakin University's Figshare repository

Deakin University CRICOS Provider Code: 00113B



Geelong

A CITY OF
BEAUTY AND
PROGRESS

SP&V B54 2016 I

919.45 205

Gee.

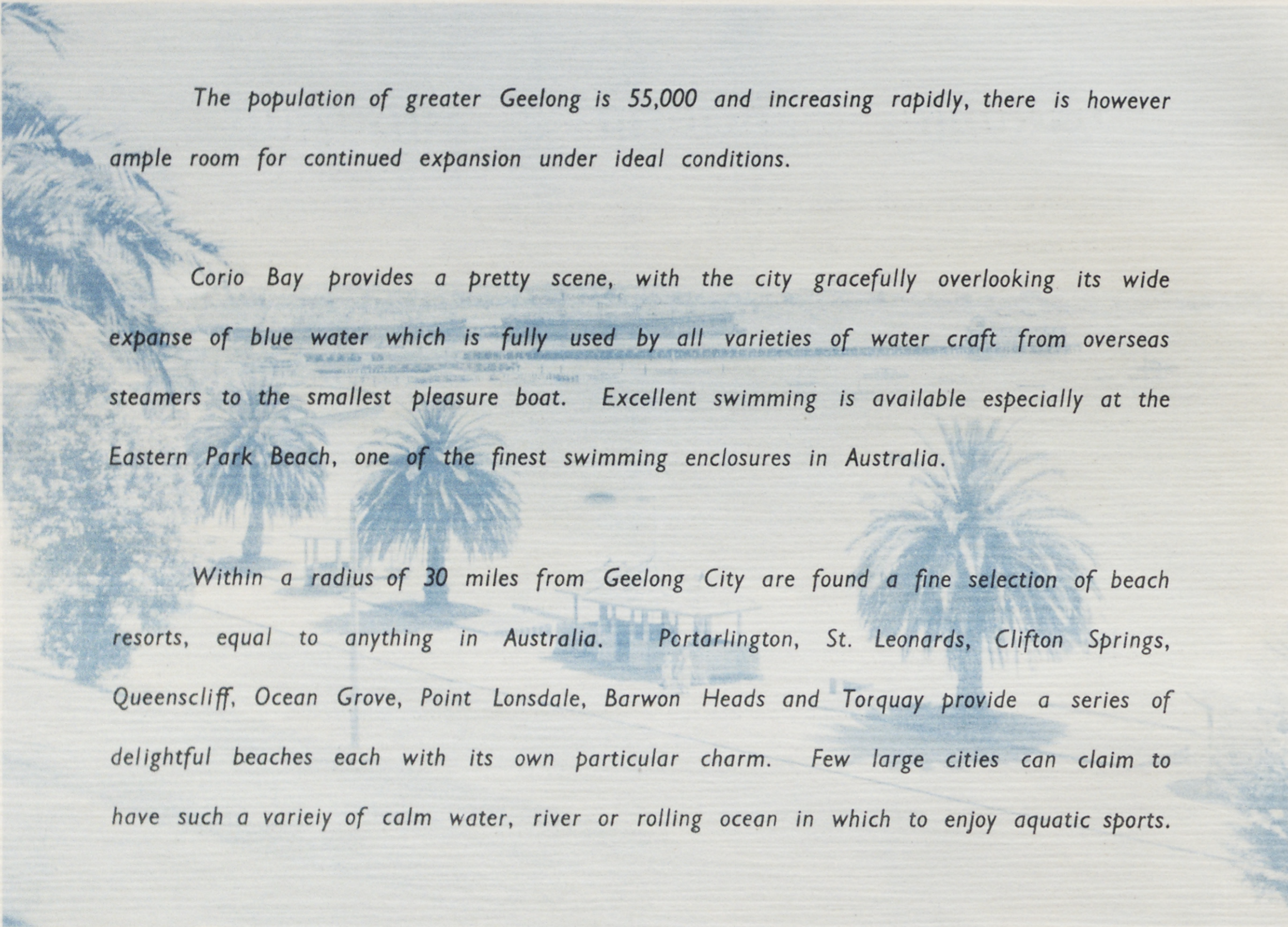
COII 03083154

Geelong - Victoria - Australia

NATURE HAS BESTOWED ON GEELONG ALL THE ADVANTAGES REQUIRED TO
ESTABLISH A PROGRESSIVE CITY IN ATTRACTIVE SURROUNDINGS

Geelong is situated on the shores of Corio Bay, an arm of Port Phillip Bay, and it has as a hinterland the lush rolling grasslands of the Bellarine Peninsula and the Western District of Victoria.

One of the largest provincial cities in Australia, Geelong has a claim to being progressive, with a future of immense possibilities. The fine harbour is to have enlarged facilities to cope with the rapidly increasing demands of its many industries, and also of the rich areas served by the numerous rail and road services. These areas not only provide a wide range of scenic gems but are areas devoted to vital primary and secondary industries.



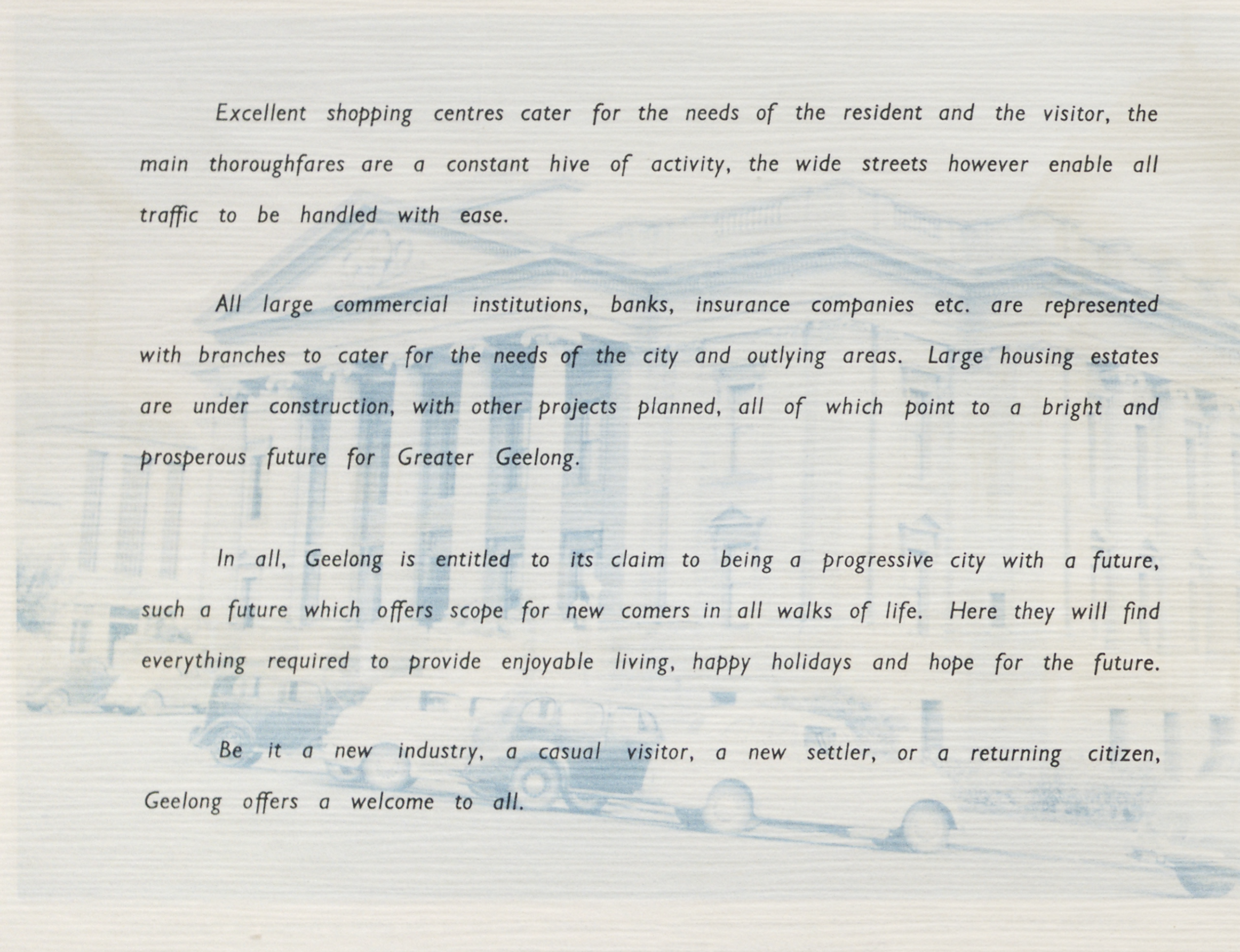
The population of greater Geelong is 55,000 and increasing rapidly, there is however ample room for continued expansion under ideal conditions.

Corio Bay provides a pretty scene, with the city gracefully overlooking its wide expanse of blue water which is fully used by all varieties of water craft from overseas steamers to the smallest pleasure boat. Excellent swimming is available especially at the Eastern Park Beach, one of the finest swimming enclosures in Australia.

Within a radius of 30 miles from Geelong City are found a fine selection of beach resorts, equal to anything in Australia. Portarlington, St. Leonards, Clifton Springs, Queenscliff, Ocean Grove, Point Lonsdale, Barwon Heads and Torquay provide a series of delightful beaches each with its own particular charm. Few large cities can claim to have such a variety of calm water, river or rolling ocean in which to enjoy aquatic sports.



EASTERN BEACH RESERVE. Aerial panorama showing this wonderful addition to the sporting facilities of Geelong City. The swimming Pool is flanked by delightful lawns and shade trees.



Excellent shopping centres cater for the needs of the resident and the visitor, the main thoroughfares are a constant hive of activity, the wide streets however enable all traffic to be handled with ease.

All large commercial institutions, banks, insurance companies etc. are represented with branches to cater for the needs of the city and outlying areas. Large housing estates are under construction, with other projects planned, all of which point to a bright and prosperous future for Greater Geelong.

In all, Geelong is entitled to its claim to being a progressive city with a future, such a future which offers scope for new comers in all walks of life. Here they will find everything required to provide enjoyable living, happy holidays and hope for the future.

Be it a new industry, a casual visitor, a new settler, or a returning citizen, Geelong offers a welcome to all.



MOORABOOL STREET. Looking along a section of this busy thoroughfare with its excellent shopping facilities.



EASTERN BEACH POOL. A section of this popular swimming pool. Every facility is provided for swimmers of all ages to enjoy themselves. There is also a special Olympic Pool included in the enclosure.



ART GALLERY AND PARK. This is typical of many delightful corners in Geelong's gardens and parks.

Modern educational facilities are ample, a number of schools being widely known throughout Australia and overseas. Amongst these being the Gordon Institute of Technology, Geelong College and Geelong Grammar School.

Within the city area are numerous lovely public gardens and parks, whilst adjoining the outer areas are excellent playing fields, golf courses, etc. Victoria's oldest Golf Club "Bell Park" is situated in the North West section.

To stand on the heights overlooking Queens Park, with the winding Barwon River backed by the rolling hills, is to witness a scene of restful charm and tranquility, seldom found so close to a busy city.

The Barwon River flowing through the outskirts of the city provides an excellent rowing course, and serves numerous large woollen mills and associated industries.

Geelong is an important cog in the industrial and primary life of the Australian Nation. Its position being reflected in the number of important industries located in and adjacent to the City. Amongst these are Ford Motor Works, International Harvester Company, Australian Cement Ltd., with many others covering a vast range of essential products.



QUEENS PARK. This is a typical scene within a few minutes of the heart of the City. The Barwon River winds picturesquely past the Queens Park Golf Links.



FORD MOTOR WORKS. Aerial View over the Ford Motor Works, one of many large industries which are a feature of the commercial life of Geelong.



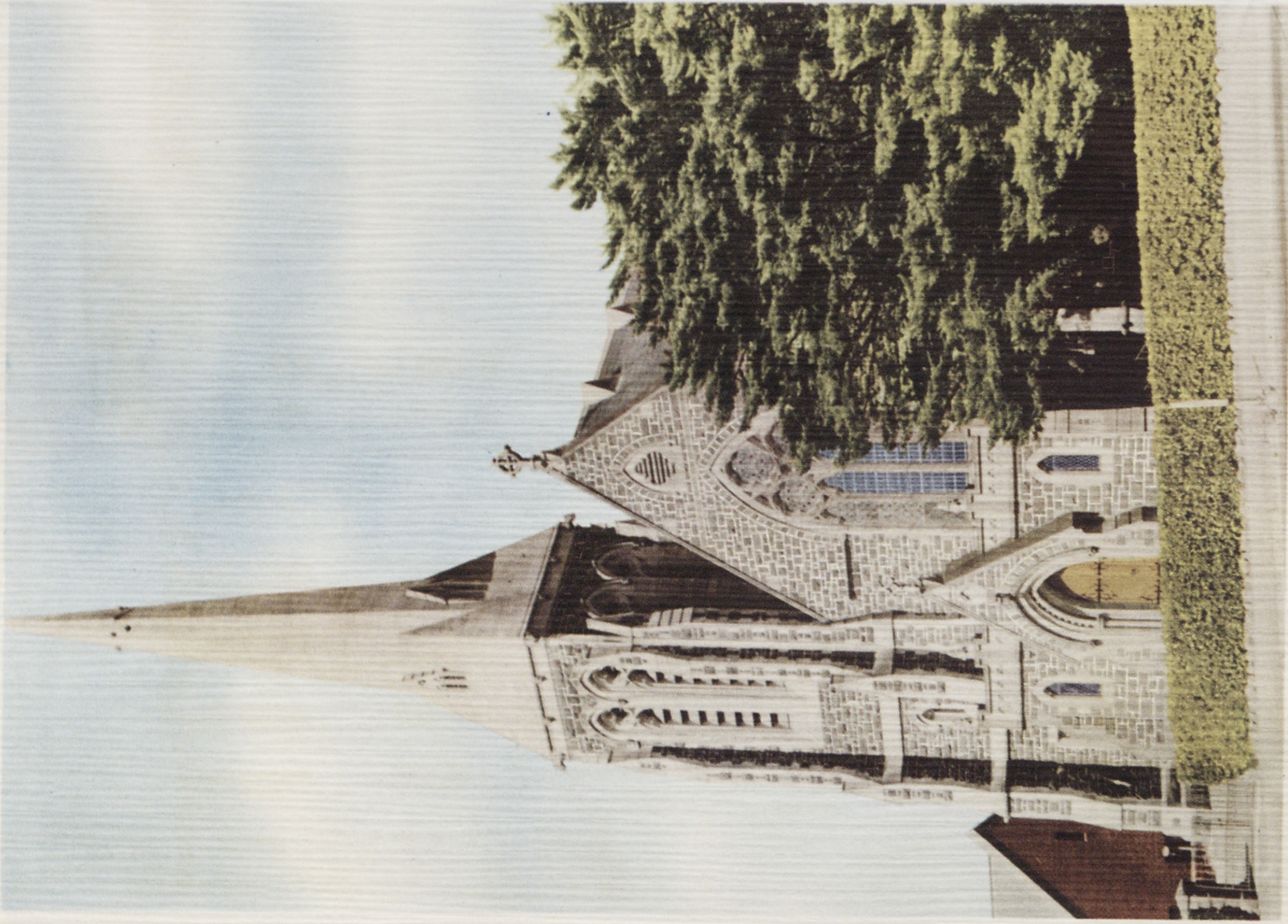
CEMENT WORKS. At Fyansford near Geelong are situated the large works of the Australian Cement Limited.



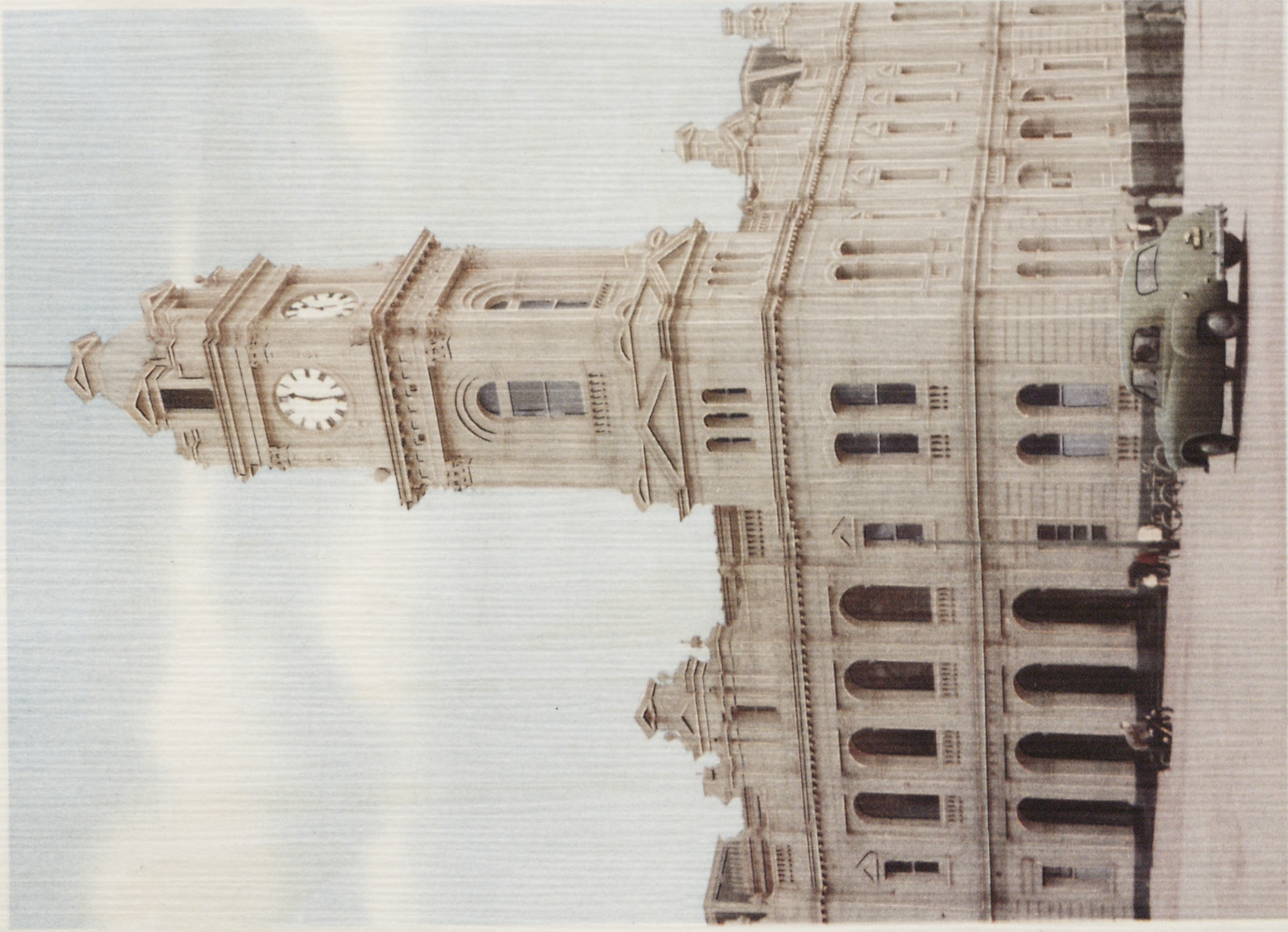
TORQUAY. View of Torquay Beach, another popular playground for Geelong residents. The lovely wide sands are laved by the sweeping rollers of the Southern Ocean. This is an excellent surfing beach.



GEELONG HARBOUR. A corner of Geelong's Harbour front, which is used extensively by overseas steamers. Pleasure craft make full use of its wide protected waters.



ST. GEORGE'S PRESBYTERIAN CHURCH. This is typical of many very fine Churches situated in Geelong and its suburbs. These attractive edifices stand as memorials to the early settlers who founded the city on solid foundations.



GEELONG POST OFFICE. This fine building is an example of many such Public and Commercial Buildings found in the heart of the city.



ART GALLERY. Adjoining the heart of the city the Art Gallery and other Public Buildings are surrounded by attractive well kept parks and gardens.



Top. Infectious Diseases Hospital.
Below. Ryrie Street.

Top. Intermediate Hospital.
Below. St. Mary's Roman Catholic Cathedral.



BARWON RIVER. As it wends its way to the sea, the Barwon River serves numerous Woollen Mills and factories. Its picturesque waters also provide an excellent rowing course.



PUBLIC BUILDINGS. Gheringhap Street, showing the City Hall, Public Offices, Telephone Exchange, and Post Office.

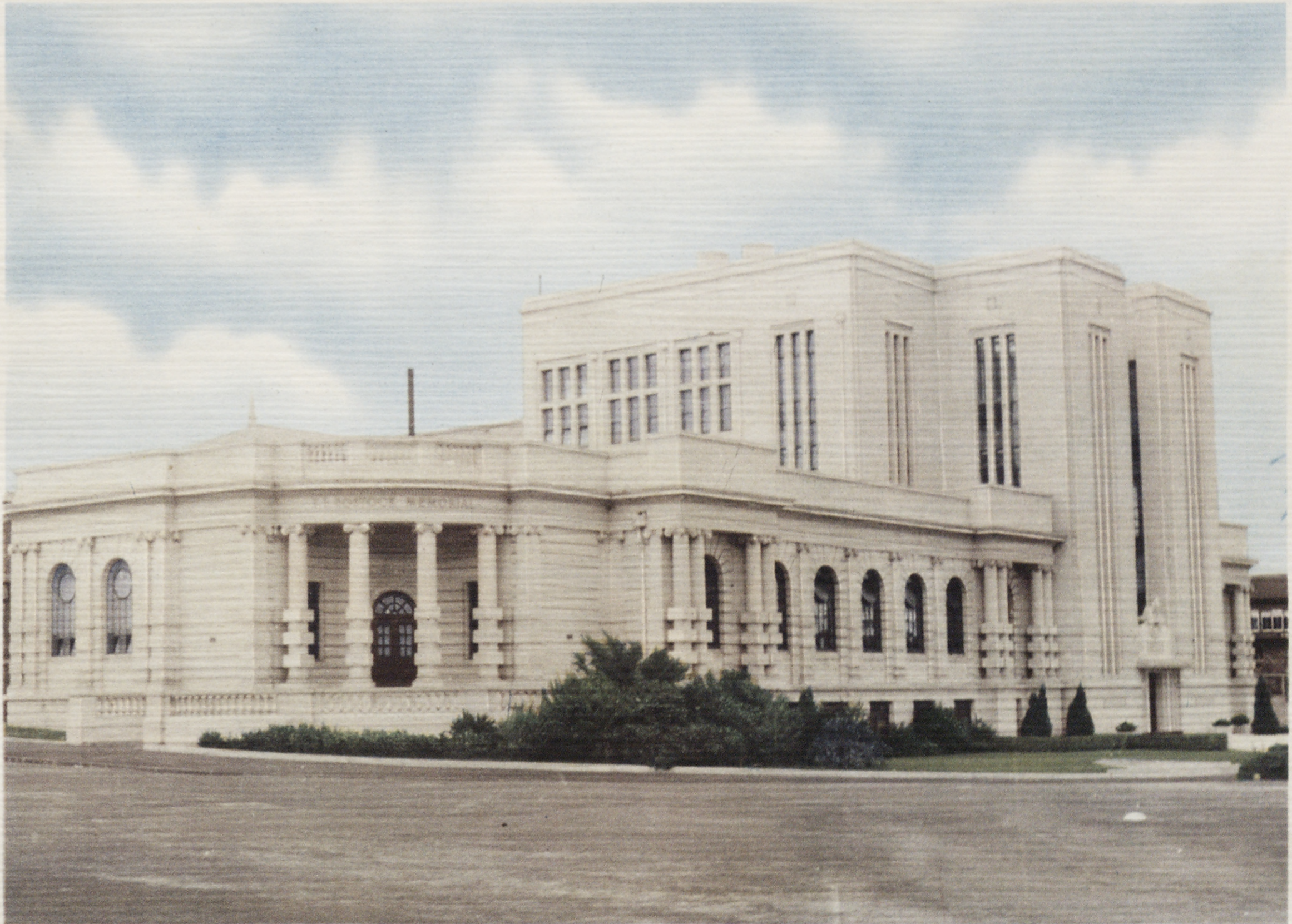
The rich rolling plains and undulating country surrounding Geelong is in itself very picturesque, with its fields of cereal crops, lush pastures, comfortable homesteads, all very colorful at every season. Then the famous seaside holiday resort of Lorne lies 45 miles distant, over the Great Ocean Road, a fine coastal highway of endless beauty.

Here along the coast is found a medley of nature, timber covered mountains rise abruptly from the blue southern ocean, long sweeps of glistening sands laved by the ocean rollers, quiet streams meandering through the valleys, typical Australian bushlands, all combining to provide for Geelong a lovely holiday area of country in which to relax at week ends and when on holidays.

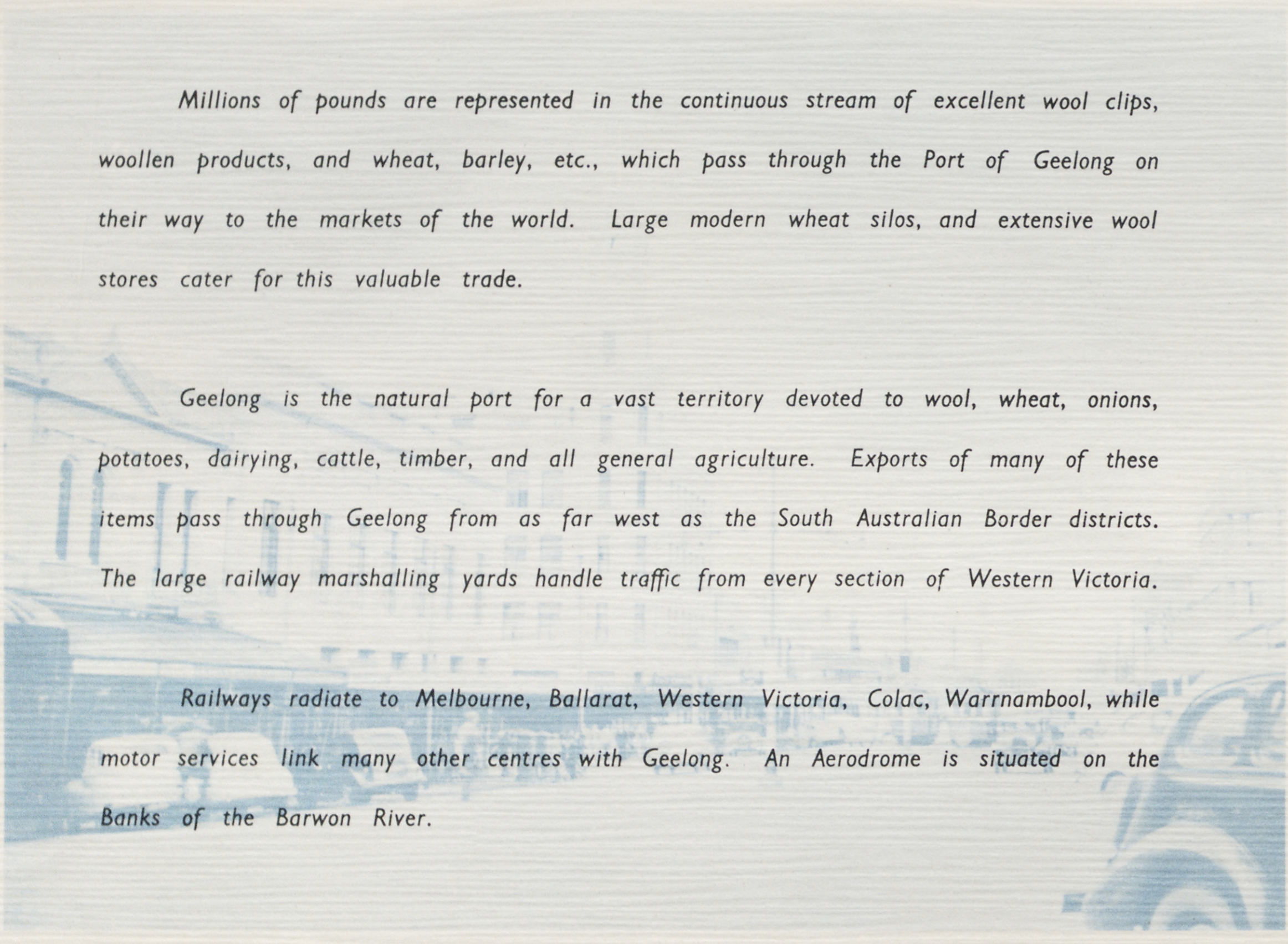
Geelong's climate is mild and pleasant throughout the year. Another feature of Geelong are the wide streets, many tree lined, with fine public buildings, churches, schools, hospitals and private homes which reflect the general prosperity and civic pride of the inhabitants.



LORNE. This lovely holiday resort is only 45 miles from Geelong along the famous Great Ocean Road.



TEXTILE COLLEGE. This unique College, a branch of the Gordon Institute of Technology, trains Students in all branches of the Textile Industry.



Millions of pounds are represented in the continuous stream of excellent wool clips, woollen products, and wheat, barley, etc., which pass through the Port of Geelong on their way to the markets of the world. Large modern wheat silos, and extensive wool stores cater for this valuable trade.

Geelong is the natural port for a vast territory devoted to wool, wheat, onions, potatoes, dairying, cattle, timber, and all general agriculture. Exports of many of these items pass through Geelong from as far west as the South Australian Border districts. The large railway marshalling yards handle traffic from every section of Western Victoria.

Railways radiate to Melbourne, Ballarat, Western Victoria, Colac, Warrnambool, while motor services link many other centres with Geelong. An Aerodrome is situated on the Banks of the Barwon River.

PUBLISHED BY
NUCOLORVUE PRODUCTIONS
MENTONE, VICTORIA