



You can stop fruit fly : protect Victoria's fruit

AUTHOR(S)

Victoria Dept. of Agriculture

PUBLICATION DATE

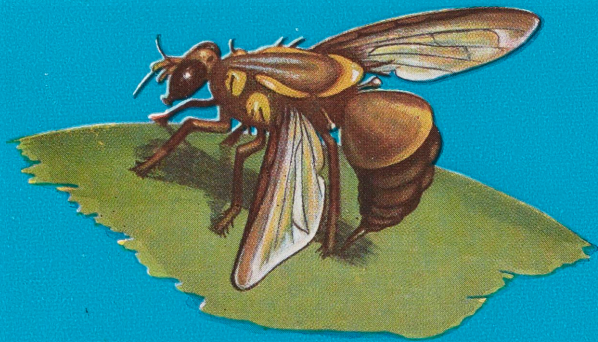
01-01-1964

HANDLE

[10536/DRO/DU:30111525](#)

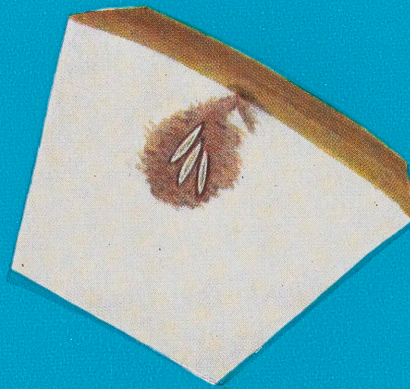
Downloaded from Deakin University's Figshare repository

Deakin University CRICOS Provider Code: 00113B



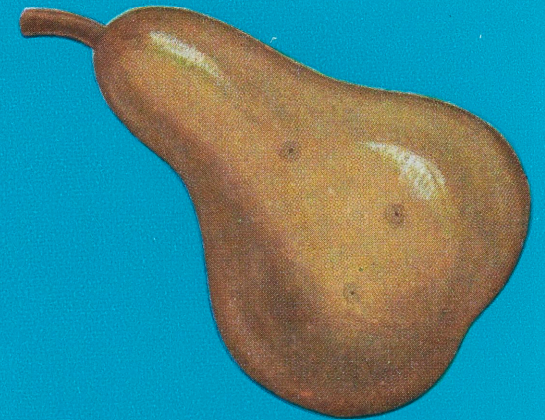
EGG LAYING FLY

Mature adult female flies lay eggs by piercing the skin of fruit with a "sting" or ovipositor. A fly can lay up to 300 eggs over a period of 6-8 months.



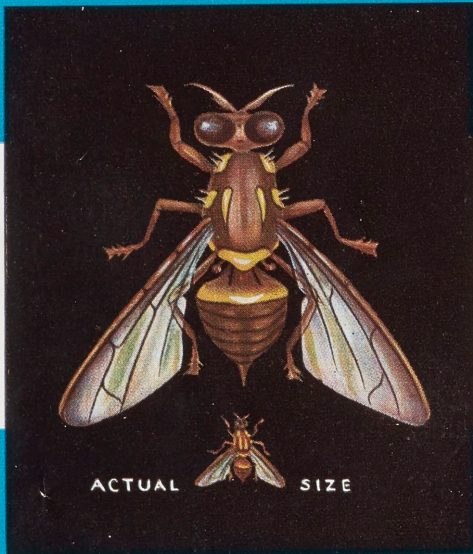
EGGS

The eggs are laid beneath the skin in batches of 6 or 8 eggs. They hatch out after 3-4 days.



STINGS

The only external signs of a fly struck fruit are small areas with a water soaked appearance.



THIS IS FRUIT FLY

IT CAN ATTACK ALL EDIBLE FRUIT

If you find any fruit containing maggots, send specimens to the Department of Agriculture, Treasury Gardens, Melbourne, C.2



MAGGOTS

Maggots are smooth creamy coloured about $\frac{1}{8}$ inch long. When placed on a smooth surface they curl up and jump.



INFESTED FRUIT

Fruit fly maggots tunnel through the flesh of the fruit reducing it to a brown filthy pulp.



PUPAE

After two to six weeks the maggots drop to the ground, crawl into the soil and transform to the pupal stage. After 11-14 days in the summer or 3-4 months in the winter, the adult fly emerges and so the cycle commences again.

Why Fight Fruit Fly?

Fruit fly is one of the world's worst fruit pests.

It could attack all the kinds of fruit grown in Victoria.

It threatens the commercial fruit industry of Victoria, worth £12,000,000 per annum to the State.

The continued prosperity of this industry depends on good market demand and effective control of pests and diseases, of which it has already more than enough.

IF FRUIT FLY BECAME AN ESTABLISHED PEST IN VICTORIA.

- Quarantine restrictions imposed by interstate and overseas governments will reduce markets or increase marketing costs.
- Extra spraying would add enormously to production costs now and in the years ahead.
- The suburban home gardener would get very few maggot free fruits from his own trees.

Determined action is being taken by the Department of Agriculture to :

- Prevent the entry of fly infested fruit.
- Eradicate spot infestations which occur.

This campaign can only be successful if every citizen will help.

Carefully read this leaflet to find out how YOU can help.

Fruit Fly in Victoria

Whenever fruit fly is discovered in Victoria the area around the outbreak is proclaimed under the Vegetation Diseases (Fruit Fly) Act.

When an area is proclaimed—

- You cannot take any fruit out of the area without a permit issued by an authorized Inspector of the Victorian Department of Agriculture. You cannot move fruit from place to place within the area without a permit.
- The Victorian Department of Agriculture can order the spraying of trees and the stripping of all fruit. The stripping and spraying of the area immediately surrounding the site where the fly was discovered will be carried out by the Department of Agriculture. The planting of certain fruit-bearing annual plants can be prohibited.
- THIS ACTION IS TAKEN TO ERADICATE THE FLY AND PROTECT SURROUNDING DISTRICTS.

It is in your own and your districts interests to CO-OPERATE WITH THE VICTORIAN DEPARTMENT OF AGRICULTURE.

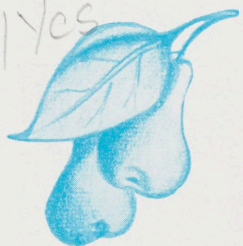
A. C. Brooks, Govt. Print., Melb.

YOU *can* STOP FRUIT FLY



DEPARTMENT OF AGRICULTURE, VICTORIA

SPPAM
634.049774
VIC/YES



Watch for it

The success of the campaign to keep Victoria free from fruit fly depends on swift action when any infested fruit is discovered.

Study the life history of the fruit fly so that you can recognize each of the stages.



What to look for

The most likely sign of fruit fly attack would be the discovery of active maggots in otherwise sound fruit. The fly usually strikes fruit which is ripe or almost ripe. Windfalls should be given special attention.

You are unlikely to see the adult fly. It frequents shady parts of trees and shrubs.



If you suspect you have discovered fruit fly

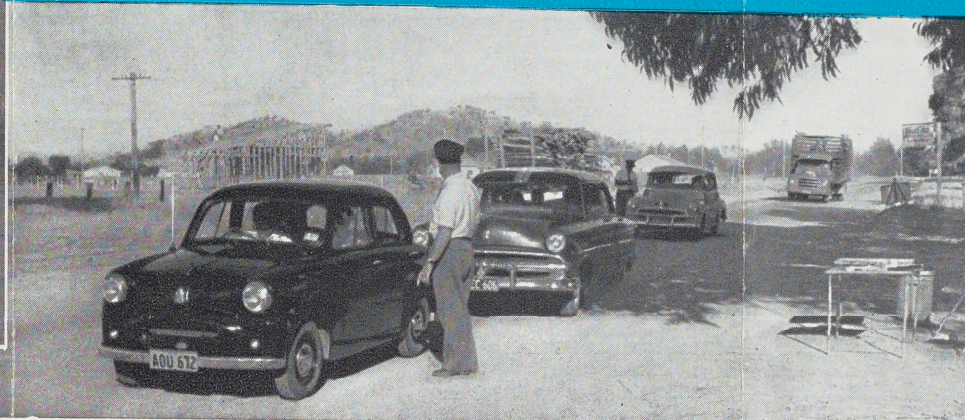
Place specimens in a sealed tin, put your name and address on it, and leave with the nearest officer of the Department of Agriculture or forward direct to the Superintendent of Horticulture, Department of Agriculture, Melbourne, C.2.



33217012798063



Fruit Carried by Passengers
is Examined Carefully.



Highway Patrols Check Fruit
Carried by Travellers.

Prevent the spread of fruit fly

Don't be a Carrier

Fruit fly will only spread very slowly by flying.

It is most likely to be spread when fruit containing maggots is carried into a clean area from a district where the fly already occurs, mainly in private parcels of fruit—

- Posted by a kind hearted but unwitting person in a northern State.
- Carried by a traveller coming into Victoria by car, train, plane or ship.

You can reduce this danger

- ASK YOUR FRIENDS NOT TO SEND OR BRING FRUIT TO YOU FROM NORTHERN STATES.
- DO NOT BRING FRUIT WITH YOU WHEN TRAVELLING INTERSTATE.
- NEVER TAKE FRUIT OUT OF A PROCLAIMED FRUIT FLY AREA.
- IF YOU MUST CARRY FRUIT MAKE SURE IT IS EXAMINED BY AN OFFICER OF THE DEPARTMENT OF AGRICULTURE.

Inspectors are stationed at the main border road crossings and they meet interstate trains, planes, and ships.

All commercial lines of fruit coming into Victoria are subjected to examination. Each case of fruit is tipped out and every fruit is carefully inspected.



Interstate Fruit Consignments
are Thoroughly Inspected.