



---

## The Royal Visit : 1954

AUTHOR(S)

Australia

PUBLICATION DATE

01-01-1954

HANDLE

[10536/DRO/DU:30111578](#)

Downloaded from Deakin University's Figshare repository

Deakin University CRICOS Provider Code: 00113B



# THE ROYAL VISIT

SPPAM

994

Aus/Rvi

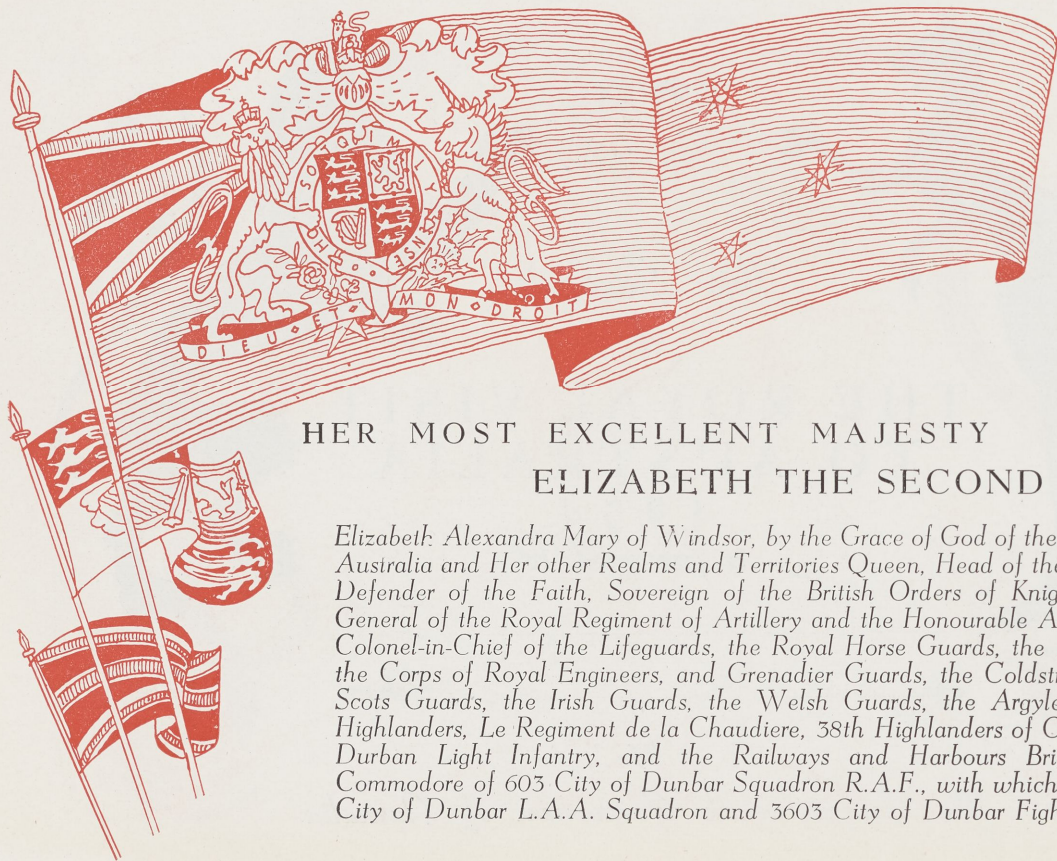
1954

33217013473237







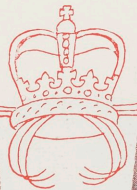


## HER MOST EXCELLENT MAJESTY ELIZABETH THE SECOND

*Elizabeth: Alexandra Mary of Windsor, by the Grace of God of the United Kingdom, Australia and Her other Realms and Territories Queen, Head of the Commonwealth, Defender of the Faith, Sovereign of the British Orders of Knighthood. Captain General of the Royal Regiment of Artillery and the Honourable Artillery Company. Colonel-in-Chief of the Lifeguards, the Royal Horse Guards, the 16th 5th Lancers, the Corps of Royal Engineers, and Grenadier Guards, the Coldstream Guards, the Scots Guards, the Irish Guards, the Welsh Guards, the Argyle and Sutherland Highlanders, Le Regiment de la Chaudiere, 38th Highlanders of Canada, the Royal Durban Light Infantry, and the Railways and Harbours Brigade. Hon. Air Commodore of 603 City of Dunbar Squadron R.A.F., with which is affiliated 2603 City of Dunbar L.A.A. Squadron and 3603 City of Dunbar Fighter Control Unit.*







Our Royal Visitors, Her Majesty Queen Elizabeth II, and  
her husband, His Royal Highness, the Duke of Edinburgh.

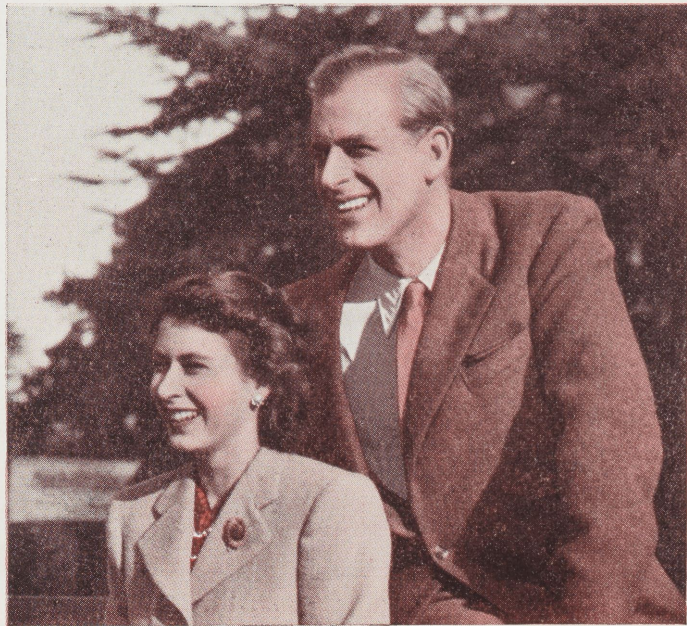
At the right they are seen with their children, Prince Charles and Princess Anne, on the balcony of Buckingham Palace after their return from the Coronation ceremony . . . On the opposite page is a Royal group. The Queen and the Duke were photographed with their family relatives at Buckingham Palace after the Coronation.





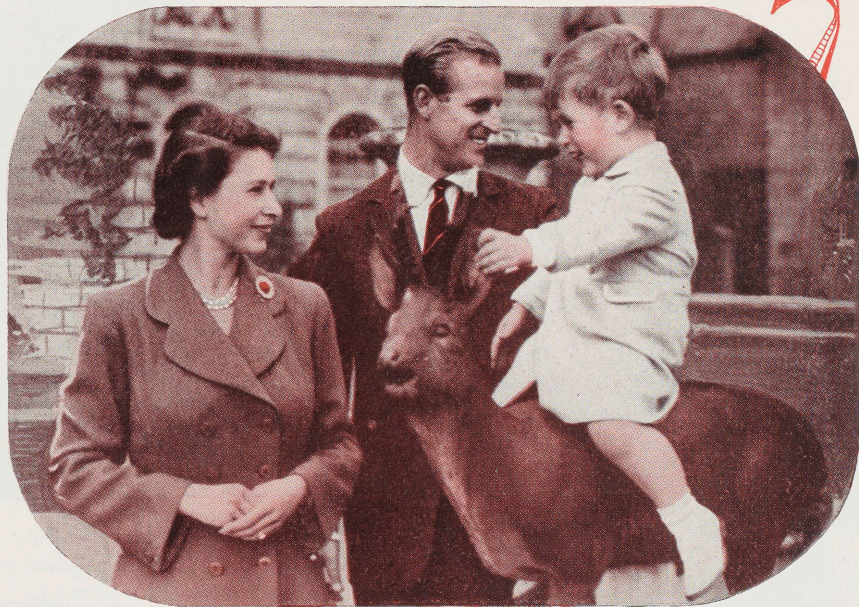


# THE QUEEN AND HER



# FAMILY

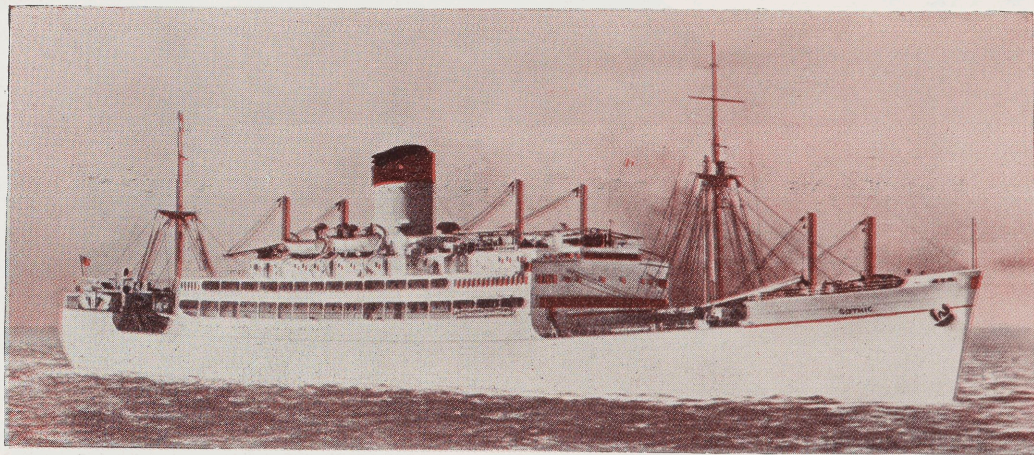
Her Majesty the Queen is Colonel-in-Chief of the Life Guards. She is shown taking the salute at Buckingham Palace at a Trooping of the Colour.



Her Majesty the Queen and the Duke of Edinburgh live a happy family life in their home at Windsor Castle.

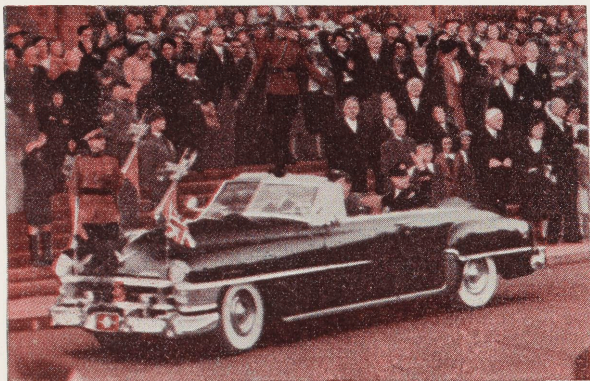


# ROYAL TRANSPORT IN AUSTRALIA

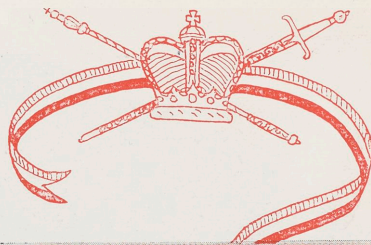
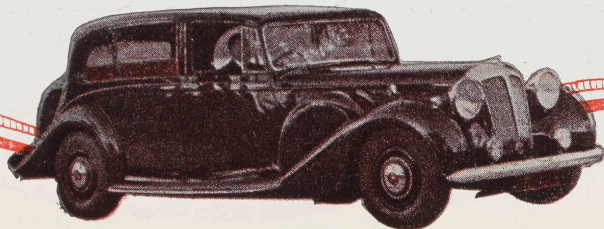


Her Majesty and the Duke of Edinburgh will sail first to New Zealand and from there to Sydney. "Gothic" will also take them to Tasmania, to the Barrier Reef, and finally from Fremantle back to the United Kingdom.

S.S. "Gothic" has been commissioned to bring the Royal Visitors to Australia. The ship was specially fitted out for the postponed Royal Visit of 1952. "Gothic" is one of the finest of the Shaw Savill line.



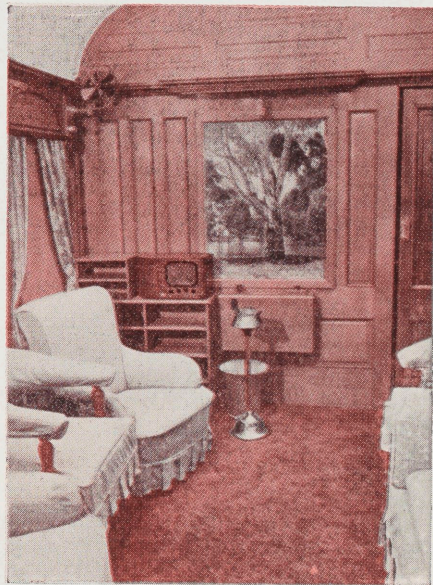
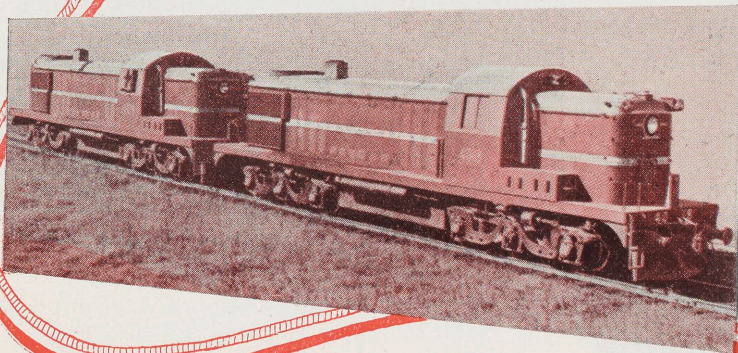
The Royal Cars will be used when the Queen and the Duke drive through the streets of the cities and towns they visit. On this page are three types of cars that will be used.





## ROYAL TRANSPORT

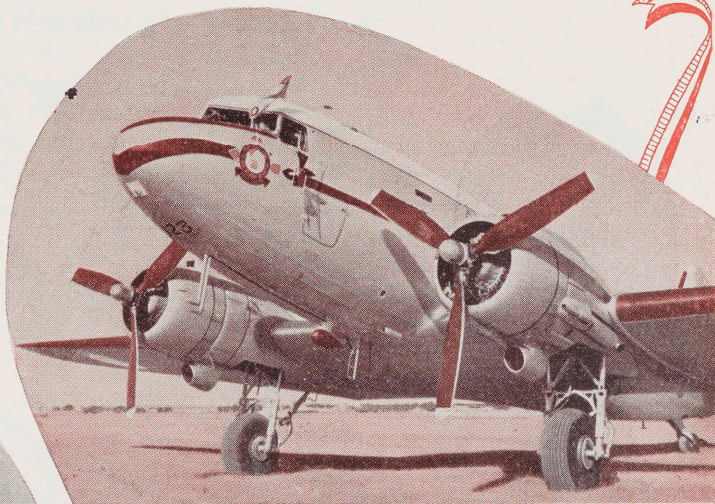
The New South Wales and Victorian Railways have prepared special Royal Trains. The engines of the New South Wales train are shown. Through the wide windows of the parlour car the Queen and the Duke will have a fine view of the country.





IN

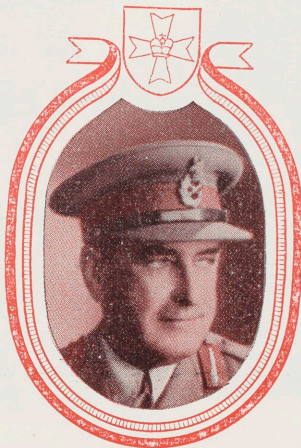
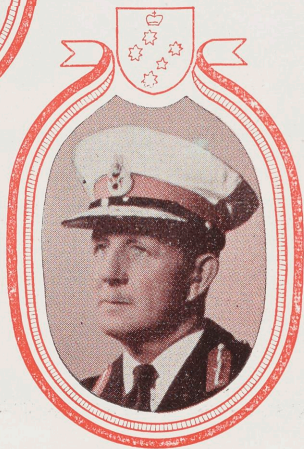
AUSTRALIA



This is the specially fitted out Royal Dakota. It is sound-proof inside, and, as well as the comfortable travelling compartment, it has a special conference room for Her Majesty.

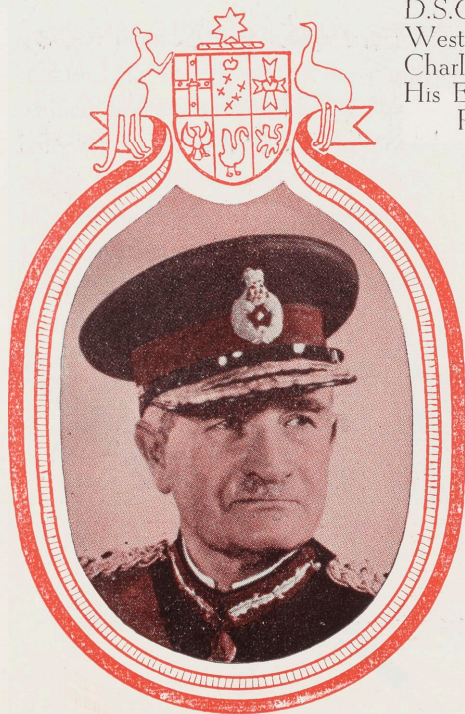
## THE QUEEN'S REPRESENTATIVES

The Governor-General and the Governors are the Queen's representatives in this country. On this page from left to right are:—His Excellency the Governor of New South Wales, Lt.-General Sir John Northcott, K.C.M.G., C.B., M.V.O.; His Excellency the Governor of Victoria, General Sir Dallas Brooks, K.C.B., K.C.M.G., D.S.O.; His Excellency the Governor of Queensland, Lt.-General Sir John Lavarack, K.B.E., C.B., C.M.G., D.S.O.; and His Excellency the Governor of South Australia, Air Vice-Marshal Sir Robert George, K.B.E., M.C.





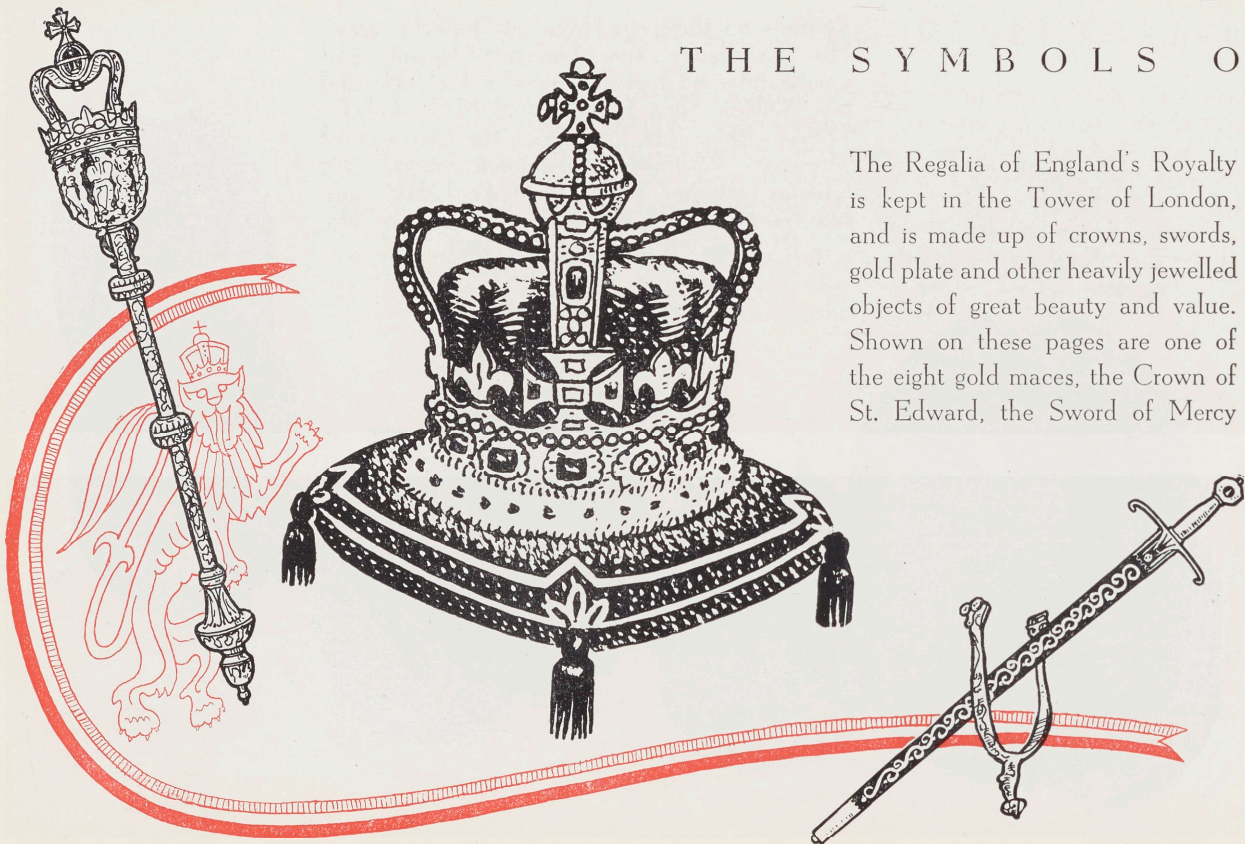
Portraits on this page, from left to right, are:—  
His Excellency the Governor-General and  
Commander-in-Chief of Australia, Field-Marshal  
Sir William Slim, G.C.B., G.C.M.G., G.B.E.,  
D.S.O., M.C.; His Excellency the Governor of  
Western Australia, Lieutenant-General Sir  
Charles Gairdner, K.C.M.G., C.B., C.B.E.; and  
His Excellency the Governor of Tasmania, The  
Rt. Hon. Sir Ronald Cross, Bart., P.C.





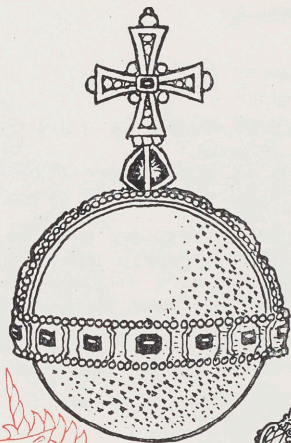
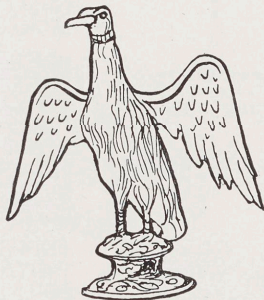
## THE SYMBOLS OF

The Regalia of England's Royalty is kept in the Tower of London, and is made up of crowns, swords, gold plate and other heavily jewelled objects of great beauty and value. Shown on these pages are one of the eight gold maces, the Crown of St. Edward, the Sword of Mercy



# R O Y A L T Y

with one of the two golden spurs of St. George, the Coronation Ring, the Anointing Spoon and the golden Ampulla. Just to the right is the Orb of England, surmounted by a cross signifying the sovereignty of Christianity. Last illustration on this page is the Royal Sceptre.





## A U S T R A L I A N I T I N E R A R Y — 1 9 5 4

SYDNEY—Wednesday, 3rd February, to Thursday, 18th February.

NEWCASTLE—Tuesday, 9th February.

LISMORE—Tuesday, 9th February, to Wednesday, 10th February.

CASINO—Wednesday, 10th February.

DUBBO—Wednesday, 10th February.

WOLLONGONG—Thursday, 11th February.

BATHURST—Friday, 12th February.

LITHGOW—Friday, 12th February.

KATOOMBA—Friday, 12th February.

WAGGA—Saturday, 13th February.

CANBERRA—Saturday, 13th February, to Thursday, 18th February.

HOBART—Saturday, 20th Feb., to Tuesday, 23rd Feb.

WYNYARD—Tuesday, 23rd February.

BURNIE—Tuesday, 23rd February.

ULVERSTONE—Tuesday, 23rd February.

DEVONPORT—Tuesday, 23rd February.

CRESSY—Tuesday, 23rd February, to Wednesday, 24th February.

LAUNCESTON—Wednesday, 24th February.

MELBOURNE—Wednesday, 24th February, to Tuesday, 9th March.

MT. GAMBIER—Friday, 26th February.

HAMILTON—Friday, 26th February.

FLINDERS—Tuesday, 2nd March.

SALE—Wednesday, 3rd March.

TRARALGON—Wednesday, 3rd March.

YALLOURN—Wednesday, 3rd March.

WARRAGUL—Wednesday, 3rd March.

BENALLA—Friday, 5th March.

SHEPPARTON—Friday, 5th March.

ECHUCA—Friday, 5th March.

ROCHESTER—Friday, 5th March.

BENDIGO—Friday, 5th March.

CASTLEMAINE—Friday, 5th March.

MARYBOROUGH—Friday, 5th March.

BALLARAT—Saturday, 6th March.

GEELONG—Saturday, 6th March.

WARBURTON—Saturday, 6th March.

BRISBANE—Tuesday, 9th March, to Thursday, 18th March.

BUNDABERG—Thursday, 11th March.

TOOWOOMBA—Thursday, 11th March.

CAIRNS—Friday, 12th March.

TOWNSVILLE—Saturday, 13th March.

MACKAY—Monday, 15th March.

ROCKHAMPTON—Monday, 15th March.

BROKEN HILL—Thursday, 18th March.

ADELAIDE—Thursday, 18th March, to Friday, 26th March.

WHYALLA—Saturday, 20th March.

PORT LINCOLN—Saturday, 20th March.

WOOMERA—Monday, 22nd March.

RENMARK—Thursday, 25th March.

MILDURA—Thursday, 25th March.

KALGOORLIE—Friday, 26th March.

PERTH—Friday, 26th March.

BUSSELTON—Tuesday, 30th March.

ALBANY—Tuesday, 30th March.

NORTHAM—Wednesday, 31st March.

YORK—Wednesday, 31st March.

FREMANTLE—Thursday, 1st April.

## LEGEND

- 1 Sydney
- 2 Newcastle
- 3 Casino
- 4 Lismore
- 5 Dubbo
- 6 Wollongong
- 7 Bathurst
- 8 Lithgow
- 9 Katoomba
- 10 Wagga Wagga
- 11 Canberra
- 12 Hobart
- 13 Wynyard
- 14 Burnie
- 15 Ulverstone
- 16 Devonport
- 17 Cressy
- 18 Launceston
- 19 Melbourne
- 20 Mt. Gambier
- 21 Hamilton
- 22 Flinders
- 23 Sale
- 24 Traralgon
- 25 Yallourn
- 26 Warragul
- 27 Benalla
- 28 Shepparton
- 29 Tatura



## LEGEND

- 30 Echuca
- 31 Rochester
- 32 Bendigo
- 33 Castlemaine
- 34 Maryborough
- 35 Ballarat
- 36 Geelong
- 37 Warburton
- 38 Brisbane
- 39 Bundaberg
- 40 Toowoomba
- 41 Cairns
- 42 Townsville
- 43 Mackay
- 44 Rockhampton
- 45 Broken Hill
- 46 Adelaide
- 47 Whyalla
- 48 Pt. Lincoln
- 49 Woomera
- 50 Renmark
- 51 Mildura
- 52 Kalgoorlie
- 53 Perth
- 54 Busselton
- 55 Albany
- 56 Northam
- 57 York
- 58 Fremantle



