



Wunderlich fireplace surrounds of glazed terra-cotta

AUTHOR(S)

Wunderlich Limited

PUBLICATION DATE

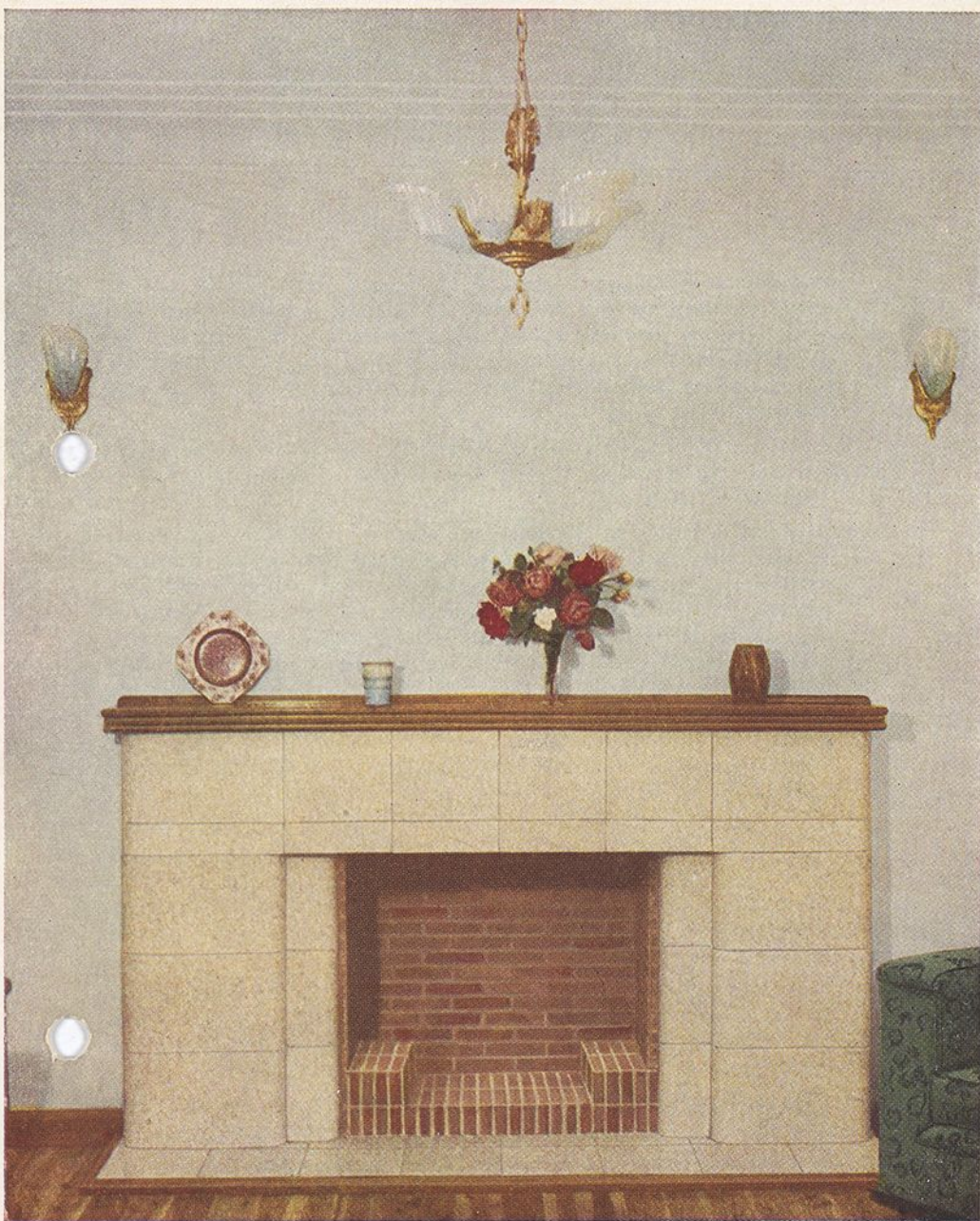
01-01-1953

HANDLE

[10536/DRO/DU:30122172](#)

Downloaded from Deakin University's Figshare repository

Deakin University CRICOS Provider Code: 00113B



ILLUSTRATING IN NATURAL COLOUR DESIGN No. 8

HEIGHT 3' 7 $\frac{1}{2}$ ", WIDTH 6' 7 $\frac{1}{2}$ "

F. Wunderlich
FIREPLACE SURROUNDS
OF GLAZED TERRA-COTTA

Beautiful Firesides

for THE MODERN HOME

Wunderlich Fireplace Surrounds of Glazed Terra Cotta are in complete harmony with the colour and design requirements of the modern home; they add beauty and distinction to the fireside. The delightful smooth-surfaced glaze finish of the blocks comprising the surrounds is a buff mottled white that is easy to keep clean and immaculate.

A variety of designs is available for open fireplaces as well as for surrounds to gas and electric fires, "Kosi," "Wonderheat" and "Warmray" stoves.

Wunderlich Fireplace Surrounds are readily installed in new homes. As well, they lend themselves admirably to remodelling schemes, particularly where it is desired to replace an old-fashioned fireplace and instal a modern space-heating fire or stove. Normally they are supplied to finish flush against the wall, but where chimney breasts project a half brick from the wall face, infilling or return blocks are available for finishing at each side of the surround, as typically illustrated by Design No. 7A. These infilling or return blocks are supplied on request with any surround at extra cost. When ordering, specify SURROUND ONLY or SURROUND WITH INFILLING BLOCKS.

Wunderlich Hearth Tiles, 10" x 10" x 1" thick, glazed buff mottled white to match the surround blocks, form an effective and easy to clean outer hearth for all fireplaces; Designs No. 7A, 8, 9 and 17 illustrate their appearance when used for this purpose. Order these when ordering the surround. Hearth Tiles are extra to the cost of the surrounds.

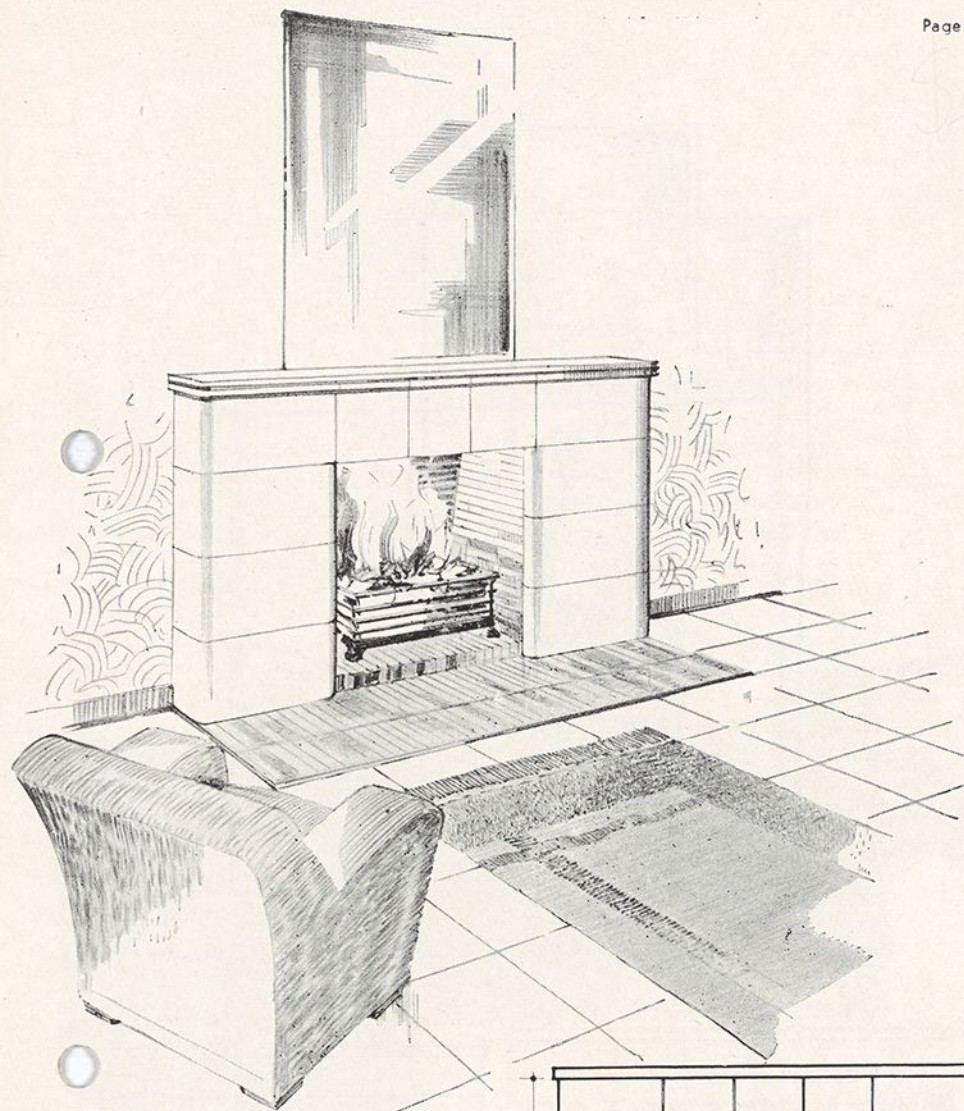
In the case of open fireplaces, it is normal to line the back, cheeks and inner hearth with small wire-cut brickettes $6\frac{1}{2}$ " x $1\frac{1}{4}$ " x 3". Use the brickettes on edge to form the hearth, as shown by the illustrations.

NOTE: The timber mantel shelf is not included with the surround.

FIXING: Refer to pages 9, 10, 11 and 12 for instructions how to fix surrounds to brick, concrete or timber backgrounds.

A PRODUCT OF THE CERAMIC DIVISION OF
WUNDERLICH LIMITED
MANUFACTURERS OF BUILDING MATERIALS

SYDNEY • MELBOURNE • ADELAIDE • NEWCASTLE
BRISBANE • HOBART • LAUNCESTON
PERTH ASSOCIATES: H. L. BRISBANE AND WUNDERLICH LIMITED



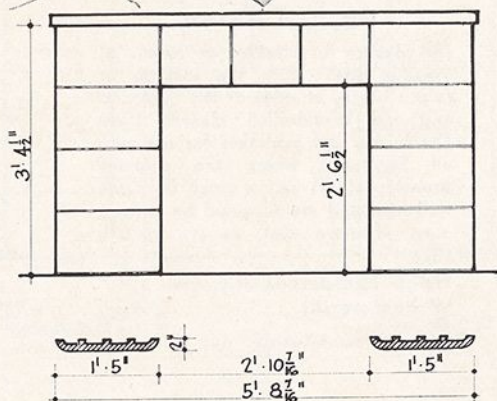
DESIGN No. 6

Of medium size, this Fireplace Surround is suitable for installation in rooms of average size.

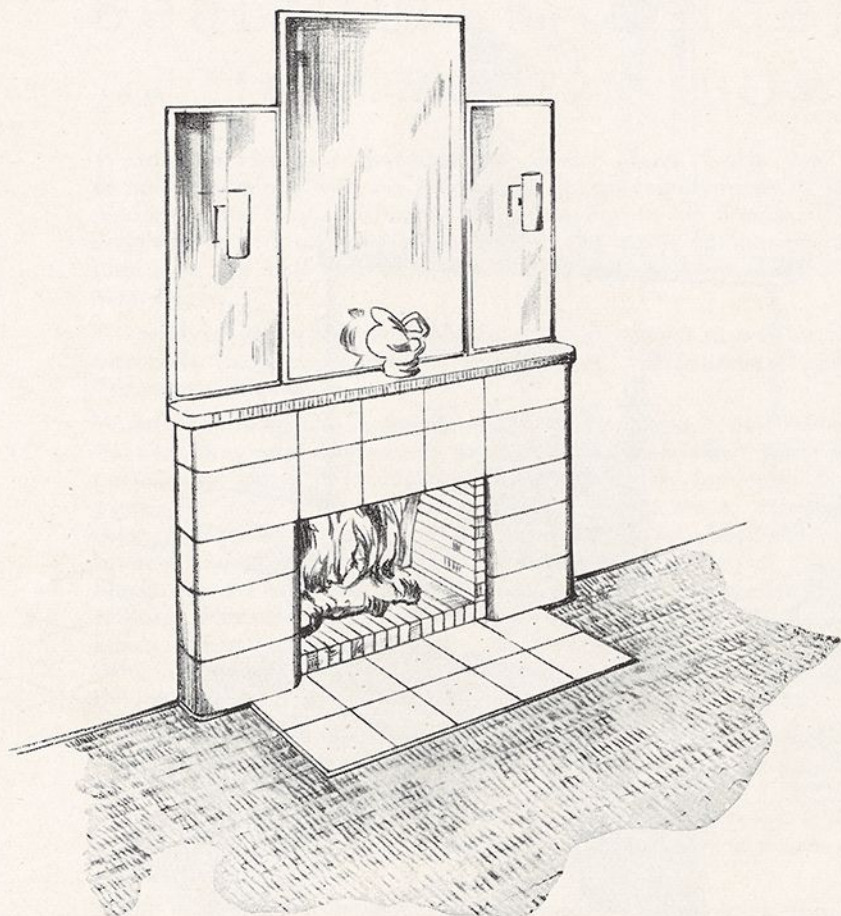
Height to underside of mantel, $3' 4\frac{1}{2}''$
Width (overall) $5' 8\frac{7}{8}''$

Timber mantel-shelf not included.
Hearth Tiles available at extra cost.

NOTE: If the surround is required to stand out or project further from the wall face than the thickness of the surround blocks ($2''$), infilling or return blocks, $4\frac{1}{4}''$ wide, are available on request, at extra cost (see design No. 7A).



F Wunderlich
FIREPLACE SURROUNDS of GLAZED TERRA-COTTA

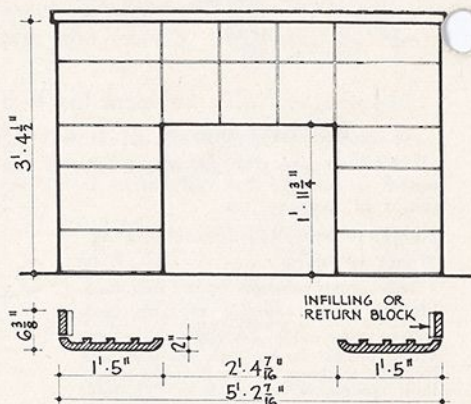


DESIGN No. 7A

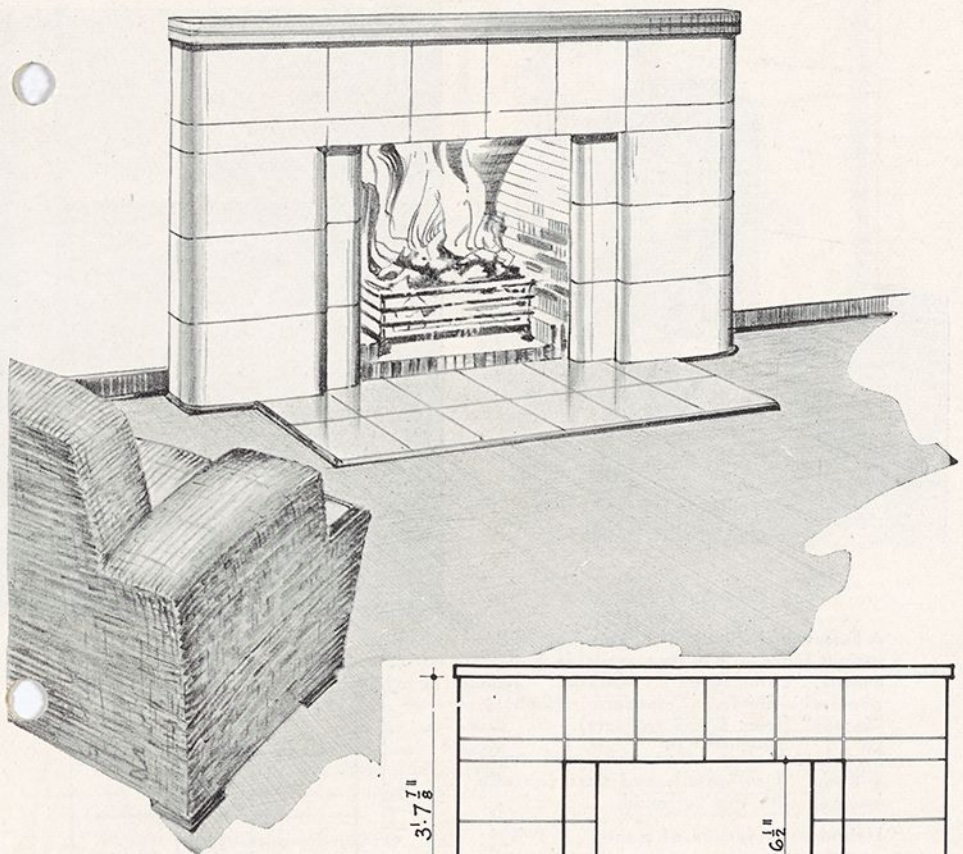
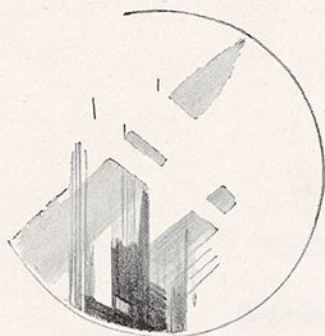
This design is suitable for rooms of average size. Note the infilling or return blocks at sides of the Surround and the Wunderlich Hearth Tiles. The former are available for use with all Surrounds where the chimney breast projects half a brick from the wall face and are supplied on request only, at extra cost, as are Hearth Tiles.

Height to underside of mantel, $3' 4\frac{1}{2}''$
 Width (overall) $5' 2\frac{7}{8}''$

Timber mantel-shelf not included.



Wunderlich
 FIREPLACE SURROUNDS of GLAZED TERRA-COTTA

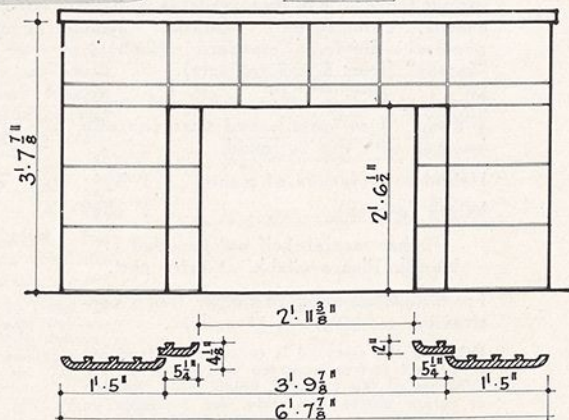


DESIGN No. 8

A Surround for rooms of larger than average size, this design is illustrated on the front page of booklet.

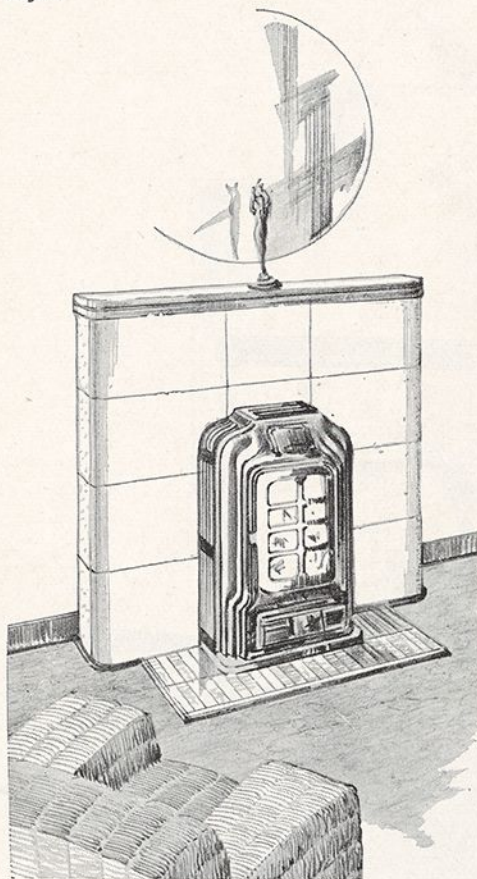
Height to underside of Mantel 3' 7 $\frac{7}{8}$ "
Width (overall) 6' 7 $\frac{7}{8}$ "

Timber mantel-shelf not included.
Hearth Tiles available at extra cost.



NOTE: If the surround is required to stand out or project further from the wall face than the thickness of the surround blocks (2"), infilling or return blocks, 4 $\frac{1}{4}$ " wide, are available on request, at extra cost (see design No. 7A).

Wunderlich
FIREPLACE SURROUNDS OF GLAZED TERRA-COTTA



DESIGN No. 9

A Surround that accommodates most of the various types of gas fires available to-day; namely, "Little Aston," "Fantasia," "Symphonie," "Elegie," "Standard" (Ember), "Serene" (from 5 to 7 radiants).

Slow combustion stoves of usual types ("Kosi," "Esse," etc.), and sizes can also be used with this Surround.

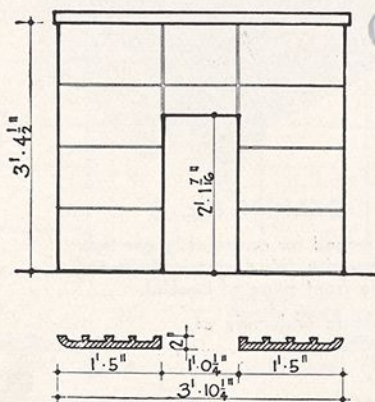
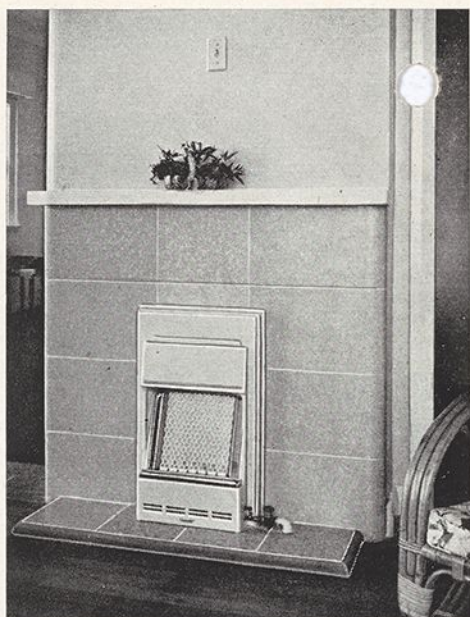
Height to underside of mantel 3' 4½"

Width (overall) 3' 10½"

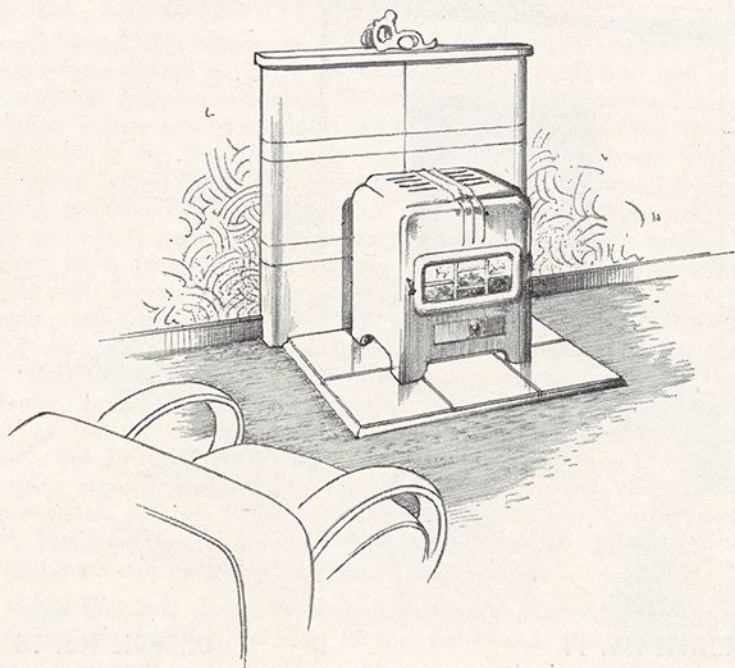
Timber mantel-shelf not included.
Hearth Tiles available at extra cost.

For details of fixing to timber frame construction see pages 9, 11 and 12.

NOTE: If the surround is required to stand out or project further from the wall face than the thickness of the surround blocks (2"), infilling or return blocks, 4½" wide, are available on request, at extra cost (see design No. 7A).



Wunderlich
FIREPLACE SURROUNDS of GLAZED TERRA-COTTA



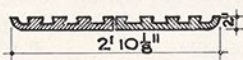
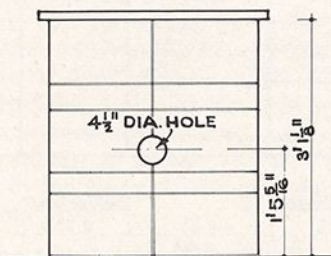
DESIGN No. 17

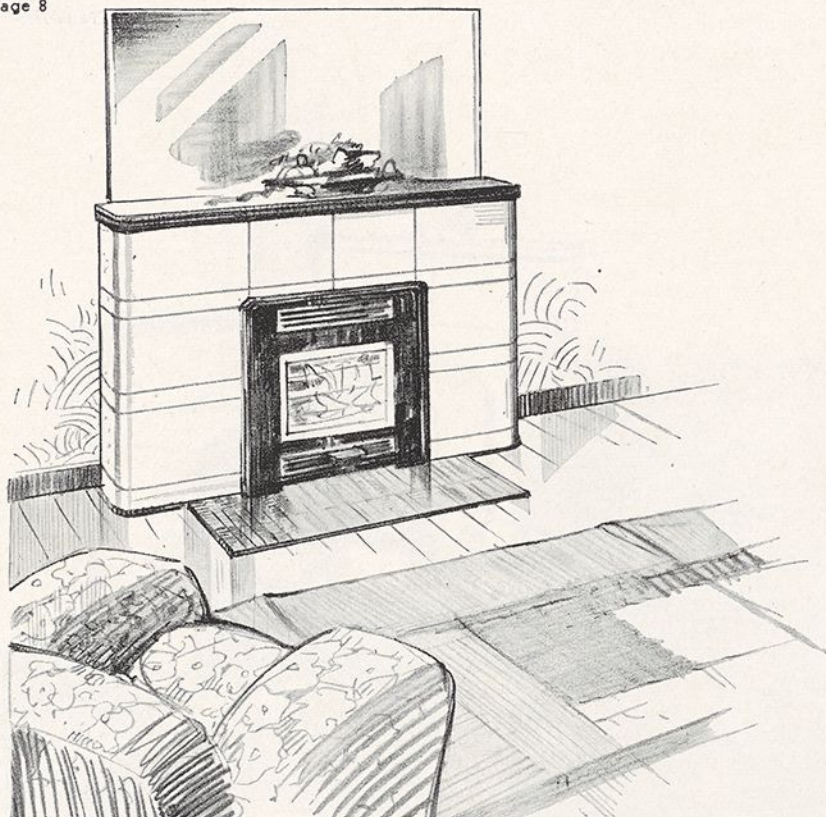
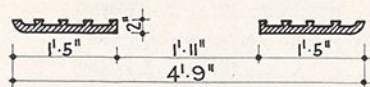
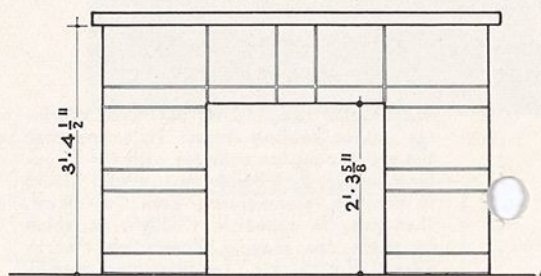
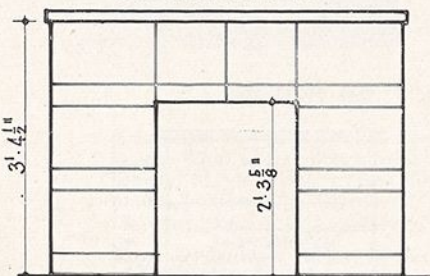
A Surround designed for use with "Warm-ray" space heating stoves. To ensure that the stove adaptor engages with the circular opening, first build the surround blocks in position, commencing from floor level, then provide a hearth, 1" high, on which to place the stove. Wunderlich Hearth Tiles, 10" x 10" x 1" (as illustrated above) are ideal for the purpose and are available at extra cost.

Height to underside of mantel 3' $1\frac{1}{8}$ "
Width (overall) 2' $10\frac{1}{8}$ "

Timber mantel-shelf not included. For details of fixing to timber frame construction, see pages 9 and 11.

NOTE: If the surround is required to stand out or project further from the wall face than the thickness of the surround blocks (2"), infilling or return blocks, 4½" wide, are available on request, at extra cost (see design No. 7A).

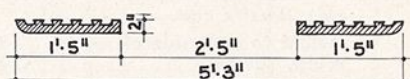


**DESIGN No. 11****DESIGN No. 15**

For use with "Wonderheat" stove —
inbuilt type, Design No. 2.

Height to underside of mantel 3' 4 1/2"

Width (overall) 4' 9"



For use with "Wonderheat" Stove—in-
built type, Design No. 3.

Height to underside of mantel 3' 4 1/2"

Width (overall) 5' 3"

Timber mantel-shelf not included.
Hearth Tiles available at extra cost.

NOTE: If the surround is required to stand out or project further from the wall face than the thickness of the surround blocks (2"), infilling or return blocks, 4 1/2" wide, are available on request, at extra cost (see Design No. 7A).

Wunderlich
FIREPLACE SURROUNDS OF GLAZED TERRA-COTTA

APPROVED METHODS OF FIXING WUNDERLICH FIREPLACE SURROUNDS

TO BRICK CONSTRUCTION . . .

The Glazed Terra Cotta blocks are applied as a surround to brick (or concrete) background—see details on page 10. Every block is numbered and a "key" plan, showing the position of each in the surround, is pasted on the face of one of the blocks. Before proceeding with setting, lay the blocks on the floor in the numerical order of the "key" plan, allow for $\frac{1}{8}$ " wide joints between the blocks, and work to the overall fixing dimensions obtained. Wet the brick (or concrete) background, soak the blocks in water and set in position with cement mortar (one part cement, $\frac{1}{4}$ part lime, three parts clean sand). Tamp mortar firmly behind each block, using a rod or lath, or, if preferred, "butter" the back of each block with mortar before placing in position. To ensure an even $\frac{1}{8}$ " joint, employ strips of timber $\frac{1}{8}$ " thick as joint spacers. Remove when mortar has firmed and point up joints with coloured mortar or gypsum plaster pointing medium. Provide support under lintel blocks until mortar has "set." Where the chimney breasts project a half-brick from the wall face, $4\frac{1}{2}$ " wide "infilling" or "return" blocks, as illustrated, are used; these are available at extra cost. Set Wunderlich Hearth Tiles, size 10" x 10" x 1", in cement mortar; finish around tiles with a timber quadrant moulding. Line the back, cheeks and hearth of open fireplace with small wire-cut clay brickettes, $6\frac{1}{2}$ " x $1\frac{1}{4}$ " x 3". Finish at mantel height with a timber shelf of the desired width. Hearth Tiles are extra to the cost of the surround blocks.

NOTE: Good fireplace design is of paramount importance. When building, adhere to the construction detailed at top right-hand of service sheet No. 7147.

TO TIMBER FRAMEWORK . . .

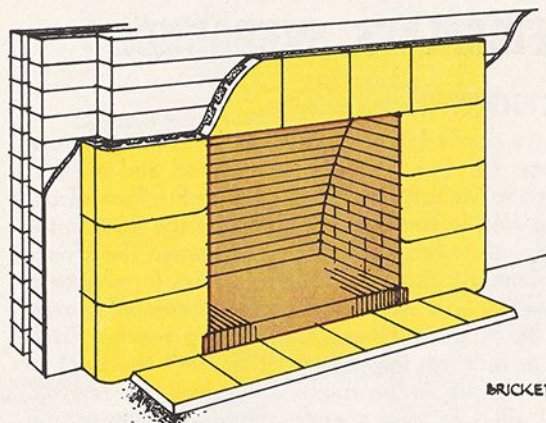
Surrounds for gas fires and slow combustion stoves (Kosi, Esse, etc.) of a type that are insulated at the back against the transmission of heat and are proofed against charring of adjacent woodwork, can be affixed to timber-frame structures as shown by the two drawings, Nos. 7153 and 7154, overleaf. To prepare the background, secure timber fillets to sides of studs, then nail close boarding 1" thick over the area involved, to finish flush with the face of the studs. Cover the close boarded area with waterproof building paper, partly drive 2" nails at 6" centres and turn up heads, as shown, to form a "key" for the cement mortar. Then proceed with the fixing of the surround blocks, as explained under "fixing to brick backing."

GAS FIRES: Should a stud member be positioned where it fouls the fireplace opening, bridge over with timber as indicated by the drawing. Use a metal strap, nailed to studs, as detailed, to support the elbow or flue leading from the back of the fire. Insulate between the strap and the elbow or flue.

SLOW COMBUSTION STOVES: Brick up the opening behind the stove or alternatively use a concrete slab. Build the elbow into the brickwork or concrete accurately to engage with the flue opening at the back of the stove.

SEE DETAILS ON PAGES 11 AND 12

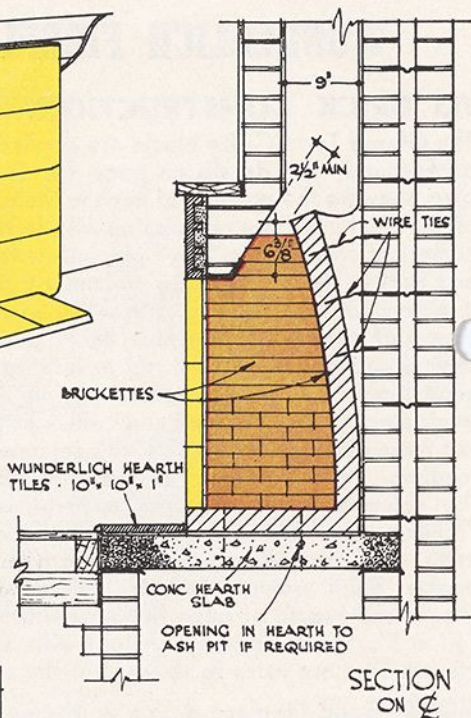
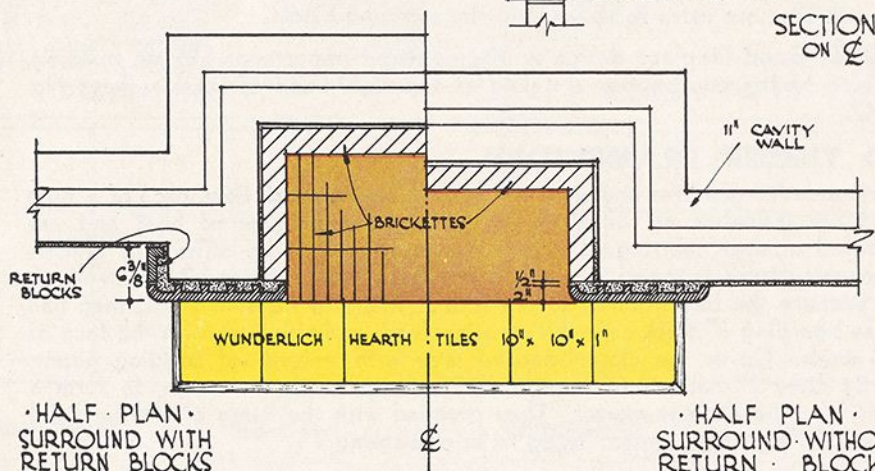
Wunderlich
FIREPLACE SURROUNDS of GLAZED TERRA-COTTA



SKETCH

NOTES :

MINIMUM THROAT WIDTH TO BE $2\frac{1}{2}$ "
 THE AREA OF THE THROAT SHOULD
 EQUAL THE AREA OF THE FLUE

SECTION
ON X-XHALF PLAN
SURROUND WITH
RETURN BLOCKSHALF PLAN
SURROUND WITHOUT
RETURN BLOCKS

SCALE
 $\frac{1}{2}" = 12"$

SERVICE SHEET NO. 7147

FIXING TERRA COTTA FIREPLACE
 SURROUNDS FOR OPEN FIRES
 TO BRICK STRUCTURES . . .

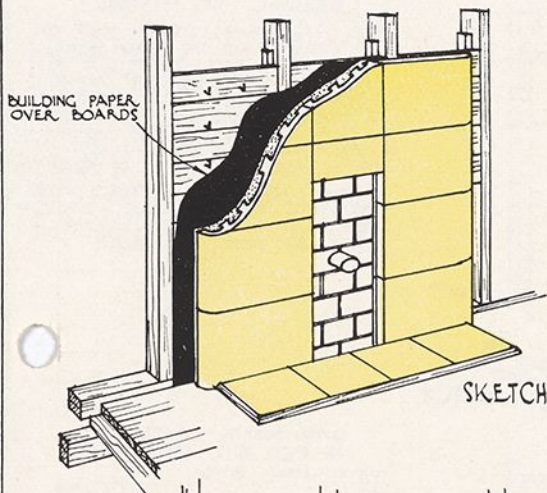
WUNDERLICH LIMITED

TRADE



MARK

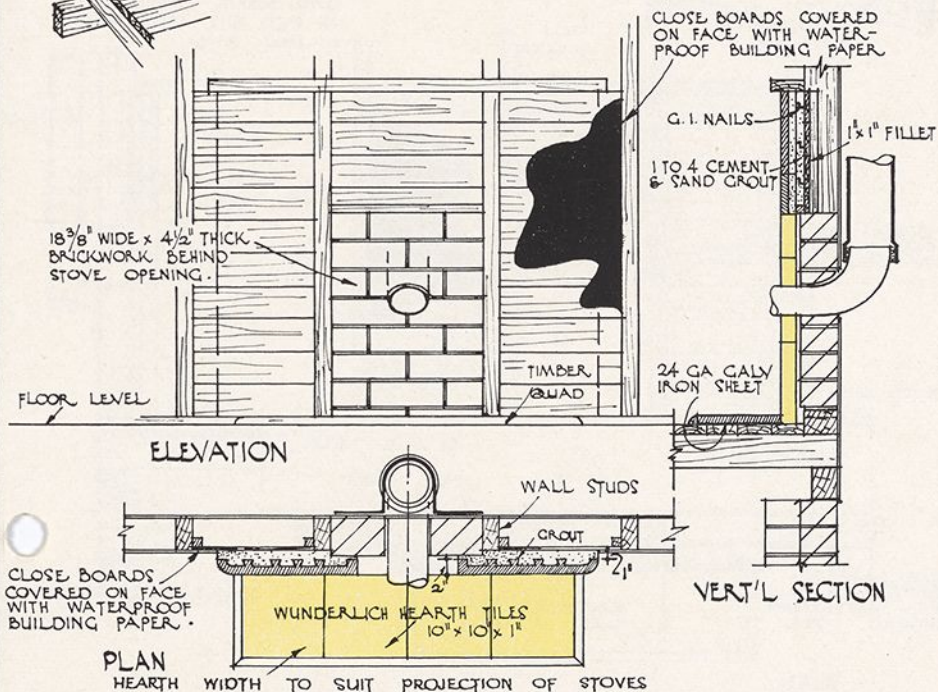
Wunderlich
 FIREPLACE SURROUNDS of GLAZED TERRA-COTTA



SKETCH

METHOD OF FIXING

NAIL 1" TIMBER FILLETS ON SIDES OF WALL STUDS. CUT IN CLOSE BOARDS FLUSH WITH FACE OF STUDS & COVER WITH WATERPROOF BUILDING PAPER. DRIVE IN NAILS AT APPROX 6" APART, PROJECTING 1" & THEN BEND UP ENDS APPROX 1/2" & POUR 1 TO 4 CEMENT GROUT AS THE TERRA COTTA BLOCKS ARE SET IN POSITION



SCALE
1/2" = 12'

SERVICE SHEET NO 7154

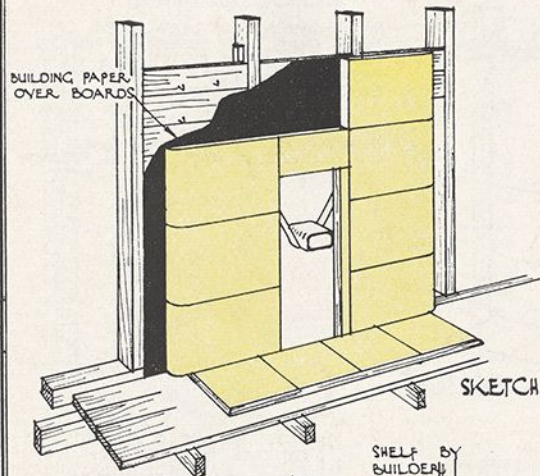
FIXING OF TERRA COTTA SURROUNDS
FOR SLOW COMBUSTION STOVES IN
TIMBER FRAMED STRUCTURES

WUNDERLICH LIMITED

TRADE MARK

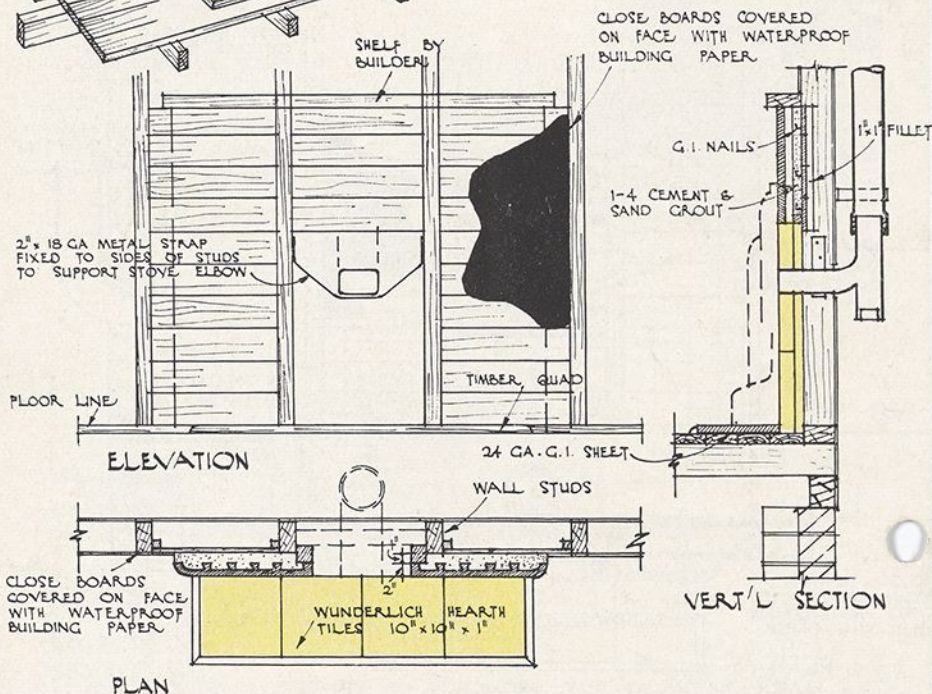


Wunderlich
FIREPLACE SURROUNDS OF GLAZED TERRA-COTTA



METHOD OF FIXING

NAIL 1" TIMBER FILLETS ON SIDES OF WALL STUDS. CUT IN CLOSE BOARDS FLUSH WITH FACE OF STUDS AND COVER WITH WATERPROOF BUILDING PAPER. DRIVE IN NAILS AT APPROX 6" APART PROJECTING 1" AND THEN BEND UP ENDS APPROX 1/2". POUR 1-4 CEMENT GROUT AS THE TERRA COTTA BLOCKS ARE SET IN POSITION. IF STUDS OCCUR IN OPENING BRIDGE OVER WITH 3"x2" TO CARRY STUDS ABOVE STOVE ELBOW AND SCREW STRAP TO FACE OF STUDS.



SCALE
1/2" = 12"

SERVICE SHEET NO 7153

METHOD OF FIXING TERRA COTTA SURROUNDS FOR GAS FIRES IN TIMBER FRAMED STRUCTURES

WUNDERLICH LIMITED



NOTE: It is advisable to raise the hearth for gas fires 3" above the floor level as a safety measure against charring floor coverings.

Wunderlich
FIREPLACE SURROUNDS OF GLAZED TERRA-COTTA

33214013615571