



---

## **Durabestos hydraulically compressed asbestos-cement slates**

AUTHOR(S)

Wunderlich Limited

PUBLICATION DATE

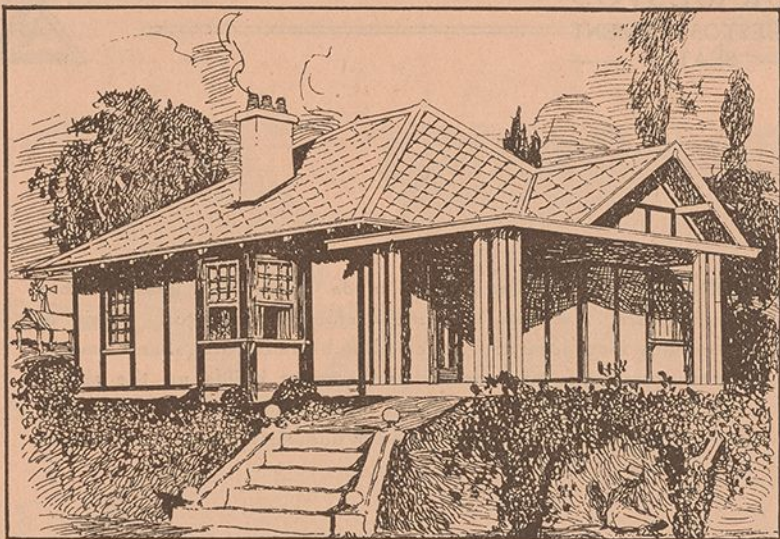
01-01-1922

HANDLE

[10536/DRO/DU:30122174](#)

Downloaded from Deakin University's Figshare repository

Deakin University CRICOS Provider Code: 00113B



WUNDERLICH

“Durabestos”

HYDRAULICALLY COMPRESSED  
—ASBESTOS-CEMENT—

SLATES



WUNDERLICH LIMITED, Manufacturers.



# DURABESTOS

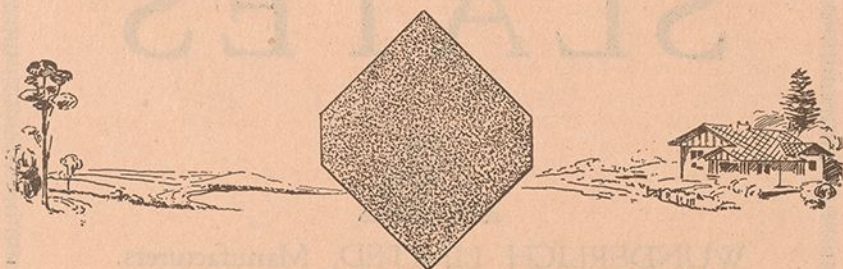
ASBESTOS - CEMENT  
SLATES



DURABESTOS, the Durable, is made from the indestructible mineral-fibre, Asbestos, the most efficient Insulator. This is thoroughly incorporated with tested high-grade Australian Cement. Layer upon layer of asbestos and cement builds up the sheet, which is submitted to powerful hydraulic pressure, forming fine-surfaced, even-graded, finished Wunderlich Durabestos Sheets and Slates.

Throughout the manufacture, the standardisation of materials and work is supervised by a trained technical staff of experts.

For every class of building Durabestos is here to assist you in building with economy, security from fire hazards, durability, proof against all weather, and indestructibility by vermin and white ants.

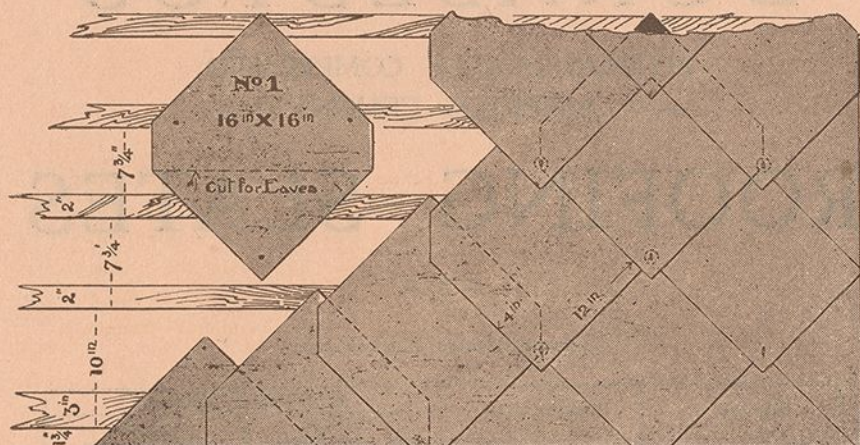


WUNDERLICH LIMITED,  
Manufacturers.

Page Two  
30/7/'22.

# DURABESTOS

ASBESTOS - CEMENT  
SLATES



*Showing method of application for Diagonal Slates.*

*Slates lie diagonally exposed 12 in. x 12 in. to the weather.*

## **How to Fix.**

The construction of a roof covered with DURABESTOS Diamond Shape Slates is the same as with ordinary slate roofing, and can be accomplished by any tradesman. Set out the battens as spaced on diagram, mark on the battens a vertical line for the point of slate; this indicates the position for each slate. Commence laying at the eaves course with cut slates. These are nailed in position. Between the joints of the third row of slates commence to place the copper rivet or crampton. This holds the point of the slates. From this continue on to ridge with whole slates, keeping to vertical line, and the roofing will lie true and even.

100 slates cover 100 super feet of roofing (exclusive of allowance for cutting).

170 lineal feet of 2 in. x 1 in. Oregon battens to square.

100 copper crampton.

1 lb. 1 1/8 in. No. 13 galvanised slaters' nails.

1 lb. 2 1/4 in. No. 11 wire nails for battens.

Total weight slates per 100 square feet equals 320 lbs. fixed.



691.0994  
Wunder  
Dur/001

SPAM

# WUNDERLICH "DURABESTOS"

HYDRAULICALLY COMPRESSED  
— ASBESTOS - CEMENT —

## ROOFING SLATES

□ □ □

Diamond Slates in stock size.

Size No. 1.	Weight each.	Approximate Weights.		
		Crated per 100 Slates.		Shipping Measurements.
16in. x 16in.	3lbs.	Cwt. 2	Qrs. 3	lbs. 17
				Measurement, 4½ cubic feet

DURABESTOS Slates should appeal to every home and builder, because—

*They make an attractive roof and improve the appearance of the home.*

*They last a lifetime without repairs.*

*They are fire, heat, and weather resisting.*

*They improve with age.*

Economy and Durability.—They are less in weight and stronger than ordinary slates, hence a very considerable saving in materials, labor, and freight charges. Wunderlich Durabestos Slates and Sheets can be cut or sawn, and nailed by the use of ordinary carpenter's tools.

## WUNDERLICH LIMITED

Manufacturers.

Head Office:

Baptist Street, Redfern, N.S.W.

Postal Address:

Box 474, G.P.O., Sydney.

SYDNEY:  
56 Pitt Street.  
NEWCASTLE:  
53 Hunter St.

MELBOURNE:  
243 Collins St.  
HOBART:  
St. John St.

ADELAIDE:  
119 Currie St.  
LAUNCESTON:  
Macquarie St.

PERTH:  
Lord St., East Perth  
BRISBANE:  
Amelia St., Valley.

Deaton & Spencer, Printers, Sydney.

33217013615498