



British made rok roofing : the most permanent roofing on the market

AUTHOR(S)

Unknown

PUBLICATION DATE

01-01-1912

HANDLE

[10536/DRO/DU:30122244](#)

Downloaded from Deakin University's Figshare repository

Deakin University CRICOS Provider Code: 00113B

D. Anderson & Son, Ltd.
BELFAST & LONDON

Sole Agents for South Australia —

Sidney H. Stack & Co.

~~41 Grenfell~~ Street, ADELAIDE
30 Waymouth

— REGD. —
TRADE MARK



— ON —
EVERY ROLL

III

ROK ROOFING



695
Rok/Bmr

SPPAM
1309/021

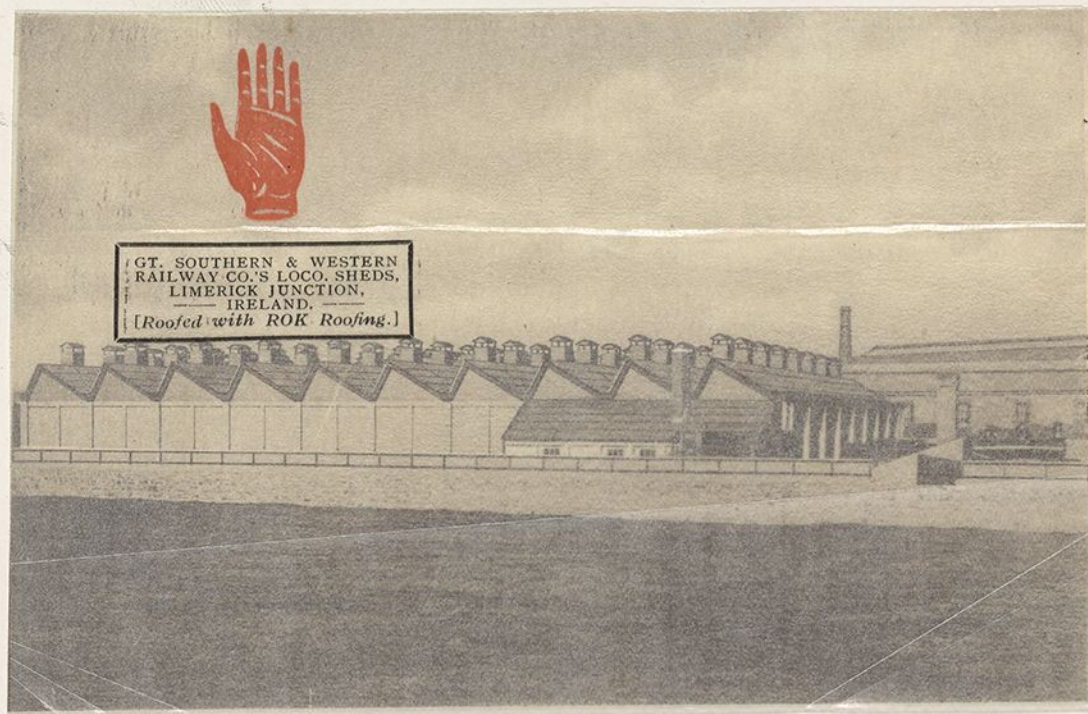


The Most Permanent
Roofing on the Market



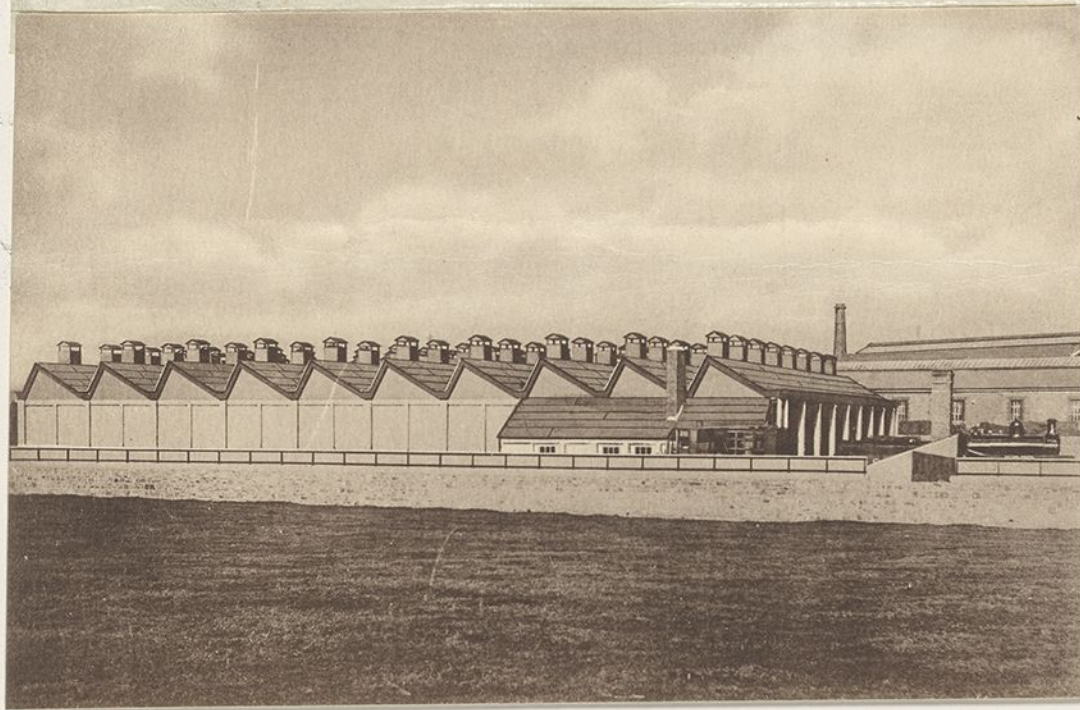
SOLE MAKERS:
D. ANDERSON & SON, Ltd.
Lagan Felt Works, BELFAST.
Roach Rd. Works, OLD FORD,
— LONDON, E —

33217012807054



GT. SOUTHERN & WESTERN
RAILWAY CO.'S LOCO. SHEDS,
LIMERICK JUNCTION,
IRELAND.
[Roofed with ROK Roofing.]

[ROOFING & ROOFING]
— IRON —
FIREBRICK LAYING
KILN & CO'S ROOF SHEDS
ST. LOUIS & WESTERN





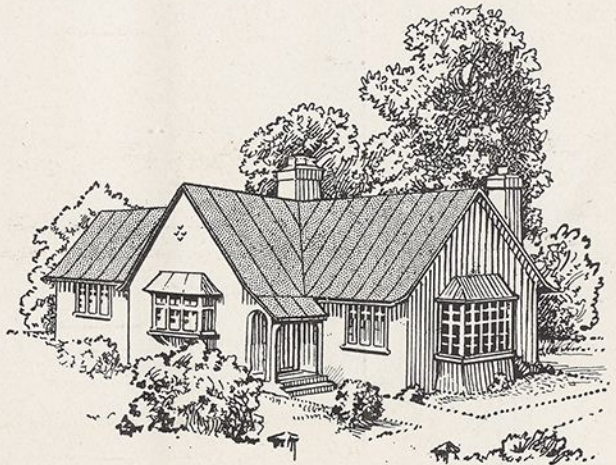
“ROK” ROOFING

is the result of our long experience in the Felt trade. We were supplying Roofing Felt to the British War Office during the Crimean war, so that we can talk about it with authority.



Before putting “ROK” on the market, we submitted it to the severest tests we could make in India, and other tropical countries, and, as a result, we can confidently assert it is the most permanent roofing on the market.

This we are prepared to guarantee with our 60 years' experience.

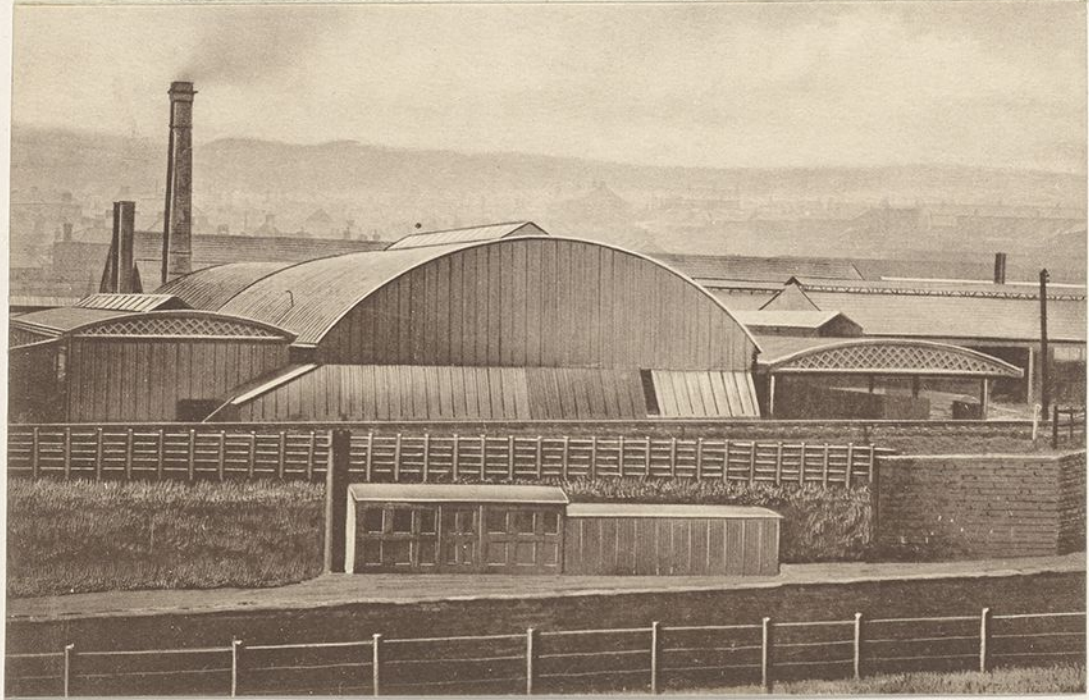


ROK
ROOFING



MESSRS. THE WHITEHEAD
IRON & STEEL WORKS,
TREDEGAR.
[Roofed with ROK Roofing.]

[Booted with BOK Booting]
J. REEDS
IRON & STEEL WORKS
MESSRS. THE WHITEHEAD





Only the highest grade of wool felt is used in its manufacture. This is saturated with an elastic waterproofing compound, which does not dry out or evaporate in any climate, as it contains no oils, or volatile matter.

The coating on the surface is a permanent one, composed of a natural bitumen of very high melting point.

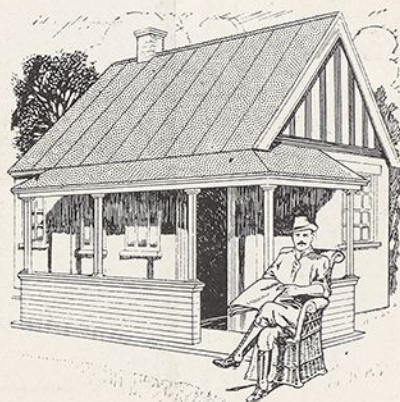
There is nothing of an organic nature in either the saturating or coating compound.

“ROK” is acid and alkali proof.

White ants won't attack it.

Rain water from roofs covered with it can be used for domestic purposes.

Being an excellent non-conductor, it ensures an even temperature, and is therefore an ideal roofing for hot climates.



ROK
ROOFING



MESSRS. GARLICK AND
HOLDCROFT'S PREMISES
—JOHANNESBURG—
[Roofed with two layers of
—2-ply ROK Roofing—]

L&A

— 3-й КОР КОМБ —
[KOR] 3-й КОР КОМБ
— ЮНИВЕРСАЛ —
НОДСКОЛС ЛЕННЕРС
МЕССЕРС САРЛІК ВІД





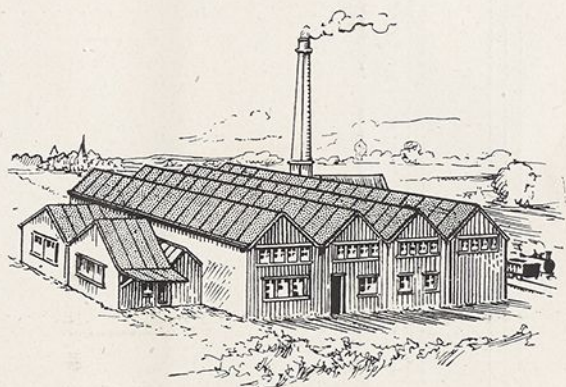
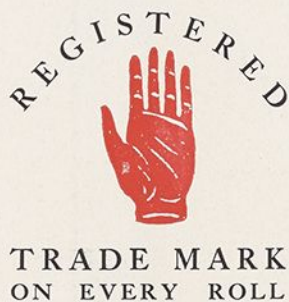
We include in this booklet a few pictures of work done with "ROK," which will give an idea of the wide field which it covers on Railways, Ironworks, Chemical Works, Factories of description, Drill Halls, Bungalows, and Farm Buildings.

It is suitable for Pitched, Flat, or Circular ("Belfast") Roofs.

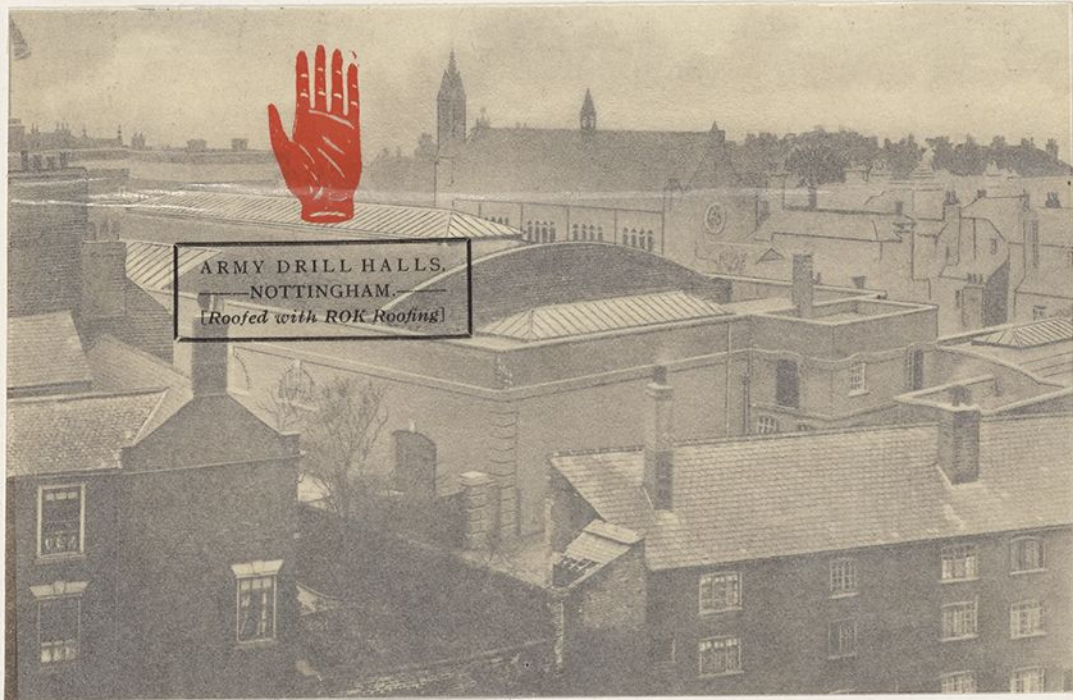
Full directions for its use in each case will be found on pages 19 to 24.

For reinforced Concrete Roofs, it will be found that "ROK" will make a thoroughly water-tight job.

Every roll has on it our registered trade mark—



L & A



[Roofed with KOK Roofing]

—NOTTINGHAM—

ARMY DRILL HALLS





"ROK" Roofing is made in 4 thicknesses. Each roll measures 72 ft. by 3 ft., equal 216 square feet, so as to cover 200 square feet, allowing for overlaps.

The average weights per roll are as follows:

$\frac{1}{2}$ -ply	50 lbs.	2-ply	82 lbs.
1-ply	72 lbs.	3-ply	104 lbs.

These are the net weights of the rolls, and do not include nails, cement, and wrapper.

With each roll we send out 2 lbs. of nails and 1 pint of "ROK" Liquid Cement for jointing the laps. We recommend:—

$\frac{1}{2}$ -ply for sarking or lining purposes, and temporary work.

1-ply for Buildings where a light but permanent roof is required.

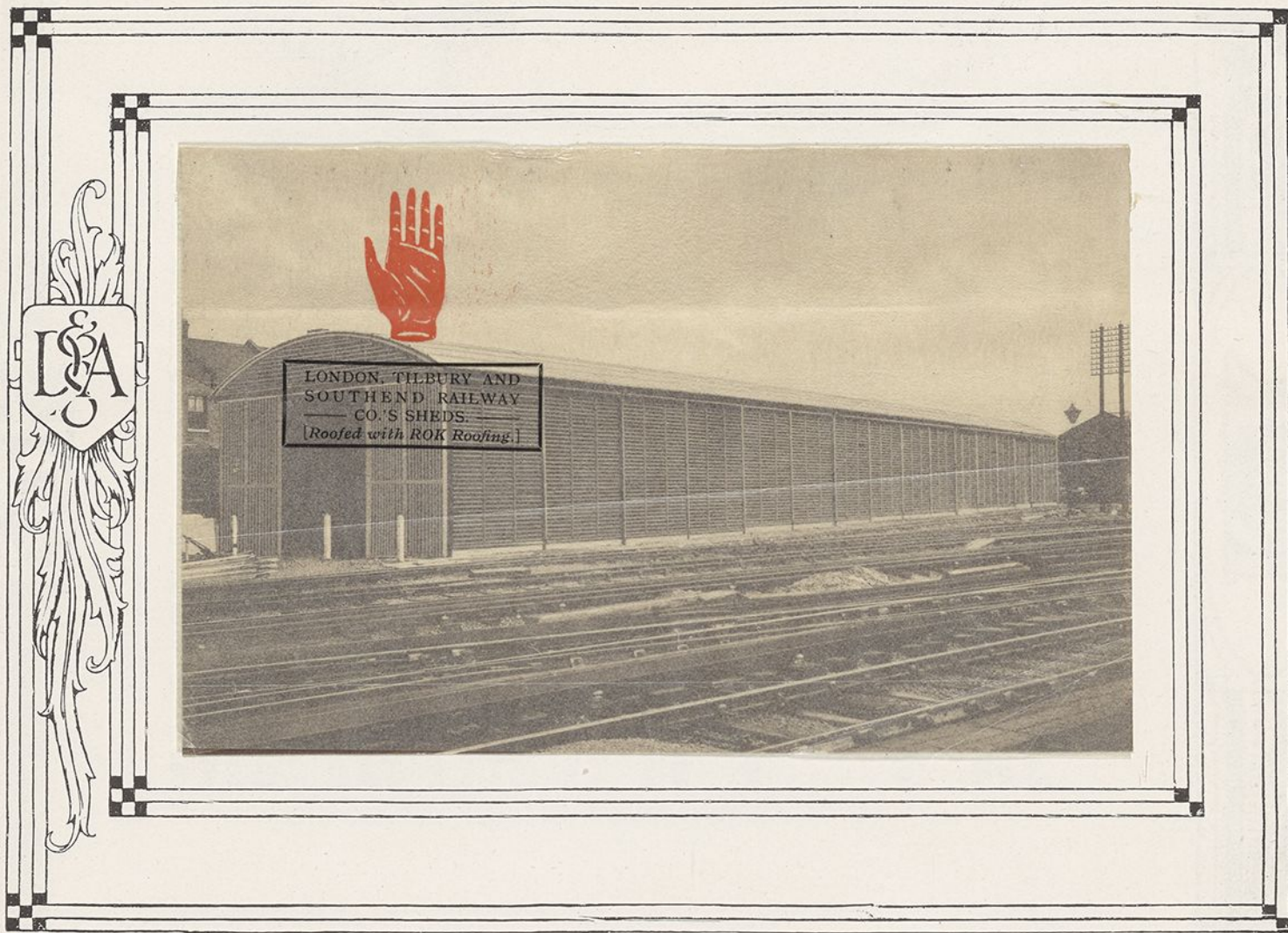
2-ply for Permanent Buildings, Bungalows, Factories, &c.

3-ply for places where the roof is exposed to severe climatic conditions or chemical fumes and gases.

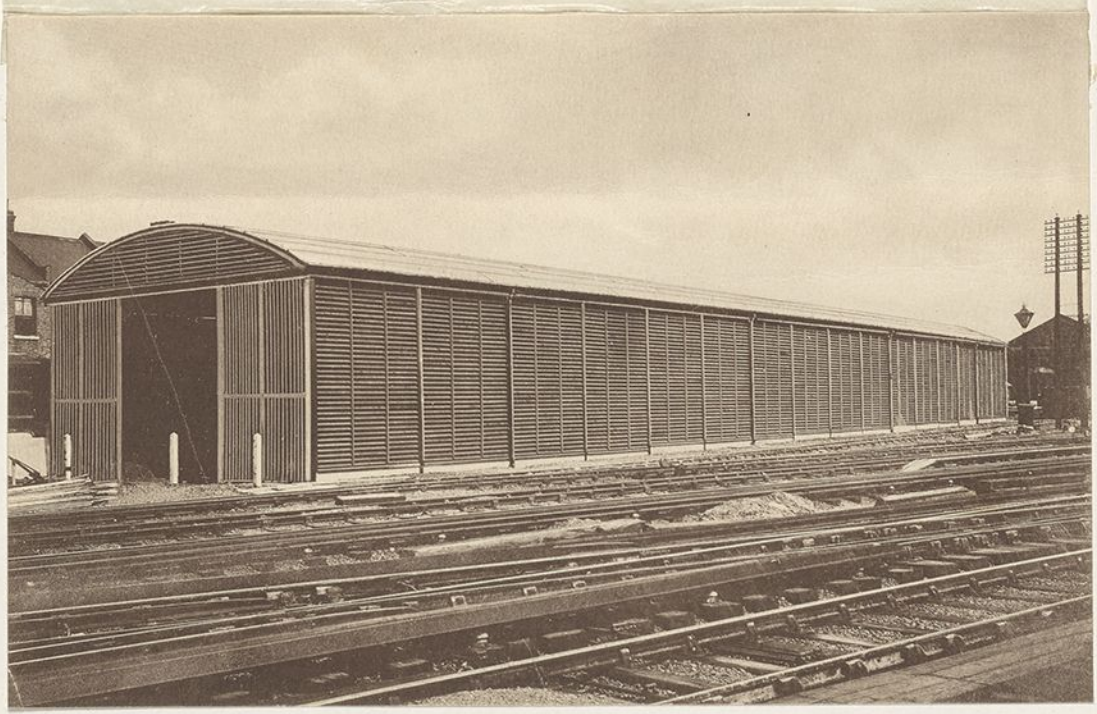


For Prices see inset.

ROK
ROOFING



[Roofed with ROK ROOFING]
CO.'S SHEDS
SOUTHEAST RAILWAY
LONDON, LIVERPOOL AND





“ ROKALBA ”

To meet the requirements of Local Authorities, we have produced a grade of “ROK” covered on one side with a layer of Asbestos, and to distinguish it we have given it the name of “Rokalba.”

It is made in three thicknesses and the average weights are as follows:—

No. 1. 70 lbs. per roll 72 feet by 3 feet.

„ 2. 98 „ „ „ „

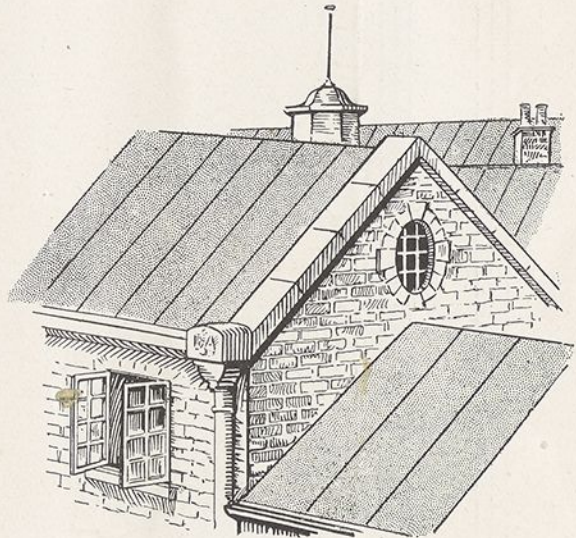
„ 3. 120 „ „ „ „

Exclusive of nails, cement and wrapper.

It renders the Roofing fireproof, and when laid, should be given a coat of Cement Wash or Distemper Paint.

When ordering this quality, specify—
“Rokalba.”

For prices, see inset.



ROK
ROOFING



[Roofed with ROK ROOFING]
— KEELER SHEDS —
AND TRAMWAY CO.'S
THE BRISTOL CARRIAGE





PRICE LIST





PRICES

"ROK" ROOFING.

$\frac{1}{2}$ -ply	-	per roll 72 ft. by 3 ft.
1-ply	-	" " "
Crating for export 5d. per roll extra.		
2-ply	-	per roll 72 ft. by 3 ft.
3-ply	-	" " "
Crating for export 10d. per roll extra.		

Nails and "Rok" Cement for laying are sent with every roll, and included in above prices.

ROKALBA (Asbestos coated "Rok.")

No. 1	-	per roll, 72 ft. by 3 ft.
" 2	-	" " "
" 3	-	" " "
Crating for export, No. 1, 5d. a roll extra.		
"	"	" 2 and 3, 10d. "

Nails and "Rok" Cement for laying are included in above price





“ROK” FLOORING (3-ply “Rok”).

per roll, 72 ft. by 3 ft.

Crating for export 10d. per roll.

“ROK” DAMP COURSE.

Per roll 72 ft. long.

4½ in. 9 in. 14 in. 18 in. 27 in. wide

2-ply “Rok”

3-ply “Rok”

Packing extra.

For special widths prices on application.

HARD “ROK” MASTIC (for Flat Roof Work.)

One cwt. will cover 48 square yards of surface.

Supplied in boxes, containing 1 cwt.

Price per cwt.

“ZEROLITE” INSULATING PAPER.

1-ply - per roll, containing 1,000 sq. ft.

2-ply - ” ” ” ”

3-ply - ” ” ” ”





D. ANDERSON & SON, LTD.

LAGAN FELT WORKS - BELFAST.
ROACH ROAD WORKS, OLD FORD, LONDON.

A decorative horizontal banner at the bottom of the page. It consists of a wide band with diagonal hatching. Centered on this band is the word 'ROK' in a large, bold, serif font, with 'ROOFING' in a smaller font underneath.



“ ROK ” FLOORING

3-ply “ ROK ” laid in the same manner as Linoleum makes an excellent flooring.

It is particularly suitable for schools, Laboratories, Offices, Public Buildings, Shops, Accumulator Rooms, Grain Stores, or where a damp-resisting, permanent and waterproof flooring is desirable.

It makes a cheap and durable floor covering for Verandahs, and passage ways, exposed to the weather.

It won't harbour Vermin.

Won't rot.

Is damp, water, acid and Alkali proof.

Durable and has no smell.

Deadens sound, is a non-conductor, and will stand heavy wear.

For price, see inset.





NEW TOWN HALL,
JOHANNESBURG
(FOUNDATION).
[Showing ROK Damp Course]

[2 МОДЕЛИ БЛОК ДАМП КОНАСТ]
(FOUNDATION)
— ЮННИЕСБУКС —
NEW LOMI HALL





“ROK” FOUNDATION FELT OR DAMP COURSE

The need of Damp Course in construction of Buildings is now universally admitted.

Our 2-ply or 3-ply “ROK” makes a perfect Damp Course.

“ROK” Damp Course is particularly useful for Tropical or Hot Climates, as the ordinary Damp Courses used in Britain are very liable to stick if shipped to such centres, and, being made of low melting compounds, are liable to squeeze out when laid.

“ROK,” being made from a high melting permanent compound, is free from this objection, and can be absolutely relied on for this purpose.

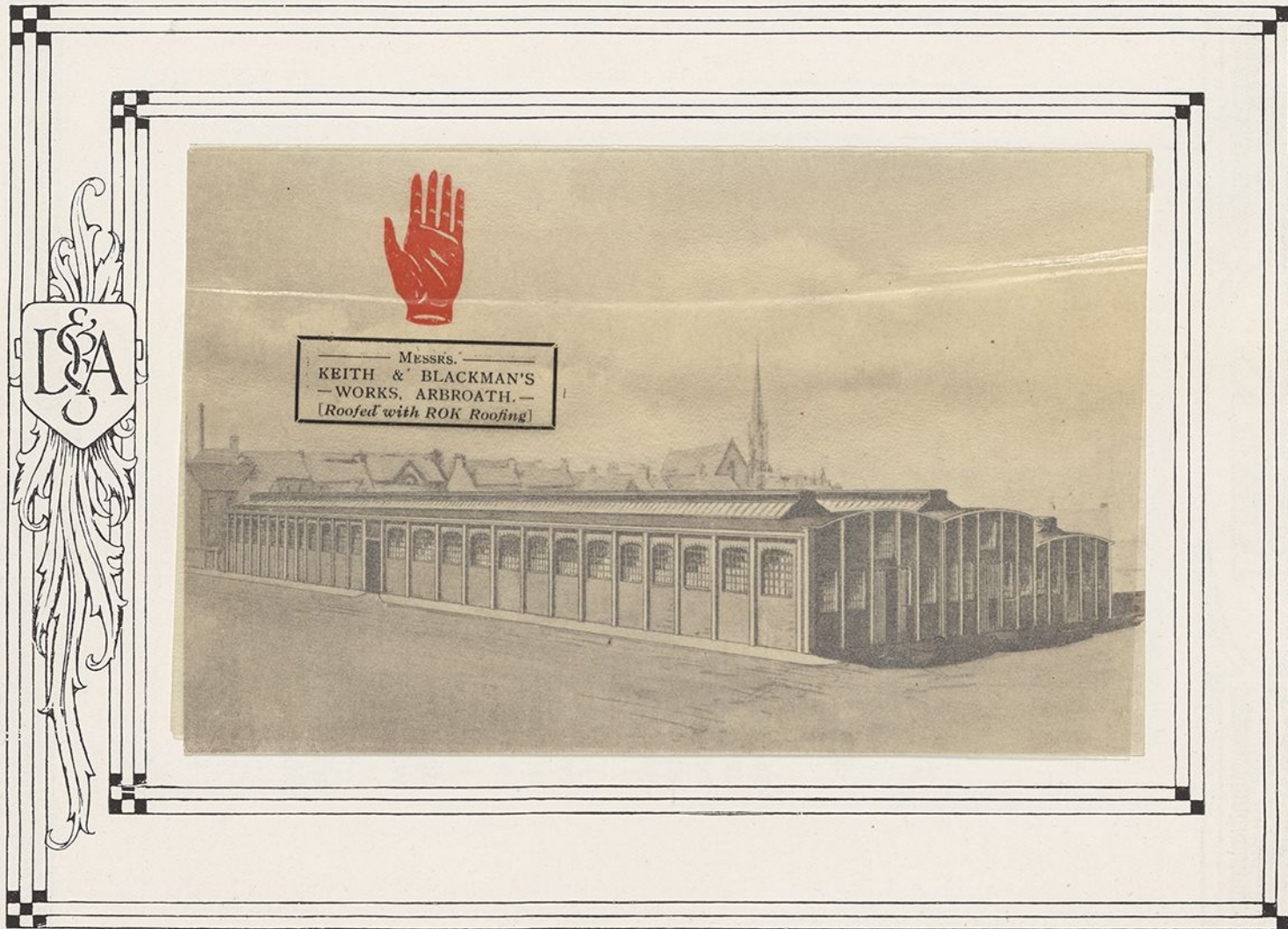
It can also be used over window and door openings, and under window sills in cavity walls, to keep out damp.

It is supplied in widths to correspond with the usual thickness of walls up to 36 inches wide.

Prices—See inset.

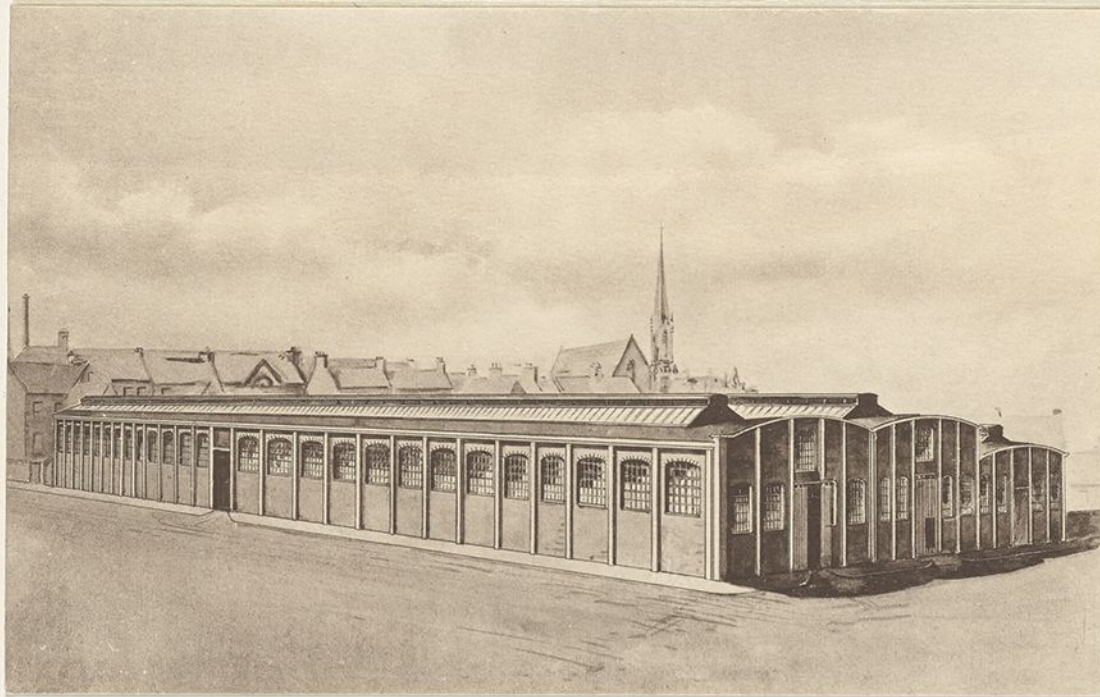
For methods of laying see page 24.





MESSRS.
KEITH & BLACKMAN'S
— WORKS, ARBROATH. —
[Roofed with ROK Roofing]

[ROOFED WITH BOK ROOFING]
—WORKS' APPEALING—
KEITH & BLACKMAN'S
MISSES.





“ZEROLITE” INSULATING PAPER

Is made of rope Manilla Fibre, which gives it great tensile strength.

Is saturated and coated with an absolutely odourless and waterproof compound, and is rot and vermin proof.

Unaffected by acid or alkali fumes.

Will not change or deteriorate with age.

Is made in rolls 333 $\frac{1}{3}$ feet by 3 feet = 1,000 sq. feet.

1-ply (weight per roll 46 lbs.)

2-ply (weight per roll 66 lbs.)

3-ply (weight per roll 106 lbs.)

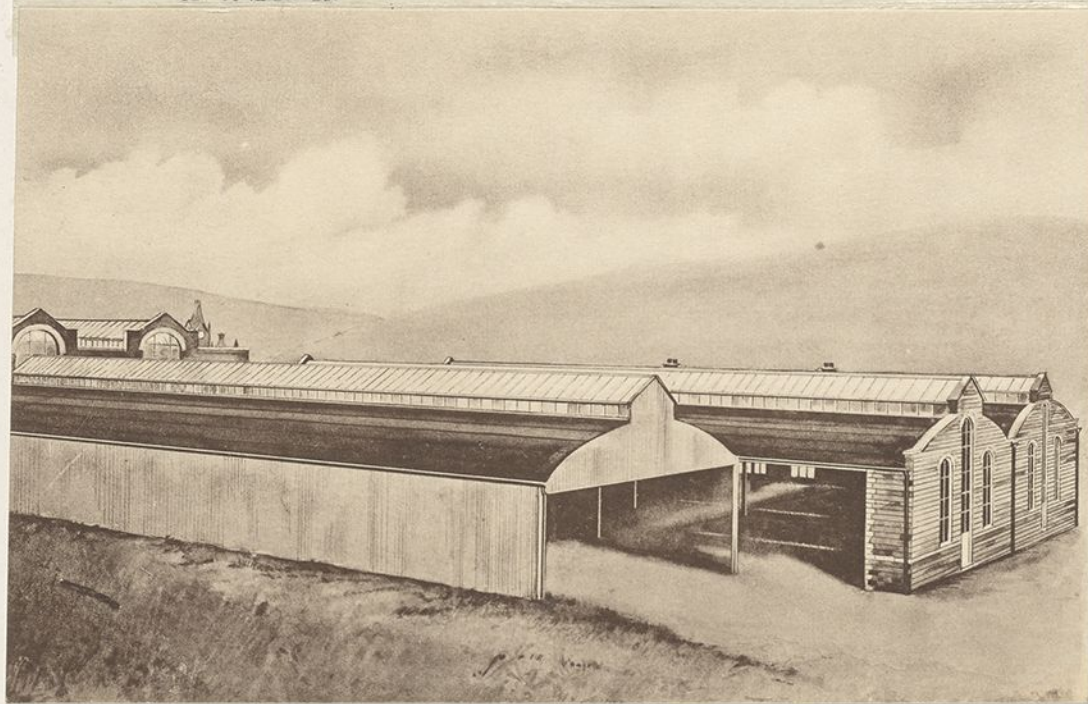




MESSRS. HUTCHINSON,
HOLLINGSWORTH & CO.'S
— WORKS, DOBCROSS. —
[Roofed with ROK Roofing]



[BORDER WITH BOX BORDER]
— WORKS' DOVSKOZS —
HOTTINGSMOVLN & CO.'s
MESSRS. HUTCHINSON





Directions for Laying "Rok" Roofing on Belfast Roofs, or on Ordinary Pitched Roofs

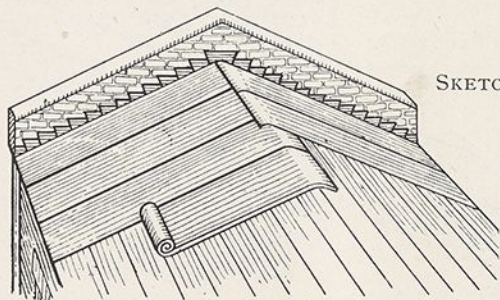
Unroll the "ROK" Roofing and expose it to the weather for a few days before fixing. This will allow it to expand and remove any wrinkles.

Roof boards should be of seasoned timber, uniform in thickness and laid close together.

Sweep roof clean, cover knot holes with small piece of Roofing or tin.

If applied over an old roof, see that all boards are sound, and all nails driven in so as not to puncture Roofing.

Lay "ROK" from ridge to eave, carrying it over three or four inches on each side of the ridge. This forms a double lap and protects the ridge. See sketch 1.

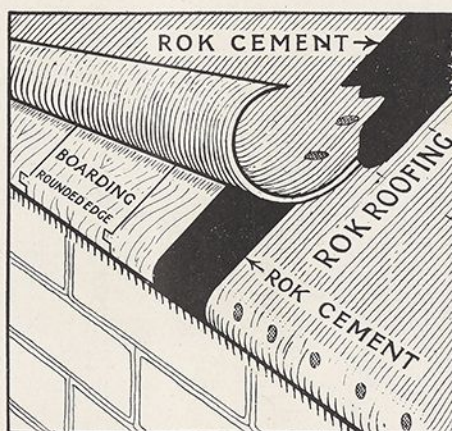


SKETCH 1.

Each length should overlap the adjoining length 3in.

Remove the powder from the edge with a cloth and coat well with "ROK" Cement between the laps.

See sketch 2.



SKETCH 2.

ROK
ROOFING



"ROK" Cement must not be heated, and should be applied with a brush.

It is not advisable to lay the material during or immediately after rain or snow, as "ROK" Cement cannot then be properly applied, nor will it adhere firmly to a wet surface.

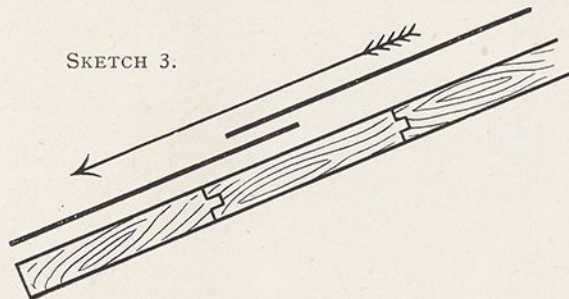
Start nailing at the top, spacing nails 2in. apart and $\frac{3}{4}$ in. from edge.

Coat nail heads and seams with a neat band of Cement 2in. wide, using chalk lines to make edges of band straight and neat.

If the boards are laid horizontally the joints between them should be marked on the "ROK" with chalk to avoid driving nails between the boards.

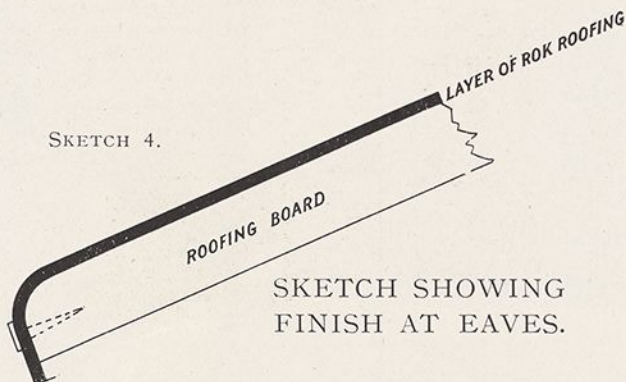
Horizontal joints should be made so that they do not obstruct the free flow of the water over the roof. See sketch 3.

SKETCH 3.



All edges of boarding at eaves or elsewhere should be rounded to avoid any risk of cutting the "ROK." See sketch 4.

SKETCH 4.



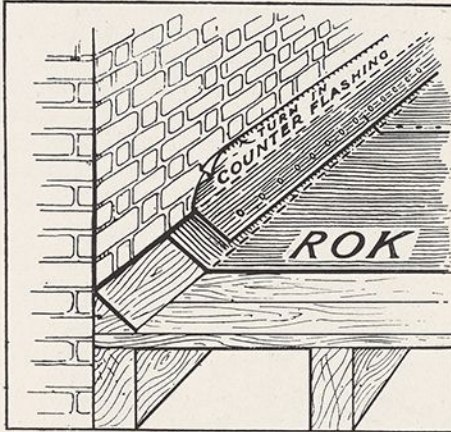
SKETCH SHOWING
FINISH AT EAVES.

ROK
ROOFING



Flashings—to brick parapets or walls or chimneys should be carried out as follows :—

Fix a small angle fillet of wood as shown in sketch 5, carry the “ROK” up over it, nailing it at the same time.



SKETCH 5

A counter flashing of “ROK” should be let into the brickwork and dressed down so as to overlap the flashing, and stick with “ROK” Cement.

The joint of the brickwork where the counter flashing has been let in should then be filled with Cement Mortar.

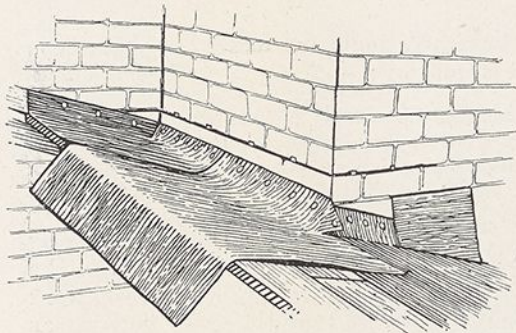
If preferred, lead or zinc flashings can be used instead.

For flashing an external angle, proceed as shown in sketches 6a, 6b, and 6c.



6A FIRST PROCESS

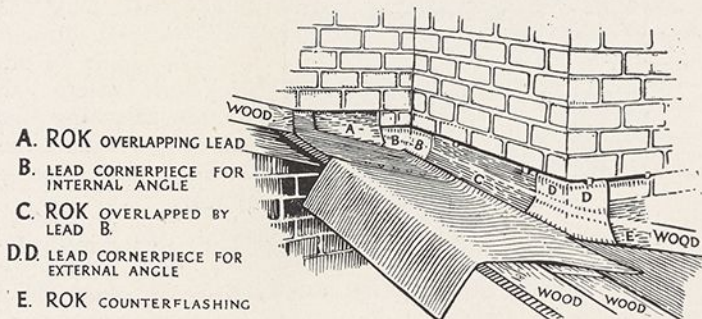
ROK
ROOFING



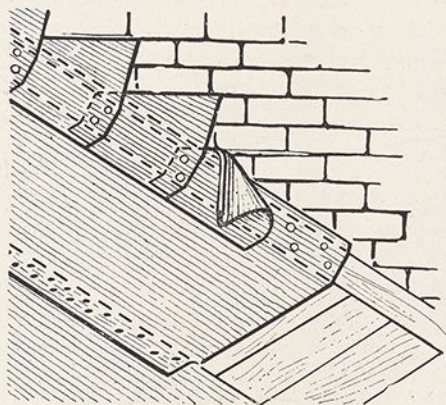
6B SECOND PROCESS

Overlap the flashings at the corner and cover joint with corner piece of lead let into brickwork above as shown in illustration in 6c.

We recommend the use of lead corner piece but if lead cannot be obtained, "ROK" can be used instead.



6C THIRD PROCESS



SKETCH 7

Step-Flashing.—Where step-flashings are necessary at gable walls, proceed as shown in sketch 7.

It will be seen the "ROK" is carried up over the angle fillet, and that the counter flashing is made of short pieces of "ROK" let into the brickwork and cut on a bevel to let the water fall away from the counter flashing.

ROK
ROOFING



Cesspools and Outlets should be lined with lead or zinc and the "ROK" turned over and nailed and cemented to the sides.

Gutters and Valleys should be made of two layers of the "ROK" cemented together, only the under layer being nailed. No nails must be driven through the top layer.

DIRECTIONS FOR LAYING ON FLAT ROOFS

Unroll the "ROK" Roofing and expose to the weather for a few days before laying. This will allow it to expand and remove any wrinkles.

We recommend a fall of not less than 1ft. in 40.

Two layers of "ROK" should be used for flat roofing to make an absolutely permanent job.

In the case of laying on concrete or asphalt, melt the hard "ROK" Mastic, and cement the first layer of "ROK" to the surface, then give a second coat of the Mastic on this layer, and roll the second layer of "ROK" into the hot coating, *under pressure*. Rollers should be used. This will make a solid job.

The greatest care should be taken to see that the joints are well broken.

In the case of a wooden roof, nail the first layer of "ROK" to the boards, then proceed as above.

As regards flashings, etc., follow the directions given for pitched roofs.

Where cost is a consideration, a watertight roof can be constructed on concrete or asphalt, with one layer of "ROK."

In this case, after the coat of Hard "ROK" Mastic has been melted and spread over the concrete or asphalt, the "ROK" should be laid and rolled in, the edges being butted and covered with a strip of "ROK" 6in. wide, which should overlap 3in. on each side of the butt joint, and be cemented down with the Hard "ROK" Mastic.



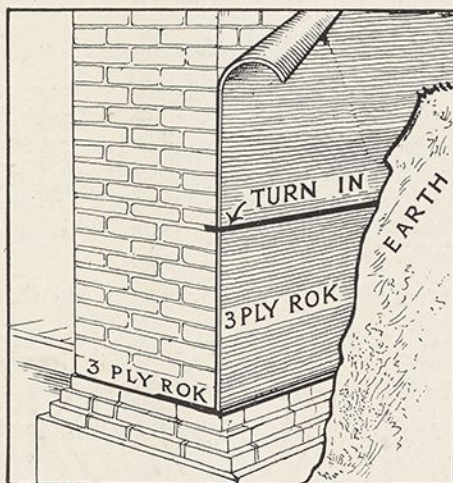


For a permanent job, however, we strongly advise the use of two layers of "ROK," certainly in all cases where a wooden surface is to be covered.

Where the roofs will be subject to traffic or used for garden purposes, they should be protected with a rendering of 1in. of sand and cement mixed in the proportion of four of sand to one of cement.

METHOD OF LAYING DAMP COURSE

Horizontal Damp-coursing.—For this purpose we recommend our 2 or 3-ply grade. It is sold ready for use, and is laid in the ordinary way. Where joints occur the material should be lapped 6in.



SKETCH 8

Vertical Damp-coursing.—For vertical damp-course use 3-ply grade in 36in. width. This applied horizontally along the face of the wall as the bricks are laid and turned into the brickwork at least 3in. at joints. The "ROK" is cemented to the vertical face of the wall with Hard "ROK" Mastic which is used hot, and the "ROK" is then given a coat of the Mastic over its exterior surface. See sketch 8.



1912

D. Anderson & Son, Ltd.
BELFAST & LONDON

Sole Agents for South Australia —

Sidney H. Stack & Co.

41 Grenfell Street, ADELAIDE
30 Waymouth

— REGD. —
TRADE MARK



— ON —
EVERY ROLL

III

ROK
ROOFING