



Modern homes of Hardie's "Fibrolite" : artistic, durable, fire retardant, economical

AUTHOR(S)

James Hardie & Coy. (N.Z.)

PUBLICATION DATE

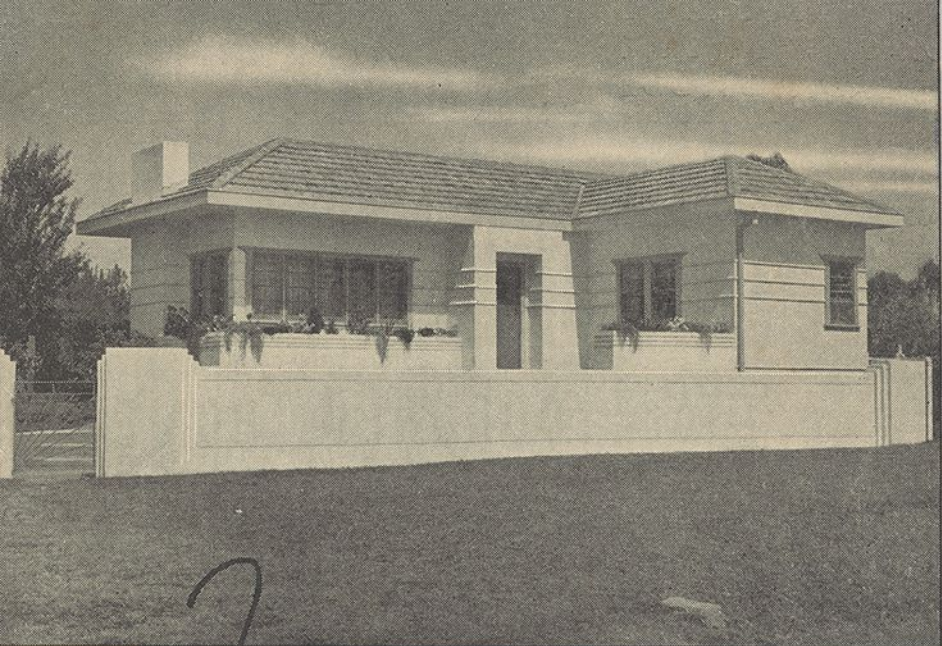
01-01-1948

HANDLE

[10536/DRO/DU:30122245](#)

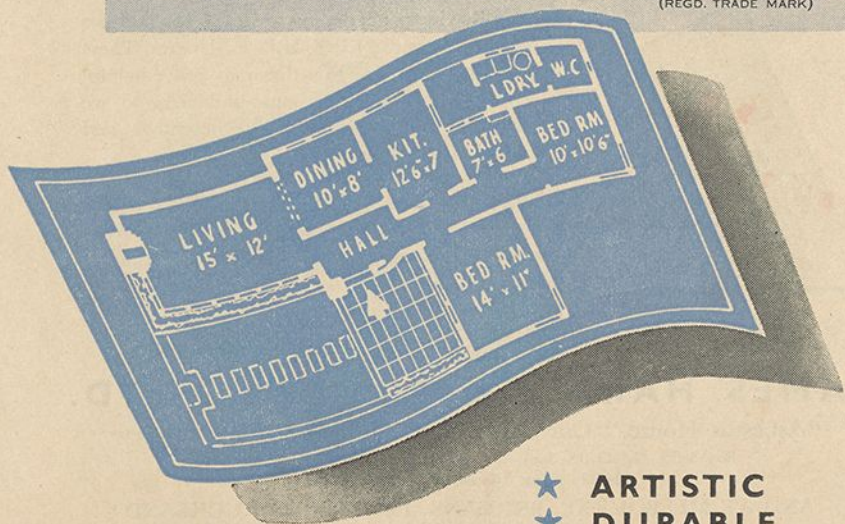
Downloaded from Deakin University's Figshare repository

Deakin University CRICOS Provider Code: 00113B



Modern Homes of
HARDIE'S "FIBROLITE"

(REGD. TRADE MARK)



- ★ ARTISTIC
- ★ DURABLE
- ★ FIRE RETARDANT
- ★ ECONOMICAL

Hardie's "FIBROLITE"

REGD. TRADE MARK

for YOUR NEW HOME

Into that new home you contemplate building will go many years of planning and saving. Now, *before you build*, is the time to make sure that when erected it will be a sound investment . . . that it will faithfully measure up to your expectations of comfort, appearance and durability.

By planning to use HARDIE'S GENUINE "FIBROLITE" Building Sheets for exterior and interior walls and ceilings, and "FIBROLITE" Corrugated Sheets for roofing, you will have the satisfaction of knowing NOW, *before you build*, that your new home will be as attractive, as comfortable and as durable as a modern building material can make it.



In the following pages designs are given of a number of modern types of "FIBROLITE" Homes. These are offered in the hope that they may prove helpful as a guide to prospective home-builders who are planning to build with this economical and durable building material.

HARDIE'S GENUINE "FIBROLITE" Building Sheets are stocked by leading Hardware Merchants, Storekeepers and Timber Merchants throughout Australia.

SOLE MANUFACTURERS OF "FIBROLITE":

JAMES HARDIE & COY. PTY. LTD.

"Asbestos House," Cnr. York and Barrack Streets, Sydney

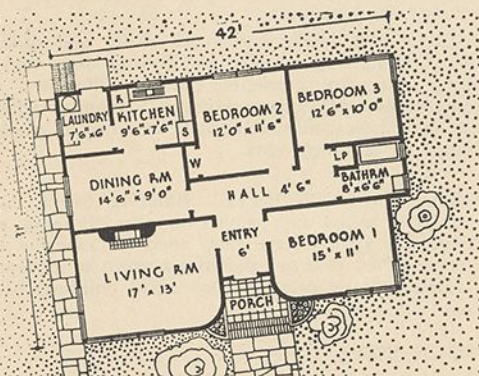
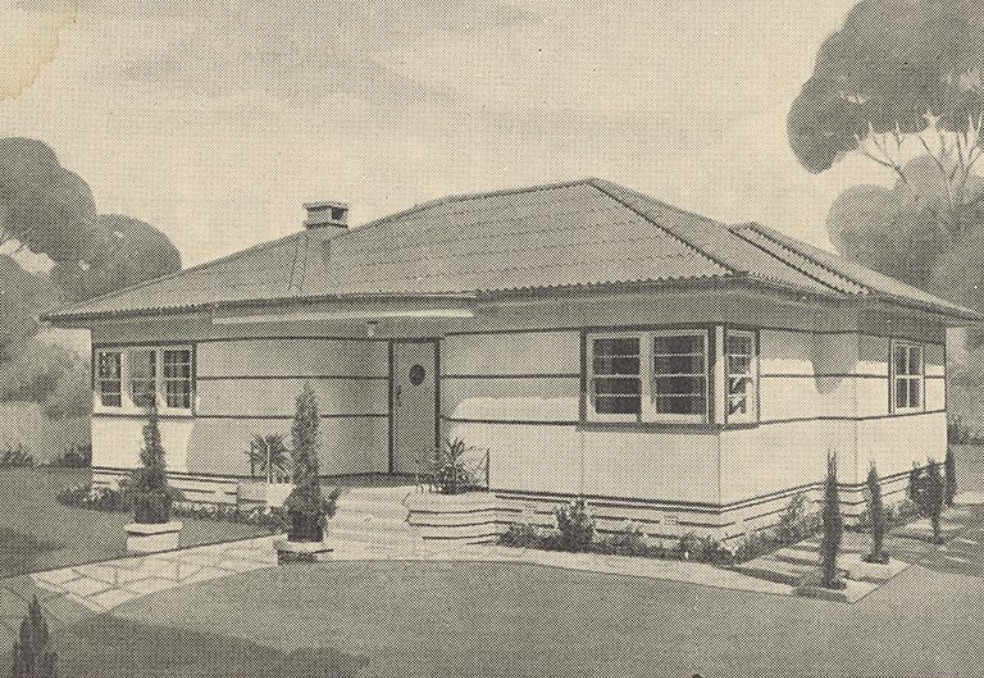
Box 3935, G.P.O., Sydney - - - Telephone: BX 1851 (10 lines)

324-326 King Street, Newcastle West

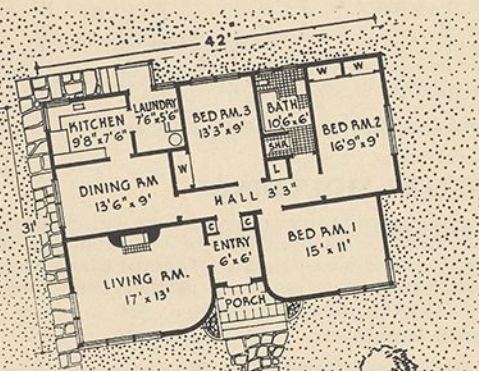
AND AT MELBOURNE, BRISBANE, PERTH AND AUCKLAND

Copyright, 1st March, 1948

33217012808060



Plan "Fibrolite" Home Design No. 307



Alternative plan for "Fibrolite" Home Design No. 307

"FIBROLITE" HOME DESIGN No. 307

AREA :
1,200 sq. ft.

We do not build "Fibrolite" Homes. Any builder in your district will give you an estimate for a "Fibrolite" Home built to your plans and specifications.



HOW "FIBROLITE" IS SUPPLIED

TYPES OF PRODUCTS MANUFACTURED AND THEIR USES

HARDIE'S "FIBROLITE" is a Strong, Durable, Fire Retardant, and Economical building material for walls, ceilings, partitions, roofing, etc., of homes and buildings of all types.

"FIBROLITE" FLAT SHEETS :

A strong, rigid and smooth-surfaced building sheet for covering exterior and interior walls, ceilings, partitions, gable-ends, for lining under eaves soffits, etc., of homes, seaside cottages and buildings of all types.

"FIBROLITE" Flat Sheets are easily and quickly erected, being simply nailed to the wall studs and/or ceiling joists. Any carpenter can fix "Fibrolite." No special tools or labour are required. Labour is reduced and waste practically eliminated, resulting in marked savings in building costs.

HARDIE'S "FIBROLITE" Building Sheets have been tried, tested and proved for over 28 years, and during this period have been used for exterior and interior walls, ceilings, partitions, etc., in thousands of attractive and durable homes and buildings of all types.

STOCK SIZES :

Thickness of Sheets, $\frac{3}{16}$ inch

4' 0" wide	x 3', 4', 5', 6', 7', 8', 9' and 10' long
*3' 0" "	x 3', 4', 5', 6', 7', 8', 9' " 10' "
*2' 0" "	x 3', 4', 5', 6', 7', 8', 9' " 10' "
*1' 6" "	x 3', 4', 5', 6', 7', 8', 9' " 10' "
*1' 0" "	x 3', 4', 5', 6', 7', 8', 9' " 10' "

**These widths limited to 20% of any order.*

"FIBROLITE" MOULDINGS :

Manufactured in various types for use with "Fibrolite" Flat Sheets, including "Fibrolite" Horizontal Mouldings for horizontal panelling of sheets, Cover Mouldings for vertical or horizontal panelling, and Internal and External Angle Mouldings.

Stock lengths : 6', 7', 8', 9', and 10'.



"FIBROLITE" CORRUGATED SHEETS :



A permanent roofing of pleasing appearance for homes and buildings of all types. Especially suitable for sea-side cottages and farm and station buildings. Rust proof, immune to sea-air and ensures cooler indoor temperatures in summer.

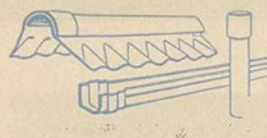
Manufactured in two types, viz. :—

"Fibrolite-Standard" Corrugated Sheets, with small 3" pitch corrugations. Width of sheets, 2' 7½", for fixing with side lap of 1½ corrugations.

"Fibrolite" Super-Six (Regd.) Corrugated Sheets, with large 5¾" pitch corrugations. Width of sheets 3' 5¼", for fixing with a nominal side lap of 2" or 7", as desired.

Stock lengths : 4' 0", 5' 0", 6' 0", 7' 0", 8' 0", 9' 0", 10'.

"FIBROLITE" ROOFING ACCESSORIES :



A large range of accessories are manufactured for use with "Fibrolite" Corrugated Sheets, including "Fibrolite" Gutters and Downpipes, Ridge Cappings, Barge Mouldings, Skylights, Roof Ventilators, etc. Particulars on application.

"FIBROLITE" FLUE PIPES AND FITTINGS :



Manufactured in various sizes for gas stoves, bath heaters, slow-combustion stoves, etc. Rust proof and resistant to sea-air. Particulars on application.

"TILUX" :



A "marble-finished" wall panel with a smooth, highly-glazed surface. Artistic, hygienic and easy to clean. Ideal for lining walls of bathrooms, kitchens, pantries, shops, surgeries, etc.

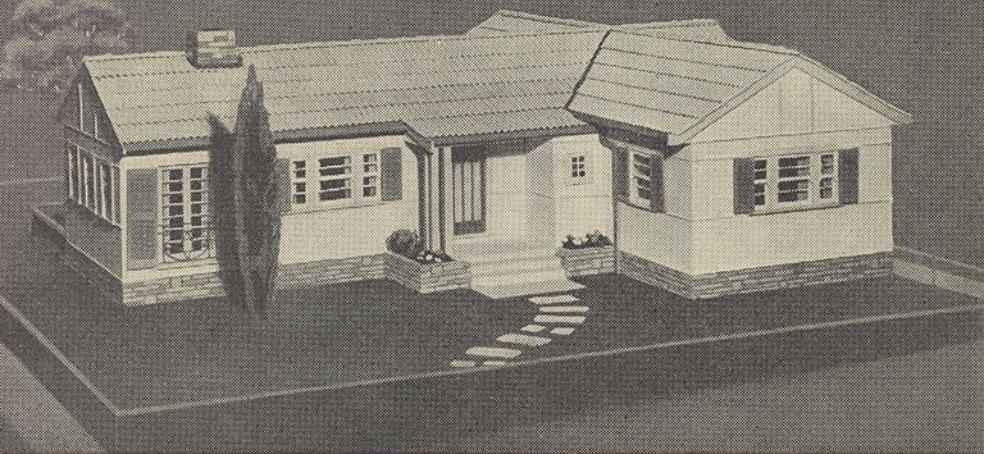
*"VELOTILE" :



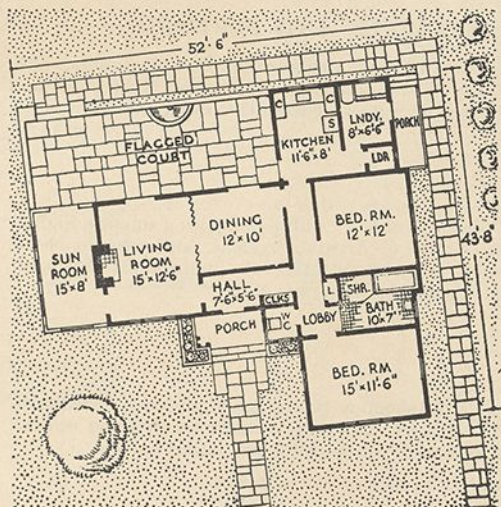
A wall tile sheeting patterned to give the appearance of 4" x 4" tiles. Especially suitable for covering walls of bathrooms, kitchens, pantries, laundries, etc.

** Manufacture temporarily suspended.*

WHEN YOU BUILD, specify and insist on HARDIE'S GENUINE "FIBROLITE" . . . the Economical and Durable building material for walls and ceilings. Tried, Tested and Proved for over 28 years.



**"FIBROLITE"
HOME DESIGN
No. 302**



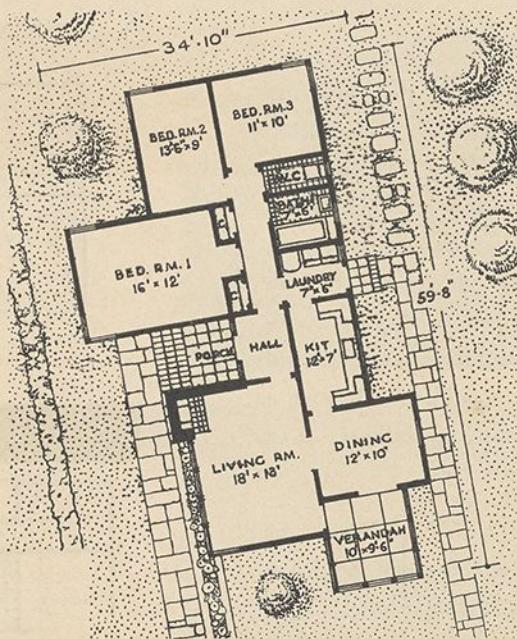
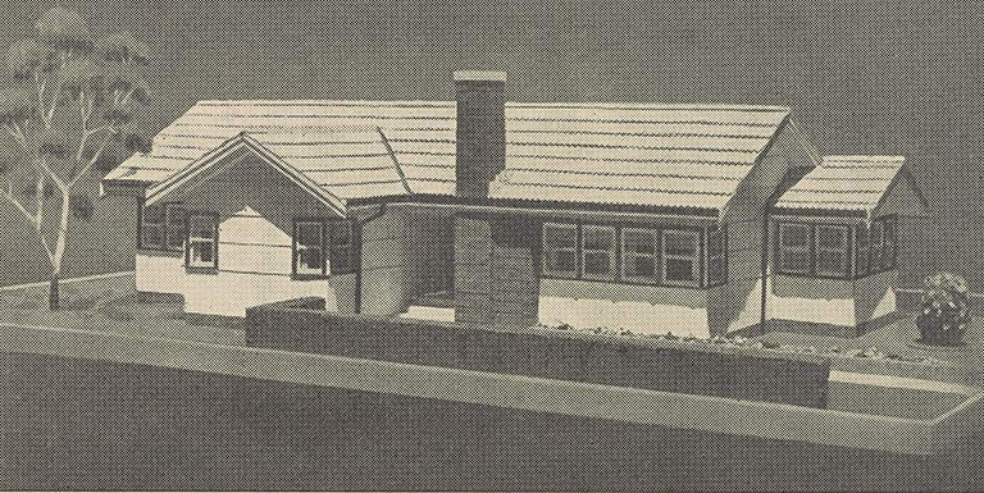
AREA :

1,100 sq. ft. plus 131 sq. ft.
for sun room, and 70 sq. ft.
for front porch.

Sun room may be omitted,
if desired, making overall
width of cottage 44 ft.

*Insist on
HARDIE'S GENUINE
"FIBROLITE"*

"FIBROLITE" is Durable and Permanent. Unaffected by dampness,
resistant to weather and sea-air . . . proof against white ants and borers.



"FIBROLITE" HOME DESIGN No. 303

AREA :

1,278 sq. ft. plus 105 sq. ft.
verandah space.

If you favour this design,
submit it to your architect
and he will prepare com-
plete plans and specifica-
tions for you.

"FIBROLITE" brings modern, attractive and durable homes within the reach of all. Ensures low initial cost, low maintenance, and low insurance premiums.

"Fibrolite Homes"

★ ARE APPROVED BY.

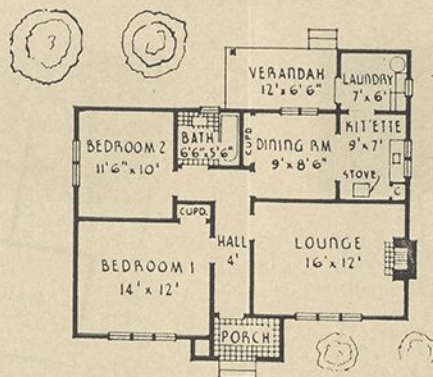
Reasons for the growing popularity of "Fibrolite" Homes are . . . they are healthy and comfortable to live in; lack nothing from aesthetic viewpoints; assure maximum durability with minimum maintenance; and can be speedily built with a minimum of labour at a moderate cost.

"FIBROLITE" Homes are playing a major role in meeting to-day's housing needs.

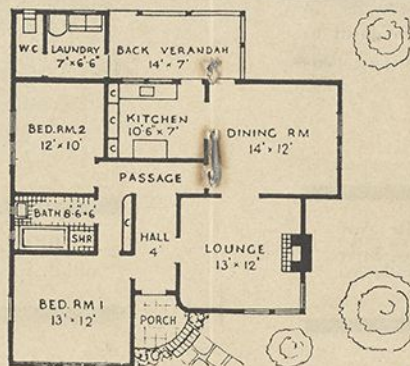
STATE HOUSING COMMISSION OF N.S.W.

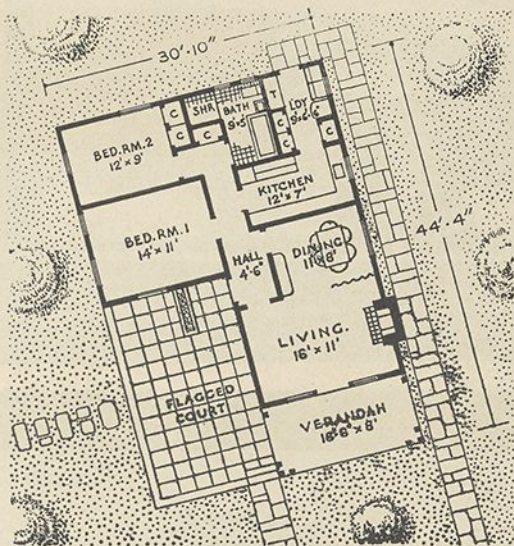
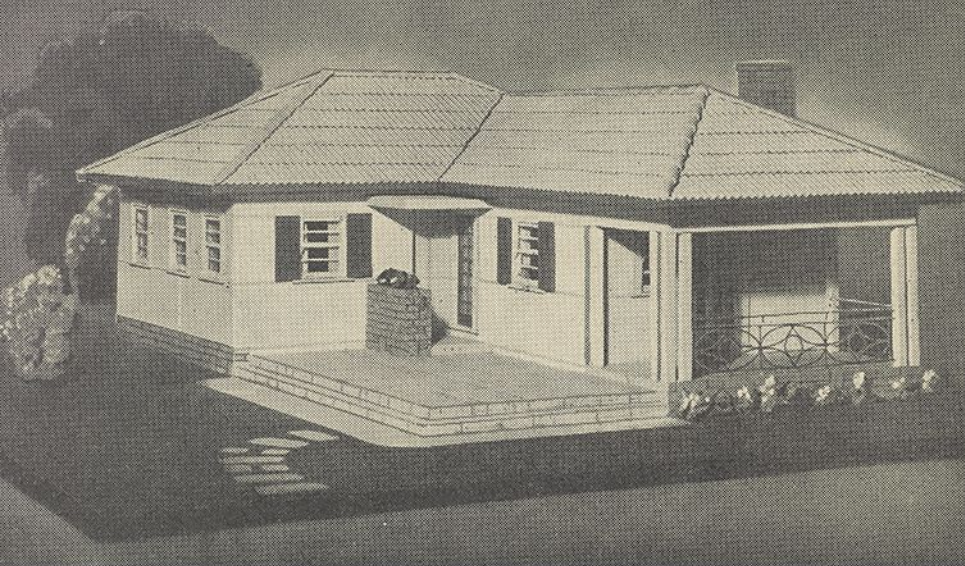


RURAL BANK OF N.S.W.



CO-OPERATIVE BUILDING SOCIETIES





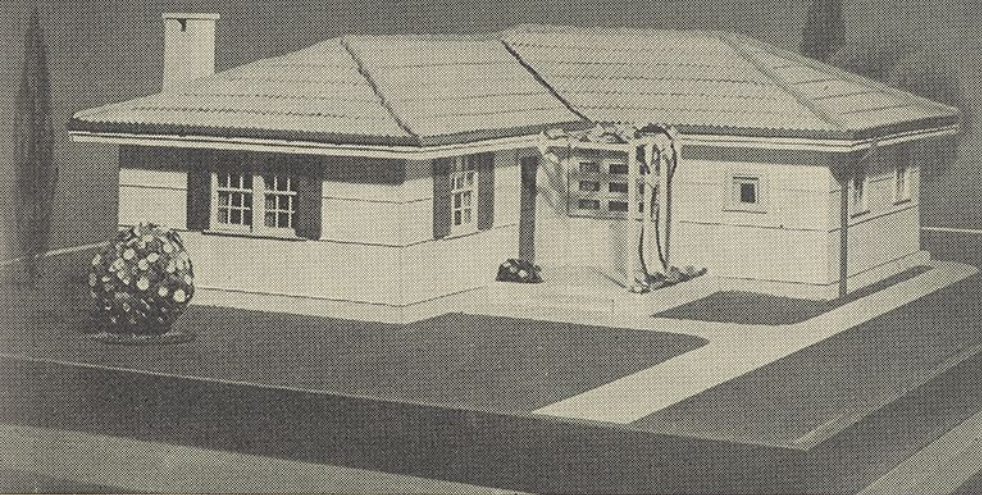
"FIBROLITE" HOME DESIGN No. 304

AREA :

906 sq. ft. plus 134 sq. ft.
verandah space.

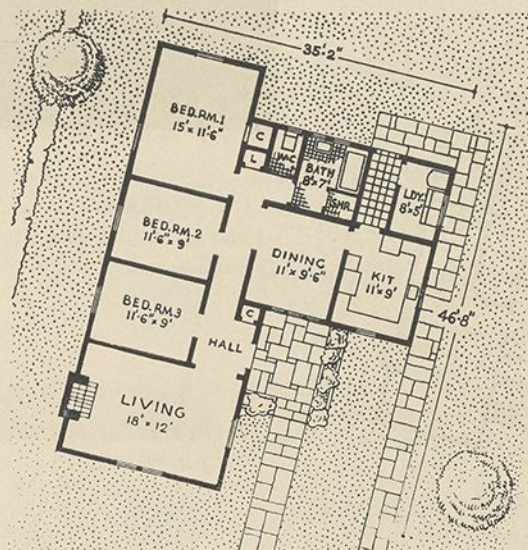
We do not build "Fibrolite" Homes. Any builder in your district will give you an estimate for a "Fibrolite" Home built to your plans and specification.

Think of the advantages "Fibrolite" offers you! Fire Retardant, White Ant Proof, Borer Proof, Impervious to Sea-air, Permanently Durable, Low First Cost and Low Upkeep.



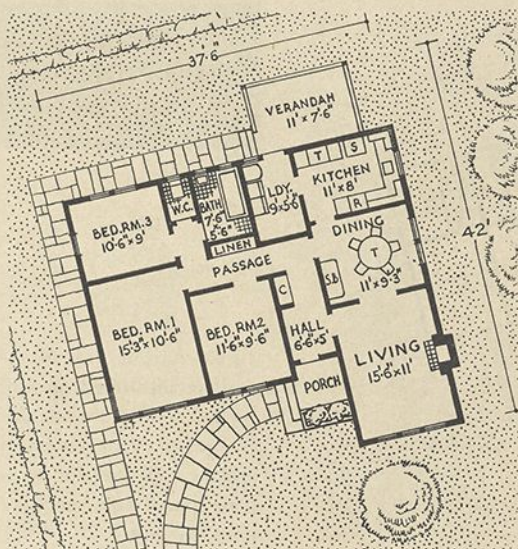
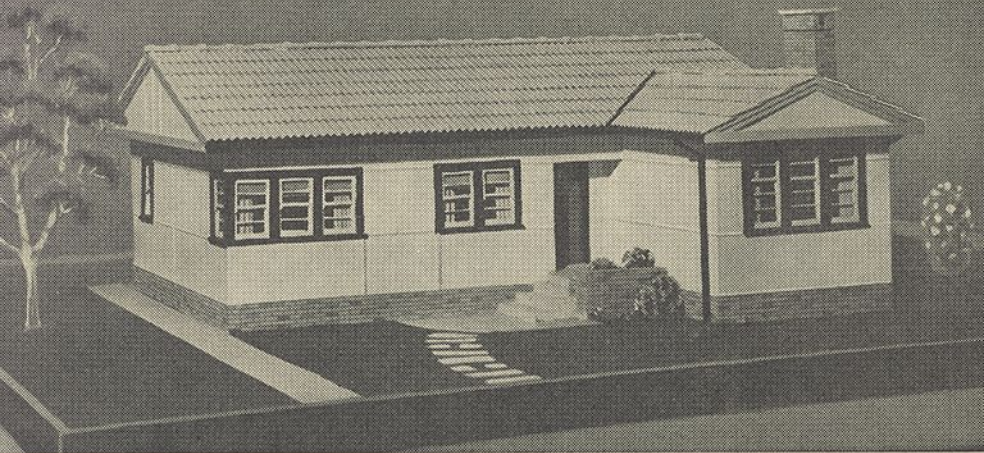
“FIBROLITE” HOME DESIGN No. 305

AREA:
1,175 sq. ft.



If you favour any of the designs illustrated in this booklet, submit the one you choose to your architect and he will prepare complete plans and specifications for you.

“FIBROLITE” is Fire Retardant. Minimise fire risks in your new home by using this durable building material for exterior and interior walls and ceilings.



**“FIBROLITE”
HOME DESIGN
No. 306**

AREA :
1,050 sq. ft. plus 96 sq. ft.
verandah space.

*Insist on
HARDIE'S GENUINE
“FIBROLITE”*

When you Build . . . specify and insist on HARDIE'S GENUINE “FIBROLITE” for exterior and interior walls and ceilings. Tried, Tested and Proved for over 28 years.

7 Advantages

OFFERED YOU BY

HARDIE'S "FIBROLITE"

1

LOW COST: "Fibrolite" brings modern, attractive and durable homes within the reach of all, *at moderate cost.*

2

SOUND ECONOMY: "Fibrolite" ensures Low Initial Cost, Low Maintenance, Low Insurance.

3

DURABLE: "Fibrolite" is inherently Durable and Permanent. Unaffected by weather and sea-air.

4

FIRE RETARDANT: Being a Fire Retardant building material, "Fibrolite" minimises fire risks.

5

QUICK, ECONOMICAL CONSTRUCTION: "Fibrolite" is easily and quickly erected, at a minimum cost for labour.

6

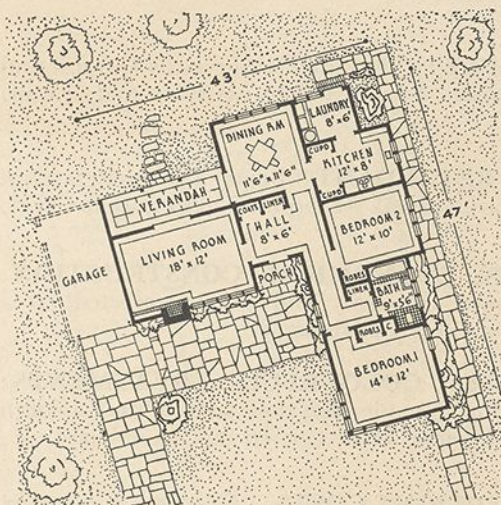
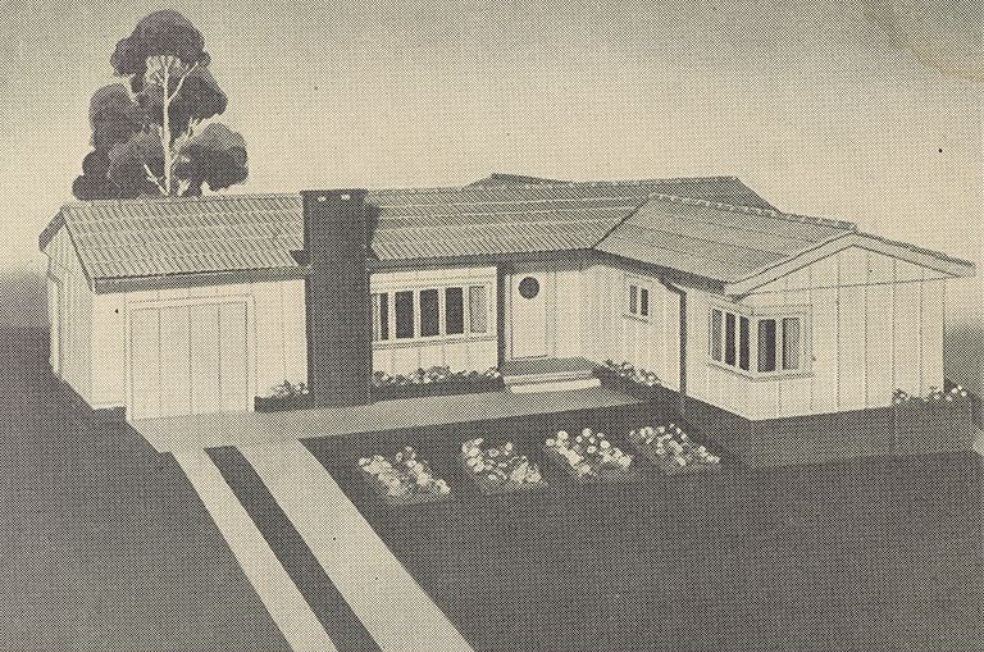
BRIGHT, COLOURFUL TREATMENTS: "Fibrolite" enables the most artistic and modern colour schemes to be carried out, at low cost.

7

LOW FREIGHT COSTS: "Fibrolite" is easy and economical to transport.

Specify

"FIBROLITE"
FOR YOUR NEW HOME



“FIBROLITE” HOME DESIGN No. 311

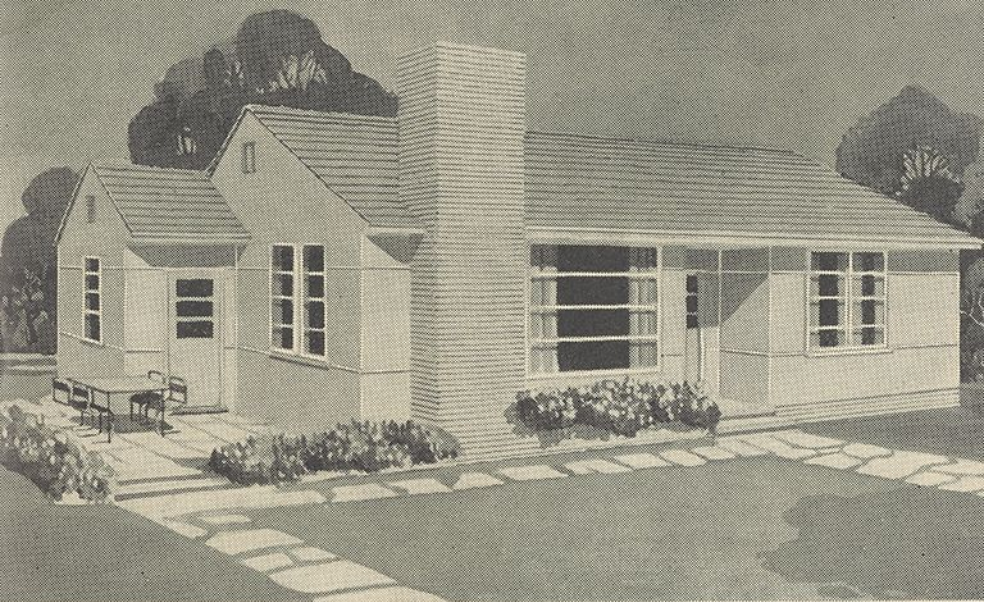
AREA :

1,120 sq. ft. plus 140 sq. ft.
for porch and verandah.

Garage 180 sq. ft.

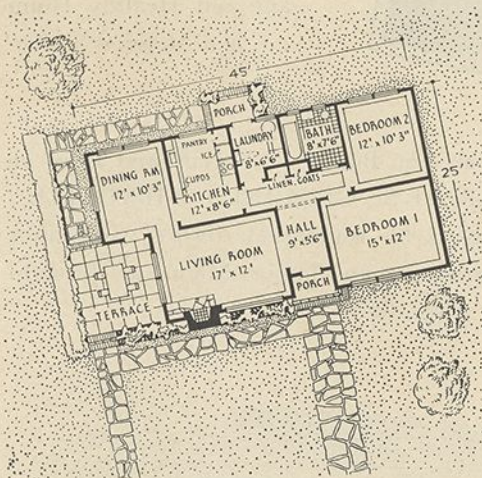
*“Fibrolite” Builds Better
Homes at Lower Cost.*

Use “FIBROLITE” Corrugated Sheets for roofing and “Fibrolite” Gutters and Downpipes for your new home. Rust Proof, Sea-air Proof, No Painting. The First Cost the Last Cost.



**"FIBROLITE"
HOME DESIGN
No. 309**

AREA:
1,045 sq. ft.



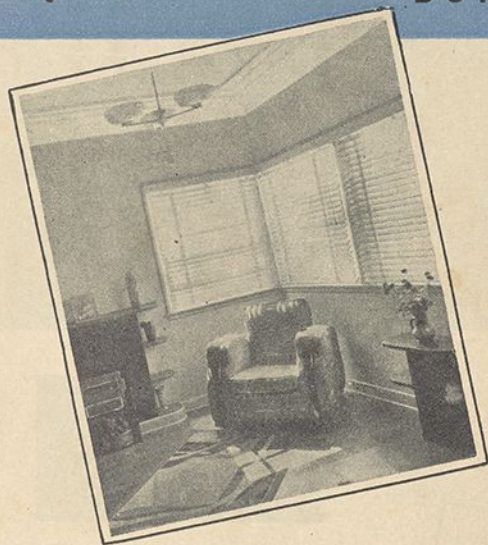
If you favour any of the designs illustrated in this booklet, submit the one you choose to your architect and he will prepare complete plans and specifications for you.

Viewed from all angles, the "FIBROLITE" Home is a Sound Investment . . . a never-ending source of satisfaction and pride to its owner.

BUILD YOUR NEW HOME OF

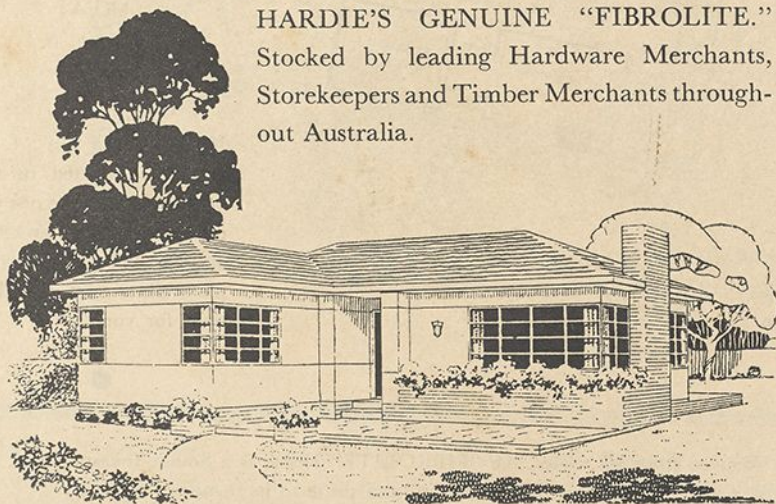
Hardie's "FIBROLITE"

BUILDING SHEETS



By planning to use this Economical and Durable Building Material for Exterior and Interior Walls and Ceilings, you will be assured of a Modern, Attractive, Fire Retardant and Healthy Home . . . at a Minimum of Cost!

When You Build . . . Specify and Insist on HARDIE'S GENUINE "FIBROLITE." Stocked by leading Hardware Merchants, Storekeepers and Timber Merchants throughout Australia.



BETTER HOMES AT LOWER COST!

Waite & Bull, Sydney