



---

## Modern homes

AUTHOR(S)

Cowell Bros

PUBLICATION DATE

01-01-1940

HANDLE

[10536/DRO/DU:30122251](#)

Downloaded from Deakin University's Figshare repository

Deakin University CRICOS Provider Code: 00113B

Modern  
HOMES

COWELL BROS. & COY. LIMITED





728-31099423  
Cow/mho

1206/002

SPC

**B**UILDING a new home is one of life's big adventures. To many of us it occurs only once in a lifetime—and as a consequence few have experience in design, or planning or building to guide them.

On the staff of Cowell Bros. are men whose careers have fitted them to advise you in these matters, and we gladly place their service, in this capacity, at your disposal without obligation.

In this folder we show you a few of the many suggestions for building the type of home you want. We do not assume that you can accept these ideas without adjusting them to your individual needs, and suggest that after studying them you forward a more precise outline of your requirements. We will gladly assist you to achieve your ideal home.

If you will tell us who is your Architect or local Builder we will co-operate with them.

Remember, always, that it is Cowell Bros.' business to assist you in the important task of building your new home.

COWELL BROS. & COY. LIMITED,

'Phone: J 1661

Santo Parade, Port Adelaide.

3327012679248

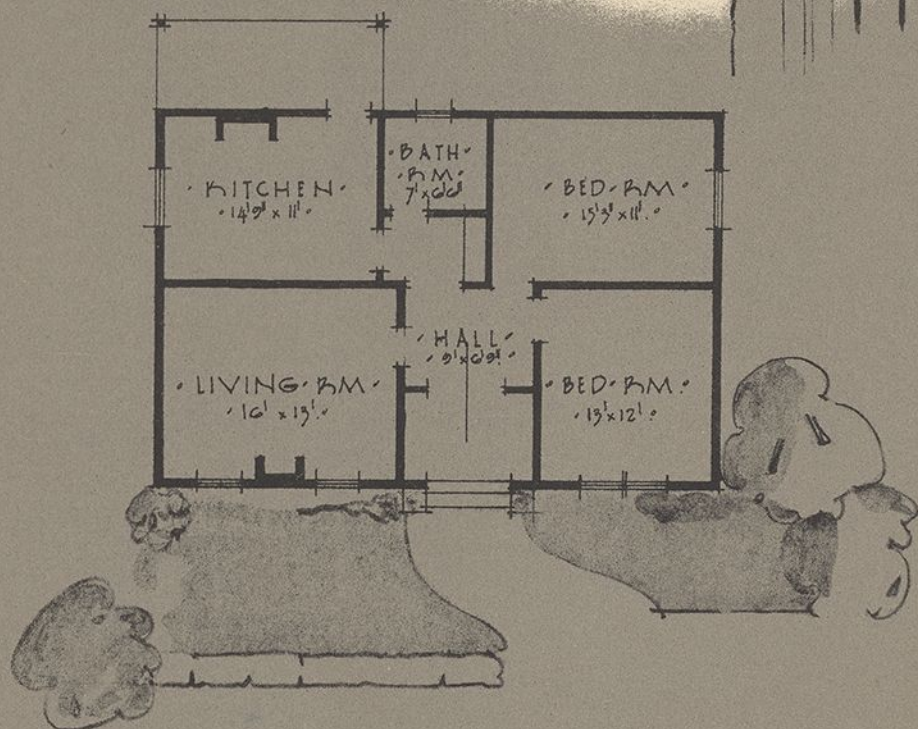
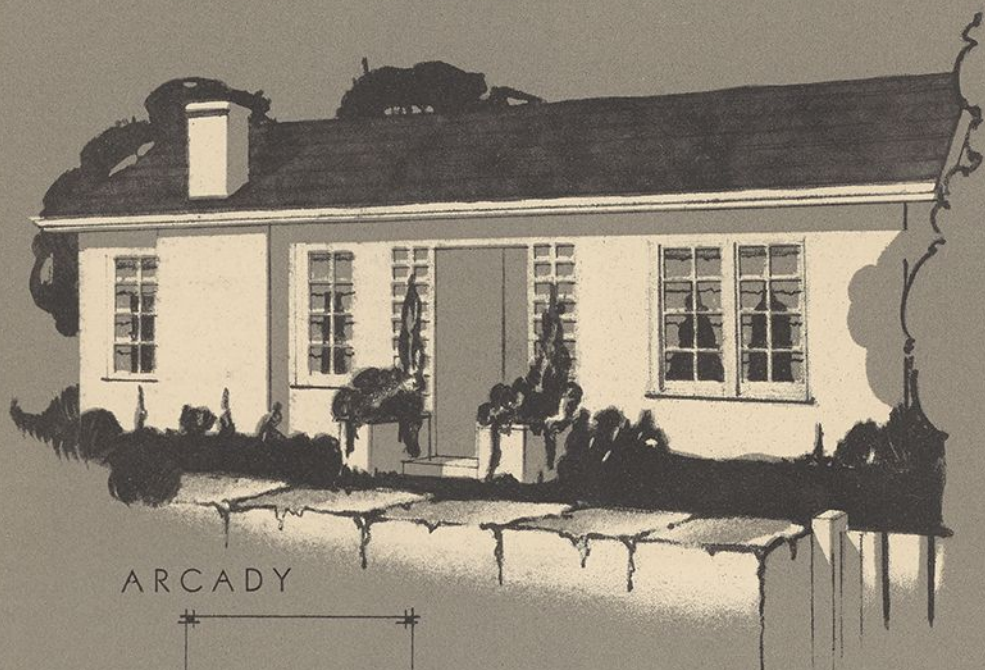


## ARCADY

WHEN a house faces south, verandahs are not only unnecessary, but they darken rooms which face in this direction. A southern wall gets very little sun in the year. This is a case of economising on the exterior and using the savings made to obtain larger rooms. Every room in this plan is of generous proportions.









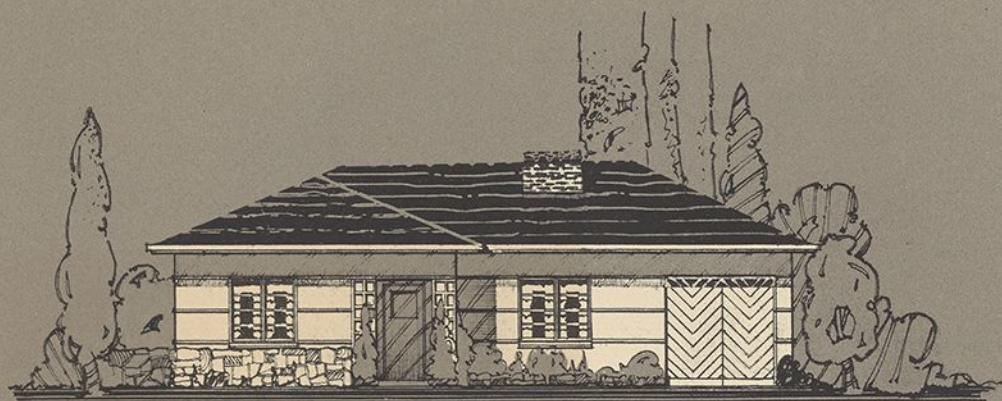


## BEVERLEY

A COMPLETE small house of four rooms and sleepout and a garage under the main roof. The herringbone boarding on the garage doors is a detail which adds a distinctive touch to the design. Notice how the laundry, bath and kitchen are grouped as a unit—it is in this part of the home where most household duties are performed and this grouping reduces such work to the minimum. Following the modern trend, wide overhanging roof eaves replace the usual verandah. This gives ample protection against noonday sun.







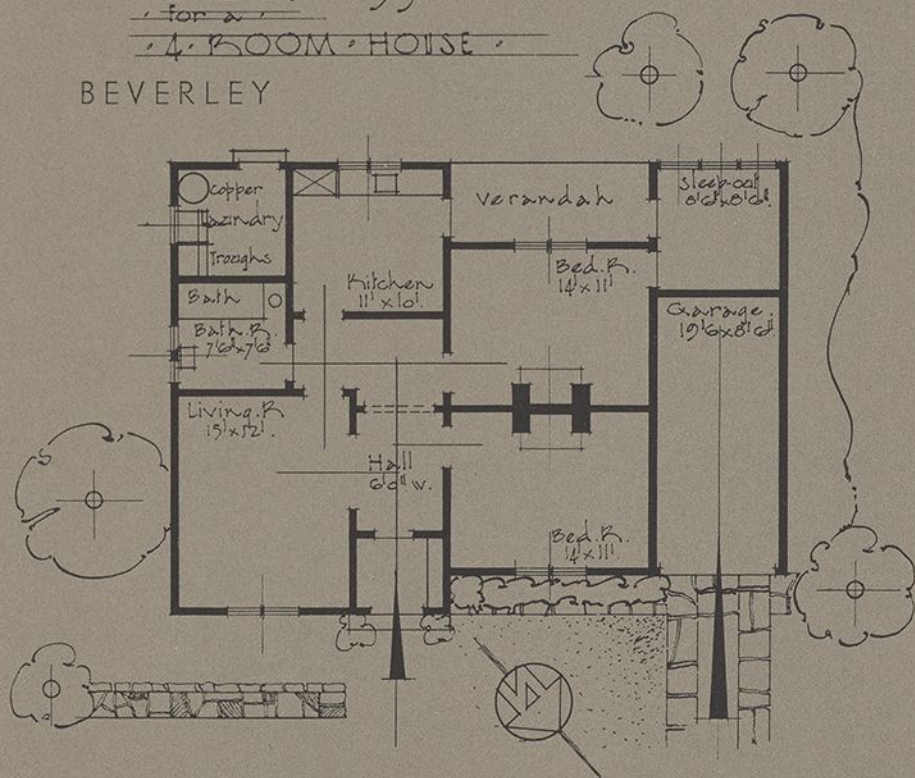
ELEVATION

DESIGN 53

for a

4 ROOM HOUSE

BEVERLEY





# COLONIAN

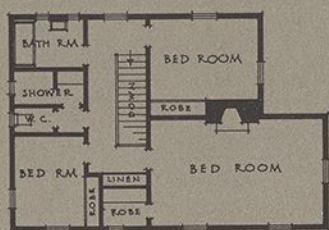
YOU can build more house for your money in modern timber frame construction than in any other method of building—and this also means a better home—better in appearance, living qualities and durability. Wall failures do not occur in this form of construction—there are no expensive repairs to make as in the case when brick walls fail. The house illustrated was planned by a well-known Adelaide architect for erection in one of Adelaide's best suburbs—and the construction was entirely in wood. Obviously people who can afford this type of house do not accept wood because of its cheaper erection, but because it out-performs any other method of building.



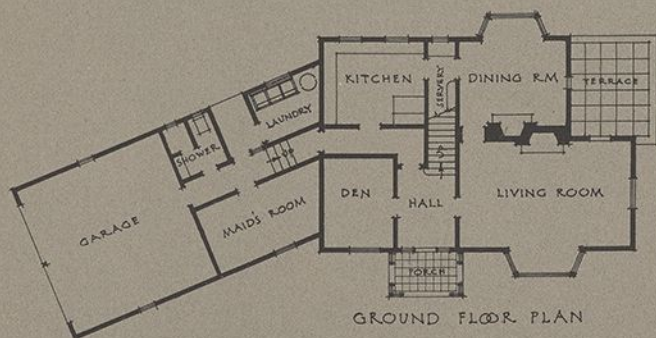




COLONIAN



FIRST FLOOR PLAN



GROUND FLOOR PLAN

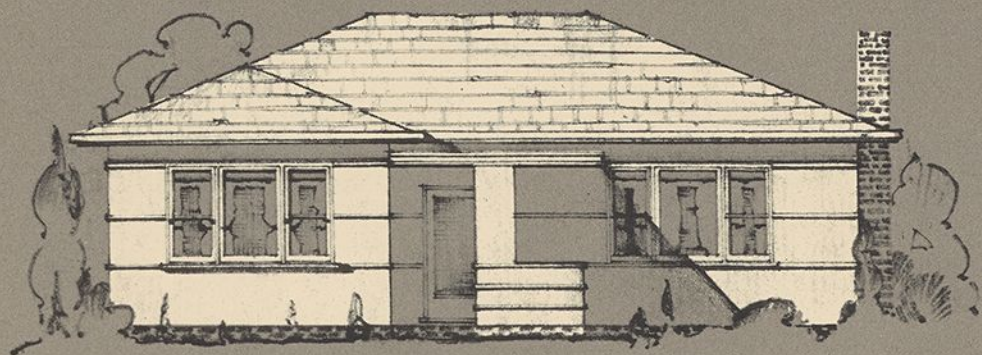




# GAMBIER

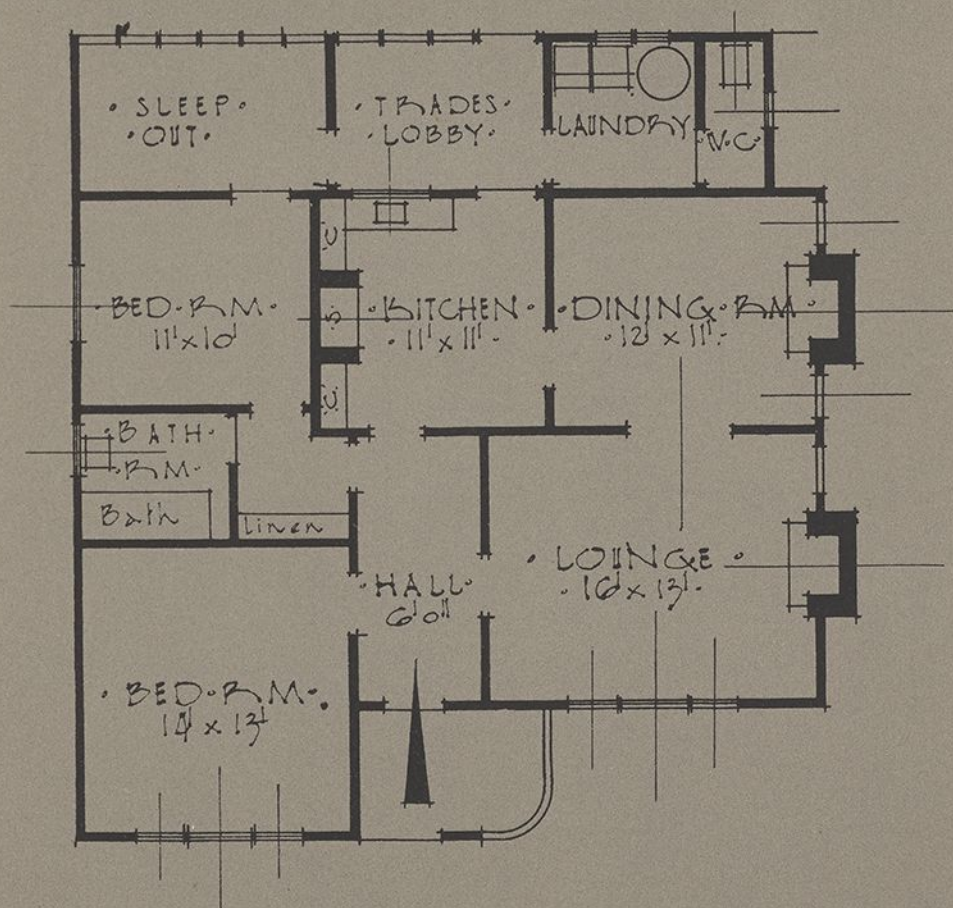
HERE is a five room plan showing two bedrooms. By using the lounge as the main bedroom a third can be obtained. In this case the dining room would serve as a living room. The flexibility of such a plan is appreciated when emergencies make sudden demands for extra accommodation. Triple windows to both front rooms provide ample light and ventilation.





• DESIGN • N° 55 •

GAMBIER





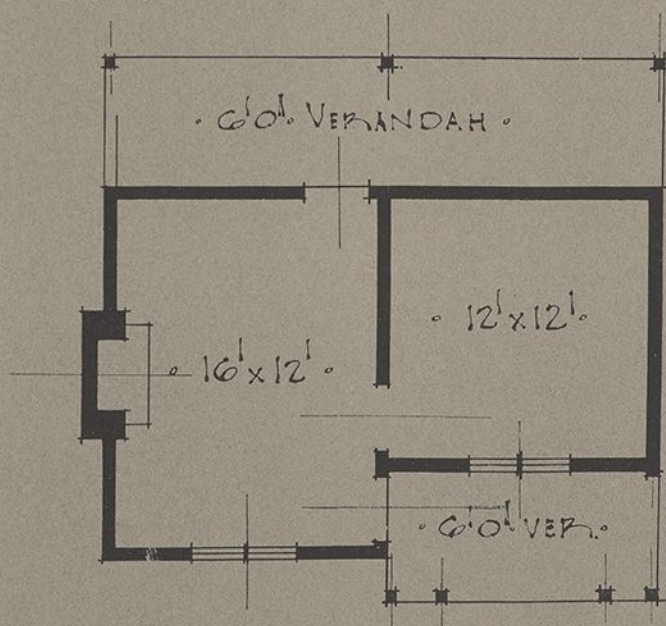


# HOYLETON

A USEFUL type for a hills cottage or the "first" home on a settler's block. As occasion demands additional rooms can be added, for which Cowell Bros. Ltd. will be pleased to submit plans. If additions are contemplated we recommend placing the cottage on the block so that the outside walls of the 12 x 12 room can become the frontage; this would enable the verandah space to be ultimately used as an entrance hall.









# LINWOOD

THIS four-roomed house, planned with two bedrooms and designed in the modern manner, demonstrates how the average small home can be given an architectural quality without increasing costs. There is no wastage in material in the design or in space in the plan, resulting in a high degree of economy, comforts and style not usually found in the small home.

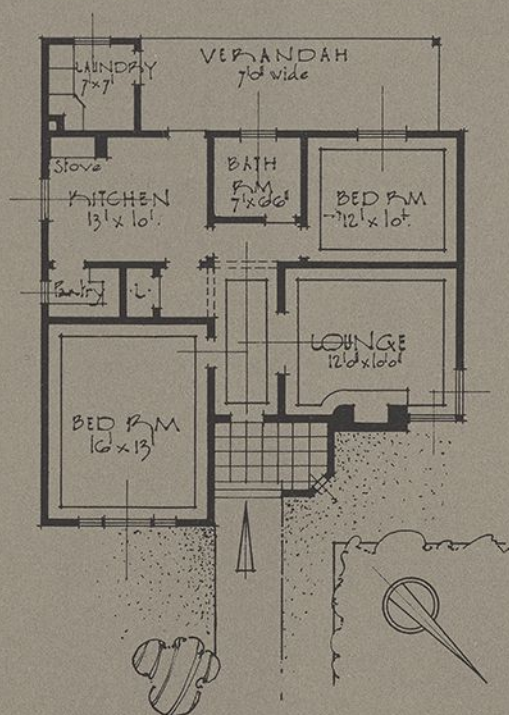






• DESIGN 52 •

# LINWOOD



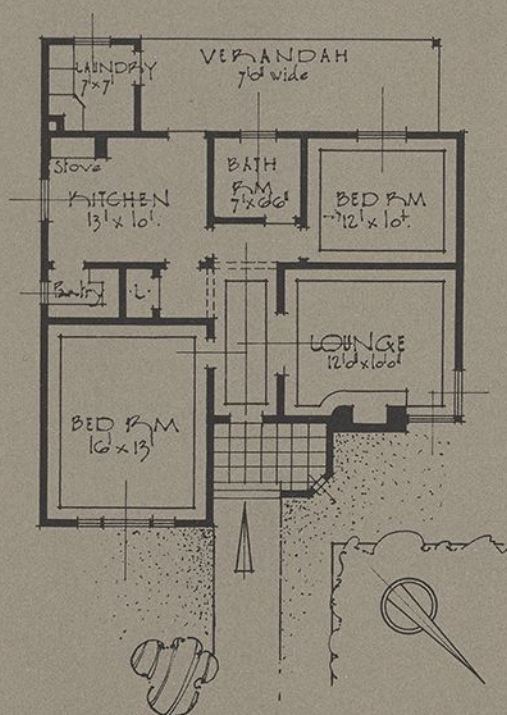






• DESIGN • 52 •

# LINWOOD





# LOWELL

JUST because a small home is required does not mean that it cannot have as much charm and dignity as a larger dwelling. In this instance the excellent proportions of the design give architectural qualities in advance of the usual small cottage. Note how a combination of horizontal and vertical weatherboards give a distinctive touch to a design which owes its merit to its charming simplicity.



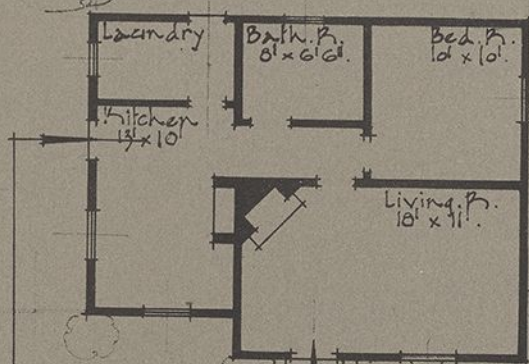
$$\begin{array}{r} 12 \times 11 \\ 12 \times 10 \\ \hline \end{array}$$

$$\begin{array}{r} 132 \\ 120 \\ \hline 252 \end{array}$$

$$\begin{array}{r} 183 \overline{) 3232} \\ \underline{183} \phantom{2} \\ 1402 \\ \underline{108} \phantom{2} \\ 322 \\ \underline{183} \phantom{2} \\ 1392 \\ \underline{108} \phantom{2} \\ 312 \\ \underline{183} \phantom{2} \\ 1292 \\ \underline{108} \phantom{2} \\ 212 \\ \underline{183} \phantom{2} \\ 29 \end{array}$$



LOWELL



• DESIGN •  
• FOR • A •  
• 3 • ROOM •  
• HOUSE •





# SANTA BARBARA

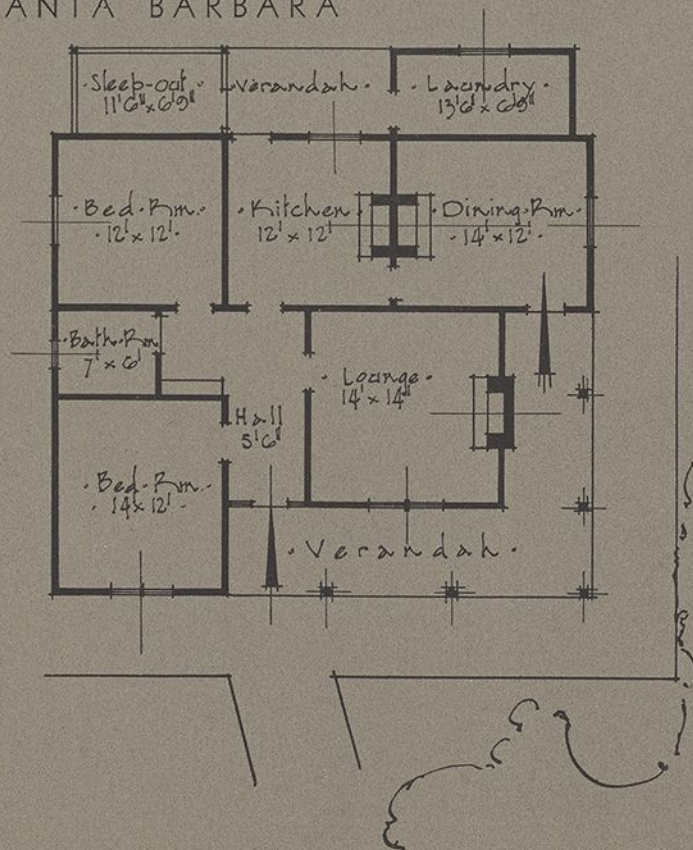
| F this house were built in brick, costs of building the broken wall lines would be excessive. In modern timber frame construction it is possible to take more liberties in design without unduly increasing costs. This design owes its character to irregularities in roof design which enhances the general scheme. Each angle the house is viewed from presents a different appearance; there is never any monotony in such a plan.





• DESIGN • N° 56 •

SANTA BARBARA





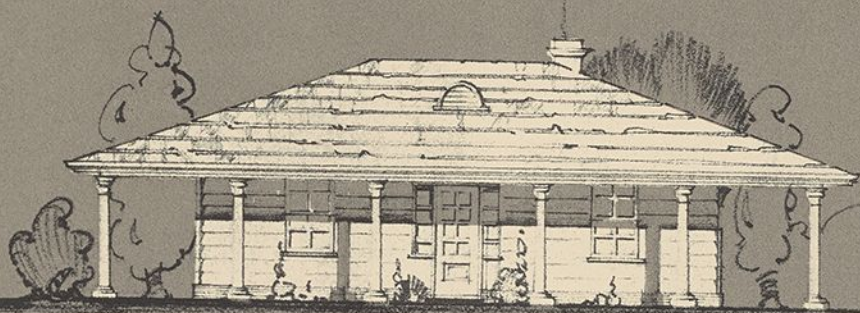


# SUNNYSIDE

THE "verandah all around" type is still popular in some districts. An advantage of this type is that verandahs can be used for sleeping-out quarters and for a bathroom, etc. The whole house is under the main roof. The plan provides for two bedrooms, a kitchen of larger than usual proportions which will probably be used for dining purposes, and a cosy sitting room. Note how good proportions in roof design lift this typical country dwelling out of the general run of its class.

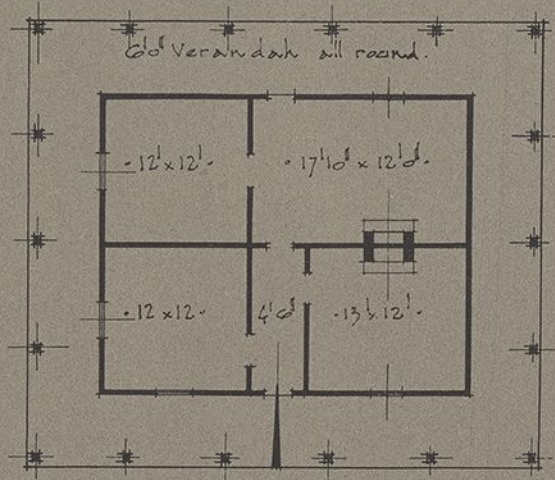






DESIGN N° 50  
SUNNYSIDE

Note Bath Rm. &c. can be built under Verandah.



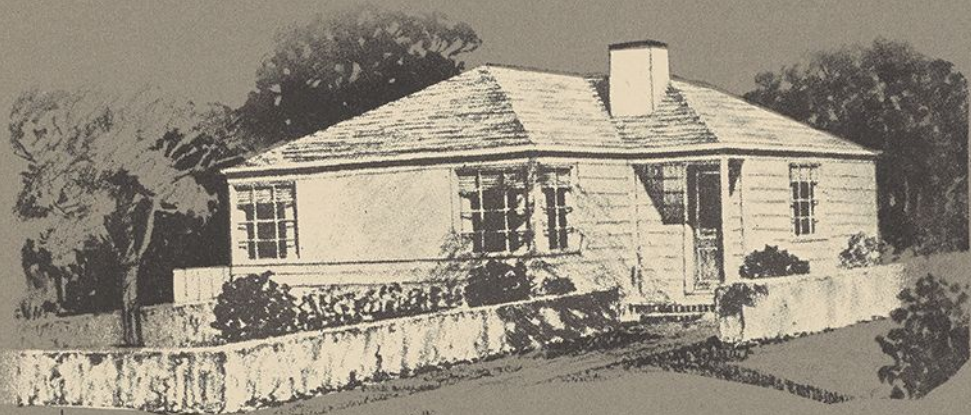


# TALBOT

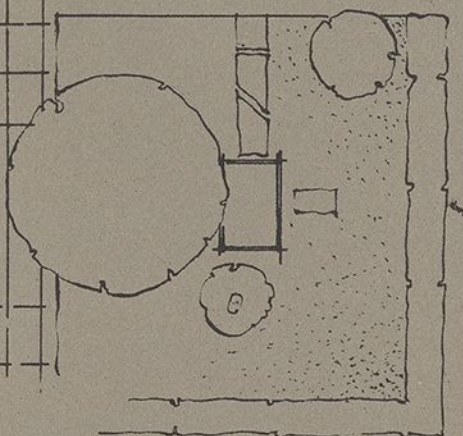
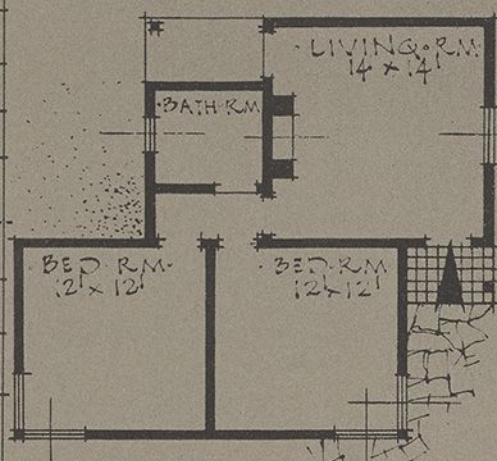
EVERY available foot of space is here used to advantage. Two bedrooms each 12 x 12 and a living room 14 x 14 gives accommodation to the small family. The weatherboard walls are relieved by a central panel of asbestos cement sheeting—an instance of how these two materials can be used to achieve a variation in design. The plan shows how the garden can become part of the general scheme—a factor which is often overlooked in small house planning.







TALBOT



DESIGN  
FOR A  
3 ROOM  
HOUSE

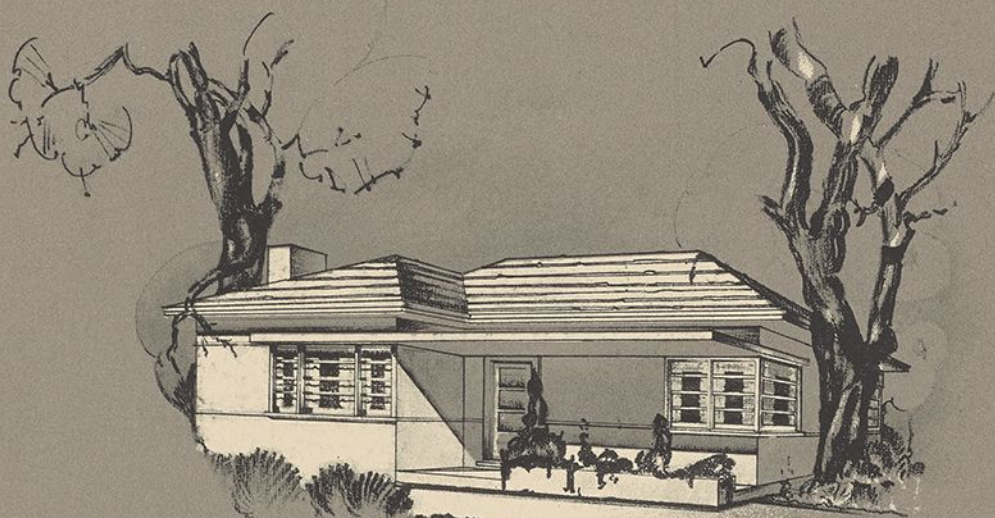




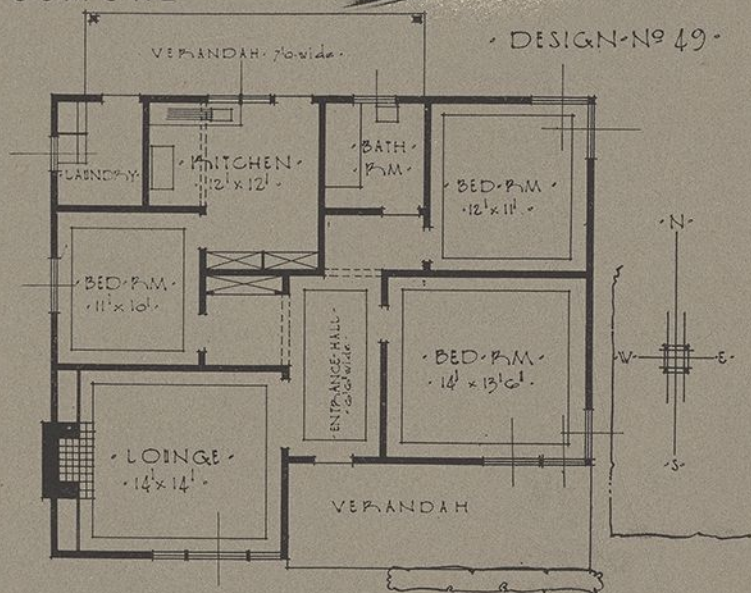
# TUSMORE

HERE is an excellent example of the modern trend in house design. This type of architecture was developed overseas and is finding favour in South Australia. The type relies upon correct line and proportion for its architectural qualities, as well as an expanse of unbroken wall space. Either asbestos cement sheets or the new weather-proof plywood can be used externally. The plan is complete in every detail, all rooms and services being under the main roof. This type is economical to build and maintenance costs are low.





TUSMORE





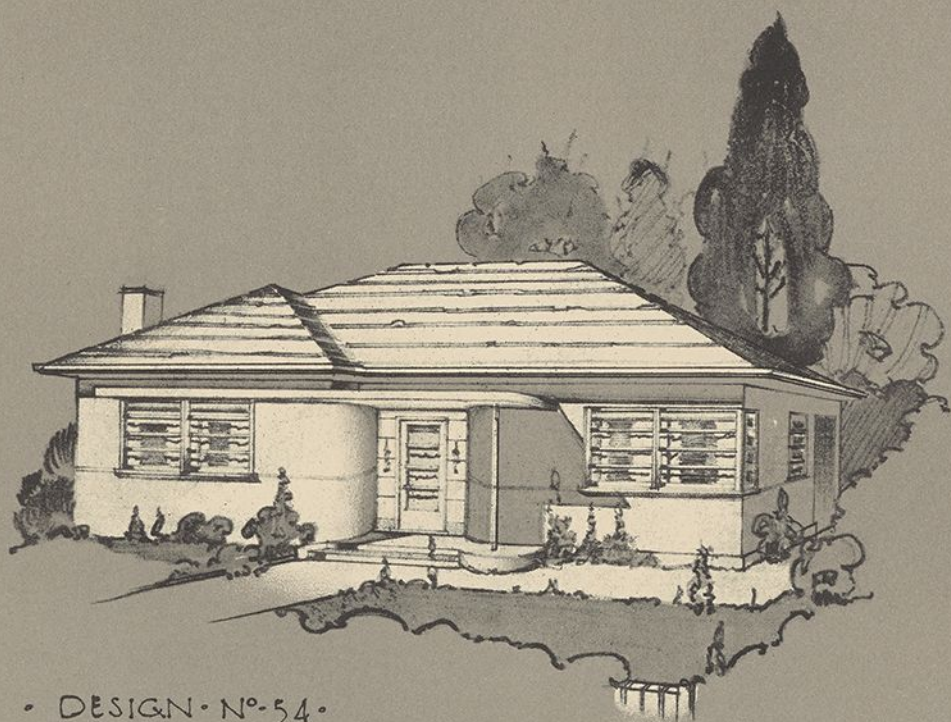


# VALENCIA

THIS is a house that would grace any street, even in the better suburban areas. Modern in type, it uses the new curved sheets of asbestos-cement which are now being made in South Australia. Three bedrooms are provided, to accommodate a mixed family. In addition to using wide overhanging eaves to protect the walls, a flat roof verandah on the cantilever principle gives adequate covering to the porch and dispenses with verandah posts.







# VALENCIA

