



Wunderlich letters & nameplates of cast or built metal : also of cast bronze with colourful vitreous enamel infils

AUTHOR(S)

Wunderlich Limited

PUBLICATION DATE

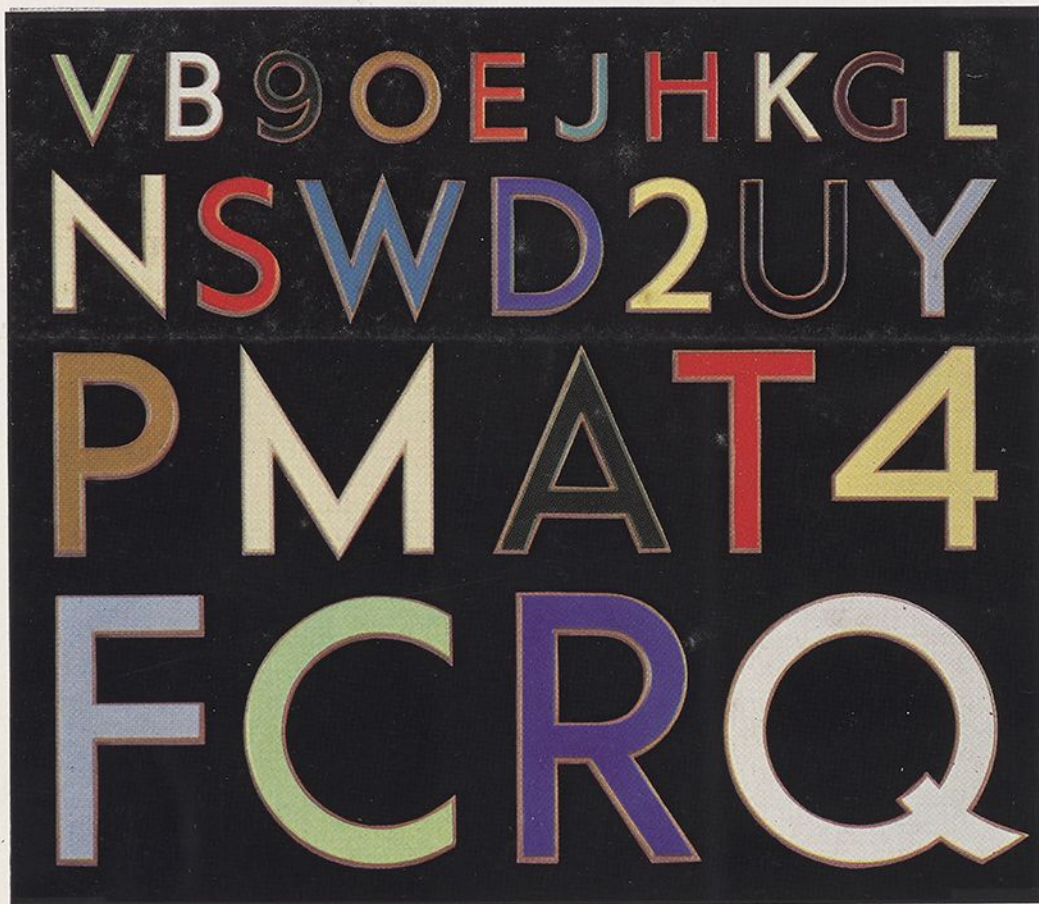
01-01-1939

HANDLE

[10536/DRO/DU:30122278](#)

Downloaded from Deakin University's Figshare repository

Deakin University CRICOS Provider Code: 00113B



VITREOUS ENAMELLED CAST BRONZE LETTERS AND NUMERALS MODERN BLOCK TYPE
STANDARD SIZES: 4", 6", 9" and 12" HIGH.

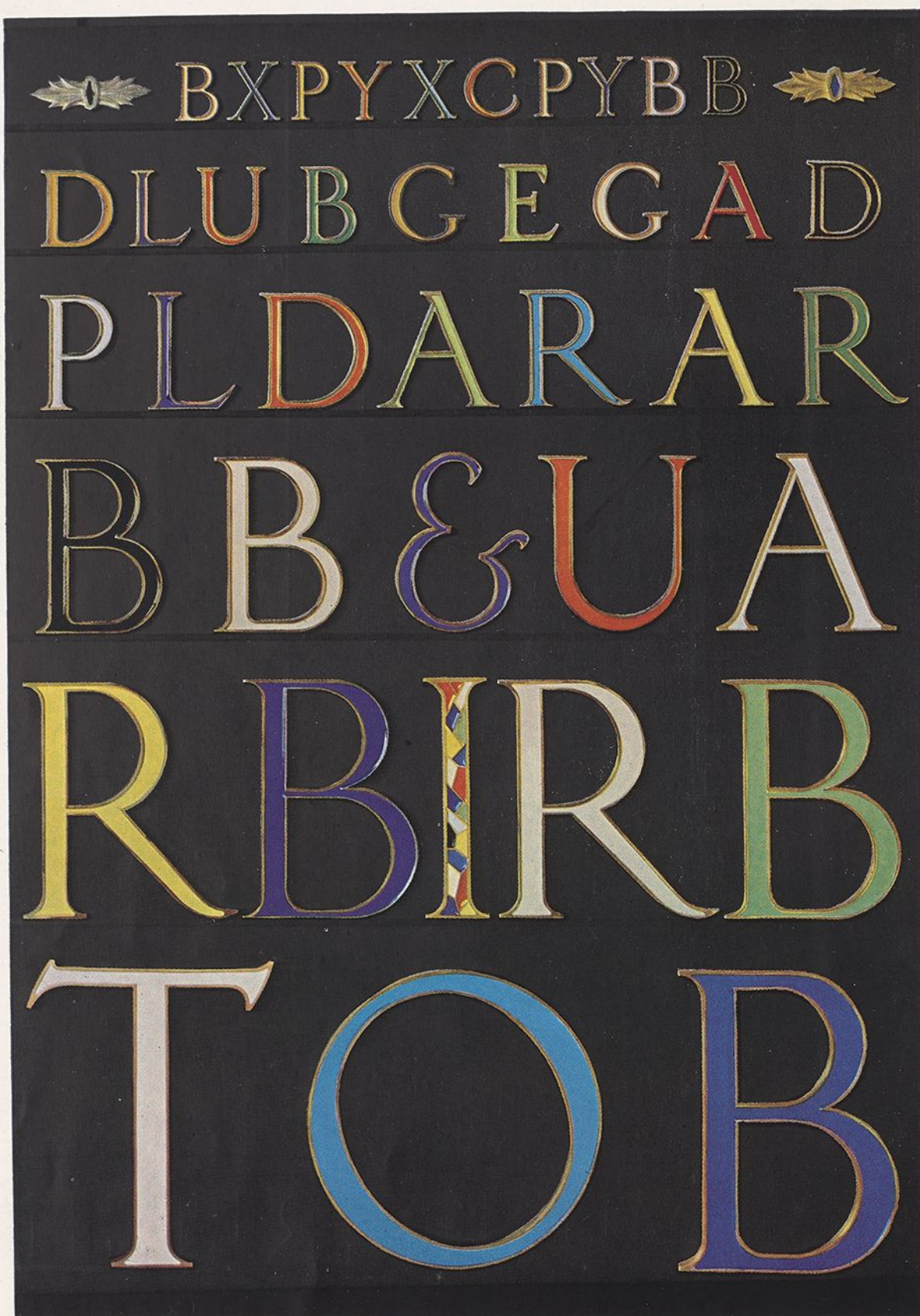
For Vitreous Enamels available, see colour sample plate on page three.

For Exclusive Display

WUNDERLICH

LETTERS & NAMEPLATES

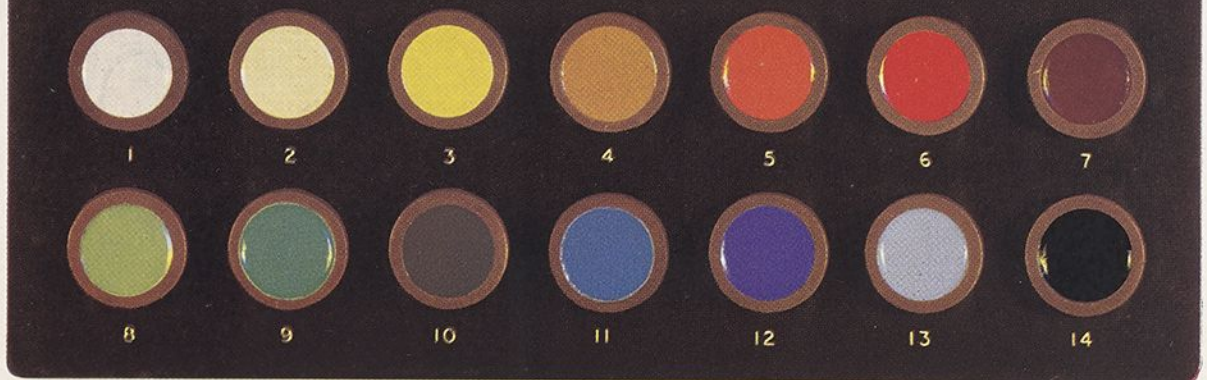
OF CAST OR BUILT METAL
ALSO OF CAST BRONZE WITH
COLOURFUL VITREOUS ENAMEL-INFILS



VITREOUS ENAMELLED CAST BRONZE LETTERS AND NUMERALS — RENAISSANCE
 TYPE: STANDARD SIZES: 2", 3", 4", 6", 7", 9", 10", 12", 15", 18" HIGH.
 FOR VITREOUS ENAMELS AVAILABLE SEE COLOUR SAMPLE PLATE ON OPPOSITE PAGE

WUNDERLICH CAST, VITREOUS ENAMELLED

WUNDERLICH VITREOUS ENAMEL COLOURS



The above illustration depicts in true colours the Vitreous Enamels available. These Enamels can be ordered by Number or Colour, as follows:—

No. 1 Soft White	No. 2 Ivory	No. 3 Yellow	No. 4 Orange
No. 5 Light Red	No. 6 Dark Red	No. 7 Purple Brown	No. 8 Pea Green
No. 9 Malachite Green	No. 10 Chrome Green	No. 11 Turquoise Blue	No. 12 Cobalt Blue
No. 13 Dove Grey	No. 14 Ebony Black		

MAINTENANCE AND CARE OF VITREOUS ENAMELLED LETTERS AND NAMEPLATES

Letters and Nameplates should be cleaned periodically with a damp cloth or chamois to remove dust, and then rubbed over with floor wax or similar product to protect the finish. In some cases it may be necessary to clean with soap and water before applying the wax.

BUILT OR CAST METAL LETTERS

RENAISSANCE—STANDARD DESIGN:

CAST: In Zinc (as cast), in Aluminium (as cast, satin finished or polished), in Bronze (satin finished, oxidised, patina finish or chromium plated), Stainless Steel or Monel Metal, polished or satin finished.

STANDARD SIZES: 2", 3", 4", 6", 7", 9", 10", 12", 15", and 18" high.

BUILT: In Zinc or Brass (natural colour), in Copper (Natural colour, oxidised or Verte Patina finish), Stainless Steel or Monel Metal, polished or satin finished.

STANDARD SIZES: 5", 6", 7", 9", 12", 15", 18" and 24" high.

When ordering, specify "fixings" required, viz.: for Brick, Stone, etc.



RENAISSANCE TYPE
BUILT OR CAST

MODERN BLOCK—STANDARD DESIGN:

CAST: In Zinc (as cast), in Aluminium (as cast, satin finished, or polished), in Bronze (satin finished, oxidised, patina finish or chromium plated).

STANDARD SIZES: 4", 6", 9" and 12" high.

BUILT: In Zinc or Brass (natural colour), in Copper (Natural colour, oxidised or Verte Patina finish).

STANDARD SIZES: 5", 6", 7", 9", 12", 15", 18" and 24" high.

When ordering, specify "fixings" required, viz.: for Brick, Stone, etc.



MODERN BLOCK TYPE
BUILT OR CAST

AND BUILT METAL LETTERS OF DISTINCTION

chone | hats
downs

ARNELL

APPAREL
SHOP 40

Legumes

BEN'S MART

food shop

CHIAAT

GRAHAM

MILK BAR

METAL LETTERS of SPECIAL DESIGN

The typical examples of Modern Metal Letters (illustrated at left) are representative only of the large variety of types or designs that can be produced either CAST or BUILT from sheet metal. The latter type of Lettering is not restricted to any overall size (height or width) projection or width of faces, but is specially designed to meet individual requirements. The finish of the Letters varies with the metal chosen and the effect desired.

CAST LETTERS are available in BRONZE—polished, satin finished, oxidised, chromium plated, verte patina finished, vitreous enamelled in fadeless colours, or 'as cast'; ALUMINIUM ALLOY — polished, satin finished or 'as cast', and ZINC—'as cast'.

BUILT LETTERS are available in STAINLESS STEEL — Polished or satin finished — also polished Stainless Steel faces in combination with Zinc sides lacquered in colours; COPPER—polished, satin finished, oxidised, verte patina and natural finish; ZINC—natural colour or lacquered in colours; BRASS—polished, oxidised or natural finish; MONEL METAL — polished or satin finished. All metal letters are made with open backs unless otherwise requested.

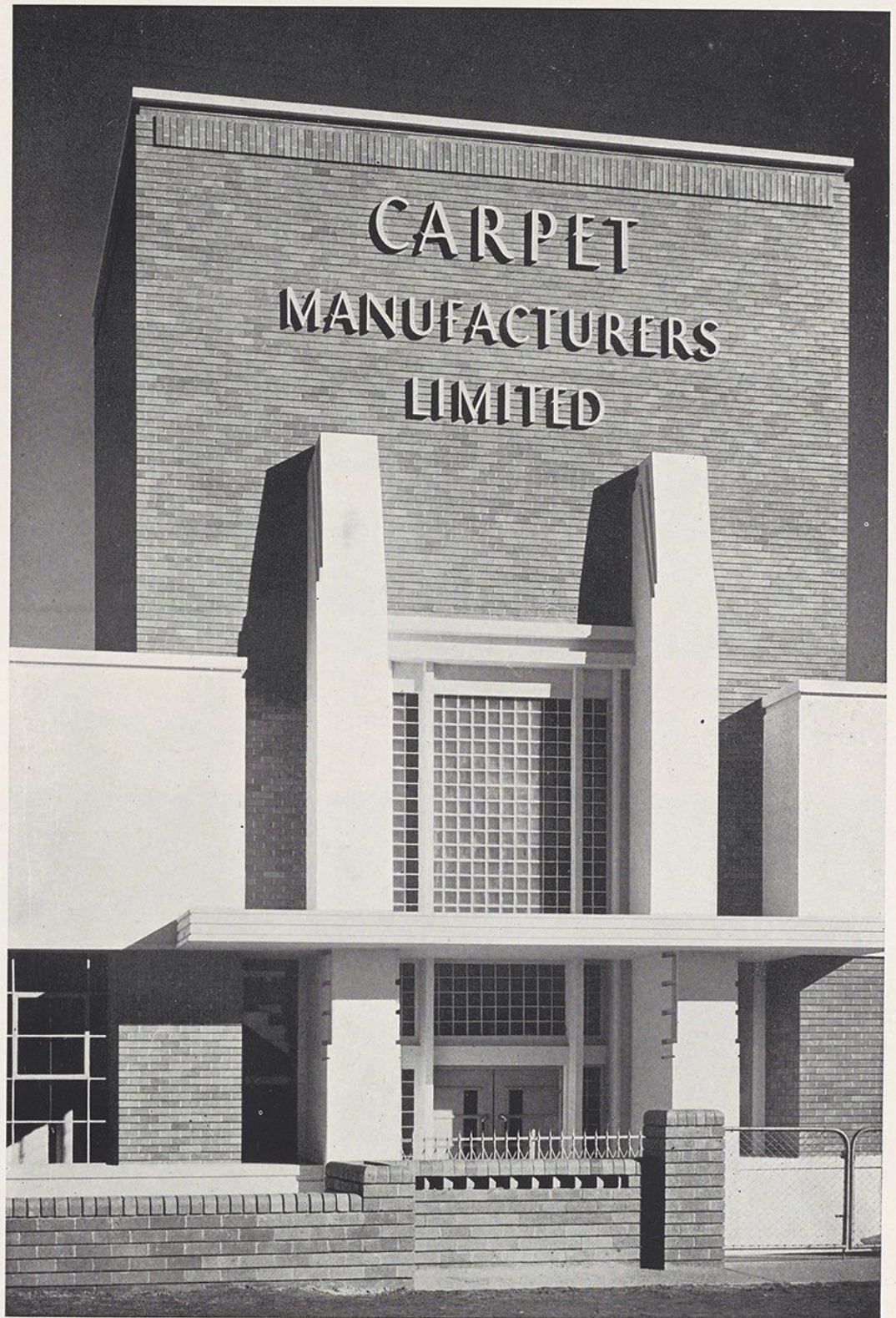
On receipt of particulars, designs of special metal letters to suit your requirements will be prepared and submitted free of cost, together with our quotation for the "supply exclusive of fixing", or "supplied and fixed", as may be desired.

It is necessary to advise the height from the ground at which the letters are to be fixed, together with dimensions of the space available. On the average, a Block or Renaissance Type Letter is as wide as it is high, so the space required for fixing in one line, lettering reading WINDSOR COURT, 12" high, after allowing for a space of one letter between the words and at each end, would be 15 lin. ft. approx.

As Metal Letters are supplied complete with the requisite fixings to suit the background to which they are to be attached, always specify the ground, viz.: Brick, Concrete, Stone, Steel, Timbers, etc.

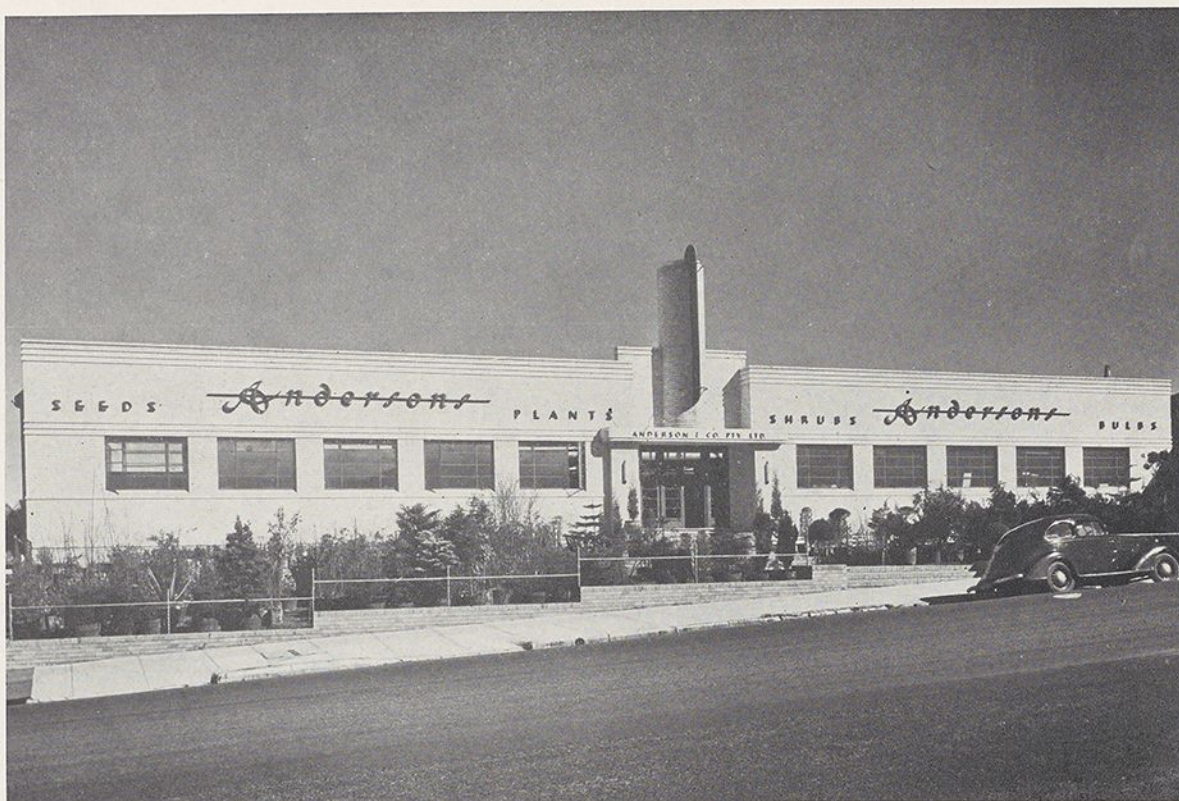
See the following pages for illustrations of special display Metal Letters as used on Sydney Buildings.

WUNDERLICH METAL LETTERS ARE EASILY



BUILT ZINC LETTERS, 24" AND 17" HIGH. FACES LACQUERED CREAM, SIDES BROWN
ARCHITECT: SAMUEL LIPSON BUILDERS: KELL & RIGBY

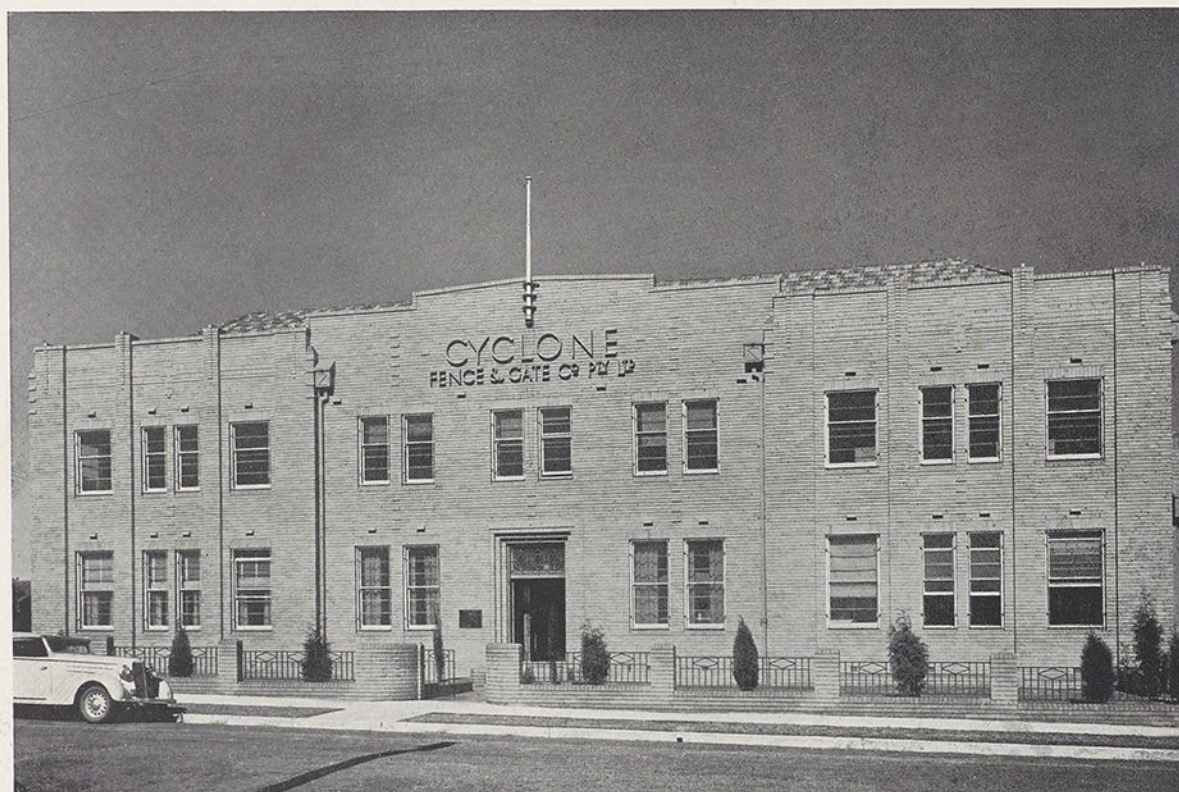
READ, ATTRACTIVE AND PERMANENT



BUILT ZINC LETTERS. FACES LACQUERED RED, SIDES GREEN

ARCHITECTS: BLOOMFIELD AND McCULLOCH

BUILDERS: HUTCHERSON BROS.



BUILT LETTERS 26" AND 14" HIGH. FACES POLISHED STAINLESS STEEL,
ZINC SIDES LACQUERED RED

ARCHITECT: M. V. E. WOODFORDE

BUILDERS: HUTCHERSON BROS.

DISTINGUISH YOUR BUILDING WITH



BUILT ZINC LETTERS. FACES AND SIDES LACQUERED PEA GREEN

ARCHITECTS: ROSS & ROWE

BUILDERS: STUART BROS. PTY. LTD.

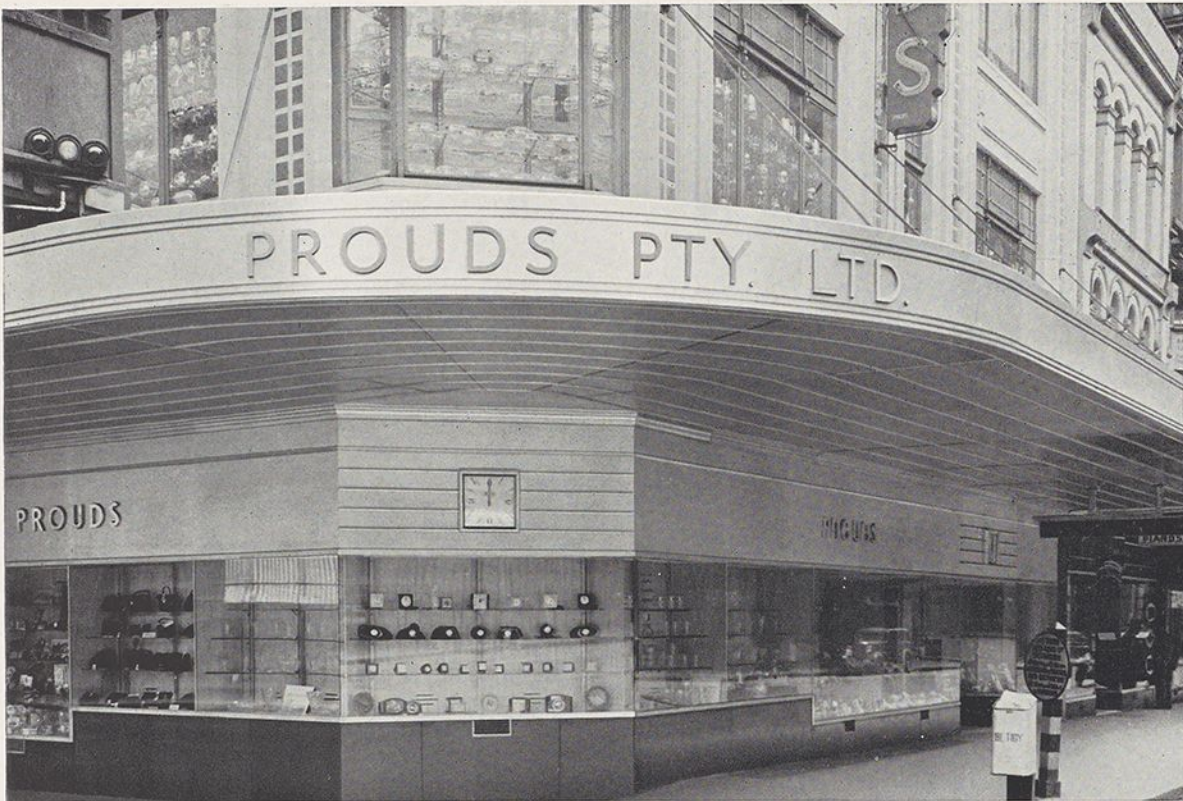


BUILT ZINC LETTERS, 27" HIGH. FACES LACQUERED RED AND SIDES BLACK

ARCHITECTS: REID AND PEARSON, MELBOURNE

BUILDERS: HUTCHERSON BROS.

WUNDERLICH METAL LETTERS

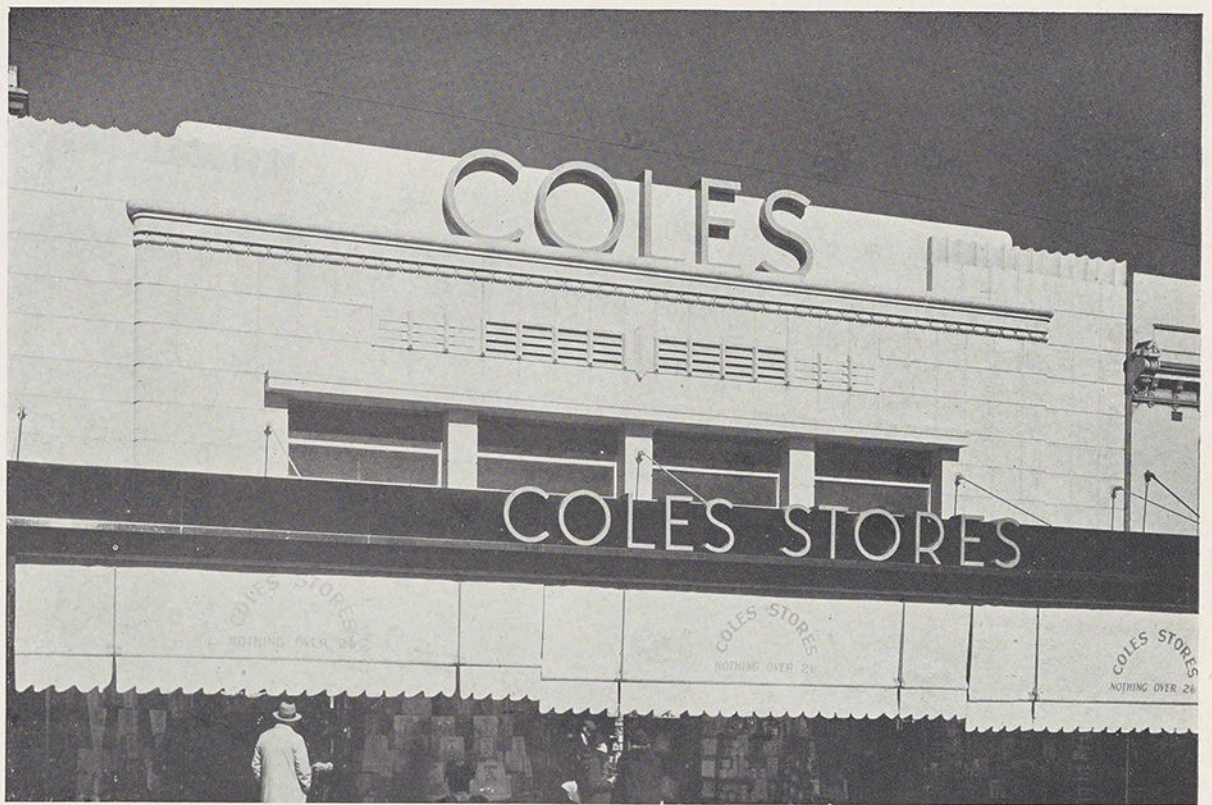


BUILT ZINC LETTERS, 10" HIGH. FACES AND SIDES LACQUERED PALE BLUE
 ARCHITECTS: ROBERTSON, MARKS & McCREDIE CONTRACTORS: BRAY AND HOLLIDAY
 PTY. LTD.



BUILT MONEL LETTERS, 18" AND 9" HIGH. FACES AND SIDES POLISHED FINISH
 ARCHITECT: H. W. BLACKET CONTRACTORS: ARMSTRONG BROS. PTY. LTD.

WUNDERLICH LETTERS ARE FABRICATED

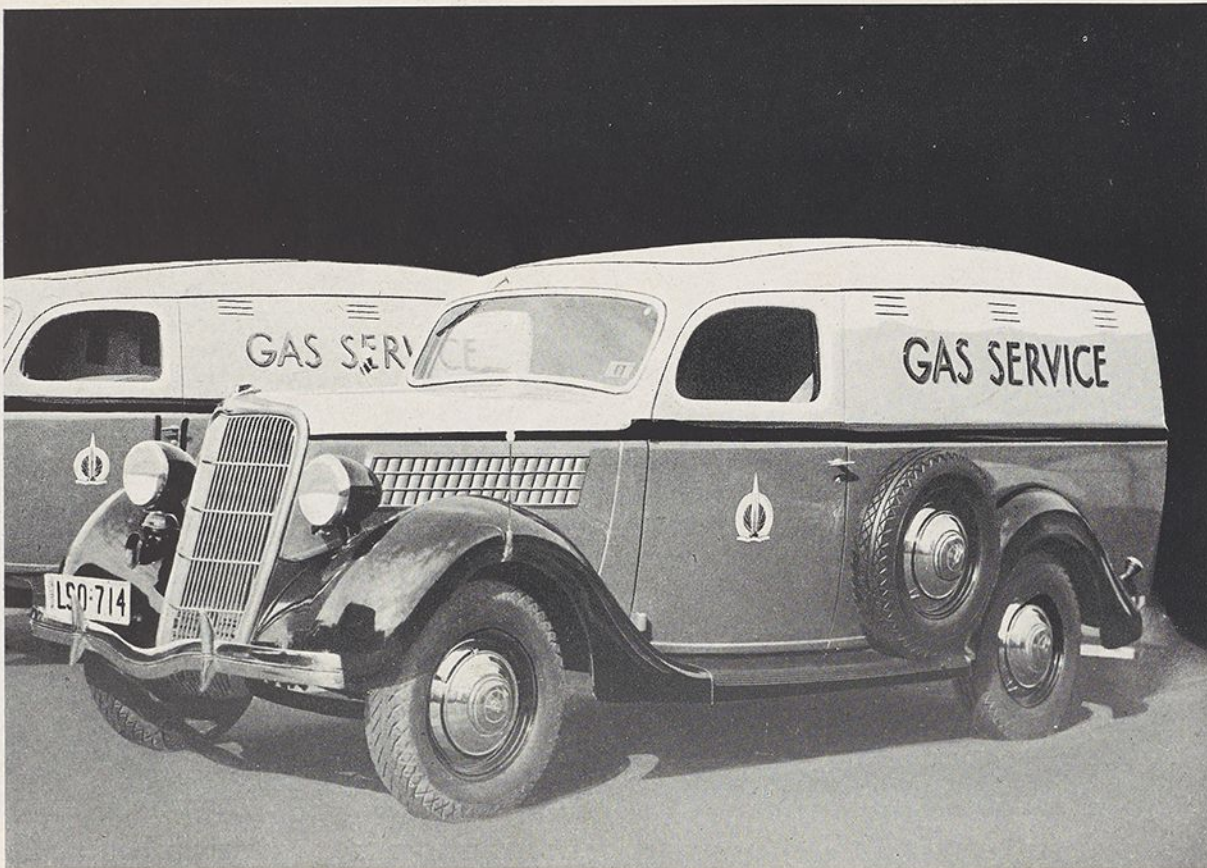


BUILT STEEL LETTERS, 48" AND 23" HIGH. FACES AND SIDES RED PORCELAIN ENAMELLED
 ARCHITECT: HARRY A. NORRIS BUILDERS: STUART AND CO. LTD.

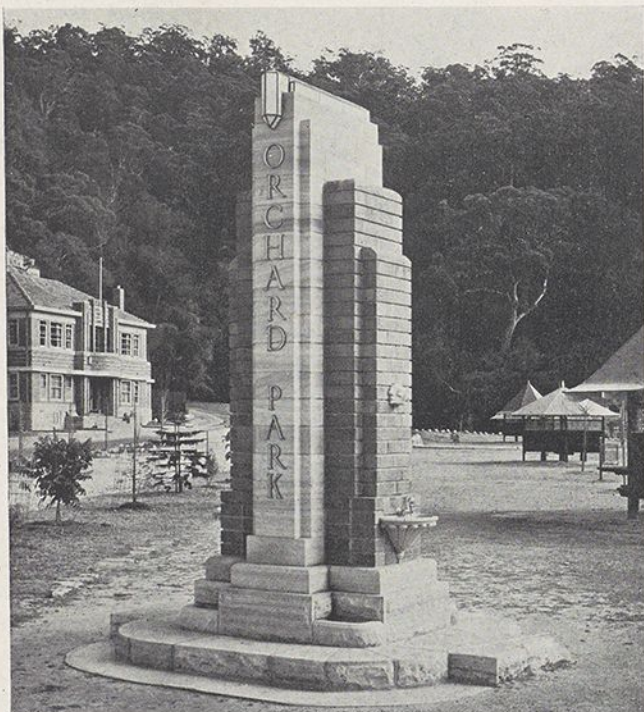


BUILT ZINC LETTERS, 33" HIGH. FACES AND SIDES PAINTED BUFF AND SANDED TO REPRESENT STONE
 ARCHITECT: SAMUEL LIPSON BUILDERS: HOWIE MOFFAT AND CO. PTY. LTD.

OF VARIOUS METALS TO ANY DESIGN

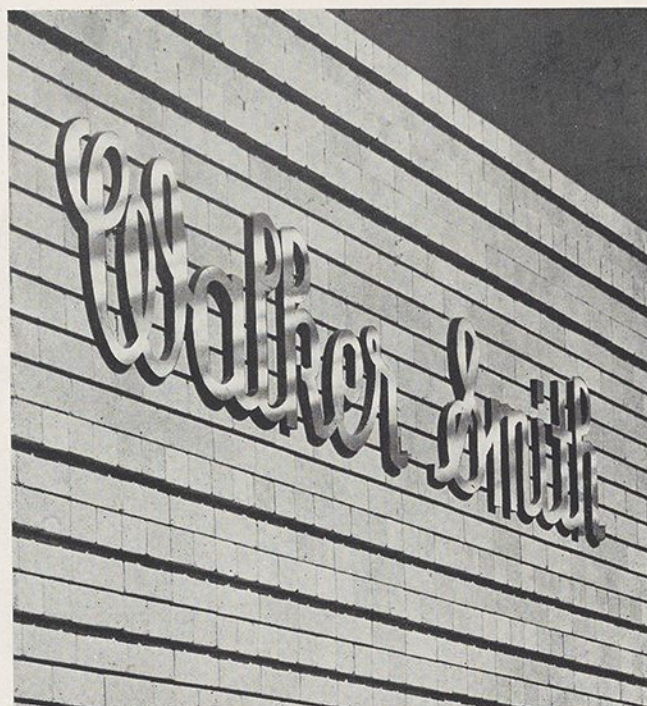


CAST BRONZE CHROMIUM PLATED LETTERS TO THE AUSTRALIAN GASLIGHT CO.'S SERVICE CARS.



CAST BRONZE, IVORY ENAMELLED LETTERS, BOBBIN HEAD, SYDNEY.

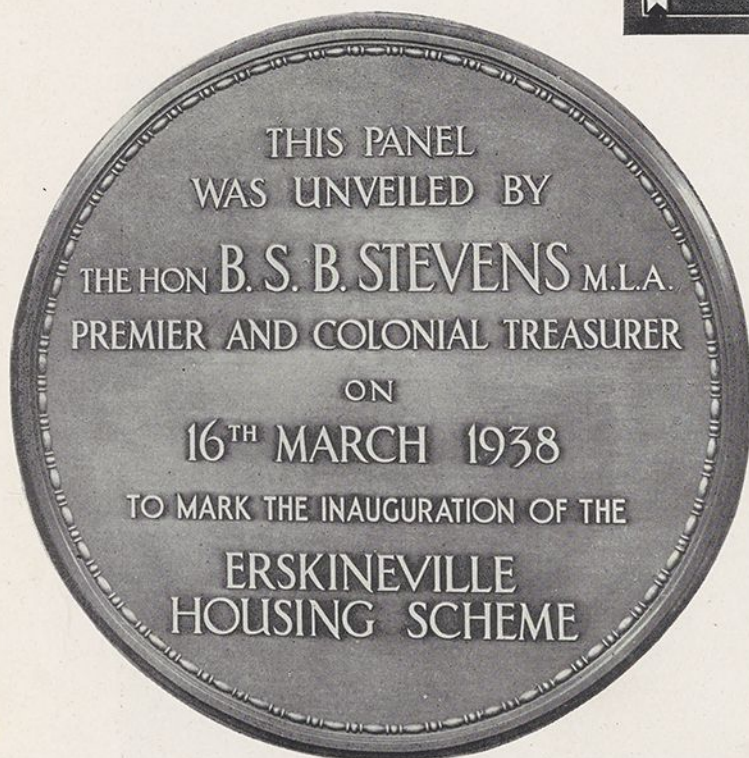
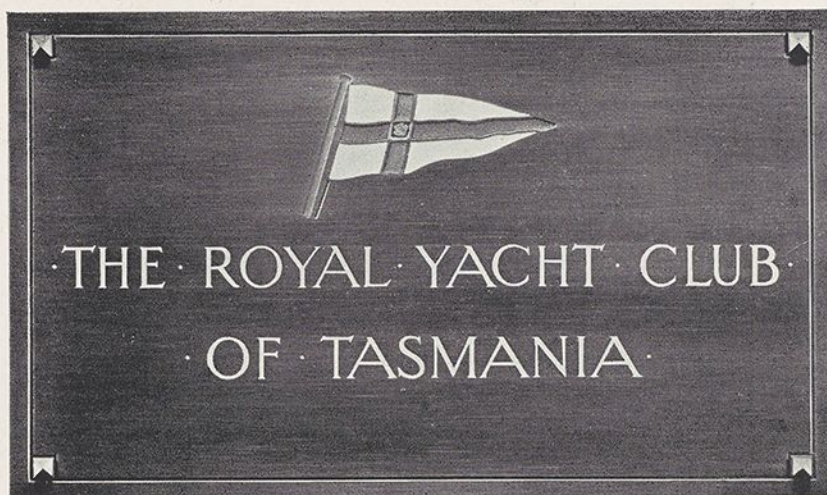
ARCHITECT COLIN SMITH



BUILT LETTERS WITH POLISHED STAINLESS STEEL FACES AND ZINC SIDES LACQUERED BLACK.

WUNDERLICH METAL LETTERS

OXIDISED BRONZE NAMEPLATE WITH FLAG LETTERING
AND BORDER, VITREOUS ENAMELLED IN FOUR COLOURS.
A. LAURISTON CRISP, ARCHITECT. SIZE: 20" x 12"



OXIDISED BRONZE NAMEPLATE, WITH SATIN FINISHED RAISED
LETTERING AND SURROUND. SIZE: 30" DIAM.



OXIDISED BRONZE NAMEPLATE, WITH INCISED LETTERING,
FINISHED IN CONTRASTING COLOUR. SIZE 18" x 15".



OXIDISED BRONZE NAMEPLATE WITH
LETTERING AND LINES VITREOUS
ENAMELLED IN TWO COLOURS.
SIZE: 21" x 12".

On request, we prepare designs for Nameplates, Directories, etc., either Cast or Built, or Incised and Vitreous Enamel Filled, and submit a copy of the drawing together with our Quotation for approval.

WUNDERLICH NAMEPLATES

SPPAM
691.0994
Wunder
Met/012



VITREOUS ENAMELLED BRONZE NAMEPLATES AND CAST BRONZE ORNAMENTS

NOTE: Verte Patina finish to Rising Sun, Manly District Hospital Nameplate, etc.

WUNDERLICH LIMITED
Manufacturers of Building Materials of Quality

SHOWROOMS:

SYDNEY
BRISBANE

NEWCASTLE
PERTH

MELBOURNE
HOBART

ADELAIDE
LAUNCESTON

33217013489357

W. E. BAKER & CO. PTY. LTD.
ENGRAVERS AND PRINTERS
100 NORTH YORK ST. SYDNEY