



Fibrolite homes : (fibro-cement)

AUTHOR(S)

James Hardie and Co

PUBLICATION DATE

01-01-1934

HANDLE

[10536/DRO/DU:30122285](#)

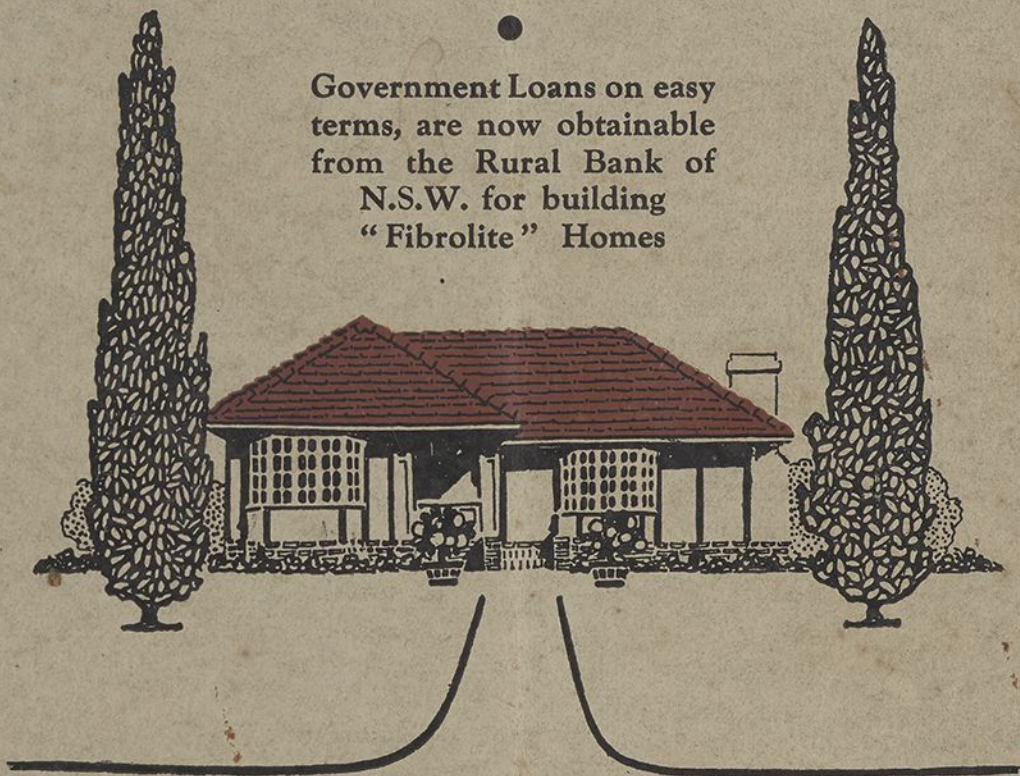
Downloaded from Deakin University's Figshare repository

Deakin University CRICOS Provider Code: 00113B

FIBROLITE HOMES

(FIBRO-CEMENT)

Government Loans on easy
terms, are now obtainable
from the Rural Bank of
N.S.W. for building
"Fibrolite" Homes



Sole Manufacturers of "Fibrolite":

JAMES HARDIE & COY. LTD.

York and Barrack Streets, Sydney, N.S.W.

And at Newcastle, Brisbane, Melbourne, Perth, and Wellington, N.Z.

EXTRACT FROM LEAFLET ISSUED BY
THE RURAL BANK OF N.S.W.
ADVANCES FOR HOMES DEPARTMENT

●

"12. EXTERNAL WALL COVERINGS:

- (a)
- (b) Weatherboards from base to sill height, then FIBRO-CEMENT above.
All edges of Fibro-Cement to be close and to be supported by studs or rails with cover strips of not less than 3" x $\frac{3}{4}$ " Oregon, Redwood, or Fibro-Cement over all joints.
- (c) FIBRO-CEMENT THROUGHOUT, with cover strips as in (b).
All external Fibro-Cement Sheets at horizontal joints to be flashed with 2-lb. lead. (Galvanised iron subject to approval.)

"13. INTERNAL WALL COVERING:

- (a)
- (b) FIBRO-CEMENT.
- (c)
- (d)

"14. ROOF COVERING:

Slates, Tiles, or Iron.

- (a) If Fibro-Cement Slates are used, roofing felt must be placed on top of battens and under slates where the roof pitch is not less than 35 degrees and slates must have a 4" lap.

NOTE: "FIBROLITE" is the name adapted for our Australian manufactured Asbestos-Cement Sheets, which material, prior to the war, was imported from England and sold by us under the name of FIBRO-CEMENT.

JAMES HARDIE & COY. LTD.

❧

691.0994
Hardie
Jam/FNF
1934

SPAM

BUILD FOR

Permanence – Fire Safety and Economy

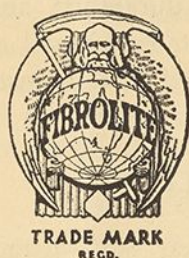
Use Hardie's Genuine

Fibrolite

ASBESTOS CEMENT SHEETS

(FIBRO-CEMENT)

For External and
Internal Walls,
Ceilings, Gable-
ends, etc.



Roof with "Fibro-
lite" Tiles or
Corrugated
Sheets.

"Defies Time's Touch"

MADE IN N.S.W.

Sole Manufacturers:

JAMES HARDIE & COY. LTD.

"Asbestos House"

Cnr. York and Barrack Streets, Sydney, N.S.W.

Box 3935V, G.P.O. :: Telephone B7721 (4 lines)

334 Hunter Street, Newcastle West

And at Melbourne, Brisbane, Perth, and Wellington, N.Z.

CATALOGUE REFERENCE . . . F.6

332170134 97582



When you Build...

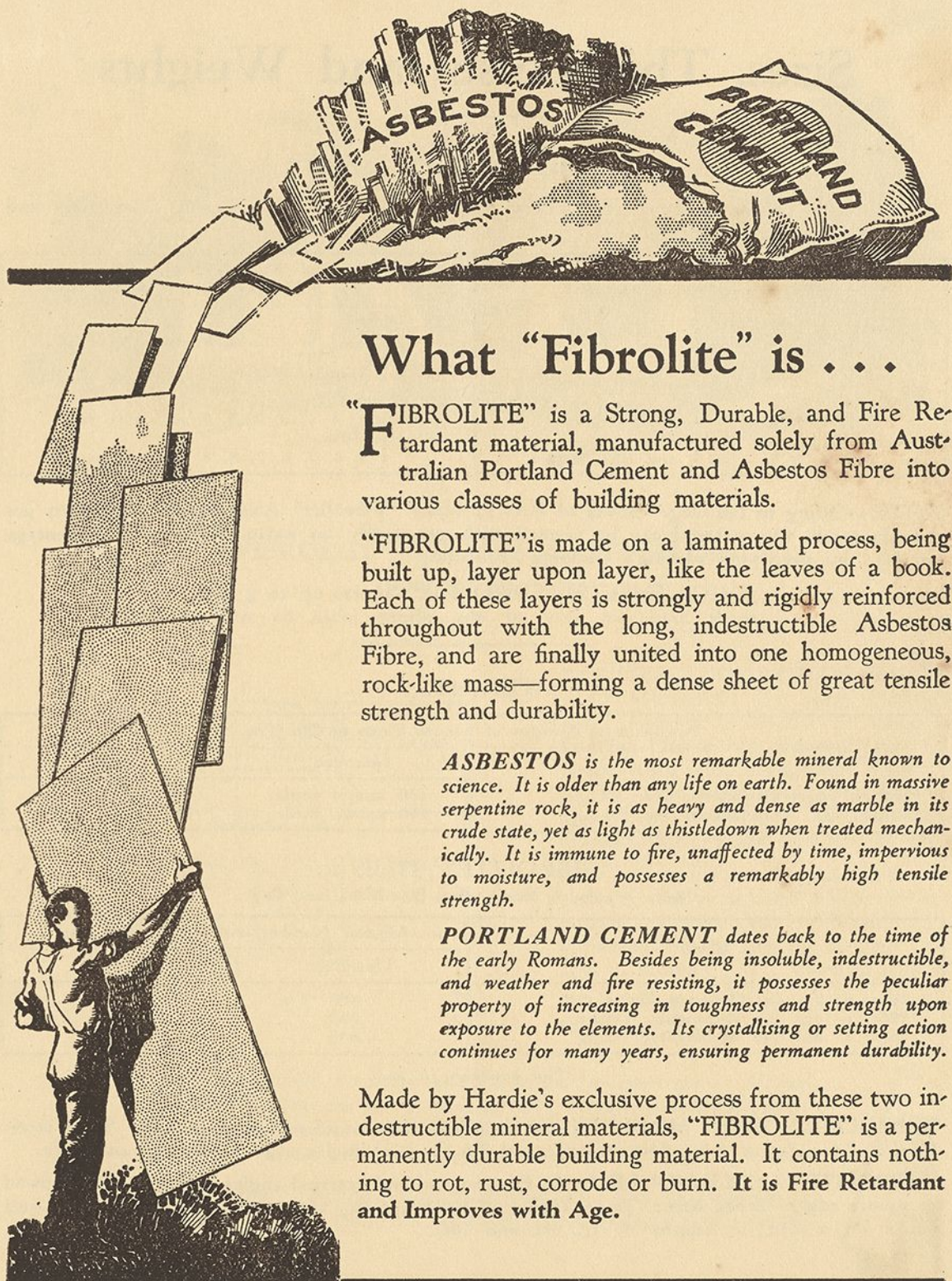
MAKE sure that your new home will embody all those features of attractive appearance, comfort, fire safety, durability, and economy you have so carefully planned for it. Whether your home will combine these features will depend largely upon the materials to be used in its construction. NOW before you build . . . is the time to decide the question.

Choose wisely ! Decide on "FIBROLITE."

Maximum comfort—year in and year out—attractive appearance fire safety permanence freedom from the menace of white ants and borers sound economy in both initial cost and maintenance ALL can be achieved by using Hardie's Genuine "FIBROLITE" Asbestos Cement Sheets for the External and Internal Walls, Ceilings, Partitions, Gable-ends, Eaves-soffits, etc., of your new home and "FIBROLITE" Tiles for Roofing. The charm and beauty of your home will be still further enhanced if you use "TILUX" Marble-finished Panels for covering your Bathroom and Kitchen Walls.



***NOTE:** We do not build "FIBROLITE" Homes or undertake any building construction work. Any builder in your district will give you an estimate for a "FIBROLITE" dwelling—built to your plans and specifications.*



What "Fibrolite" is . . .

"FIBROLITE" is a Strong, Durable, and Fire Retardant material, manufactured solely from Australian Portland Cement and Asbestos Fibre into various classes of building materials.

"FIBROLITE" is made on a laminated process, being built up, layer upon layer, like the leaves of a book. Each of these layers is strongly and rigidly reinforced throughout with the long, indestructible Asbestos Fibre, and are finally united into one homogeneous, rock-like mass—forming a dense sheet of great tensile strength and durability.

ASBESTOS is the most remarkable mineral known to science. It is older than any life on earth. Found in massive serpentine rock, it is as heavy and dense as marble in its crude state, yet as light as thistledown when treated mechanically. It is immune to fire, unaffected by time, impervious to moisture, and possesses a remarkably high tensile strength.

PORTLAND CEMENT dates back to the time of the early Romans. Besides being insoluble, indestructible, and weather and fire resisting, it possesses the peculiar property of increasing in toughness and strength upon exposure to the elements. Its crystallising or setting action continues for many years, ensuring permanent durability.

Made by Hardie's exclusive process from these two indestructible mineral materials, "FIBROLITE" is a permanently durable building material. It contains nothing to rot, rust, corrode or burn. It is Fire Retardant and Improves with Age.

Sizes, Thicknesses and Weights

"FIBROLITE" FLAT SHEETS :

"FIBROLITE" Asbestos-Cement Flat Sheets are obtainable in the following stock sizes and thicknesses:—

For External Walls, Gables, etc. No. 5 Sheets, 3/16in. Thick.	For Internal Walls and Ceilings, etc. No. 4 Sheets, 5/32in. Thick.
4ft. Wide: x 3, 4, 5, 6, 7, 8, 9, 10, 11 & 12 ft. long.	4ft. Wide: x 3, 4, 5, 6, 7, 8, 9, and 10ft. long.
3ft. Wide: x 3, 4, 5, 6, 7, 8, 9, 10, 11 & 12ft. long.	3ft. Wide: x 3, 4, 5, 6, 7, 8, 9, and 10ft. long.
2ft. Wide: x 3, 4, 5, 6, 7, 8, 9, and 10ft. long.	2ft. Wide: x 3, 4, 5, 6, 7, 8, 9, and 10ft. long.
18 inches Wide: x 3, 4, 5, 6, 7, 8, 9, and 10ft. long.	18 inches Wide: x 3, 4, 5, 6, 7, 8, 9, and 10ft. long.

NOTE.—Owing to the large variety of sizes in which "Fibrolite" Asbestos-Cement Sheets are manufactured, the material can be erected with practically no waste. This is an advantage obtained by specifying Hardie's Genuine "Fibrolite."

THICK SHEETS: "FIBROLITE" Sheets up to $\frac{3}{4}$ inch thick made in any of the above sizes to order.

WEIGHTS :

Approximate Number of Square Yards to One Ton		
	Uncrated	Crated
"FIBROLITE" Flat Sheets, No. 5	130 square yards	110 square yards
"FIBROLITE" Flat Sheets, No. 4	160 square yards	140 square yards

"FIBROLITE" TILES :

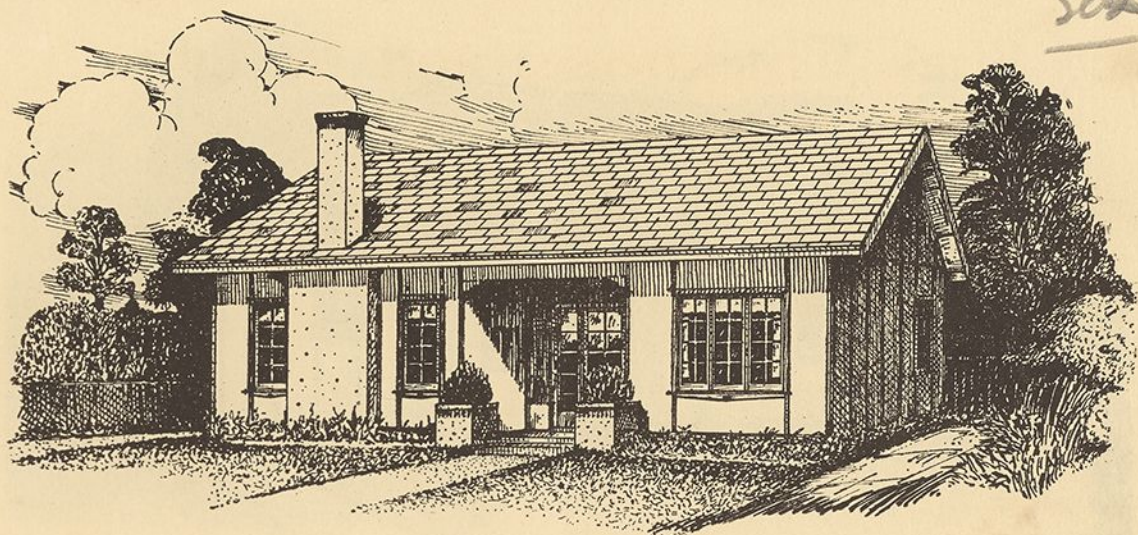
Made in colours: Russet, Red, Blue-Black, and Grey.

Sizes	Approx. Number of Tiles to One Ton	
	Uncrated	Crated
16in. x 16in. for Diagonal Fixing	850	750
*20in. x 10in. for Rectangular Fixing	1,000	900
16in. x 8in. for Rectangular Fixing	1,650	1,450

*Not available in Red.

"FIBROLITE" COVER MOULDINGS: Supplied with round or square edges. Stock sizes: $1\frac{1}{2}$ in. x $\frac{5}{16}$ in., 2in. x $\frac{5}{16}$ in., $2\frac{1}{2}$ in. x $\frac{5}{16}$ in., and 3in. x $\frac{5}{16}$ in., in lengths of 7ft., 8ft. and 10ft.

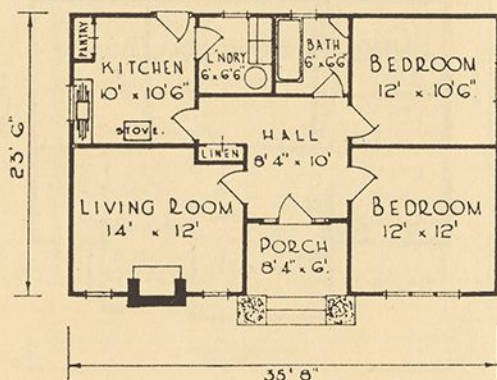
"FIBROLITE" ANGLE MOULDINGS: For internal and external angles. Supplied with round or square edges. Stock sizes: $1\frac{1}{2}$ in. x $1\frac{1}{2}$ in. x $\frac{5}{16}$ in., 2in. x 2in. x $\frac{5}{16}$ in., $2\frac{1}{2}$ in. x $2\frac{1}{2}$ in. x $\frac{5}{16}$ in., and 3in. x 3in. x $\frac{5}{16}$ in., in lengths of 7ft., 8ft. and 10ft.



“FIBROLITE” (Fibro-Cement) DWELLING

DESIGN No. 101

£302



“FIBROLITE” BUILDS BETTER HOMES: By using Hardie’s Genuine “FIBROLITE” Asbestos-Cement Sheets for External and Internal Walls and Ceilings and “FIBROLITE” Tiles for Roofing, you will be assured of a modern, attractive and durable home—at the minimum of cost.

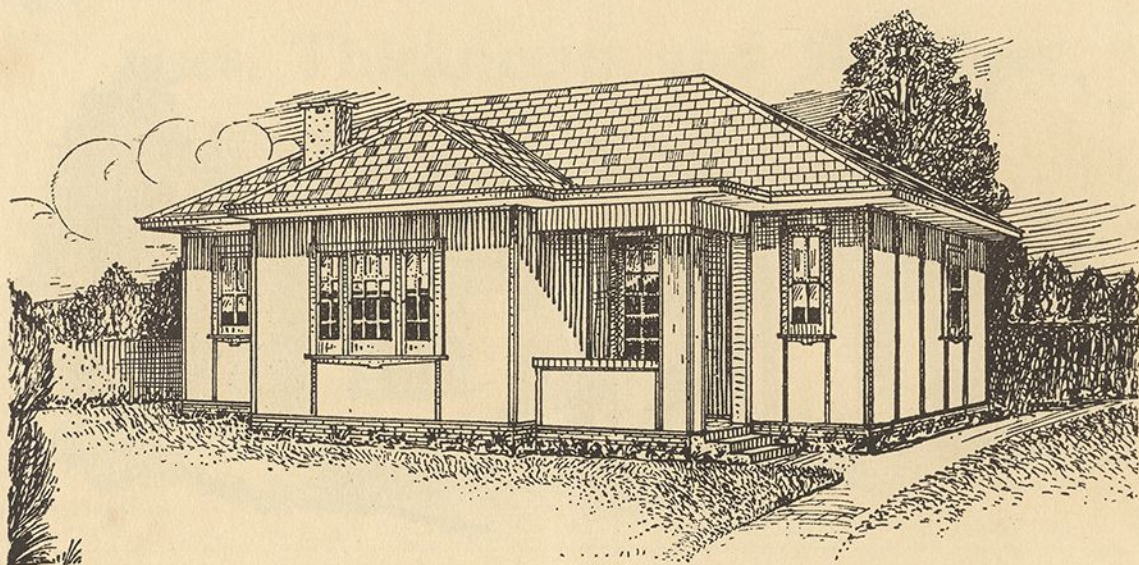
You will also have the satisfaction of knowing that your home will be fire retardant . . . permanently durable . . . unharmed by the ravages of time . . . cool in summer . . . warm in winter.

What more could you desire of the home you have planned?

NOTE: If you like this design, submit it to your Architect and he will prepare complete plans and specifications for you. Be sure, however, to specify **Hardie’s Genuine “FIBROLITE”** Asbestos-Cement Sheets for external and internal walls and ceilings and “FIBROLITE” Tiles for roofing.

GOVERNMENT LOANS, ON EASY TERMS, ARE OBTAINABLE FROM THE RURAL BANK OF N.S.W. FOR BUILDING “FIBROLITE” HOMES.





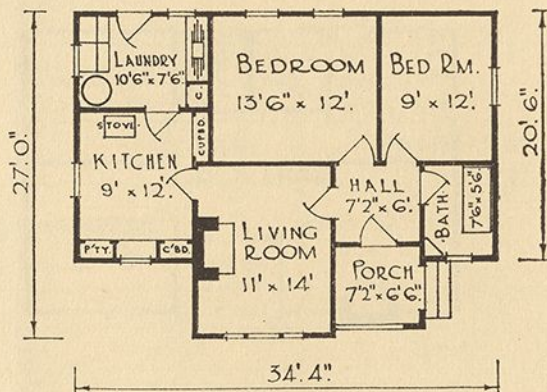
"FIBROLITE" (Fibro-Cement) DWELLING

DESIGN No. 102

L 300

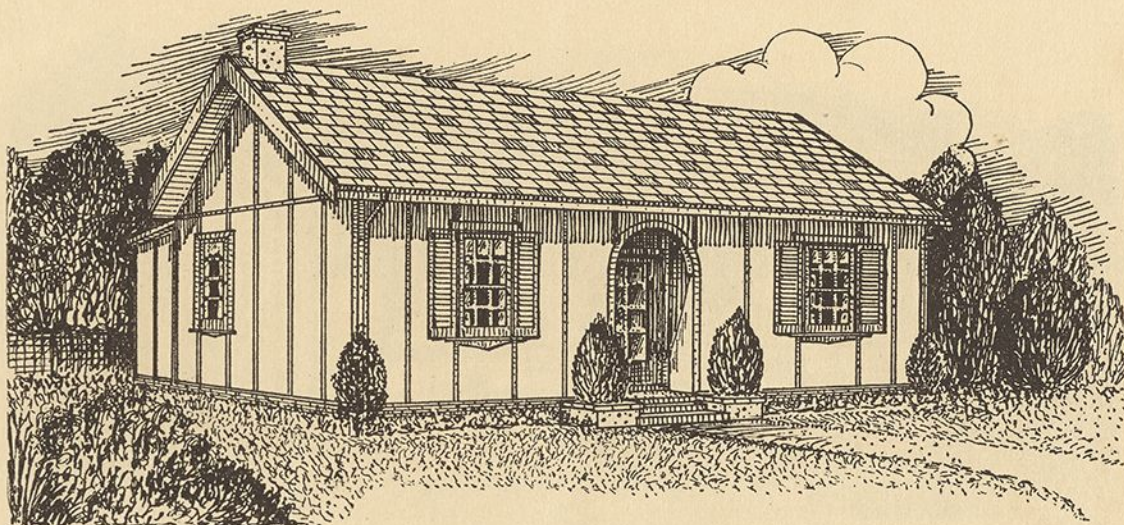
"FIBROLITE" ENSURES LOW FIRST COST: And, what a big consideration this is. It means that a "FIBROLITE" home will cost you less than any other type of permanent dwelling you can erect . . . built, of course, to same size and design.

It means also, that if you are obtaining a loan with which to build your home, the low capital cost of a "FIBROLITE" dwelling will not involve heavy interest charges. You will thus be able to pay off both principal and interest in a comparatively few years instead of having to meet the heavy burden of high interest charges inevitable with more costly types of homes.



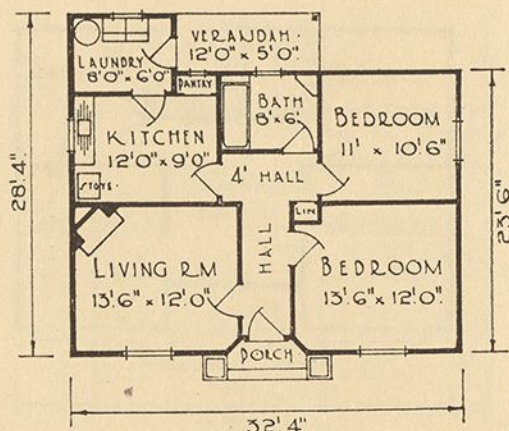
NOTE: If you like this design, submit it to your Architect and he will prepare complete plans and specifications for you. Be sure, however, to specify *Hardie's Genuine "FIBROLITE" Asbestos-Cement Sheets* for external and internal walls and ceilings and "FIBROLITE" Tiles for roofing.

GOVERNMENT LOANS, ON EASY TERMS, ARE OBTAINABLE FROM THE RURAL BANK OF N.S.W. FOR BUILDING "FIBROLITE" HOMES.



"FIBROLITE" (Fibro-Cement) DWELLING

DESIGN No. 103 *L 319*



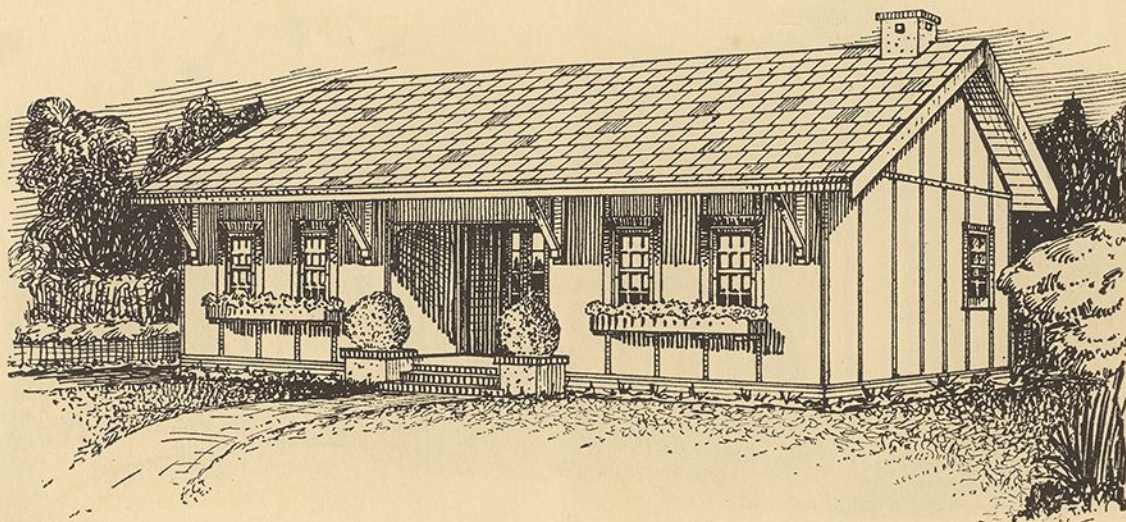
"FIBROLITE" ENSURES LOW UPKEEP COSTS: It is a fact that many thousands of homeowners in Australia are confronted every two or three years with the problem of meeting heavy maintenance costs for painting, renovations and repairs to their homes.

You can banish this worry, trouble and expense by using Hardie's "FIBROLITE" Asbestos Cement Sheets for the external and internal walls and ceilings of your home. "FIBROLITE" does not require the protection of costly oil paint. It is weatherproof and contains nothing to rot, rust, corrode or deteriorate in any way. **IT IMPROVES WITH AGE!**

NOTE: If you like this design, submit it to your Architect and he will prepare complete plans and specifications for you. Be sure, however, to specify **Hardie's Genuine "FIBROLITE"** Asbestos-Cement Sheets for external and internal walls and ceilings and "FIBROLITE" Tiles for roofing.

GOVERNMENT LOANS, ON EASY TERMS, ARE OBTAINABLE FROM THE RURAL BANK OF N.S.W. FOR BUILDING "FIBROLITE" HOMES.



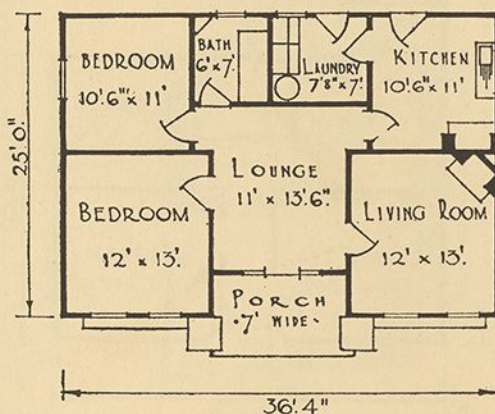


"FIBROLITE" (Fibro-Cement) DWELLING

DESIGN No. 104 *L320*

"FIBROLITE" ELIMINATES WASTE: As Hardie's Genuine "FIBROLITE" Asbestos-Cement Sheets are obtainable in 44 handy stock sizes (see page 4), waste can be entirely eliminated where this economical building material is used.

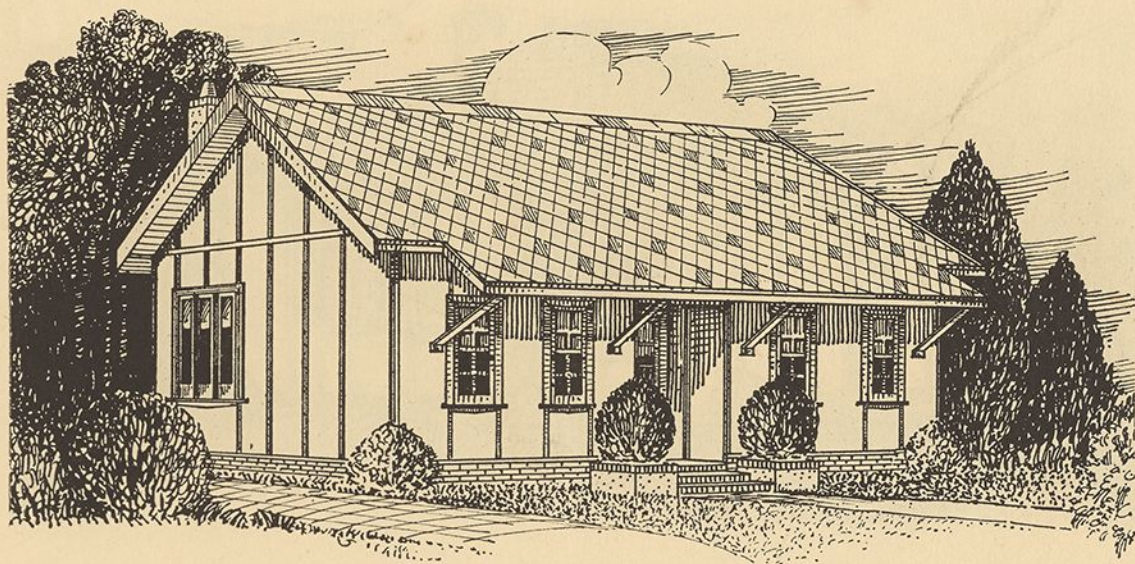
Ensure that waste will be reduced to a minimum in the construction of your new home by specifying Hardie's Genuine "FIBROLITE" Asbestos-Cement Sheets for external and internal walls, ceilings, gable-ends, eaves-soffits, etc.



NOTE: If you like this design, submit it to your Architect and he will prepare complete plans and specifications for you. Be sure, however, to specify *Hardie's Genuine "FIBROLITE" Asbestos-Cement Sheets* for external and internal walls and ceilings and "FIBROLITE" Tiles for roofing.

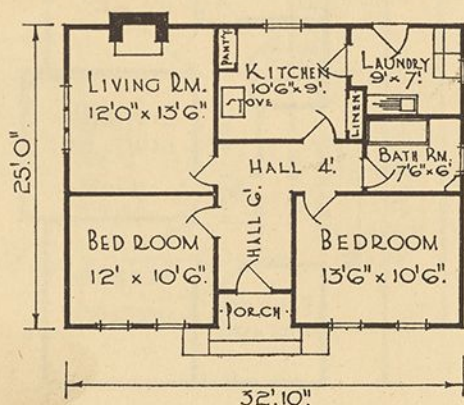
GOVERNMENT LOANS, ON EASY TERMS, ARE OBTAINABLE FROM THE RURAL BANK OF N.S.W. FOR BUILDING "FIBROLITE" HOMES.





“FIBROLITE” (Fibro-Cement) DWELLING

DESIGN No. 105 *288*

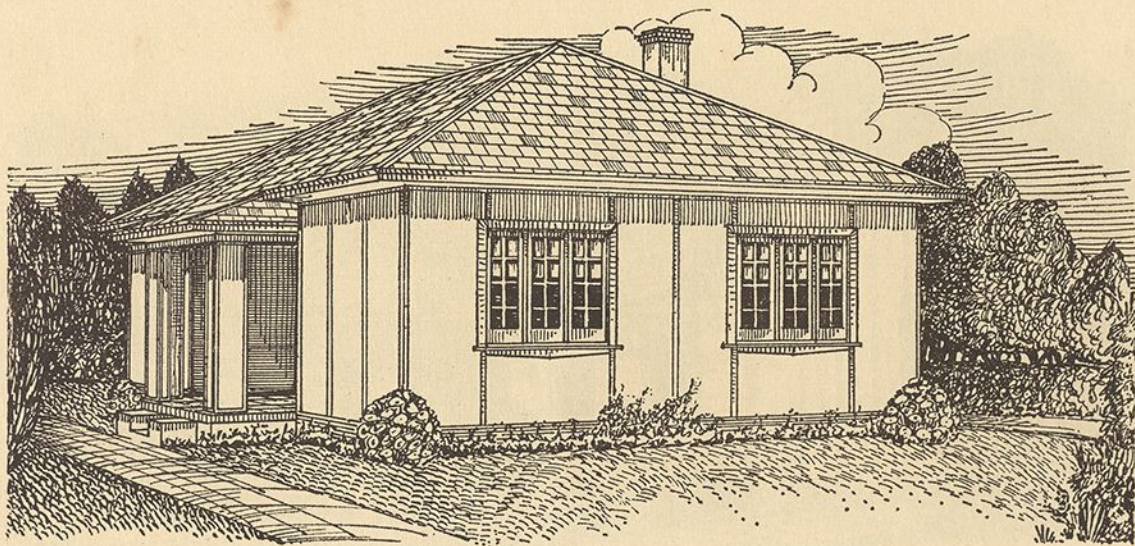


QUICK CONSTRUCTION — LESS LABOUR: The amount of labour required in the construction of your new home will naturally have a big bearing on its total erected cost. This is just one reason why you will save money by building with Hardie's Genuine “FIBROLITE.”

“FIBROLITE” enables dwellings to be erected easily, quickly and at a minimum cost for labour. Supplied in big, sturdy building sheets in a large range of handy stock sizes, it is easily and quickly erected—with considerably less labour than is necessary with most building materials. This big saving in labour materially reduces the cost of the building.

NOTE: If you like this design, submit it to your Architect and he will prepare complete plans and specifications for you. Be sure, however, to specify Hardie's Genuine “FIBROLITE” Asbestos-Cement Sheets for external and internal walls and ceilings and “FIBROLITE” Tiles for roofing.



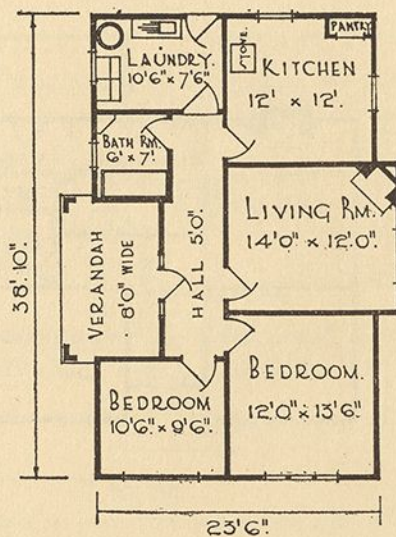


"FIBROLITE" (Fibro-Cement) DWELLING

DESIGN No. 106 *327*

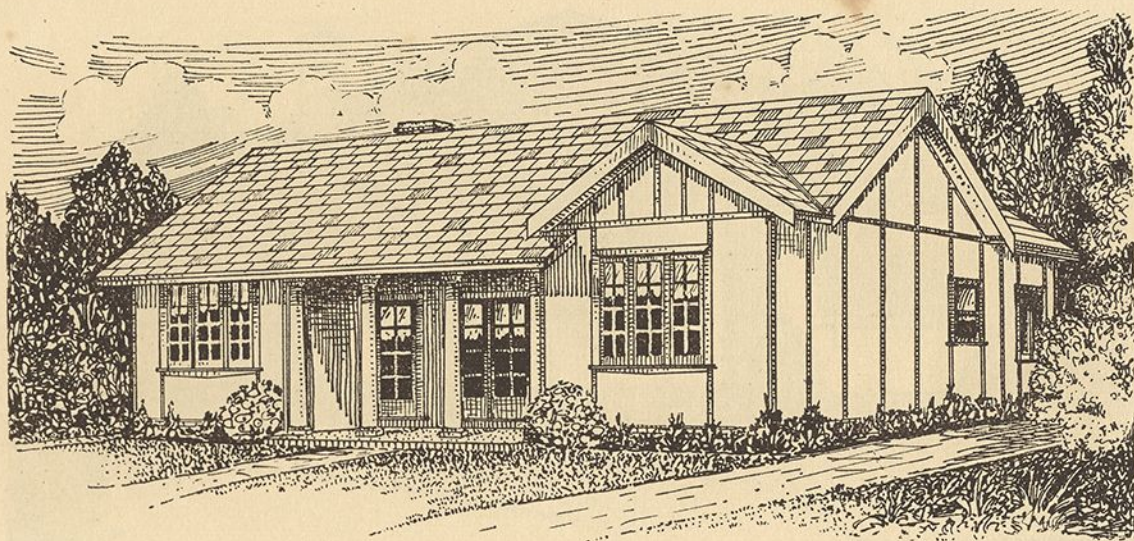
NO PAINTING: As it is not necessary to paint "FIBROLITE" to protect it against the elements, this item of expense can be eliminated where this durable building material is used for external walls. Left unpainted in its natural colour of pleasing grey, "FIBROLITE" gives an artistic appearance to any dwelling.

If painting is desired for decorative purposes, all that is necessary is an application of Hardie's "FIBRO-C" Cold Water Paint, which costs about 50 per cent. less than oil paint. Think what this saving alone means to you—both in initial cost and maintenance.



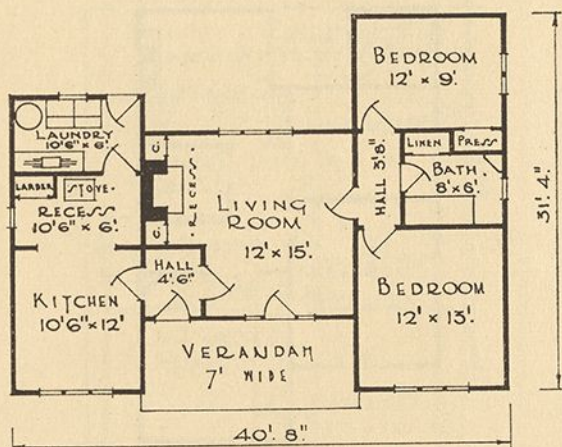
NOTE: If you like this design, submit it to your Architect and he will prepare complete plans and specifications for you. Be sure, however, to specify *Hardie's Genuine "FIBROLITE" Asbestos-Cement Sheets* for external and internal walls and ceilings and "FIBROLITE" Tiles for roofing.





"FIBROLITE" (Fibro-Cement) DWELLING

DESIGN No. 107 *L360*



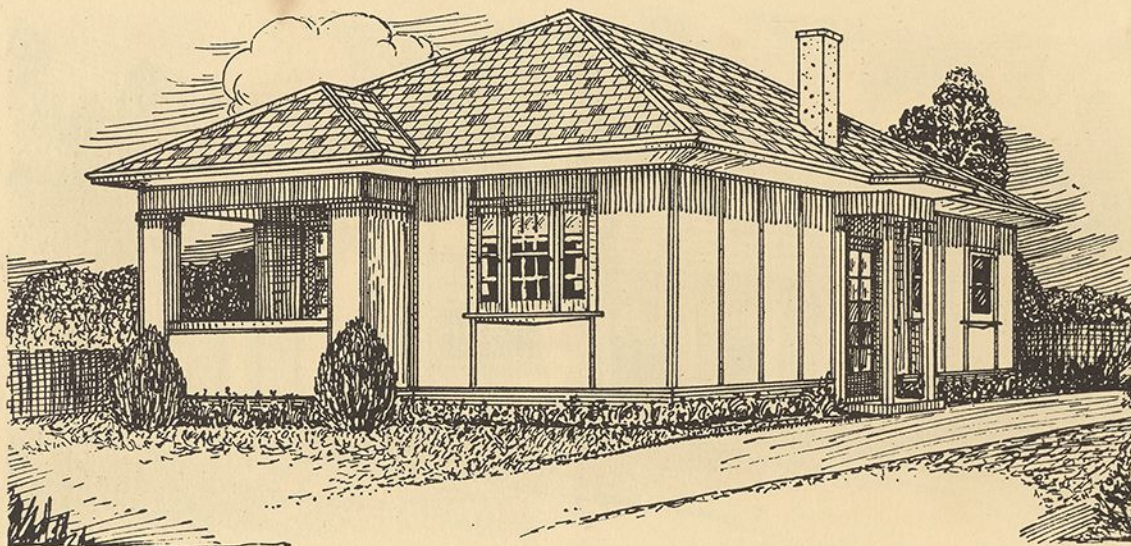
LOW INSURANCE: Insurance Companies, recognising the unique fire retardant qualities of "FIBROLITE" allow a reduction of 25 per cent. in rates for dwellings or other types of buildings where Hardie's Genuine "FIBROLITE" Asbestos-Cement Sheets are used for walls, ceilings, etc., in place of materials that are non-resistant to fire.

Think what this yearly saving means to you!

GOVERNMENT LOANS, ON EASY TERMS, ARE OBTAINABLE FROM THE RURAL BANK OF N.S.W. FOR BUILDING "FIBROLITE" HOMES.

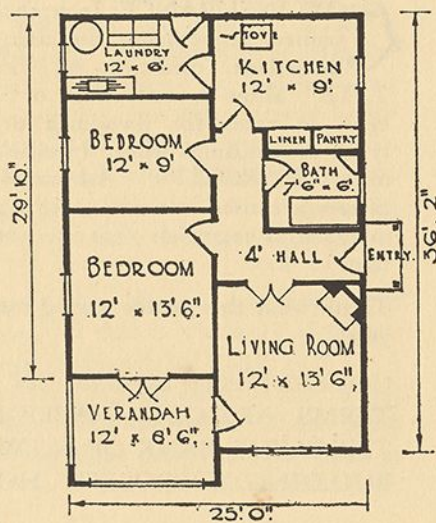
NOTE: If you like this design, submit it to your Architect and he will prepare complete plans and specifications for you. Be sure, however, to specify *Hardie's Genuine "FIBROLITE"* Asbestos-Cement Sheets for external and internal walls and ceilings and "FIBROLITE" Tiles for roofing.



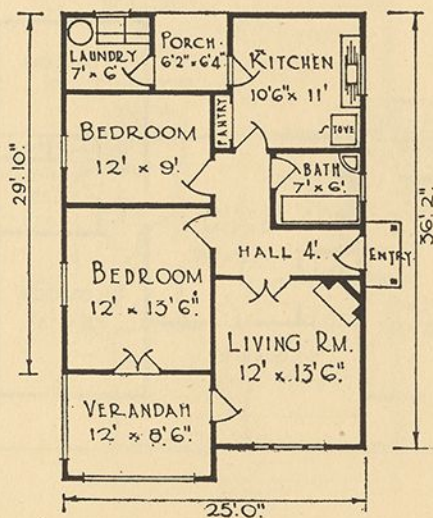


"FIBROLITE" (Fibro-Cement) DWELLING

DESIGN No. 108 *320*



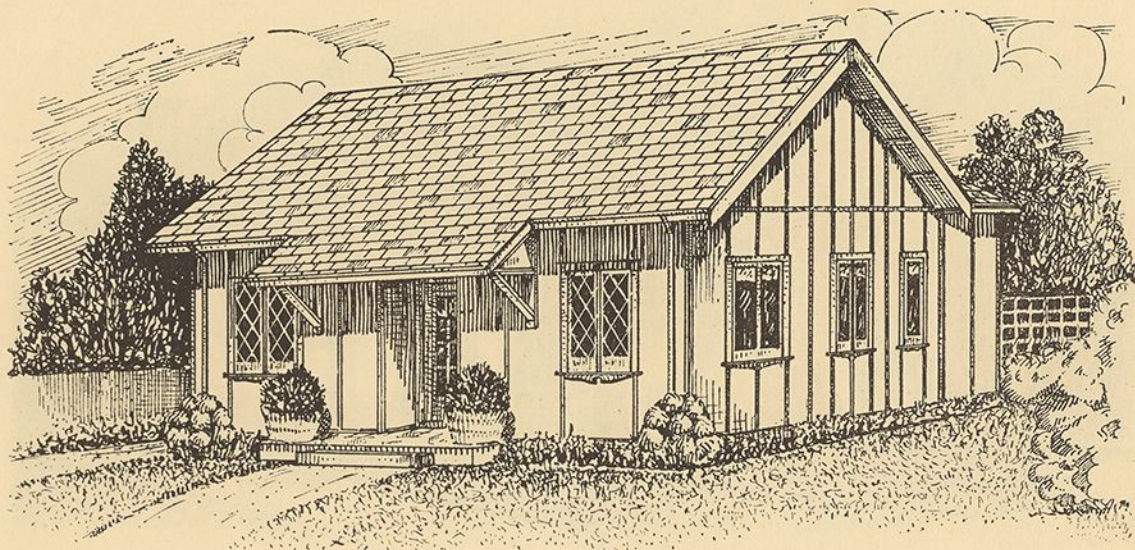
No. 108A



No. 108B

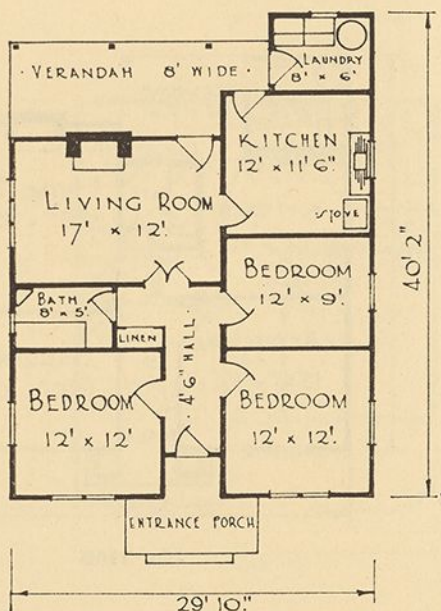
GOVERNMENT LOANS, ON EASY TERMS, ARE OBTAINABLE FROM THE RURAL BANK OF N.S.W. FOR BUILDING "FIBROLITE" HOMES.





"FIBROLITE" (Fibro-Cement) DWELLING

DESIGN No. 109 *420*



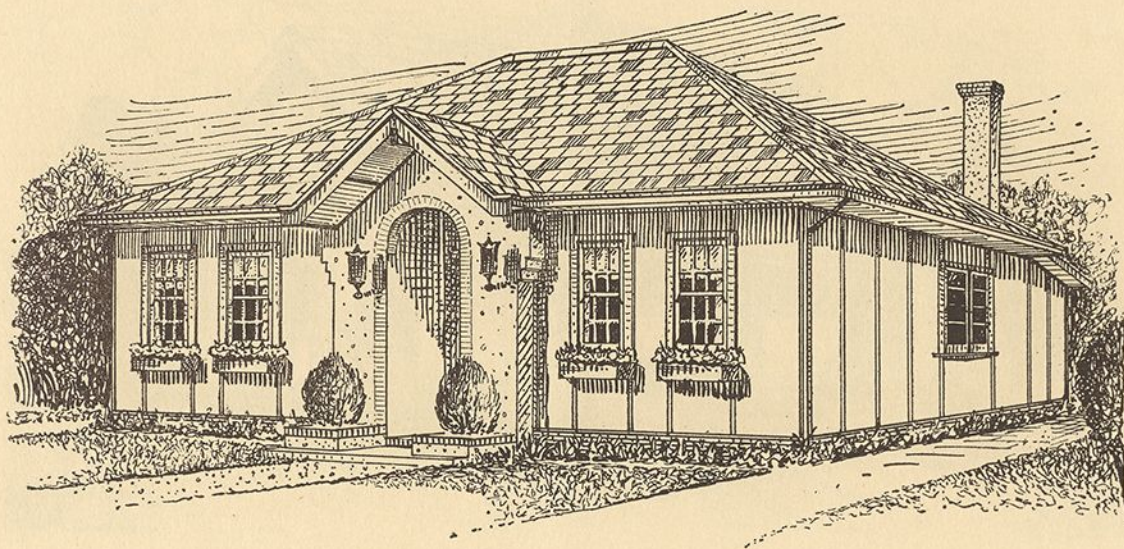
LOW FREIGHT COSTS: "FIBROLITE" is carried by the N.S.W. Government Railways Department at favourable rates of freight, enabling "FIBROLITE" dwellings to be erected in the country districts for very little extra over and above the cost in the near suburbs of Sydney.

"FIBROLITE" is light in weight—one ton of sheets 5/32in. thick will cover a wall or ceiling area of approximately 1,440 square feet.

Hardie's Genuine "FIBROLITE" is stocked by leading Storekeepers and Timber Merchants throughout Australia and New Zealand.

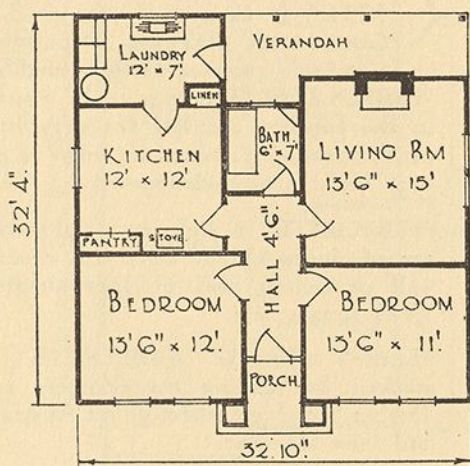
NOTE: If you like this design, submit it to your Architect and he will prepare complete plans and specifications for you. Be sure, however, to specify *Hardie's Genuine "FIBROLITE" Asbestos-Cement Sheets* for external and internal walls and ceilings and "FIBROLITE" Tiles for roofing.



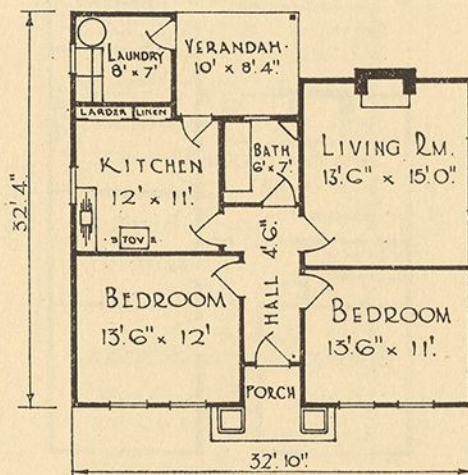


"FIBROLITE" (Fibro-Cement) DWELLING

DESIGN No. 110 ~~380~~



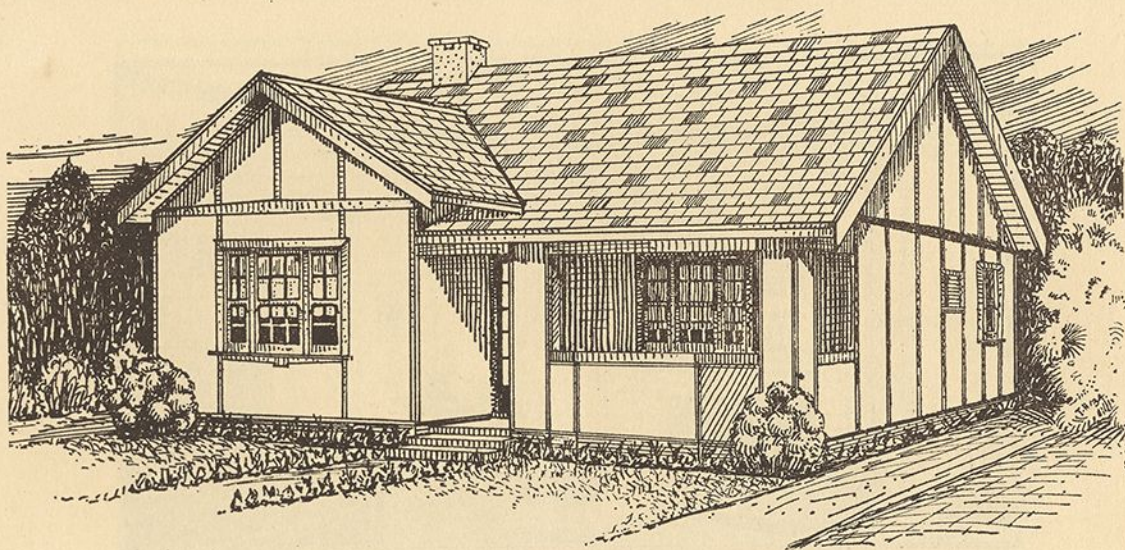
No. 110A



No. 110B

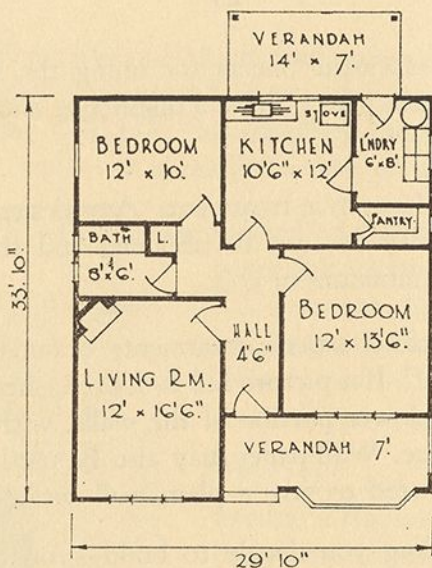


GOVERNMENT LOANS, ON EASY TERMS, ARE OBTAINABLE FROM THE RURAL BANK OF N.S.W. FOR BUILDING "FIBROLITE" HOMES.



"FIBROLITE" (Fibro-Cement) DWELLING

DESIGN No. 111 *355*

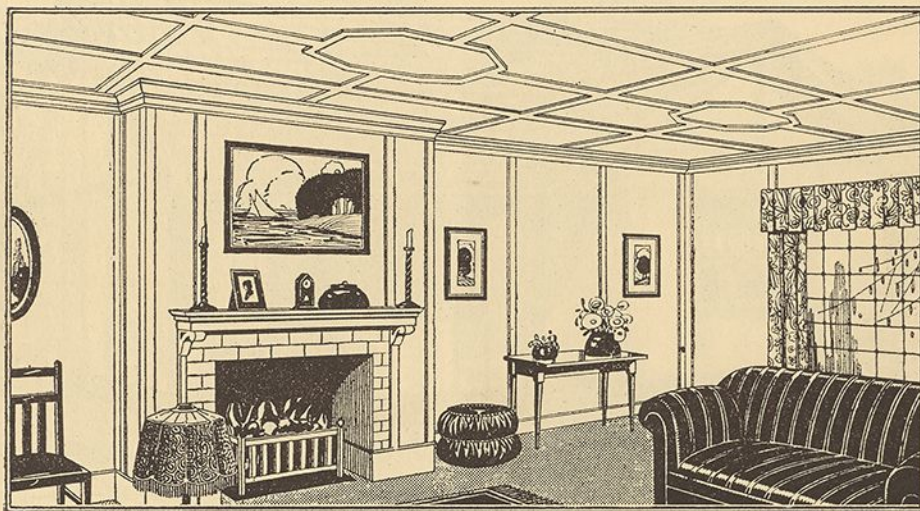


MINIMISES FIRE RISKS:
Made solely from Asbestos Fibre and Portland Cement, "FIBROLITE" is a Fire Retardant building material—thus, when used for external and internal walls and ceilings, it reduces the fire hazard to a minimum. This factor of fire safety is one of paramount importance, especially for country dwellings.

Keep in mind, too, that "FIBROLITE" will enable you to build a fire retardant dwelling at a lower cost than can be obtained by the use of any other building material.

NOTE: If you like this design, submit it to your Architect and he will prepare complete plans and specifications for you. Be sure, however, to specify Hardie's Genuine "FIBROLITE" Asbestos-Cement Sheets for external and internal walls and ceilings and "FIBROLITE" Tiles for roofing.





“Fibrolite” Ensures Artistic Walls and Ceilings

BY using Hardie’s “FIBROLITE” Asbestos-Cement Sheets for lining the internal walls and ceilings of your new home, you can plan to have a distinctive and appropriate treatment for every room.

“FIBROLITE” lends itself to every interior decorative treatment. Any desired panel effect, no matter how simple or elaborate it may be, can be obtained and the most delicate colour schemes carried out . . . at the minimum of cost.

The above illustration shows but one of the many artistic treatments obtained with walls and ceilings panelled with “FIBROLITE.” If a picture rail is desired, sheets 6ft., 7ft. or 8ft. long are used for the panels on the lower portion of the walls, with sheets 2ft., 3ft., or 4ft. wide above forming the frieze. Wall-paper may also be used, either panelled or with the cover mouldings eliminated to give a plain wall surface.



No matter what type of dwelling you decide to build—you can use “FIBROLITE” Asbestos-Cement Sheets for lining its internal walls and ceilings, or for the latter only. You will thus give your home the advantages of a wall and ceiling material that is always artistic, fire retardant, proof against white ants and borers and **impervious to dampness !**



Use "Tilux" for your Bathroom and Kitchen Walls

THE problem of "high cost" need not deter you from giving your new home the added comfort and charm of a modern and artistic bathroom and kitchen. By using "TILUX" for panelling these rooms, you can give them all the advantages of tiled walls—at a mere fraction of the cost.

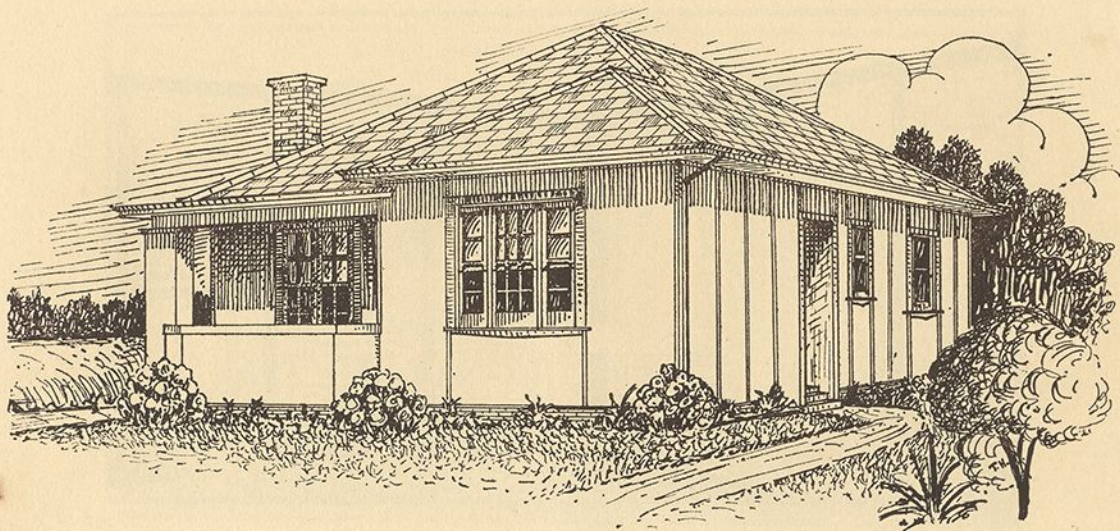
"TILUX" is a "marble-finished" Asbestos-Cement wall panel and is obtainable in eight beautiful colours or patterns and in twenty-two stock sizes. It has a smooth, highly-glazed surface that provides all the luxury and hygienic cleanliness of marble. It is Fire Retardant and Waterproof—Hygienic and Easy to Clean . . . soap and water keeps it spotless; always artistic and immaculate.



*Big sturdy panels —
easily erected!*

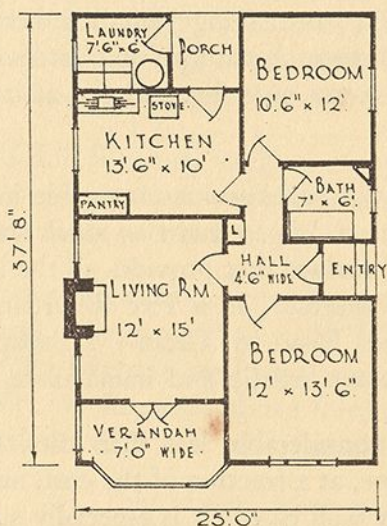
"TILUX" not only costs considerably less than tiles, but is fixed in a fraction of the time, at a fraction of the cost, and can be applied to practically any wall base. It is especially suitable for buildings of the frame type, as it is easily and quickly fixed to the wall studs. Any carpenter can erect "TILUX."

*Illustrated pamphlet containing coloured illustrations of
patterns, sizes, directions for use, etc., supplied on request.*

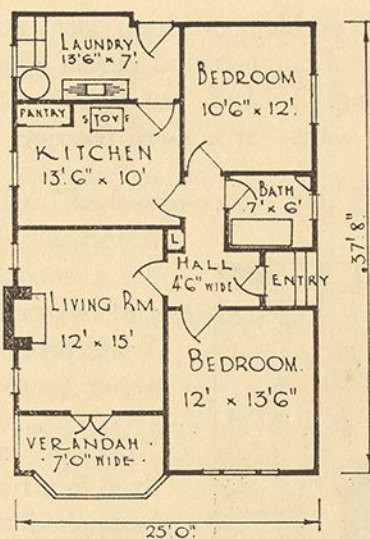


"FIBROLITE" (Fibro-Cement) DWELLING

DESIGN No. 112 **330**



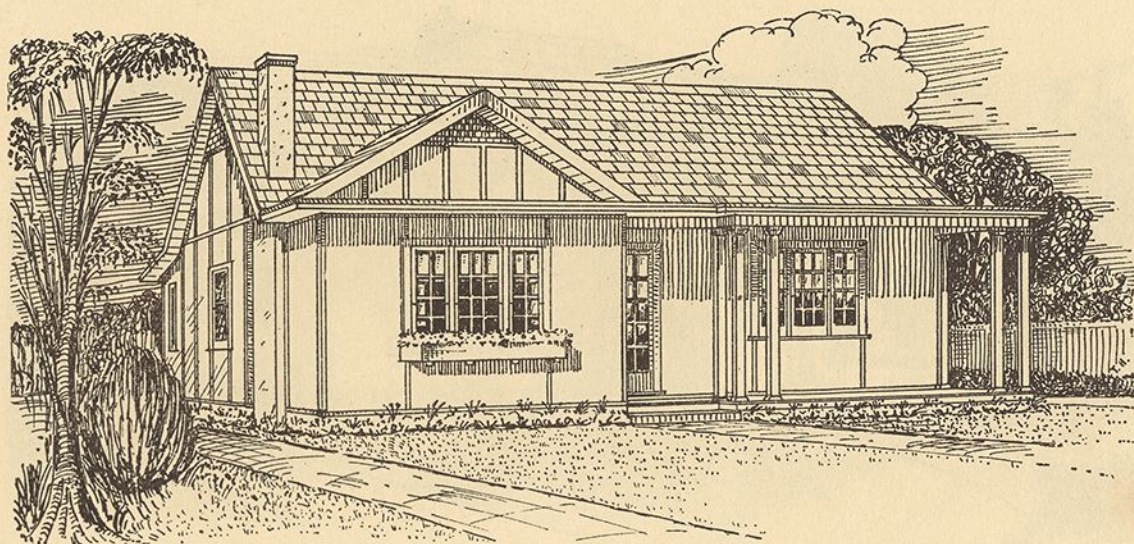
No. 112A



No. 112B

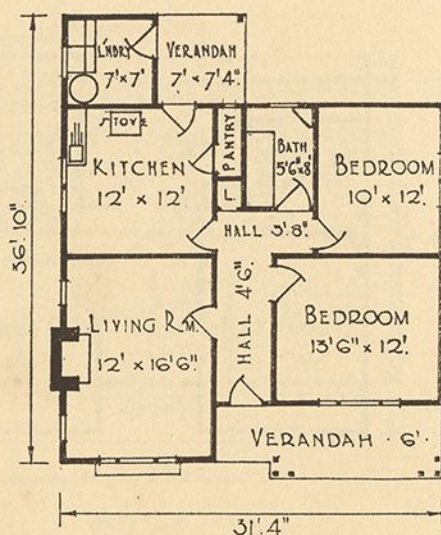
GOVERNMENT LOANS, ON EASY TERMS, ARE OBTAINABLE FROM THE RURAL BANK OF N.S.W. FOR BUILDING "FIBROLITE" HOMES.





"FIBROLITE" (Fibro-Cement) DWELLING

DESIGN No. 113 **410**

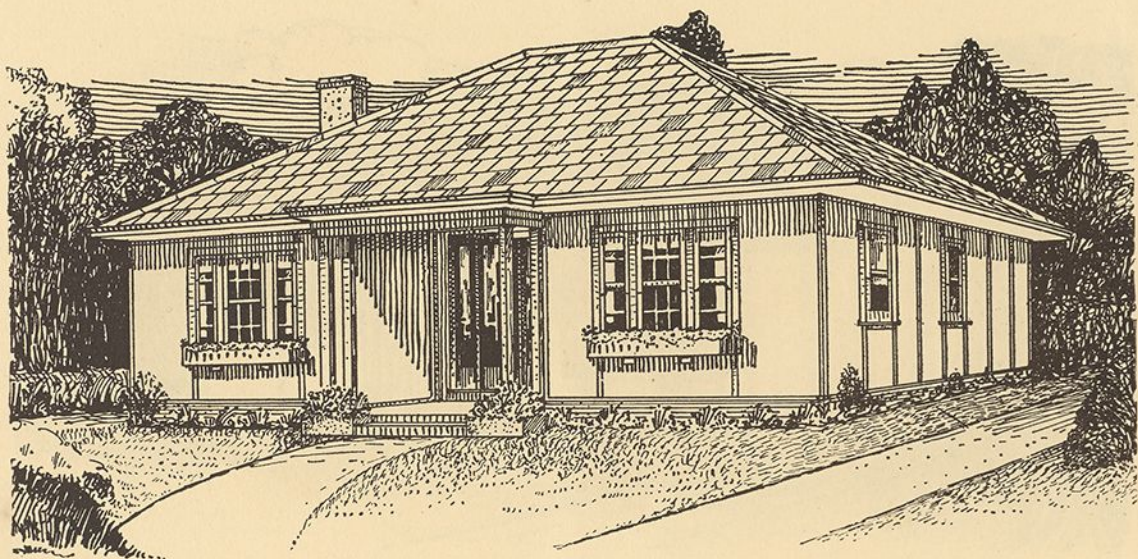


WHITE ANT AND BORER PROOF: One of the important advantages you will obtain by using Hardie's "FIBROLITE" Asbestos-Cement Sheets for the external and internal walls and ceilings of your new home, is that this durable building material is proof against the ravages of white ants and borers.

"FIBROLITE" is also proof against rodents and offers no crevices or lodging places to harbour germs or vermin, thus ensuring the most hygienic conditions.

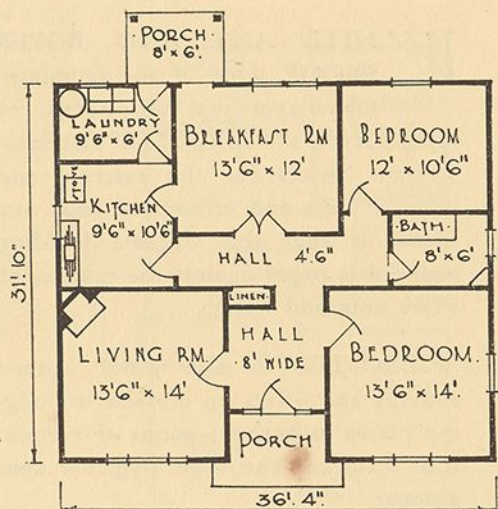
NOTE: If you like this design, submit it to your Architect and he will prepare complete plans and specifications for you. Be sure, however, to specify *Hardie's Genuine "FIBROLITE"* Asbestos-Cement Sheets for external and internal walls and ceilings and "FIBROLITE" Tiles for roofing.



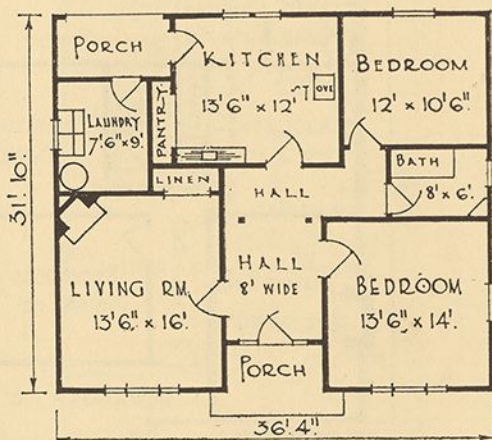


"FIBROLITE" (Fibro-Cement) DWELLING

DESIGN No. 114 420



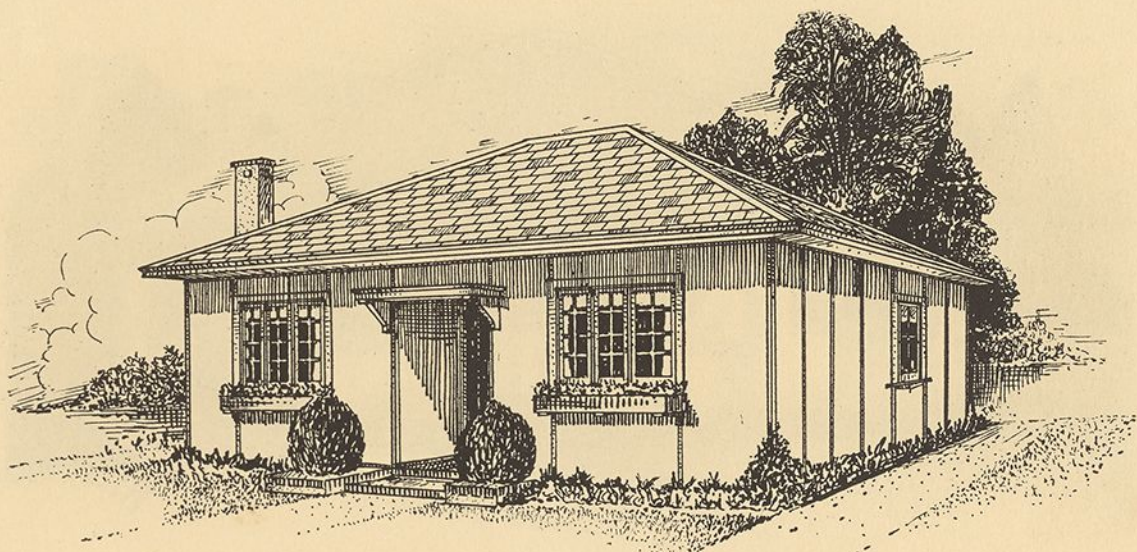
No. 114A



No. 114B

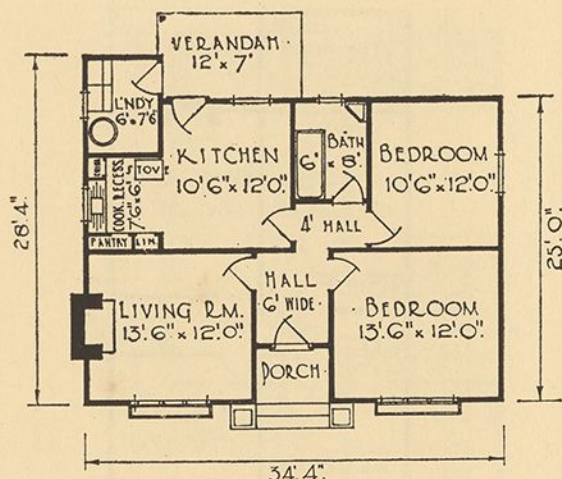


GOVERNMENT LOANS, ON EASY TERMS, ARE OBTAINABLE FROM THE RURAL BANK OF N.S.W. FOR BUILDING "FIBROLITE" HOMES.



“FIBROLITE” (Fibro-Cement) DWELLING

DESIGN No. 115 350

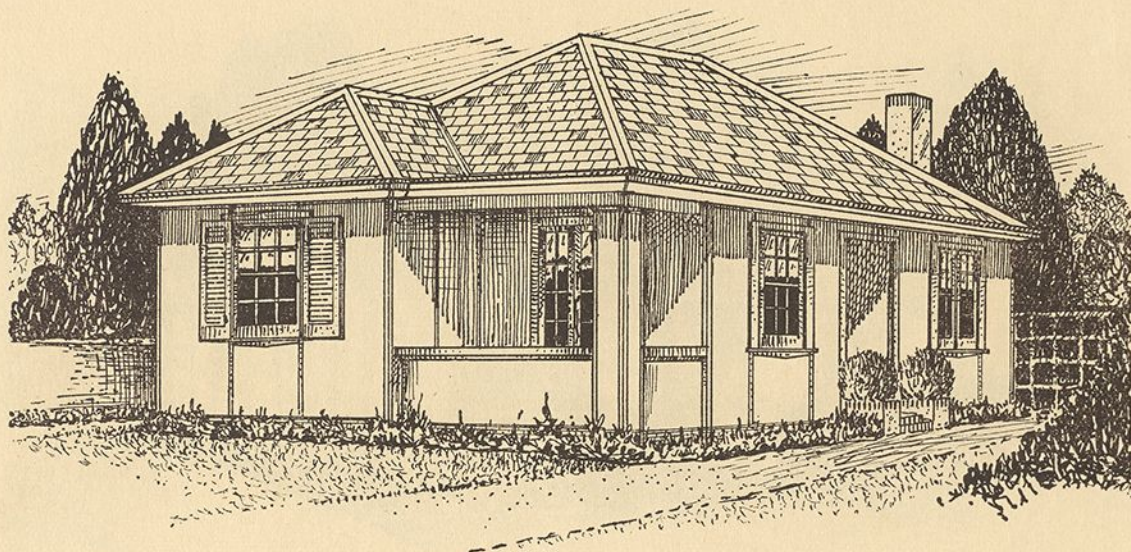


PROOF AGAINST ROT, RUST AND CORROSION: Unlike fibrous plaster sheets, paper-pulp wallboards and many other lining materials, Hardie's Genuine “FIBROLITE” contains absolutely no vegetable matter to rot or corrode. It is for this reason “FIBROLITE” is unaffected by conditions of dampness so ruinous to walls and ceilings lined with plaster, paper pulp, and metal lining materials.

GOVERNMENT LOANS, ON EASY TERMS, ARE OBTAINABLE FROM THE RURAL BANK OF N.S.W. FOR BUILDING “FIBROLITE” HOMES.

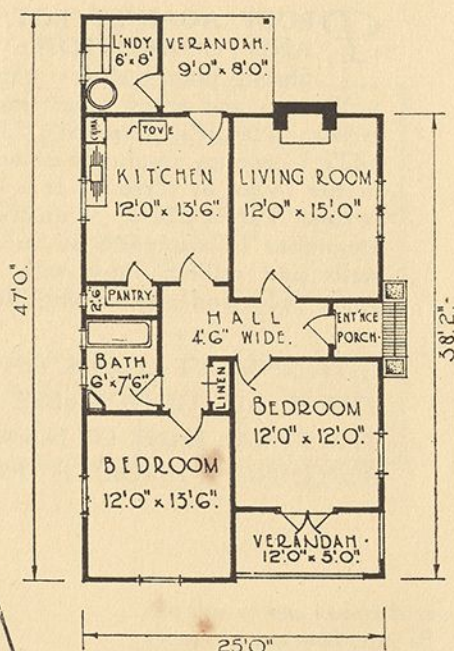
NOTE: If you like this design, submit it to your Architect and he will prepare complete plans and specifications for you. Be sure, however, to specify Hardie's Genuine “FIBROLITE” Asbestos-Cement Sheets for external and internal walls and ceilings and “FIBROLITE” Tiles for roofing.



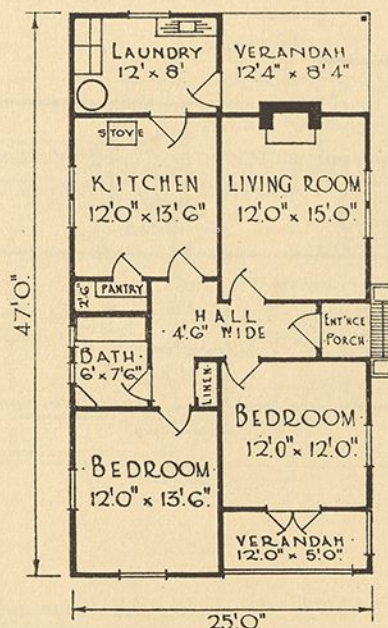


“FIBROLITE” (Fibro-Cement) DWELLING

DESIGN No. 116 420

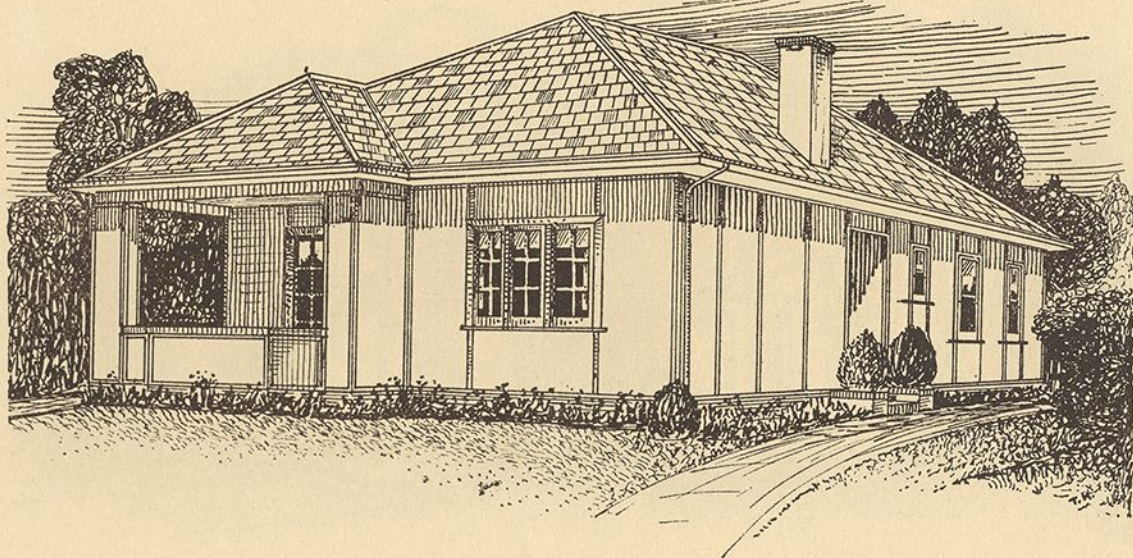


No. 116A



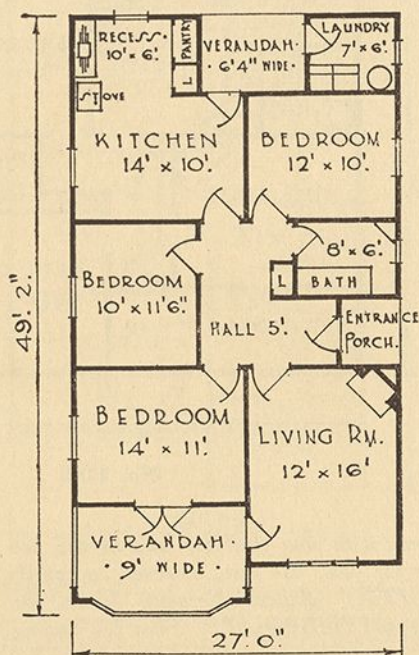
No. 116B





“FIBROLITE” (Fibro-Cement) DWELLING

DESIGN No. 117 490



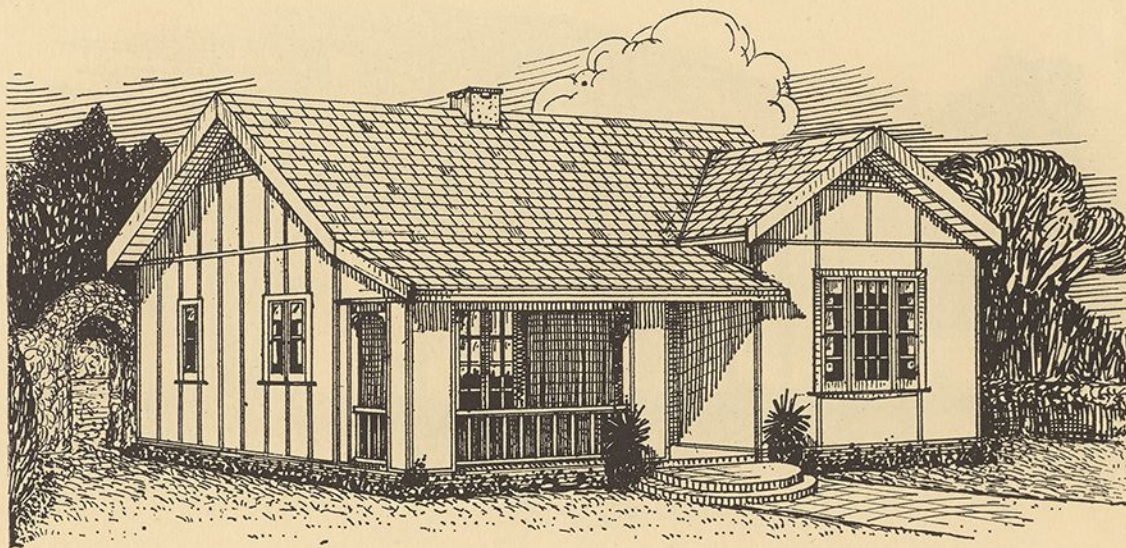
IMPROVES WITH AGE: It is a well-known fact that most building materials deteriorate with age, being affected by rot, rust, corrosion or other destructive agencies.

Not so with “FIBROLITE.”

Composed solely of indestructible Asbestos Fibre and Portland Cement, this permanent building material constantly **IMPROVES WITH AGE**, growing harder, stronger, tougher and more durable with the passing of time. Years of exposure to weather . . . summer heat . . . winter cold . . . rain . . . or even sea-air, have not the slightest effect upon its durability. By building with “FIBROLITE,” you build for **PERMANENCE**.

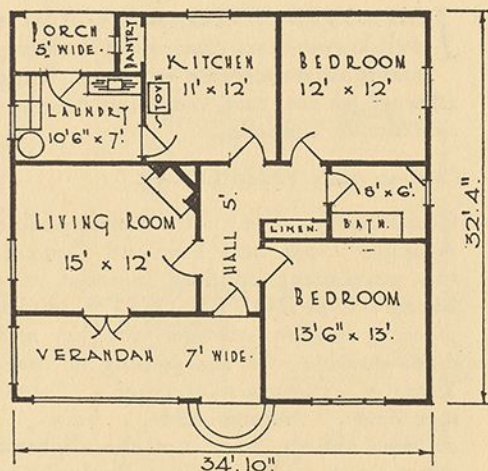
NOTE: If you like this design, submit it to your Architect and he will prepare complete plans and specifications for you.



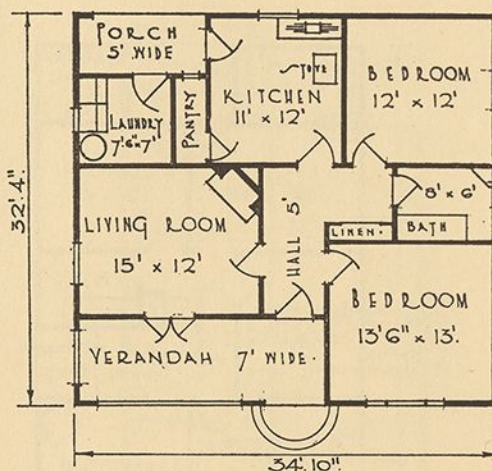


“FIBROLITE” (Fibro-Cement) DWELLING

DESIGN No. 118 402



No. 118A

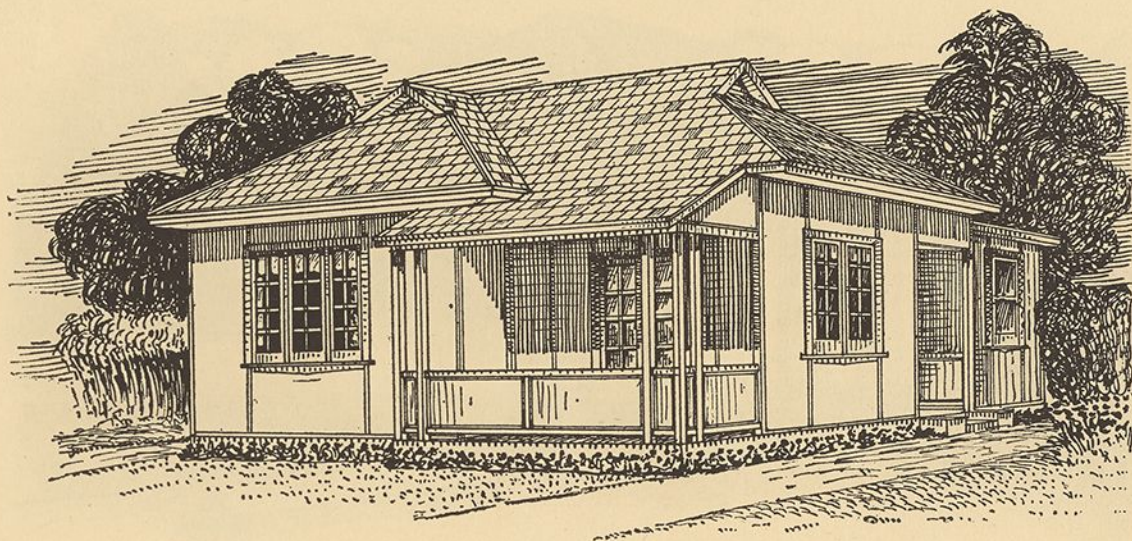


No. 118B



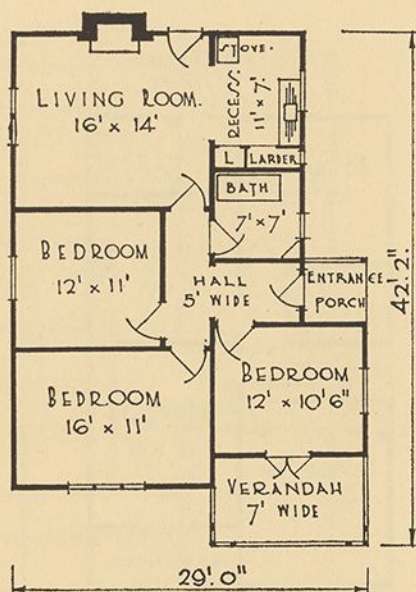
NOTE: If you like this design, submit it to your Architect and he will prepare complete plans and specifications for you. Be sure, however, to specify *Hardie's Genuine “FIBROLITE”* Asbestos-Cement Sheets for external and internal walls and ceilings and “FIBROLITE” Tiles for roofing.

GOVERNMENT LOANS, ON EASY TERMS, ARE OBTAINABLE FROM THE RURAL BANK OF N.S.W. FOR BUILDING “FIBROLITE” HOMES.



"FIBROLITE" (Fibro-Cement) DWELLING

DESIGN No. 119 400

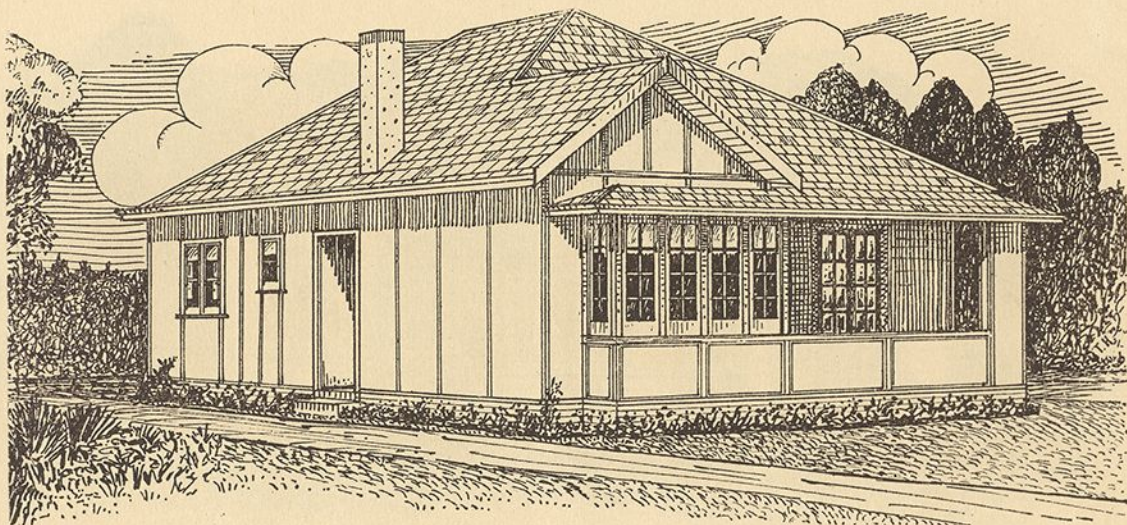


"FIBROLITE" EXTERNAL WALLS: From viewpoints of artistic appearance, fire safety, durability and economy, the most satisfactory method of treating the external walls of "FIBROLITE" dwellings is that of covering the entire area of the walls with "FIBROLITE" Asbestos-Cement Sheets and panelling same with "FIBROLITE" Cover and Angle Mouldings. If a more definite contrast in the panel treatment is preferred, wood cover battens may be used and stained or painted in any desired tone.

This treatment is shown on all the cottages illustrated in this booklet, with the exception of Design No. 121 on page 27.

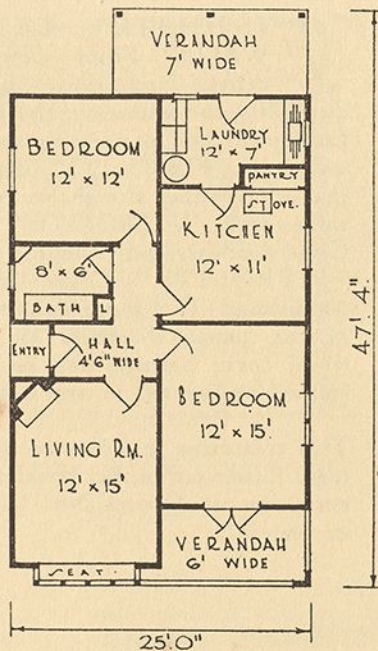
NOTE: If you like this design, submit it to your Architect and he will prepare complete plans and specifications for you. Be sure, however, to specify *Hardie's Genuine "FIBROLITE"* Asbestos-Cement Sheets for external and internal walls and ceilings and "FIBROLITE" Tiles for roofing.



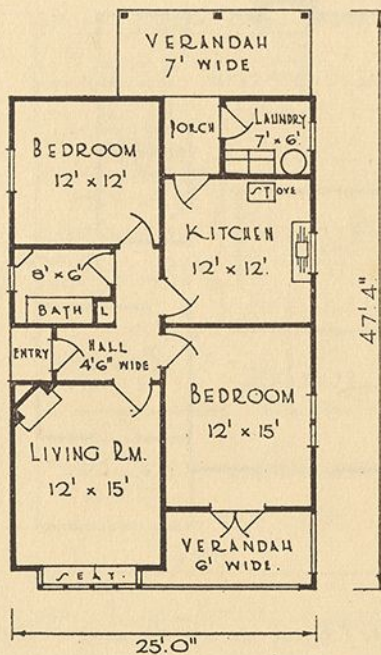


“FIBROLITE” (Fibro-Cement) DWELLING

DESIGN No. 120 *400*

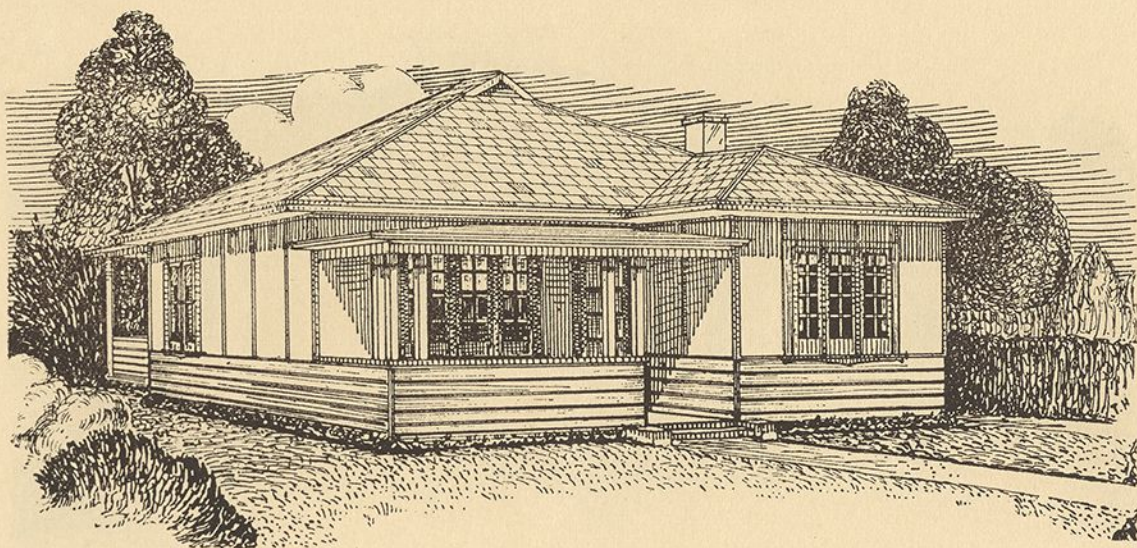


No. 120A



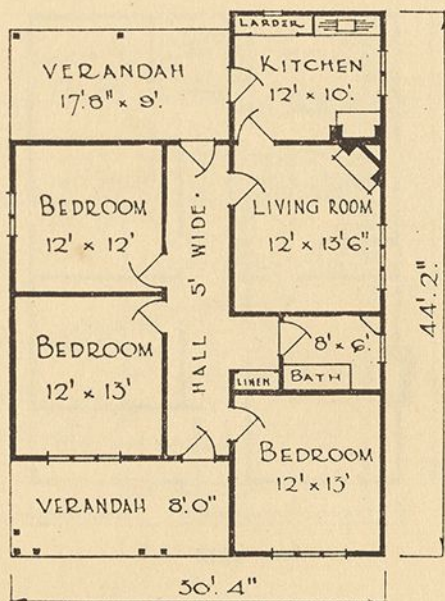
No. 120B





"FIBROLITE" (Fibro-Cement) DWELLING

DESIGN No. 121 *450*



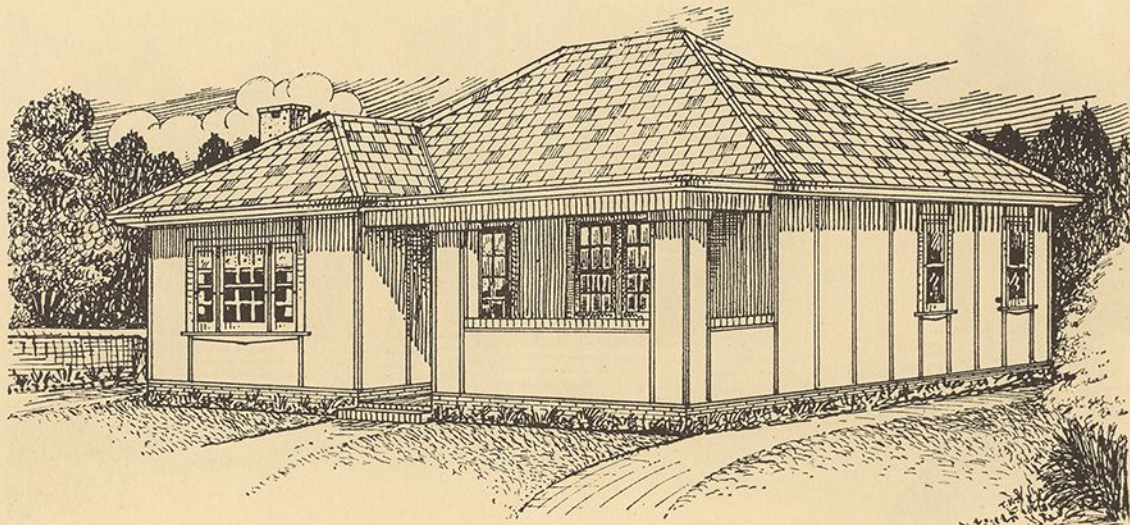
HALF-TIMBERED EFFECTS:
Another method of treating the external walls of "FIBROLITE" dwellings is that of using rusticated weatherboards to window sill height, with "FIBROLITE" Sheets above, as shown by Design No. 121. This treatment can be used for any of the cottages illustrated in this booklet.

Many picturesque effects are to be obtained with this half-timbered treatment and for this reason it is very popular.

NOTE: If you like this design, submit it to your Architect and he will prepare complete plans and specifications for you.

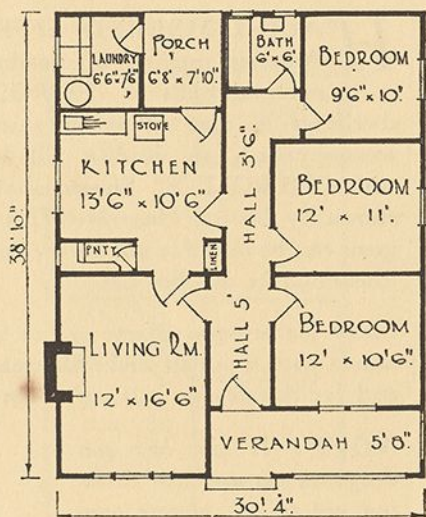
GOVERNMENT LOANS, ON EASY TERMS, ARE OBTAINABLE FROM THE RURAL BANK OF N.S.W. FOR BUILDING "FIBROLITE" HOMES.



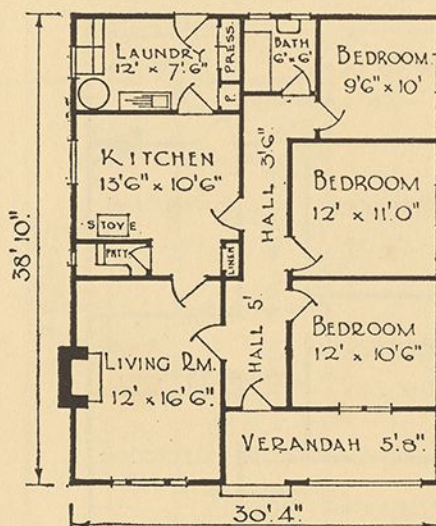


"FIBROLITE" (Fibro-Cement) DWELLING

DESIGN No. 122 *410*



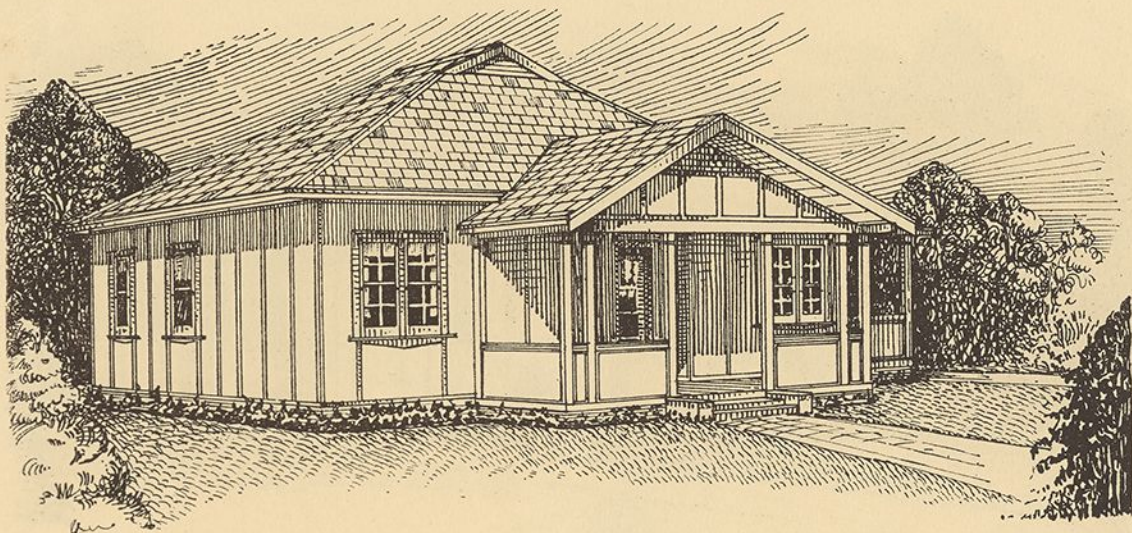
No. 122A



No. 122B

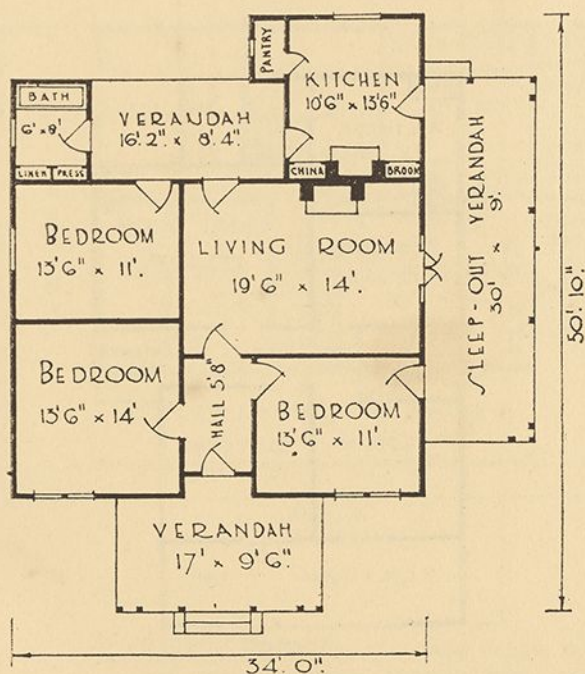


GOVERNMENT LOANS, ON EASY TERMS, ARE OBTAINABLE FROM THE RURAL BANK OF N.S.W. FOR BUILDING "FIBROLITE" HOMES.



"FIBROLITE" (Fibro-Cement) DWELLING

DESIGN No. 123 470



BEAUTIFY YOUR HOME WITH
A "FIBROLITE" TILE ROOF:

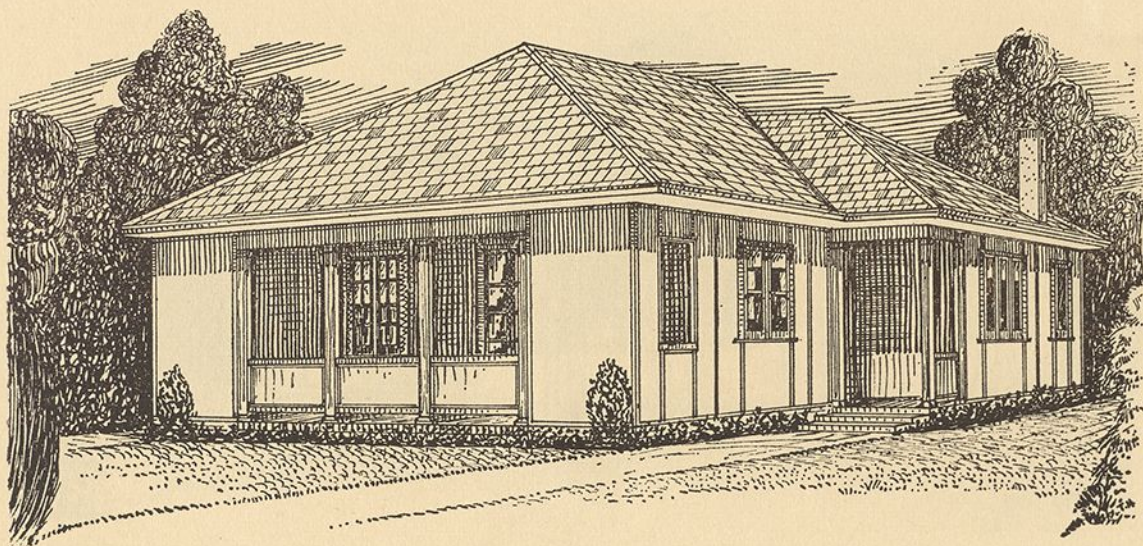
Think of the added charm and beauty one of these colourful roofs will give to your new home!

Fixed rectangularly in the same manner as natural slates and being mottled in pleasing tones, varying from a light golden russet to a deep brick-red, "FIBROLITE" Russet Tiles give a neat and charming appearance to any type of dwelling.

"FIBROLITE" Tiles are also available in colours Red, Blue-Black and Grey, in sizes for fixing rectangularly or diagonally. (See page 4.)

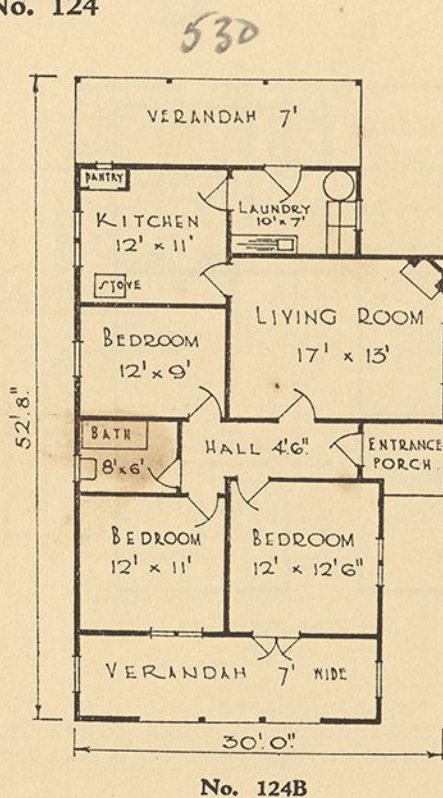
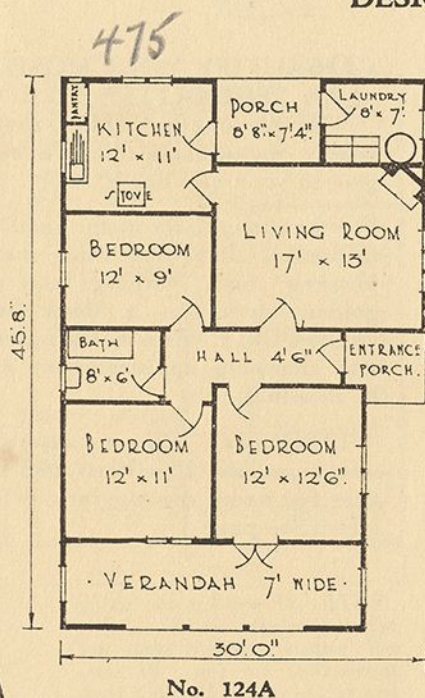
NOTE: If you like this design, submit it to your Architect and he will prepare complete plans and specifications for you. Be sure, however, to specify Hardie's Genuine "FIBROLITE" Asbestos-Cement Sheets for external and internal walls and ceilings and "FIBROLITE" Tiles for roofing.

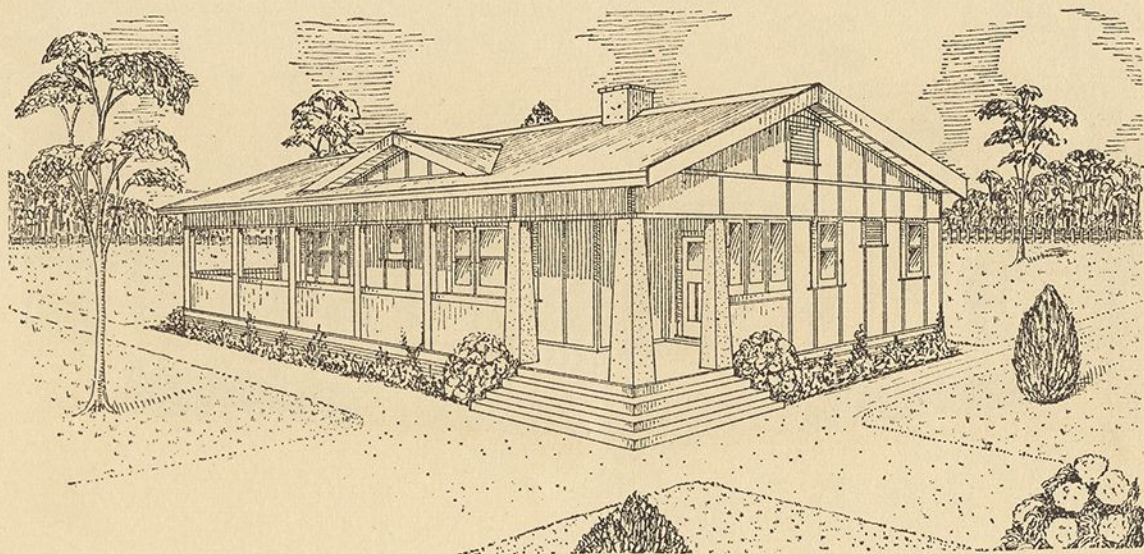




“FIBROLITE” (Fibro-Cement) DWELLING

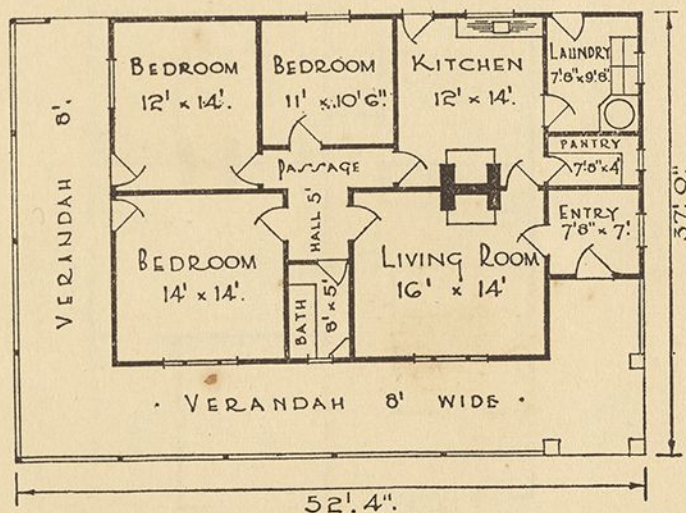
DESIGN No. 124





"FIBROLITE" (Fibro-Cement) DWELLING

DESIGN No. 125 675



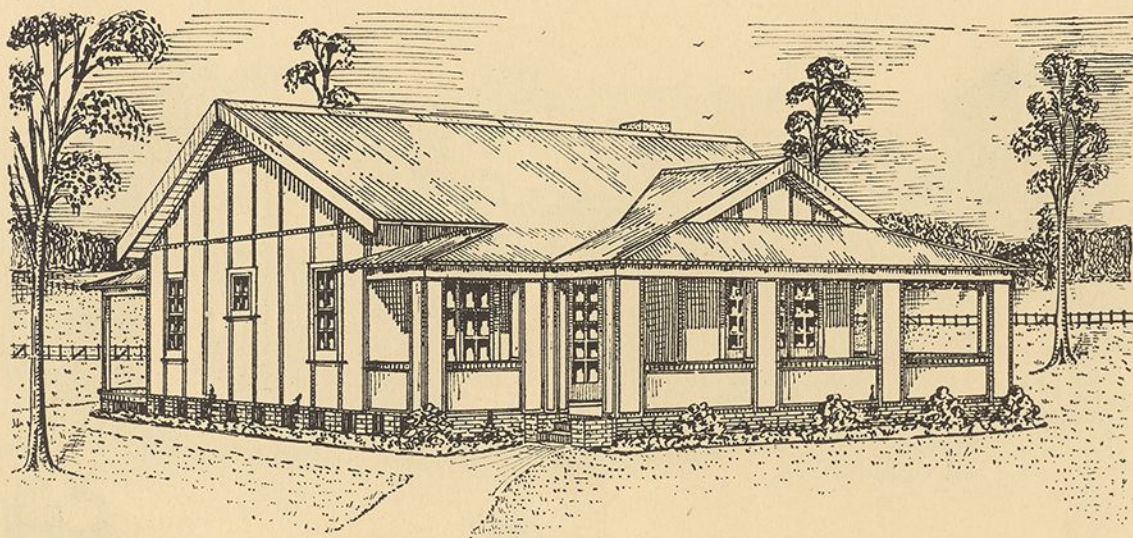
INSIST ON HARDIE'S GENUINE "FIBROLITE."

"FIBROLITE" is manufactured by the exclusive HARDIE Process, which ensures sheets of maximum strength and durability and a uniformly high standard of quality.

It is important, therefore, to clearly stipulate **HARDIE'S GENUINE "FIBROLITE"** Asbestos-Cement Sheets when specifying the materials for external and internal walls, ceilings, partitions, gable-ends, eaves-linings, etc.

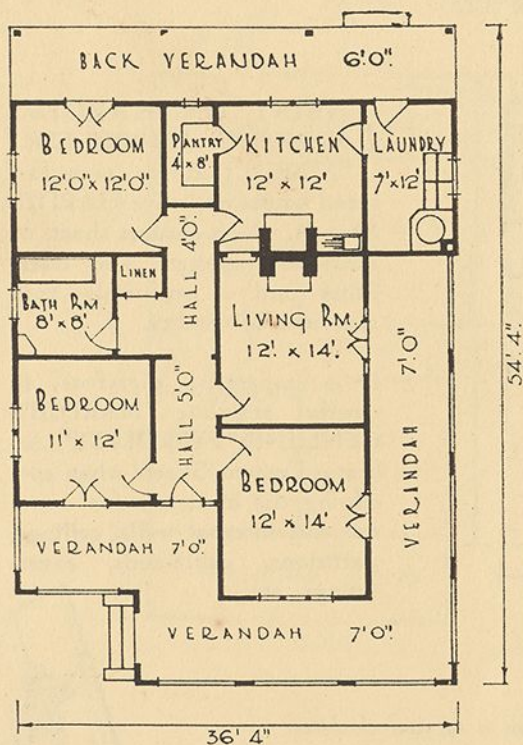
NOTE: If you like the above design, submit it to your Architect and he will prepare complete plans and specifications for you.



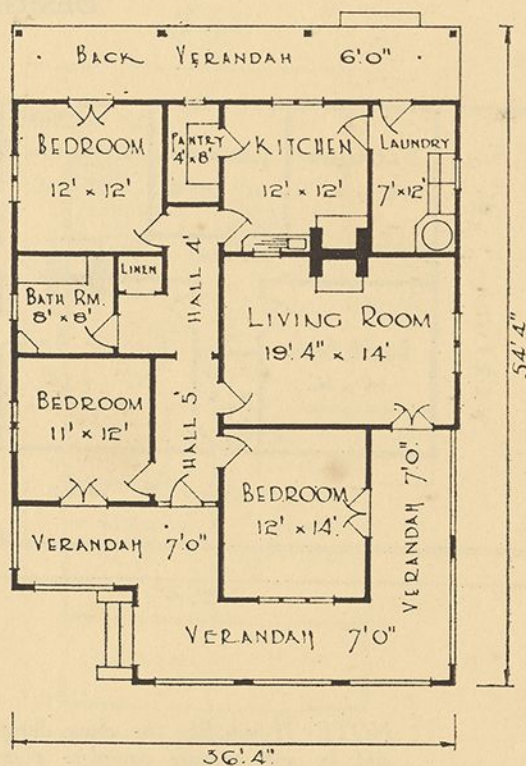


"FIBROLITE" (Fibro-Cement) DWELLING

DESIGN No. 126 700



No. 126A



No. 126B

Note « « «

WE do not build "FIBROLITE" Homes or undertake any building construction work.

Any builder in your district will give you an estimate for a "FIBROLITE" Home - - built to your plans and specification.

JAMES HARDIE & COY. LTD.

Fibrolite

ASBESTOS - CEMENT PRODUCTS

For Walls, Ceilings, etc:

- "FIBROLITE" Asbestos-Cement Flat Sheets
- "FIBROLITE" Cover and Angle Mouldings
- "FIBROLITE" Eaves Mouldings
- "FIBROLITE" Ventilators
- "TILUX" Marble-finished Wall Panels

For Roofing:

- "FIBROLITE" Asbestos-Cement Tiles
- "FIBROLITE" Corrugated Sheets
- "FIBROLITE" Guttering and Downpipes
- "FIBROLITE" Ridge Cappings
- "FIBROLITE" Skylights
- "FIBROLITE" Roof Ventilators
- "TUSKAN" Tiles

Miscellaneous:

- "FIBROLITE" Louvre Blades
- "FIBROLITE" Barge Mouldings
- "FIBROLITE" High-pressure Water Pipes
- "FIBROLITE" Conduits for Electric Mains
- "FIBROLITE" Electrical Sundries
- "VELOBLAC" School Blackboards

JAMES HARDIE & COY. LTD.

Sydney, Newcastle, Brisbane, Melbourne, Perth
and Wellington, N.Z.

10 - 1/10/34