



---

## Wunderlich deep corrugated Durabestos for roofing and wall siding

AUTHOR(S)

Wunderlich Limited

PUBLICATION DATE

01-01-1938

HANDLE

[10536/DRO/DU:30122296](#)

Downloaded from Deakin University's Figshare repository

Deakin University CRICOS Provider Code: 00113B



**WUNDERLICH**

**DEEP CORRUGATED  
DURABESTOS**

**FOR ROOFING AND WALL SIDING**

**WUNDERLICH LIMITED, MANUFACTURERS.**



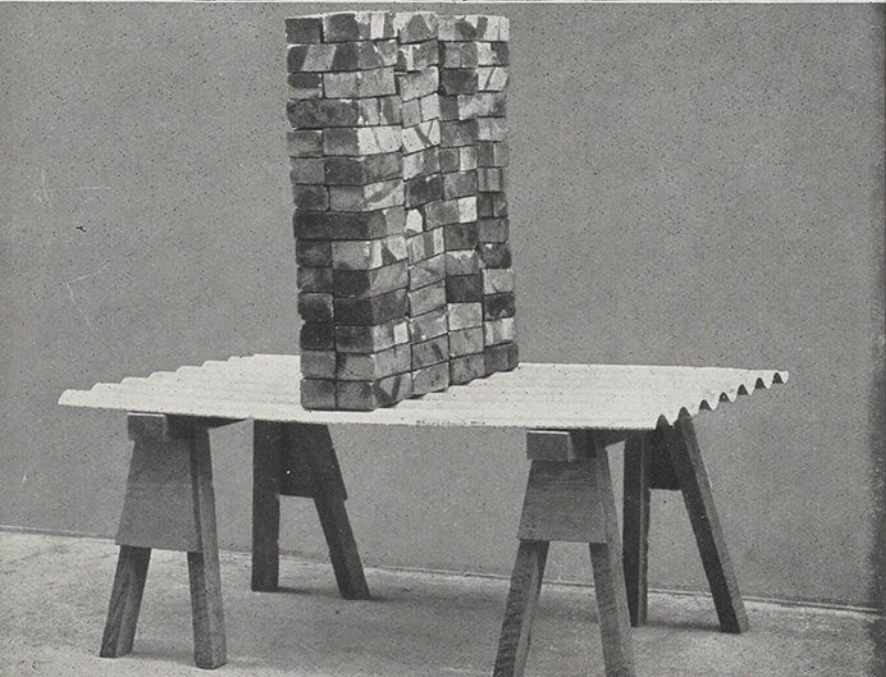


# THE IDEAL ROOFING for all types of INDUSTRIAL BUILDINGS

WUNDERLICH DEEP CORRUGATED DURABESTOS is fixed with either a 7" (one and a half corrugations) or a 2" side lap. The mitred corners are cut with a hand saw by the fixers to suit the end lap adopted.



Fixing DURABESTOS TWO-PIECE ADJUSTABLE FLUTED RIDGE CAPPING. Durabestos Ridge Cappings are also made Two-piece Adjustable—Plain Apron, and One-piece, fixed angle; the latter to any degree of pitch.



WUNDERLICH DEEP CORRUGATED DURABESTOS is STRONG. The illustration shows a 6' sheet placed on two trestles at 4' centres and loaded on the centre line with 10 cwt. of bricks. This test demonstrates that the sheets can carry a load considerably in excess of that usually demanded in this type of roofing.



691.0994  
Wunder  
Dur 1016

821am

# WUNDERLICH

## DEEP CORRUGATED DURABESTOS

(ASBESTOS-CEMENT)

## INDUSTRIAL ROOFING AND WALL SIDING

A PRODUCT OF WUNDERLICH LIMITED  
MANUFACTURERS OF ASBESTOS-CEMENT SINCE 1918

This book illustrates some of the many Deep Corrugated Durabestos Roofing treatments recently completed in Australasia. In addition, it presents in a handy form complete technical data to assist in the intelligent application of the materials to roofs and walls.

Roofing and Wall Siding materials for Industrial Buildings must possess outstanding characteristics. Apart from their primary purpose of shielding the structure from the weather, they must be also capable of resisting the various corroding gases, fumes, etc., common to industry and the disintegrating influences of the atmosphere such as salt-laden air. Only a perfectly constituted material will stand up to these conditions.

WUNDERLICH DEEP CORRUGATED DURABESTOS SHEETING has for its constituents two pre-eminently indestructible materials—ASBESTOS FIBRE and PORTLAND CEMENT. During manufacture the cement-coated asbestos fibres are interlaced and built up in laminations into a sheet of the requisite thickness—the subsequent corrugating of the material adds substantially to its strength. The 5.75" pitch has been adopted after extensive research as that which gives the greatest structural strength to an asbestos cement sheet  $\frac{1}{4}$ " thick. Furthermore, the pressing of the corrugations to a large radius does not distend or tear the fibres at the outside curves during manufacture.

Thus WUNDERLICH DEEP CORRUGATED DURABESTOS SHEETING is strong and possesses no inherent or latent weakness. The illustration on the previous page, showing its weight-bearing capacity, will convince that it may be used on a roof with perfect safety with purlins spaced 4' apart. It permits the use of long sheets, resulting in a minimum of end laps, less handling and fixing and a more economical roof construction. The deep corrugations ensure a quick run off for rain water and minimise the possibility of driving rain entering through the laps to the underside of the sheets; their boldness adds appreciably to the appearance of the completed roof.

The moulded Durabestos Ridge Capping, Eaves and Box Gutters, Barge Moulds, Downpipes, Roof Ventilators, Skylights, etc., have received the same exhaustive consideration both as regards structural and artistic design, workability and manufacture. Thus good appearance, perfect fitting and a thoroughly permanent and weather-tight treatment are all assured.

Wunderlich Limited place at the disposal of Architects, Engineers and Builders the services of their Roofing Technicians, who will gladly discuss the problems arising in the designing of any roof or siding structure. They also maintain a staff of workmen who are skilled in the proper application of the material, thus ensuring correct fixing and adherence to specification.

## WUNDERLICH LIMITED

MANUFACTURERS OF BUILDING MATERIALS OF QUALITY

ADMINISTRATION: Baptist Street, Redfern, Sydney

DURABESTOS WORKS: Cabarita (N.S.W.), Sunshine (Vic.) and Gaythorne (Q'ld.)

SHOWROOMS AND OFFICES:

SYDNEY:

Baptist Street, Redfern

STH. MELBOURNE

210 Hanna St. (near Sturt St.)

ADELAIDE:

Cnr. Grote & Morphett Sts.

BRISBANE

Amelia Street, Valley

NEWCASTLE:

King Street (near Watt Street)

PERTH:

Lord & Short Streets

HOBART:

T. & G. Buildings  
Collins & Murray Sts.

LAUNCESTON:

71 St. John's Street



# WUNDERLICH DEEP CORRUGATED DURABESTOS

---



DEEP CORRUGATED DURABESTOS ROOFING to the 150th ANNIVERSARY COMMEMORATION PAVILION, Royal Agricultural Society's Showgrounds, Sydney.  
Area: 44,500 sq. ft.  
Architects: Trenchard, Smith & Maisey.  
Builders: Stuart Bros. Pty. Ltd.



DEEP CORRUGATED DURABESTOS ROOFING to the Southern Can Company's new building, West Footscray, Victoria.  
Area: 85,000 sq. ft.  
Architects: Oakley & Parkes.  
Contractors: Hansen & Yuncken.

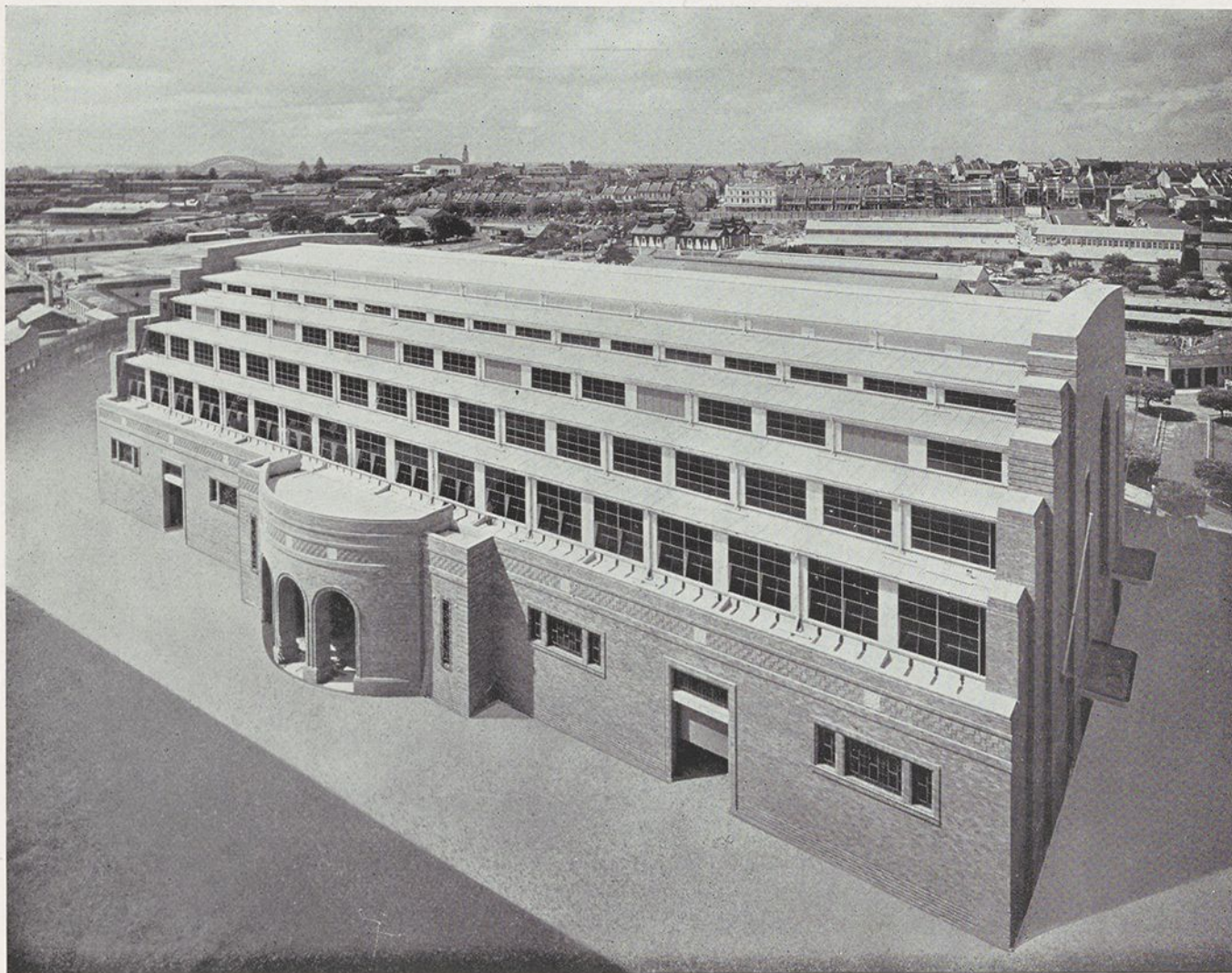
---

DEEP CORRUGATED DURABESTOS IS THE IDEAL ROOFING FOR INDUSTRIAL BUILDINGS



# ASBESTOS-CEMENT ROOFING AND WALL SIDING

---



DEEP CORRUGATED DURABESTOS ROOFING to the Manufacturers' Pavilion, Royal Agricultural Society's Showgrounds, Sydney. Area: 44,100 sq. ft.

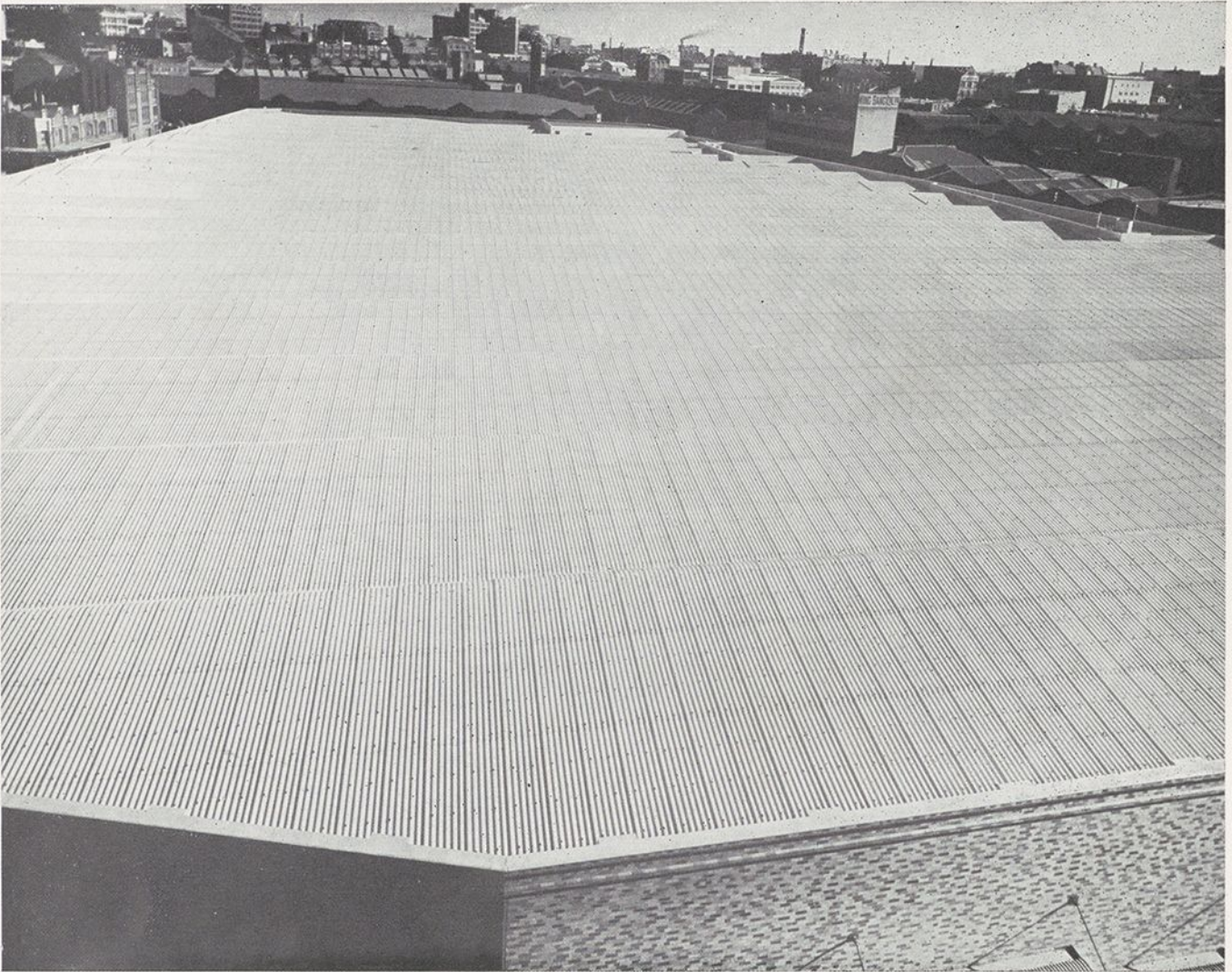
Architects: Trenchard, Smith & Maisey.  
Builders: Stuart Bros. Pty. Ltd.

---

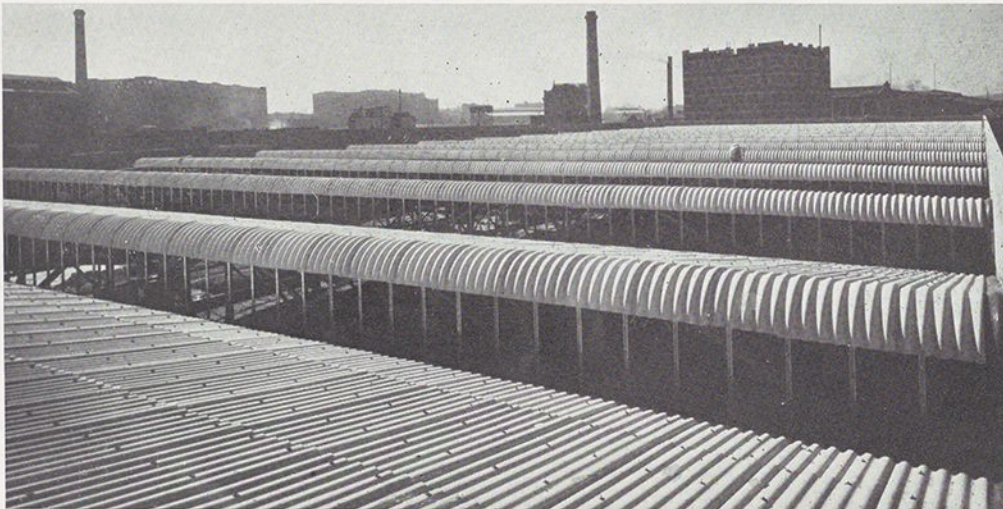
THE 5.75" PITCH IMPARTS MAXIMUM STRENGTH AND RIGIDITY TO DEEP CORRUGATED DURABESTOS SHEETS



# WUNDERLICH DEEP CORRUGATED DURABESTOS



WUNDERLICH DEEP CORRUGATED DURABESTOS ROOFING to the New Vegetable Markets, Sydney.  
Area: 201,300 sq. ft. The Sydney City Architect. Builders: Lipscomb & Price.



A view taken from the opposite end of the New Vegetable Markets' Building, showing the Saw Tooth Type of Roof Construction.

DEEP CORRUGATED DURABESTOS IS FIRE-RESISTING AND CANNOT MELT, WARP OR BUCKLE



# ASBESTOS-CEMENT ROOFING AND WALL SIDING

---



WUNDERLICH DEEP CORRUGATED DURABESTOS roof to the Fruit Markets, Melbourne, Victoria.  
Area: 60,000 sq. ft.

The Melbourne City Architect.  
Builders: J. S. Taylor & Sons Pty. Ltd.

---

SALT-LADEN AIR CANNOT AFFECT OR DISINTEGRATE DEEP CORRUGATED DURABESTOS



# WUNDERLICH DEEP CORRUGATED DURABESTOS



WUNDERLICH CURVED DEEP CORRUGATED DURABESTOS ROOFING to Messrs. BATES (AUST.) LIMITED FACTORY AT ROSEBERY, N.S.W. The Durabestos Sheets are curved to the contour of the Patent (S.S.) Roof Truss.  
Area: 7,800 sq. ft.

Architects: Spain & Cosh.

Engineer: Malcolm Stanley.

Builder: Robt. Wall & Sons Pty. Ltd.



WUNDERLICH DEEP CORRUGATED DURABESTOS ROOFING to the Pig Pavilion, Royal Agricultural Society's Show-ground, Sydney. The Durabestos Sheets, Skylights and Roof Slope Bases are curved to the contour of the Patent (S.S.) Roof Truss.

Area: 42,000 sq. ft.

Architects: Trenchard, Smith & Maisey.

Engineer: Malcolm Stanley.

DEEP CORRUGATED DURABESTOS IS ECONOMICAL IN INITIAL COST AND IN APPLICATION



# ASBESTOS-CEMENT ROOFING AND WALL SIDING

---



WUNDERLICH DEEP CORRUGATED DURABESTOS roof at the Australian Paper Mills, Fairfield, Victoria.  
Area: 40,000 sq. ft. Builders: Weavell & Keast.



Another view of the roof to the Australian Paper Mills showing some of the thirty-six 16" diam. Durabestos Roof Ventilators. One hundred and six Durabestos Skylights were also used on this roof.

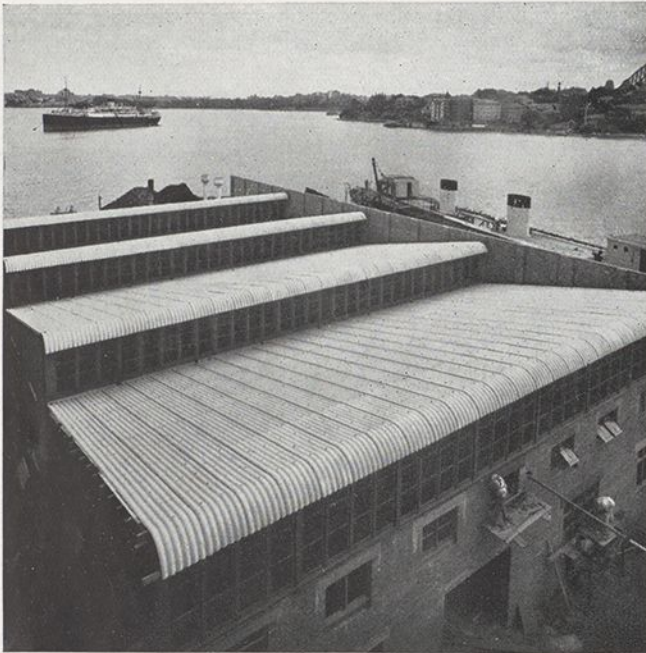
---

DEEP CORRUGATED DURABESTOS IS PERMANENT AND IMPROVES WITH AGE

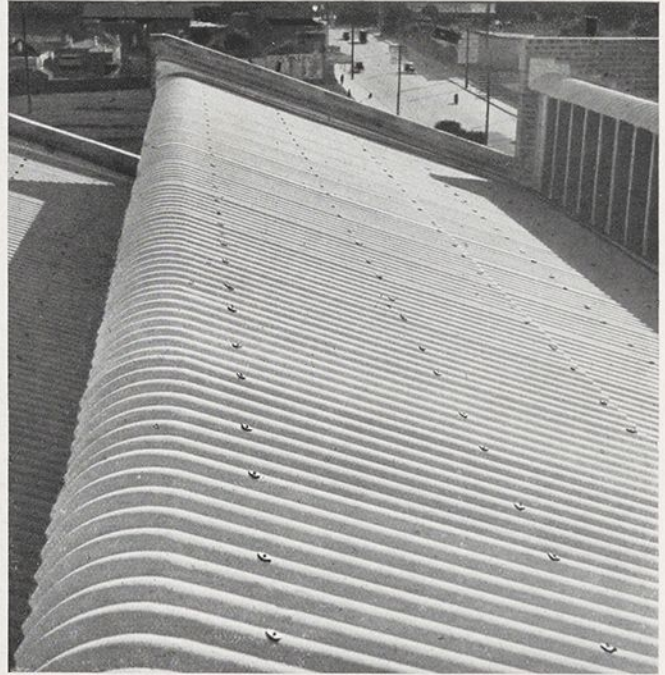


# WUNDERLICH DEEP CORRUGATED DURABESTOS

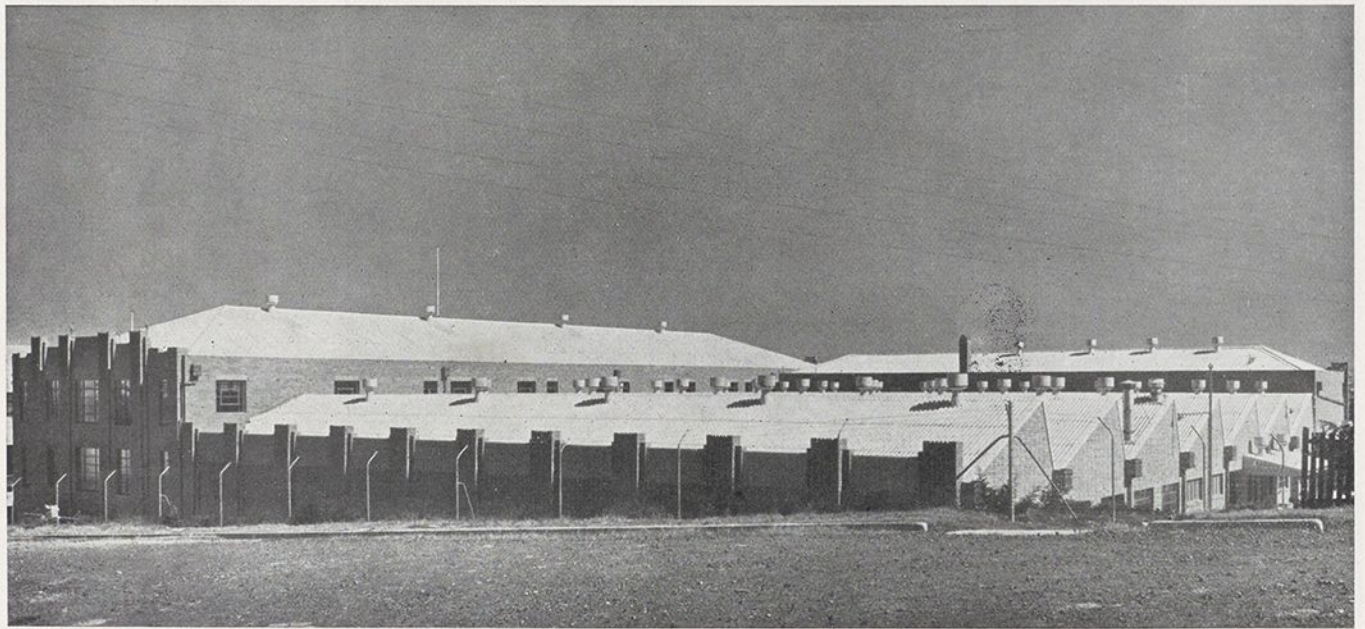
---



WUNDERLICH DEEP CORRUGATED DURABESTOS  
roof to P. J. & M. S. Co.'s workshops, Neutral Bay, Sydney.  
Area: 12,000 sq. ft.



WUNDERLICH DEEP CORRUGATED DURABESTOS  
roof to Columbia Gramophone Co. factory, Homebush,  
N.S.W.  
Area: 15,000 sq. ft. Builders: Stuart Bros.



WUNDERLICH DEEP CORRUGATED DURABESTOS roof to Rega Products Ltd., Marrickville, N.S.W.  
Area: 32,450 sq. ft. Architect: A. M. Bolot. Builders: Coleman & Kirk.

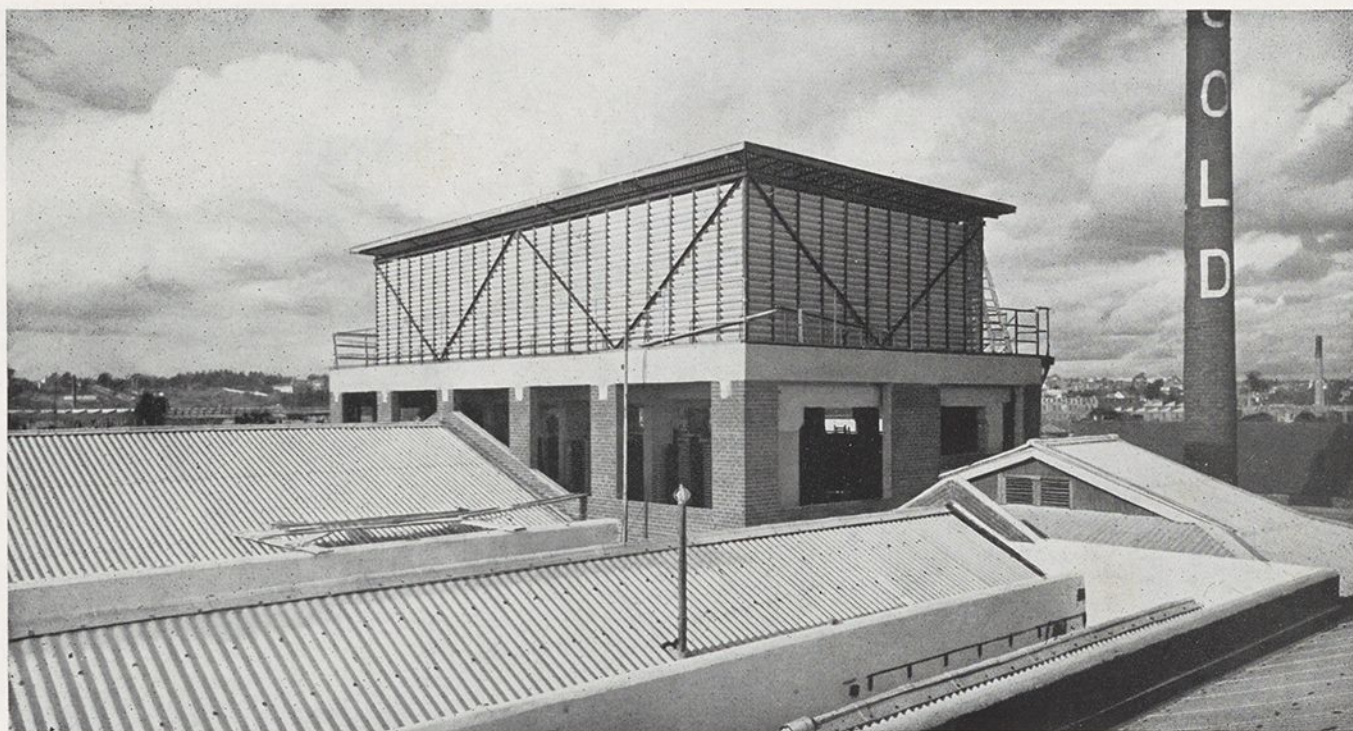
---

THE LARGE RANGE OF STOCK SIZED CORRUGATED SHEETS AVAILABLE OBVIATES WASTE

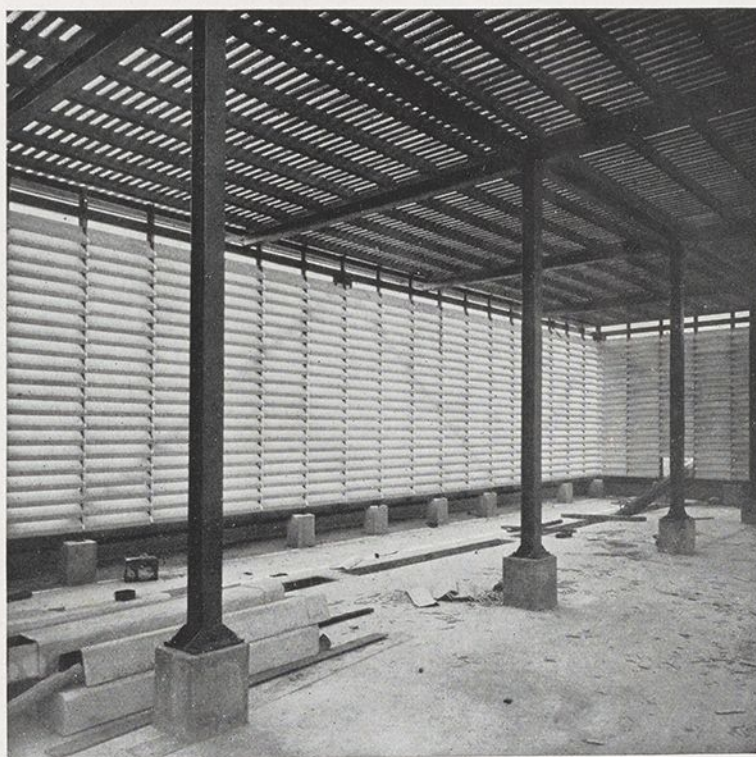


# ASBESTOS-CEMENT ROOFING AND WALL SIDING

---



WUNDERLICH DURABESTOS LOUVRE TREATMENT to the condenser room, also Deep Corrugated Roofing to Peters Ice Cream Factory, Burnley, Victoria.  
Architects: R. Wildridge & Co. (C. Gibbs in conjunction). Builders: Weavell & Keast.



Interior view of condenser room, Peters Ice Cream Factory, Burnley, Victoria, showing DURABESTOS LOUVRES.

---

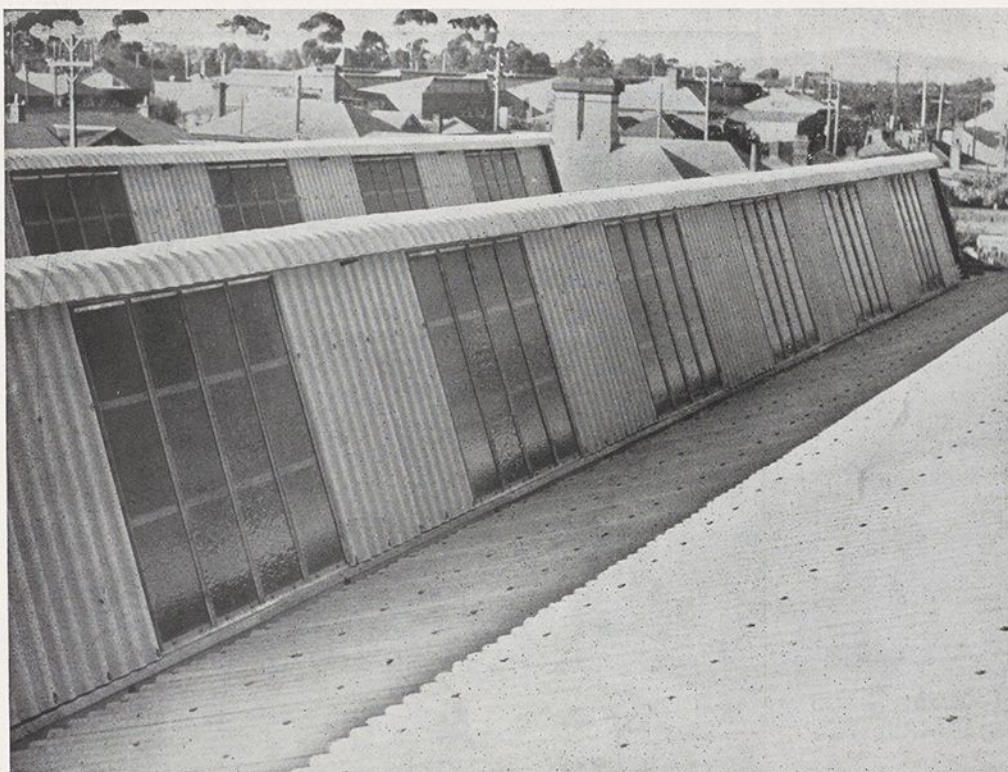
DEEP CORRUGATED DURABESTOS HAS A LOW THERMAL CONDUCTIVITY, THEREFORE IT IS COOLER THAN ANY METAL ROOF



# WUNDERLICH DEEP CORRUGATED DURABESTOS



WUNDERLICH DEEP CORRUGATED DURABESTOS roofing to Newstead Wharf Sheds, Nos. 1 and 3, Brisbane, Q'd. Area: 44,000 sq. ft. Engineers: Wm. McDonald and T. Clive Groom.

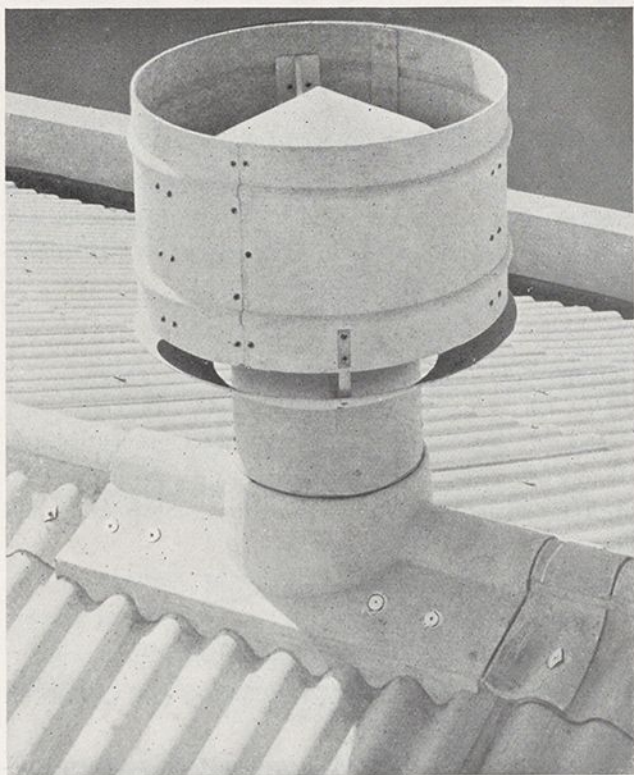


WUNDERLICH DEEP CORRUGATED DURABESTOS roof to Austral Sheet Metal Works, Adelaide, S.A. Area: 10,100 sq. ft. Architect: L. G. Golding. Builder: J. W. Chappell.

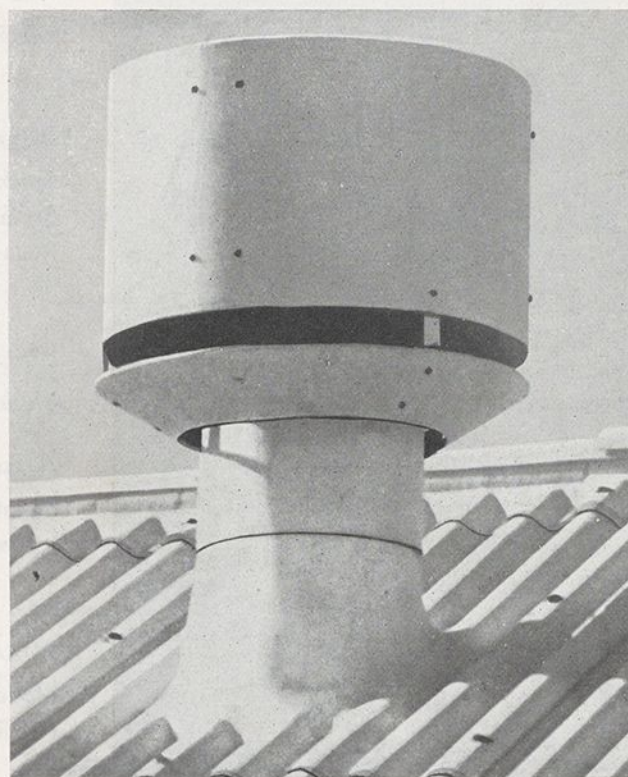
DEEP CORRUGATED DURABESTOS IS LIGHT IN WEIGHT AND ENSURES A MORE ECONOMICAL ROOF CONSTRUCTION



# WUNDERLICH DURABESTOS ROOFING

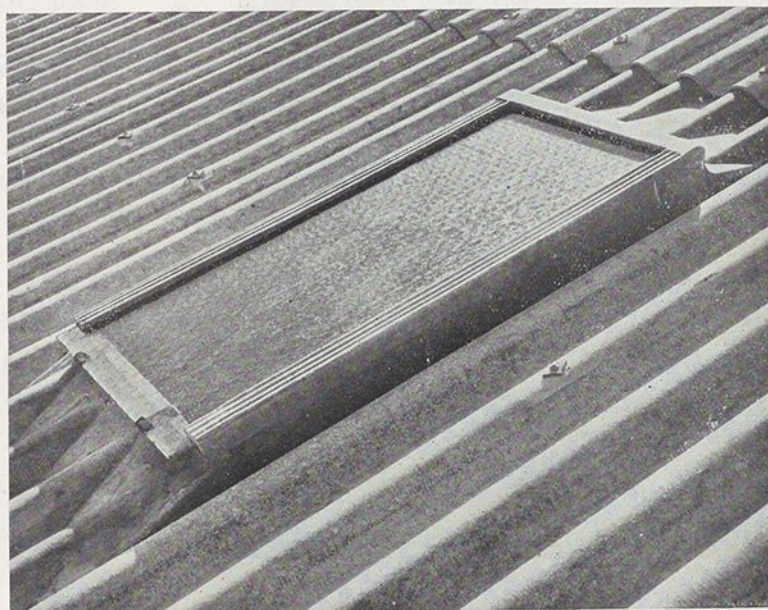


DURABESTOS VENTILATOR COMPLETE WITH RIDGE BASE. Stock sizes of Ventilators, 9", 12", 16" and 22".



DURABESTOS VENTILATOR COMPLETE WITH ROOF SLOPE BASE. Stock sizes of Ventilators, 9", 12", 16" and 22". Roof Slope Bases fixed in sheets from 6' to 10' long.

DURABESTOS SKYLIGHT. Stock sizes, daylight opening, 3' 3" x 1' 6" and 5' ■ x 1' 6", supplied fixed in Corrugated Sheets from 6' to 10' long.



CONDENSATION OF MOISTURE IS PRACTICALLY NIL UNDER A DEEP CORRUGATED DURABESTOS ROOF





# WUNDERLICH DURABESTOS

## MOULDED SUNDRIES

### DURABESTOS EAVES GUTTER:

Stock sizes: 4", 5", 6" and 8" (with separate collars, as illustrated).  
Stock lengths: 6', maximum length 8'. Available with Outlets to suit Round or Rectangular Downpipes. Stop Ends and Mitres to order.

### DURABESTOS BOX GUTTERS:

Stock size: 7½", 9", 10", 12", 13", 14", 15", 16", 17", 18", 19", 20", 21", 22", 23" and 24" by 4" (with separate collars, as illustrated).  
Depths other than 4" to order only. Stock lengths: 8'. Available with outlets to suit Rectangular or Round Downpipes. Stop Ends and Mitres to order.

### DURABESTOS SUMP OUTLET IN EAVES GUTTER:

Made to order to suit 4", 5", 6" or 8" Eaves Gutter and Outlets to suit Rectangular or Round Downpipes.

### DURABESTOS EXTERNAL RAINWATER HEAD FOR BOX GUTTER:

Stock sizes: 18" x 12", 24" x 12", 30" x 12".

### DURABESTOS RAINWATER HEAD FOR EAVES GUTTER:

Stock size: 12" x 6".

### DURABESTOS DOWNPIPE:

Rectangular or Round. Stock sizes—Rectangular: 3" x 2", 4" x 2", 4" x 3", 4" x 4", 6" x 4"; Round: 3", 4", 5" and 6" diameter.  
Stock size: 6' long (with socketed ends).  
Standard Bends, Shoes and Junctions available to suit all sizes.

### DURABESTOS SPREADERS:

Made to suit all Downpipes.  
Note removable end for cleaning purposes.

Additional information relating to Durabestos Moulded sundries is shown on the Service Sheets. See pages 18 to 34.



# WUNDERLICH DURABESTOS

## MOULDED SUNDRIES

### DURABESTOS ADAPTABLE ANGLE TWO-PIECE RIDGING—FLUTED:

Stock size: 12" x 12".

Stock lengths: For 2" side lap fixing, 3' 7½"—Cover, 3' 3½".  
For 7" side lap fixing, 3' 3"—Cover, 2' 10¼".

### DURABESTOS ADAPTABLE ANGLE TWO-PIECE RIDGING—PLAIN:

Stock size: 8" x 8", 9" x 9", 10" x 10", 12" x 12".

Stock lengths: 6 feet—fixed with a collar lap of 4".

### DURABESTOS RIDGING—Fixed Angle—One Piece:

Stock size: 8" x 8", 9" x 9", 10" x 10", 12" x 12".

Stock lengths: 6 feet and 8 feet.

Made to order to desired angle—fixed with a collar lap of 4".

### DURABESTOS SAWTOOTH RIDGING—(Not illustrated):

Stock size: 12" (fluted), 9" (plain).

Stock lengths: For 2" side lap fixing, 3' 7½"—Cover, 3' 4".

For 7" side lap fixing, 3' 3"—Cover, 2' 10¼".

Made to order to any desired angle.

GABLE ENDS, HIP STARTERS and APEX PIECES available to suit all ridge cappings.

### DURABESTOS FLUTED APRON OR GUTTER FLASHING:

Stock sizes: 6" x 2", 9" x 2", 9" x 3", 9" x 4", 9" x 5", 9" x 6".

Stock lengths: For 2" side lap fixing, 3' 7½"—Cover, 3' 4".

For 7" side lap fixing, 3' 3"—Cover, 2' 10¼".

Also available with rolled apron to suit any pitch.

### DURABESTOS EAVES BIRDPROOFING:

Flat Type Serrated Edge (for fixing to timber).

Stock size: 6" wide.

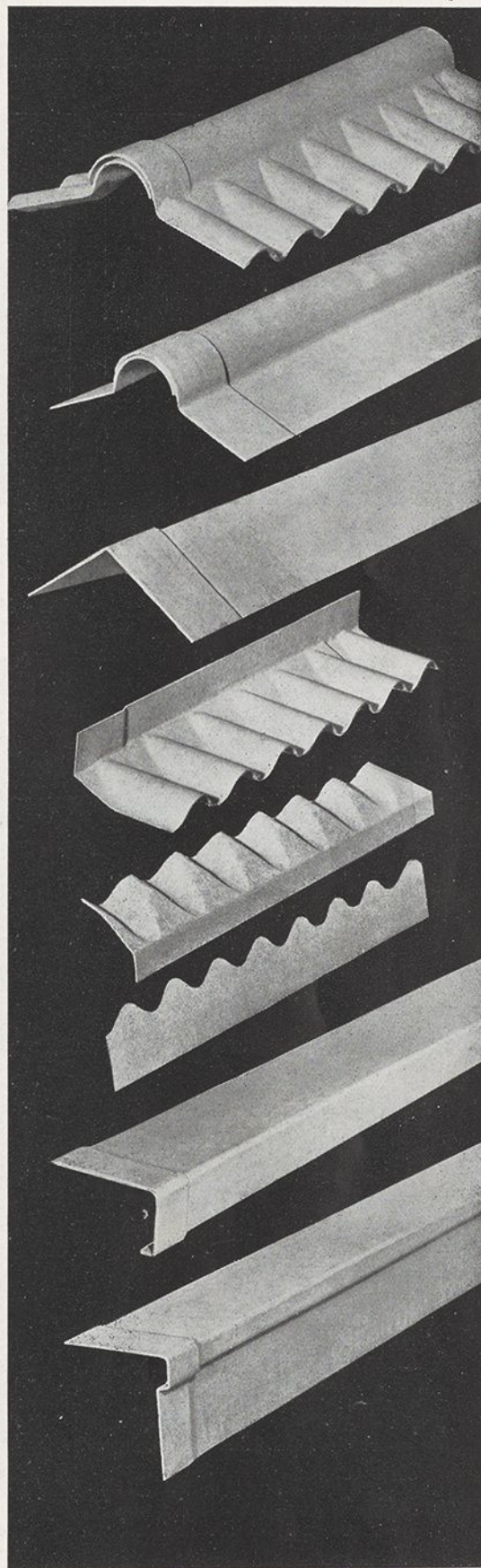
Stock lengths: 3' 9¾".

### DURABESTOS BARGE MOULD:

Stock sizes: 9" x 8" x 1", 9" x 2" x 1", 9" x 4" x 1".

Stock lengths: 6' and 8'—fixed with a collar lap of 4".

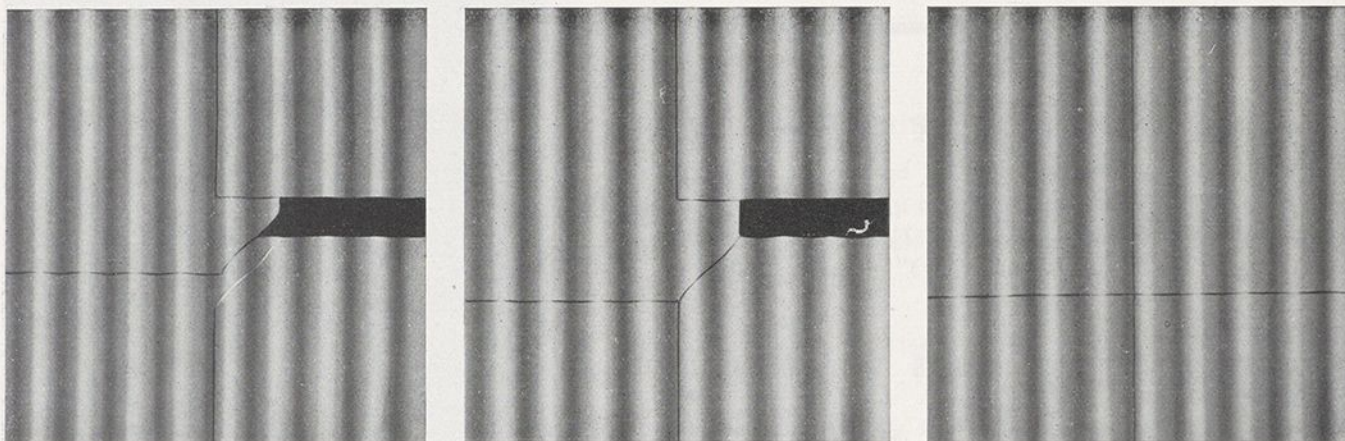
Additional information relating to Durabestos Moulded Sundries is shown on the Service Sheets—See pages 18 to 34.



IT IS NOT NECESSARY TO PAINT DEEP CORRUGATED DURABESTOS—THE COLOUR IS A PLEASING GREY WHITE

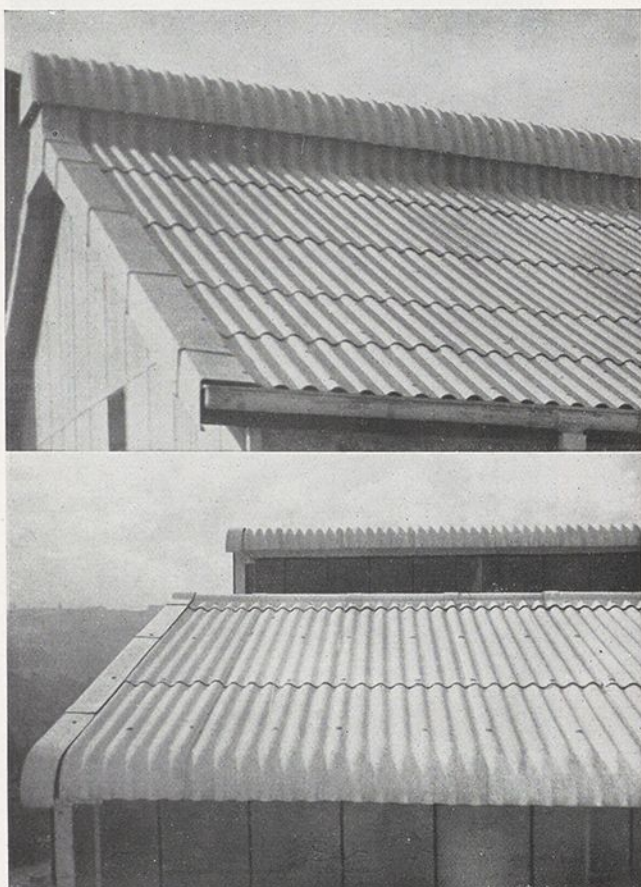


# WUNDERLICH DEEP CORRUGATED DURABESTOS



Method of fixing WUNDERLICH DEEP CORRUGATED DURABESTOS SHEETS, showing mitre joint (left to right 7" side lap fixing).

For further particulars see service sheets 5103/4 and 5104/5. Pages 20 and 21.



DURABESTOS CURVED CORRUGATED SHEETS.

Above: Showing application in the form of a Ventilating Ridge.

Below: Showing application to a Gable Roof, also to a Sawtooth Roof.



DURABESTOS BARGE MOULDS provide an attractive and weather-tight treatment to gable ends.

For full particulars see service sheet No. 5112/13.

DEEP CORRUGATED DURABESTOS MINIMISES THE TRANSMISSION OF NOISE FROM RAIN OR HAIL



# WUNDERLICH CORRUGATED DURABESTOS

(5.75" Pitch)

Wunderlich Deep Corrugated Durabestos is composed of Asbestos Fibre and Portland Cement. These components, properly mixed and united, result in a corrugated sheet of unique physical properties, pleasing grey white appearance, and permanence.

## QUALITIES OF WUNDERLICH DEEP CORRUGATED DURABESTOS:

STRONG: Scientifically made from two indestructible materials, Asbestos Fibre and Portland Cement. Laminated process of manufacture increases natural inherent strength of components. 5.75" pitch corrugations give high structural strength and maximum rigidity to sheets, thus permitting greater purlin spacing with resultant structural economies.

FIRE-RESISTING: Non-combustible; highly resistant to fire; will not melt, warp, or buckle.

WEATHERPROOF: Unaffected by the elements, water, air or sudden temperature changes. Dense, impenetrable; low moisture absorption. Does not contaminate rain water for drinking purposes.

CORROSION: Will not corrode, rot or rust under normal conditions. SALT AIR will not affect or disintegrate.

CONDENSATION: Condensation of moisture under normal conditions practically nil.

SOUND AND HEAT: Minimises transmission of noise from rain and hail, and heat from sun. Low thermal conductivity—cooler than any metal roof.

DUST PROOF: When side and end laps are bedded on a special Asbestos-Bitumen compound the roof is sealed against the entry of dust.

(Victorian Factory Regulations do not require the roofs of factories—employing female labour—to be underlined if Corrugated Durabestos is used as a roofing, but insist that all iron roofs be expensively underlined.)

PERMANENT: Exceptionally long life of material, which becomes stronger and improves with age.

MAINTENANCE: Once erected needs scarcely any attention; no upkeep costs, no replacement of sheets.

PAINTING UNNECESSARY: No need to paint sheets as natural colour is a pleasing grey white.

ECONOMY: Initial cost of material and application is low. May be used on a roof with perfect safety even when purlins are spaced 4' apart. Available in a range of convenient stock sizes that obviates waste. Freight by both rail and steamer comparatively low.

WEIGHT: Light weight of material ensures a more economical Roof Structure. When fixed, 100 square feet of sheeting weighs 316 lbs. (side lapped 2") or 360 lbs. (side lapped 7").

WORKABILITY: Corrugated Durabestos Sheets are easily cut with a hand saw, and easily drilled for screws or bolts. Country builders will experience no difficulty when fixing providing the instructions shown on service sheets are followed.

USES: Ideal for roofing and wall siding, also partitions in steel frame industrial type building, viz.: Warehouses, Factories, Wharf Sheds, Power Stations, Industrial Works, Pavilions, Theatres, Engine Houses, Hangars, Garages, also Farm Buildings, Silos, Packing Sheds, Shearing Sheds, etc.

SHEET No. 1

SERVICE SHEET No. 5100

CORRUGATED DURABESTOS

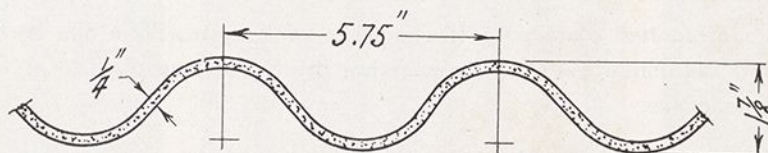
WUNDERLICH LIMITED

SHOWROOMS  
SYDNEY, NEWCASTLE, MELBOURNE,  
ADELAIDE, PERTH, BRISBANE,  
HOBART, LAUNCESTON



# WUNDERLICH CORRUGATED DURABESTOS

5.75" Pitch — Side Lapped 2"



THICKNESS —  $\frac{1}{4}$ " (Nominal)

DEPTH —  $1\frac{7}{8}$ " "

WIDTH —  $3' 5\frac{1}{4}"$  "

EFFECTIVE COVER —  $3' 3\frac{1}{2}"$  "

(For 2" Side Lap)

SIDE LAP — 2" as shown, or

7" (see Sheet No. 3)

END LAP — For Roofing 6" or more

depending on position

and pitch of roof

— For Siding 4"

MINIMUM PITCH FOR END LAP OF 6" — 20 degrees

MINIMUM PITCH FOR END LAP OF 9" —  $12\frac{1}{2}$  degrees

(Under  $12\frac{1}{2}$  degrees use 12" end lap—and, if necessary, seal end lap with

plastic Asbestos Bitumen Compound.)

STANDARD LENGTHS — See Tables below

MAX. PURLIN SPACING — ROOFING 48"

GIRT — WALL SIDING 72"

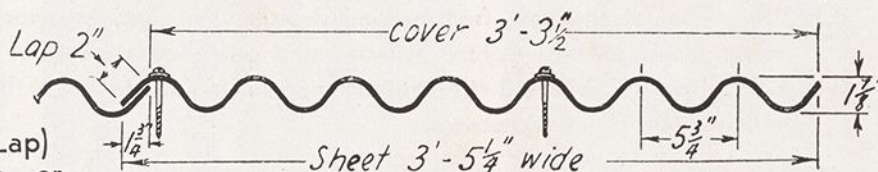
WOOD BATTENS (If used) —  $3" \times 1\frac{1}{2}"$  or  $3" \times 1\frac{1}{4}"$

WEIGHT — Bulk material 2.8 lbs. per sq. ft. approx. uncrated

(or approx. 280 lbs. per 100 sq. ft.) (Add 10% for crating)

— Fixed on roof with 6" end lap and 2" side lap average

316 lbs. per 100 sq. ft.



Screws or other fixings where shown

2" SIDE LAP

(For 7" Side Lap see Sheet No. 3)

## STANDARD LENGTHS AND COVERING CAPACITY

### SIDE LAP 2"

LENGTH	SHEETS REQUIRED TO COVER 100 SQ. FEET		LENGTH	SHEETS REQUIRED TO COVER 100 SQ. FEET	
	6" End Lap	9" End Lap		6" End Lap	9" End Lap
5' 0"	6.75	7.15	8' 0"	4.05	4.19
5' 6"	6.08	6.39	8' 6"	3.80	3.92
6' 0"	5.52	5.80	9' 0"	3.57	3.68
6' 6"	5.06	5.28	9' 6"	3.37	3.47
7' 0"	4.68	4.85	10' 0"	3.20	3.28
7' 6"	4.34	4.50			
Additional Area Covered by Each Sheet at Eaves				1.64 sq. ft.	2.47 sq. ft.

(For Side Lap 7" see Sheet No. 3)

SHEET No. 2

SERVICE SHEET No. 5101

CORRUGATED DURABESTOS

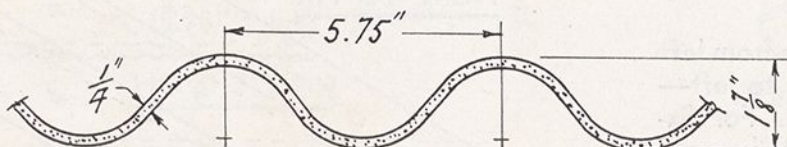
WUNDERLICH LIMITED

SHOWROOMS  
SYDNEY, NEWCASTLE, MELBOURNE  
ADELAIDE, PERTH, BRISBANE,  
HOBART, LAUNCESTON

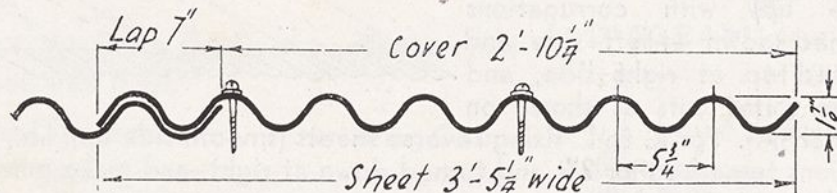


# WUNDERLICH CORRUGATED DURABESTOS

5.75" Pitch — Side Lapped 7"



- THICKNESS —  $\frac{1}{4}$ " (Nominal)  
 DEPTH —  $1\frac{7}{8}$ " "  
 WIDTH —  $3' 5\frac{1}{4}"$  "  
 EFFECTIVE COVER —  $2' 10\frac{1}{4}"$  "  
 (for 7" side lap)  
 SIDE LAP — 7" as shown, or  
 2" (see Sheet No. 2)  
 END LAP — For Roofing 6" or more,  
 depending on position  
 and pitch of roof  
 — For Siding 4"



Screws or other fixings where shown

7" SIDE LAP

(For 2" Side Lap see Sheet No. 2)

MINIMUM PITCH FOR END LAP OF 6"—20 degrees

MINIMUM PITCH FOR END LAP OF 9"— $12\frac{1}{2}$  degrees

(Under  $12\frac{1}{2}$  degrees use 12" end lap—and, if necessary, seal end lap with plastic Asbestos Bitumen Compound.)

STANDARD LENGTHS — See Tables below

MAX. PURLIN SPACING—ROOFING 48"

GIRT — WALL SIDING 72"

WOOD BATTENS (If used)—3" x  $1\frac{1}{2}$ " and 3" x  $1\frac{1}{4}$ "

WEIGHT — Bulk material 2.8 lbs. per sq. ft. approx. uncrated  
 (or approx. 280 lbs. per 100 sq. ft.) (Add 10% for crating)  
 — Fixed on roof with 6" end lap and 7" side lap average  
 360 lbs. per 100 sq. ft.

## STANDARD LENGTHS AND COVERING CAPACITY

SIDE LAP 7"

LENGTH	SHEETS REQUIRED TO COVER 100 Sq. FEET		LENGTH	SHEETS REQUIRED TO COVER 100 Sq. FEET	
	6" End Lap	9" End Lap		6" End Lap	9" End Lap
5' 0"	7.79	8.24	8' 0"	4.67	4.83
5' 6"	7.00	7.37	8' 6"	4.38	4.52
6' 0"	6.37	6.67	9' 0"	4.13	4.25
6' 6"	5.84	6.09	9' 6"	3.89	4.02
7' 0"	5.39	5.60	10' 0"	3.69	3.79
7' 6"	5.00	5.19			
Additional Area Covered by Each Sheet at Eaves				1.43 sq. ft.	2.14 sq. ft.

(For Side Lap 2" see Sheet No. 2)

SHEET No. 3

SERVICE SHEET No. 5102

CORRUGATED DURABESTOS

WUNDERLICH LIMITED

SHOWROOMS  
 SYDNEY, NEWCASTLE, MELBOURNE,  
 ADELAIDE, PERTH, BRISBANE,  
 HOBART, LAUNCESTON

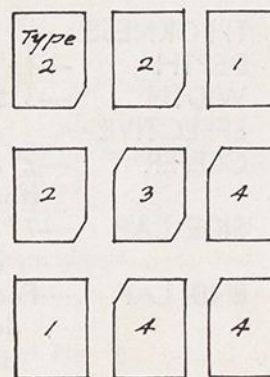
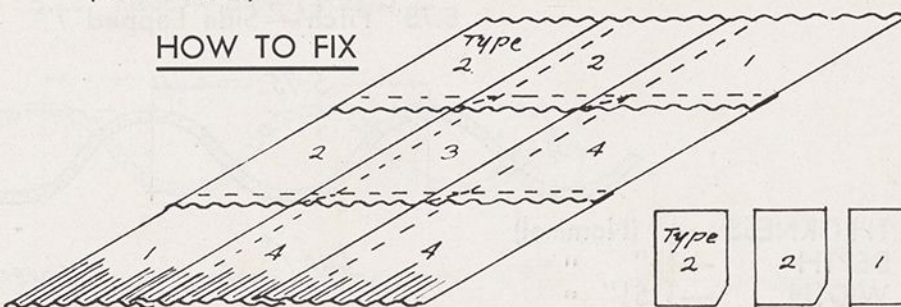


# WUNDERLICH CORRUGATED DURABESTOS

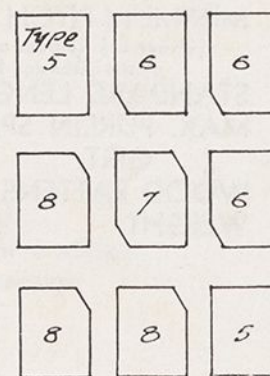
(5.75" Pitch)

## HOW TO FIX

Sheets are fixed either from left to right or from right to left—straight joint method. For fixing L. to R. take sheets (smooth side up) with corrugations turned down at left side and turned up at right side, and make mitre cuts as shown on Sketch (A). For R. to L. fixing reverse sheets (smooth side up), i.e., corrugations turned up at left and turned down at right, and make mitre cuts as shown on Sketch (B).



SKETCH A



SKETCH B

### SKETCH A—(L. to R. Fixing):

TYPE 1—All Corners Square.

" 2—Bottom Right Corner Cut.

" 3—Top Left and Bottom Right Corners Cut.

" 4—Top Left Corner Cut.

### SKETCH B (R. to L. Fixing):

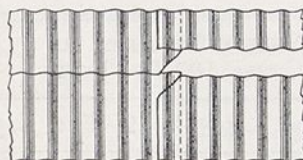
TYPE 5—All Corners Square.

" 6—Bottom Left Corner Cut.

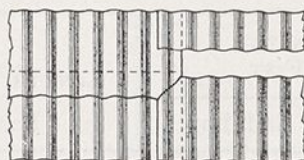
" 7—Top Right and Bottom Left Corners Cut.

" 8—Top Right Corner Cut.

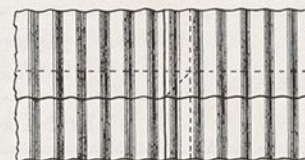
### MITRE JOINTS (LEFT TO RIGHT 7" SIDE LAP FIXING):



A. Showing position of sheets with mitred corners ready for butting together.



B. Showing upper mitred sheet butted into position.



C. Showing top sheet (overlapping mitre joint) in position.

**NOTE:** Sheets are supplied with all corners square. All necessary mitreing of corners to be done on site to suit end lap.

**GABLE AND HIP ROOFS:** In fixing corrugated sheets it is imperative that both slopes of roof be commenced at the same end of building, that is, one side left to right and the opposite side right to left.

SHEET No. 4

SERVICE SHEET No. 5103

CORRUGATED DURABESTOS

WUNDERLICH LIMITED

SHOWROOMS  
SYDNEY, NEWCASTLE, MELBOURNE,  
ADELAIDE, PERTH, BRISBANE,  
HOBART, LAUNCESTON



# WUNDERLICH CORRUGATED DURABESTOS

(5.75" Pitch)

## HOW TO FIX

Continued from Service Sheet (4).

**STRUCTURE:** The roof construction should be slightly stronger than that required for a 24-gauge Galvanised Iron Roof.

**For Steel Frame Construction**—See Diagrams 1 to 3. When fixing Corrugated Durabestos to steel purlins or girts, the purlin section can be either in the form of a channel or angle. Galvanised Toe Clips to suit both sections and siding clips for angle sections have been standardised.

As an alternative to fixing with hook bolts and clips, the steel sections can be drilled and tapped by our fixers and the sheets secured with galvanised thread screws.

**For Timber Construction**—See Diagram 4.

**For Composite** —See Diagram 5.

**FASTENING:** Drill all holes (do not punch) 5/16" diameter or approximately 1/32" diameter greater than the diameter of the fixings used. Drill holes only in the top of the corrugations. One screw with one galvanised and one felt under washer, or one bolt with one galvanised and one felt under washer comprises a set.

For Roofing, secure sheets at each purlin or batten and at 1st or 2nd and 5th corrugation crowns.

For Wall Siding, secure sheets at each girt or plate at 1st and 5th corrugation crowns.

When securing sheets the screw or bolt head and both galvanised and felt washers must be liberally coated with a bitumen asbestos plastic compound.

Use 4" galvanised roofing screws where 3 thicknesses of sheet occur.

Use 3½" galvanised roofing screws where 2 thicknesses of sheet occur.

Use 3" galvanised roofing screws where 1 thickness of sheet occurs.

As wall siding is fixing to girts that may be at 6' intervals, it is necessary to clamp the lap edges together by securing with 1" galvanised lap bolts as shown in Diagram 6.



DIAGRAM 6.

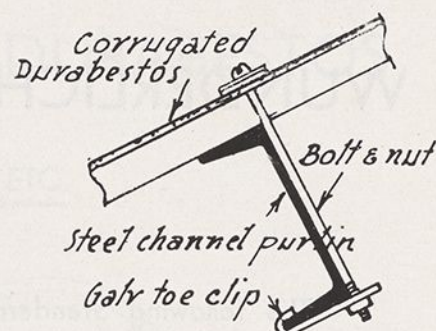


DIAGRAM 1

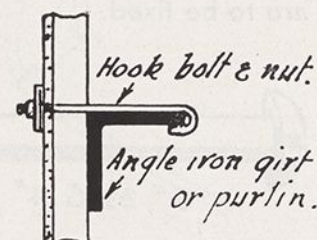


DIAGRAM 2

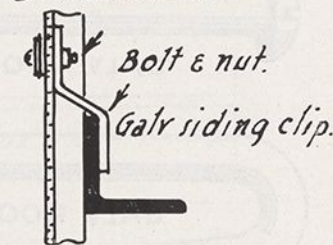


DIAGRAM 3

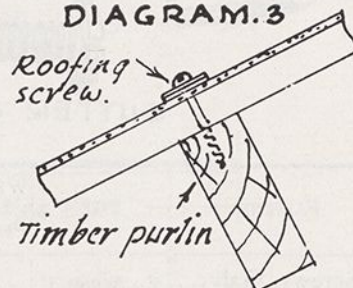


DIAGRAM 4

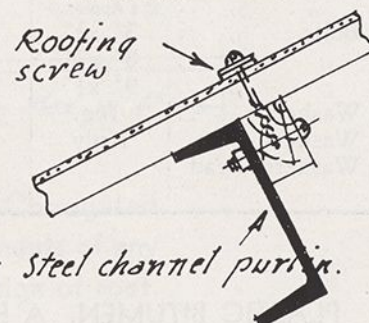


DIAGRAM 5.

SHEET No. 5

SERVICE SHEET No. 5104  
CORRUGATED DURABESTOS

WUNDERLICH LIMITED  
SHOWROOMS  
SYDNEY, NEWCASTLE, MELBOURNE,  
ADELAIDE, PERTH, BRISBANE,  
HOBART, LAUNCESTON

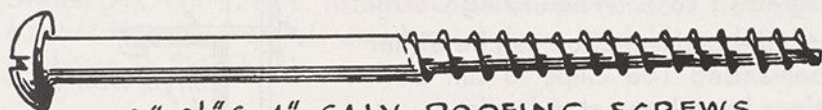


# WUNDERLICH CORRUGATED DURABESTOS

(5.75" Pitch)

## STANDARD FASTENERS

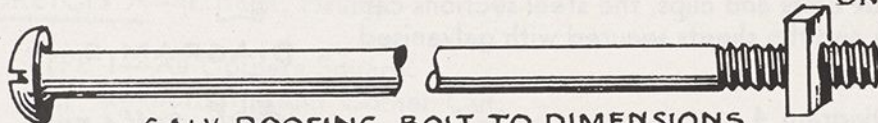
The following Standard Fasteners are employed when fixing Corrugated Sheets and Accessories. The type adopted depends on the construction of the building to which the sheets are to be fixed.



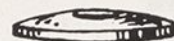
3", 3½" & 4" GALV ROOFING SCREWS.



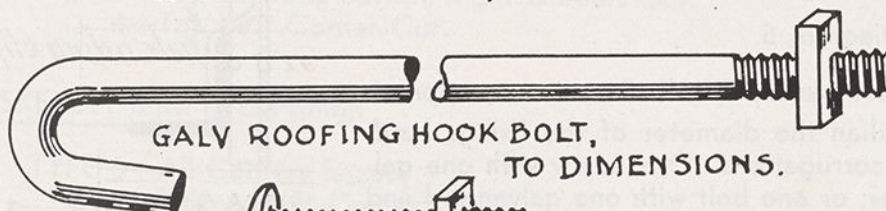
CURVED DIAMOND WASHERS  
ONE GALV & ONE BITUMINOUS  
TO EACH SCREW OR BOLT.



GALV ROOFING BOLT, TO DIMENSIONS.



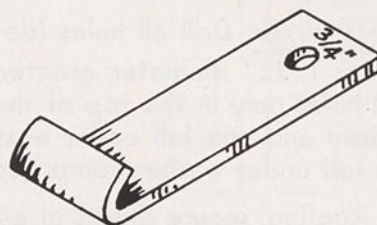
ROUND WASHERS  
LEAD OR BITUMINOUS



GALV ROOFING HOOK BOLT,  
TO DIMENSIONS.

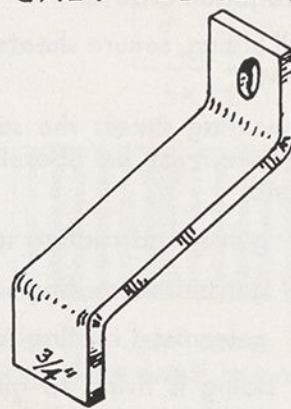


GUTTER & LAP BOLTS.



GALV TOE CLIP.

FASTENER	SIZE	WEIGHT LBS. PER 100	FASTENER	SIZE	WEIGHT LBS. PER 100
Screws, Galv...	4" x Approx. ¼"	6	Hook Bolts, Galv.	5½" x ¼"	11
" " "	3½" x Approx. ¼"	4½	" " "	6½" x ¼"	12
" " "	3" x Approx. ¼"	3¾	" " "	7½" x ¼"	14
Bolts, " "	3" x ¼"	5	Toe Clips, " "	2½" x 12g.	10
" " "	8" x ¼"	12	" " "	3" x 12g.	11
" " "	9" x ¼"	14	Siding " "	4" x 12g.	10
Washers " "	16g.	2¼	Lap Bolts & Nuts, " "	¾" x ¼"	2¼
Washers, Bitu.	1-ply	3¾	" " " "	1" x ¼"	2½
Washers, Lead		1½	" " " "	1¼" x ¼"	2¾
			" " " "	1½" x ¼"	3¼



GALV SIDING CLIP.

PLASTIC BITUMEN. A black bitumen asbestos compound for Bedding head of bolt or screws and felt and galvanised washers. Supplied in tins of ½-pint to 4-gallon capacity.

SHEET No. 6

SERVICE SHEET No. 5105

CORRUGATED DURABESTOS

WUNDERLICH LIMITED

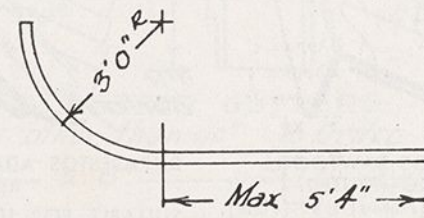
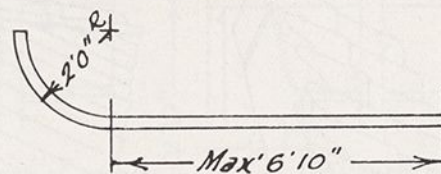
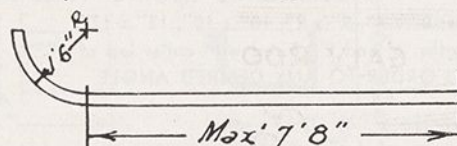
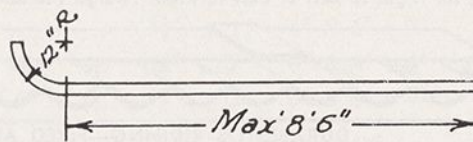
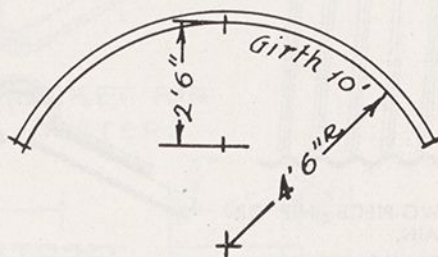
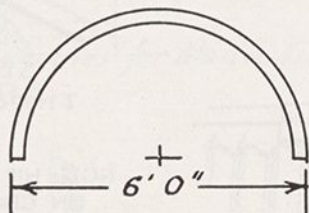
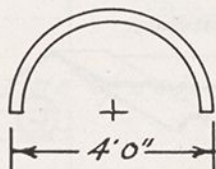
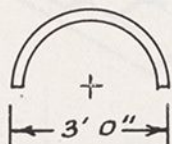
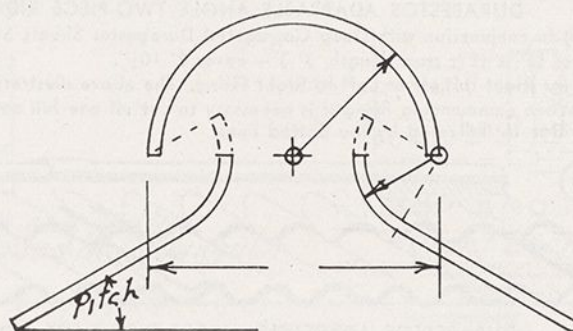
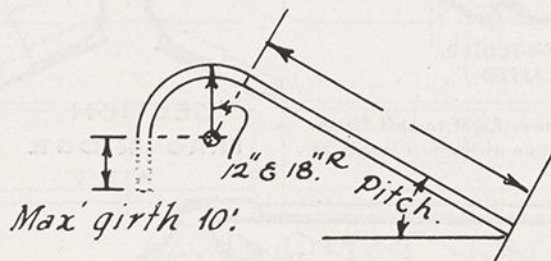
SHOWROOMS  
SYDNEY, NEWCASTLE, MELBOURNE,  
ADELAIDE, PERTH, BRISBANE,  
HOBART, LAUNCESTON



# WUNDERLICH CORRUGATED DURABESTOS

(5.75" Pitch)

## CURVED SHEETS FOR VENT RIDGING, ETC.



The above illustrations show the standard curves to which Corrugated Durabestos Sheets are manufactured to order. Minor segments of any of the above curves can be manufactured to suit any design of roof.

NOTE: All dimensions are taken at the external curvature of the sheet.

SHEET No. 7

SERVICE SHEET No. 5106

CORRUGATED DURABESTOS

WUNDERLICH LIMITED

SHOWROOMS  
SYDNEY, NEWCASTLE, MELBOURNE,  
ADELAIDE, PERTH, BRISBANE,  
HOBART, LAUNCESTON



# WUNDERLICH DURABESTOS RIDGING ETC.

(5.75" Pitch)

(A)



**DURABESTOS ADAPTABLE ANGLE TWO-PIECE RIDGING—FLUTED.**

For fixing in conjunction with Deep Corrugated Durabestos Sheets SIDE LAPPED 7".

Stock size, 12" x 12"; stock length, 3' 3"—cover 2' 10 1/4".

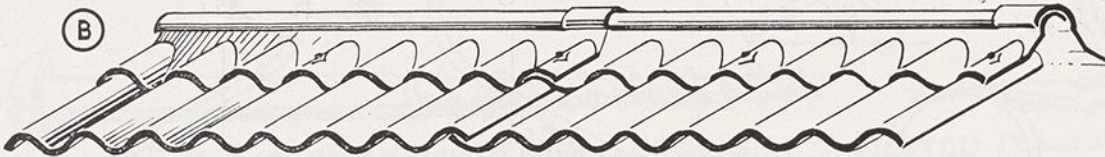
Suitable for Right to Left or Left to Right Fixing. The above illustration shows Right to Left Fixing.

NOTE: When commencing fixing it is necessary to cut off one full corrugation of the first length of ridge as indicated by the dotted lines.



**SECTION THRU RIDGE "A" & "B"**

(B)



**DURABESTOS ADAPTABLE ANGLE TWO-PIECE RIDGING—FLUTED.**

For fixing in conjunction with Deep Corrugated Durabestos Sheets SIDE LAPPED 2".

Stock size, 12" x 12"; stock length, 3' 7 1/2"—cover, 3' 3 1/2".

Suitable for Right to Left or Left to Right Fixing. The above illustration shows Right to Left Fixing.



**DURABESTOS RIDGING—FIXED ANGLE—ONE PIECE.**

Stock sizes: 8" x 8", 9" x 9", 10" x 10", 12" x 12".

Stock lengths: 6' and 8'. Fixed with collar lap of 4".

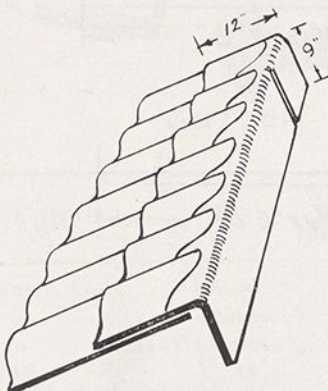
MADE TO ORDER TO ANY DESIRED ANGLE.

(C)



**SECTION THRU RIDGE "C"**

NOTE: HIP CAPPING BEDDED ON CEMENT MORTAR.  
(Supplied by Builder.)



**DURABESTOS SAWTOOTH RIDGING—FLUTED.**

Stock size: 12" (Fluted) x 9" (Plain).

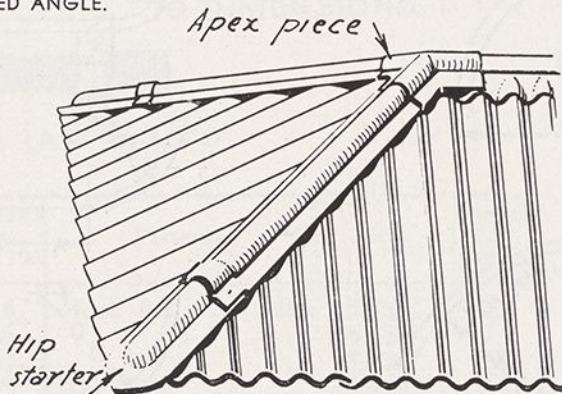
Stock lengths:

For 7" side lap fixing, 3' 3"—cover 2' 10 1/4".

For 2" side lap fixing, 3' 7 1/2"—cover 3' 4".

MADE TO ORDER TO ANY DESIRED ANGLE.

NOTE: WHEN FIXING TO SUIT SHEETS SIDE LAPPED 7", IT IS NECESSARY TO CUT OFF A FULL CORRUGATION OF THE FIRST LENGTH OF RIDGE.



**DURABESTOS ADAPTABLE ANGLE TWO-PIECE—HIP OR RIDGE CAPPING—PLAIN.**

SUITABLE FOR USE WITH DEEP CORRUGATED DURABESTOS SHEETS SIDE LAPPED 2" OR 7".

Stock sizes: 8" x 8", 9" x 9", 10" x 10", 12" x 12".

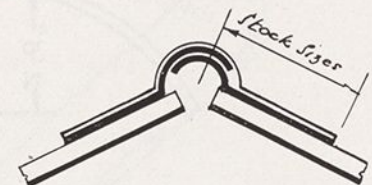
Stock lengths: 6'. FIXED WITH A COLLAR LAP OF 4".

## ACCESSORIES:

APEX PIECES—MADE TO ORDER TO SUIT ANGLE OF ROOF AND TYPE OF RIDGE AND HIP CAPPING.

HIP STARTERS—MADE TO ORDER TO SUIT ANGLE AT HIP.

GABLE ENDS AND OTHER ACCESSORIES TO ORDER



**SECTION THRU HIP**

SHEET No 8

SERVICE SHEET No. 5107

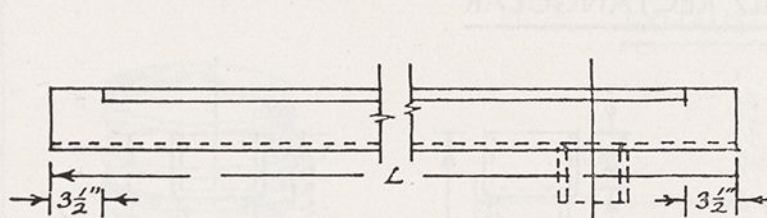
CORRUGATED DURABESTOS

WUNDERLICH LIMITED

SHOWROOMS  
SYDNEY, NEWCASTLE, MELBOURNE,  
ADELAIDE, PERTH, BRISBANE,  
HOBART, LAUNCESTON

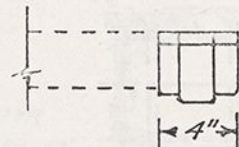
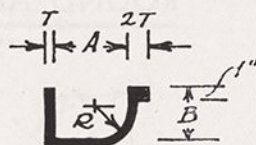


# WUNDERLICH DURABESTOS EAVES GUTTERS



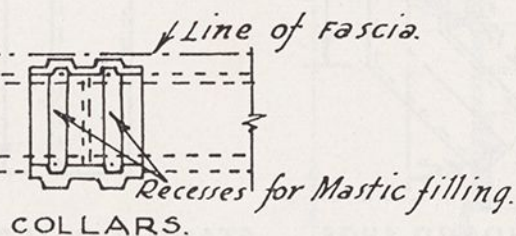
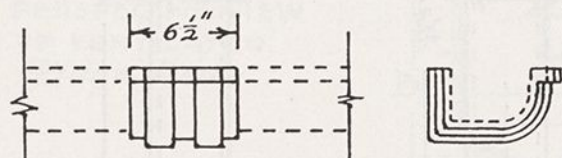
EAVES GUTTER.

Outlets in any position  
to suit Round or Rectangular  
D.Ps.

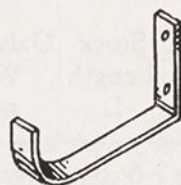


STOP ENDS.

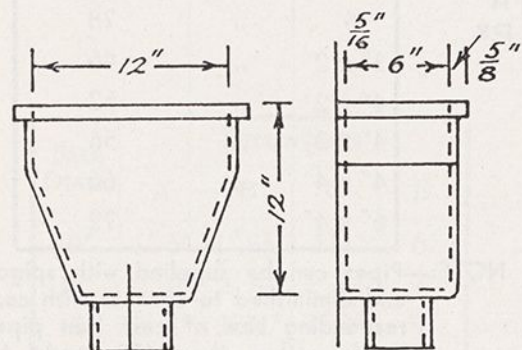
Right & Left Hand.



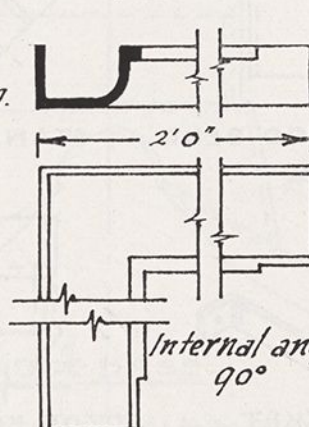
COLLARS.



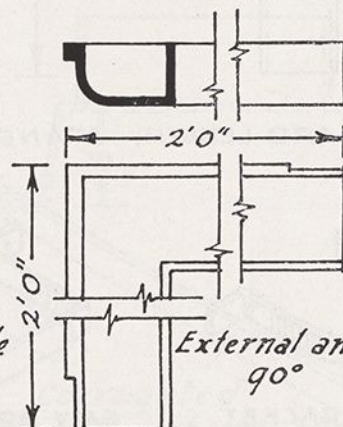
GALV BRACKET FOR  
EAVES GUTTERS.



RAIN-WATER HEAD.

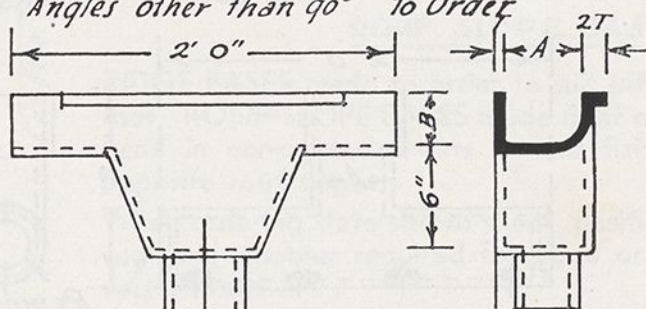


Internal angle  
90°



External angle  
90°

ANGLES FOR GUTTERS.  
Angles other than 90° To Order



SUMP OUTLET

Size A	Stock Length L	Max. Length L	Dimensions			Recommended Max. Outlet Size		Galv. Brackets Wt. lbs. per 100
			B	T	R	Dia.	Rect.	
4"	6' 0"	8' 0"	3"	5/16"	1 1/2"	3" & 3" x 2"		55
5"	"	"	3 1/2"	"	1 3/4"	4" & 4" x 3"		64
6"	"	"	4 1/2"	"	2"	5" & 4" x 4"		80
8"	8' 0"	"	5 1/2"	7/16"	3"	6" & 6" x 4"		112

SHEET No. 9

SERVICE SHEET No. 5108

DURABESTOS EAVES GUTTERS

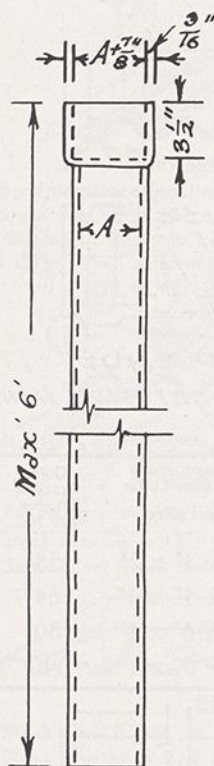
WUNDERLICH LIMITED

SHOWROOMS  
SYDNEY, NEWCASTLE, MELBOURNE.  
ADELAIDE, PERTH, BRISBANE.  
HOBART, LAUNCESTON

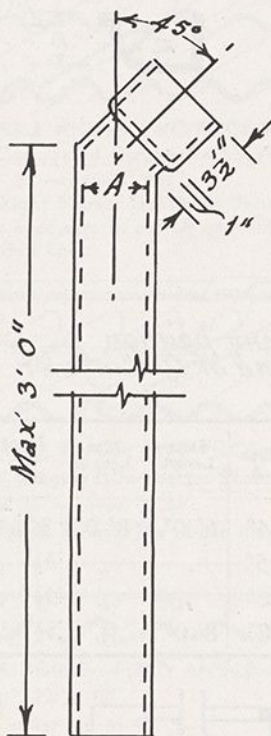


# WUNDERLICH DURABESTOS DOWN-PIPES

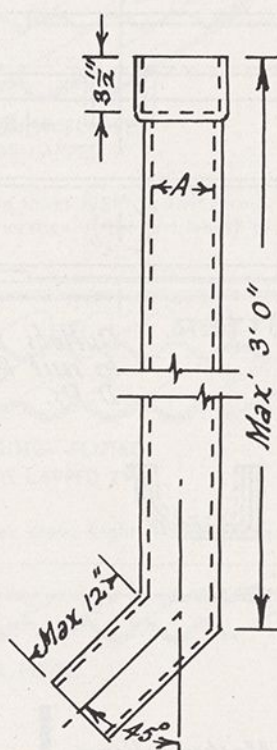
ROUND AND RECTANGULAR



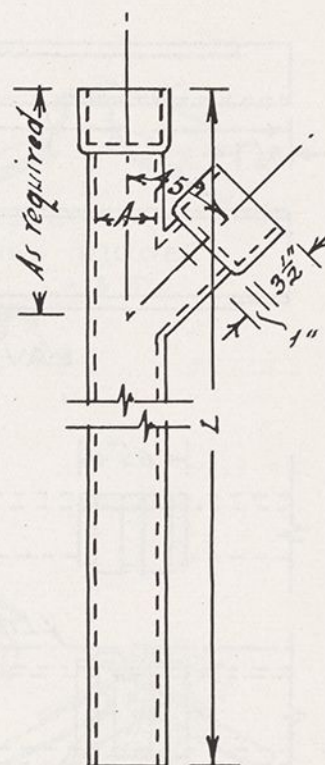
STANDARD LENGTH.



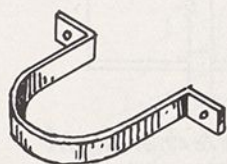
STANDARD BEND.



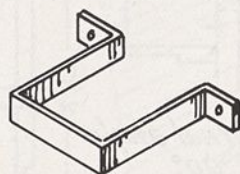
STANDARD SHOE.



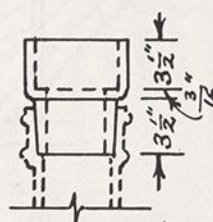
STANDARD JUNCTION.



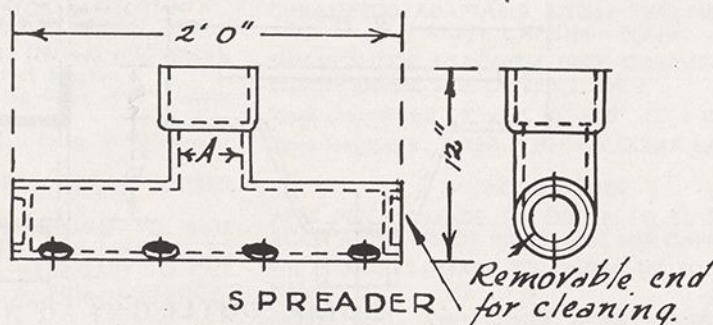
GALV BRACKET  
FOR ROUND D.P.s



GALV BRACKET  
FOR RECTANGULAR  
D.P.s



SPIGOT END FOR  
JUNCTION WITH  
CAST IRON D.P.s



SPREADER

Removable end  
for cleaning.

Size A	Stock Length L	Galv. Bracket Wt. lbs. per 100
3"	6' 0"	49
4"	"	58
5"	"	71
6"	"	78
3" x 2"	"	46
4" x 2"	"	52
4" x 3"	"	56
4" x 4"	"	66
6" x 4"	"	72

NOTE:—Pipes can be supplied with spigot end diminished to connect with corresponding size of cast iron pipe. Angles other than 45° made to order.

SHEET No. 10

SERVICE SHEET No. 5109

DURABESTOS DOWN-PIPES

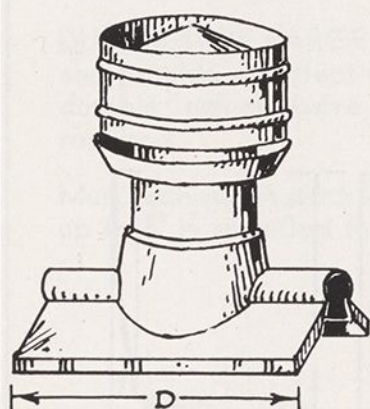
WUNDERLICH LIMITED

SHOWROOMS  
SYDNEY, NEWCASTLE, MELBOURNE,  
ADELAIDE, PERTH, BRISBANE,  
HOBART, LAUNCESTON

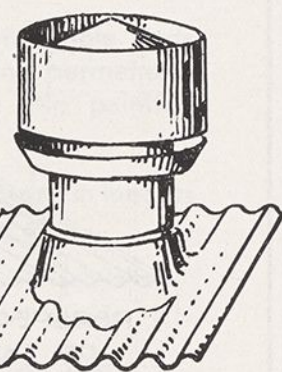


# WUNDERLICH DURABESTOS ROOF VENTS.

## EXHAUST TYPE

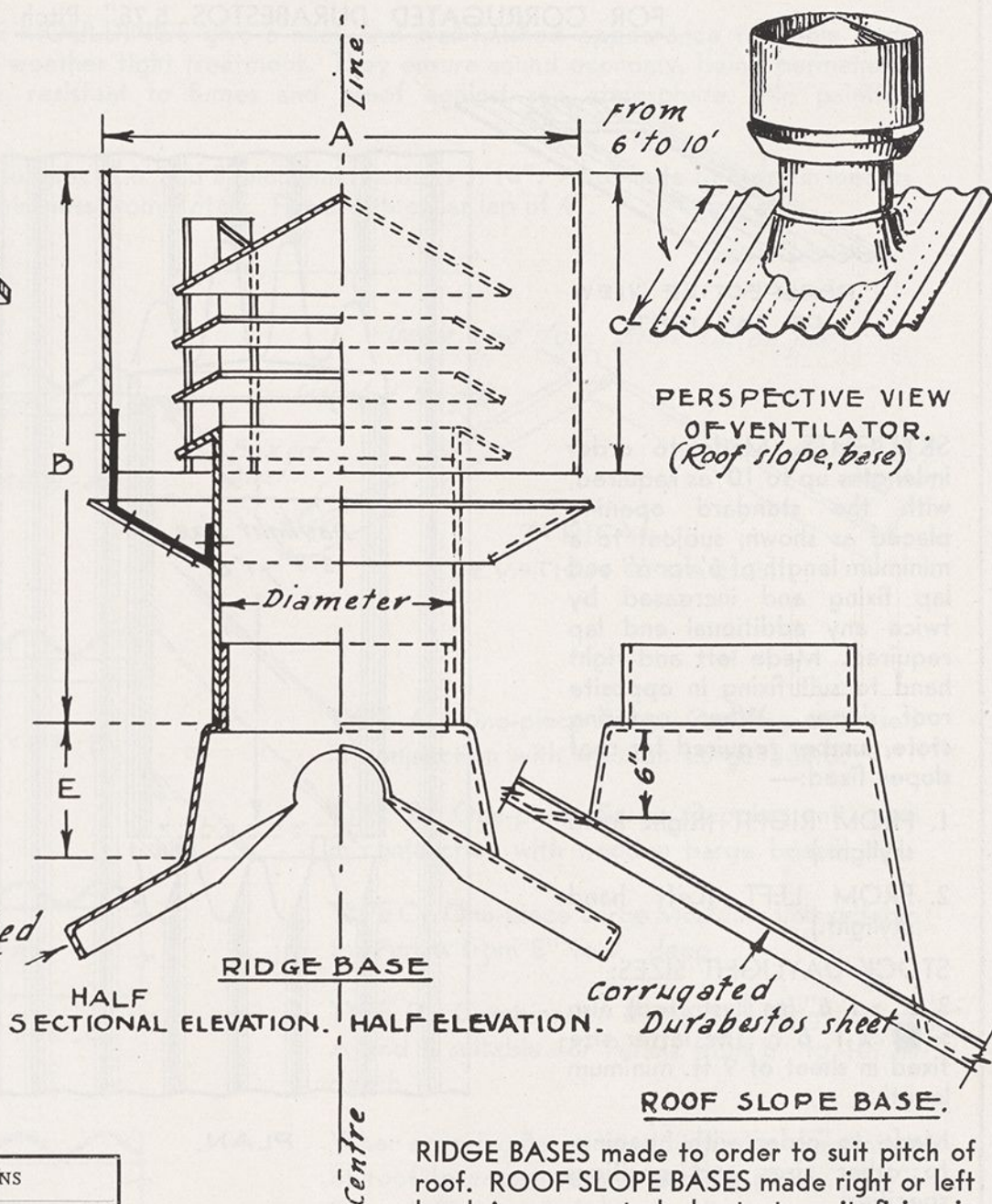


PERSPECTIVE VIEW  
OF VENTILATOR.  
(Ridge Base)



PERSPECTIVE VIEW  
OF VENTILATOR.  
(Roof slope, base)

Flange to be scribed  
over corrugations



SIZE DIAM.	DIMENSIONS			
	A	B	C	E
9"	1' 6"	1' 8½"	11¼"	6"
12"	2' 0"	2' 4"	1' 3"	7"
16"	2' 8"	2' 11"	1' 8"	9"
22"	3' 8"	3' 6"	2' 3"	12"

RIDGE BASES made to order to suit pitch of roof. ROOF SLOPE BASES made right or left hand in corrugated sheets to suit fixing in opposite roof slopes.

When ordering state size of sheet, position of vent and whether required for ridge or roof slopes fixed:—

1. FROM RIGHT. (Right-hand base.)
2. FROM LEFT. (Left-hand base.)

SHEET No. 11

SERVICE SHEET No. 5110

DURABESTOS ROOF VENTS

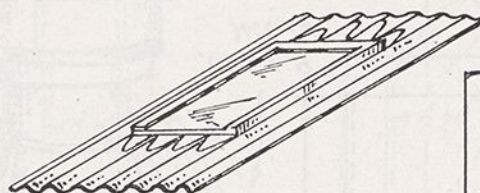
WUNDERLICH LIMITED

SHOWROOMS  
SYDNEY NEWCASTLE MELBOURNE.  
ADELAIDE PERTH BRISBANE.  
HOBART LAUNCESTON



# WUNDERLICH DURABESTOS SKYLIGHT

FOR CORRUGATED DURABESTOS 5.75" Pitch.



PERSPECTIVE VIEW  
OF SKYLIGHT.

SKYLIGHTS. Made to order in lengths up to 10' as required, with the standard opening placed as shown, subject to a minimum length of 6' for 6" end lap fixing and increased by twice any additional end lap required. Made left and right hand to suit fixing in opposite roof slopes. When ordering state number required for roof slopes fixed:—

1. FROM RIGHT (Right hand skylight.)
2. FROM LEFT (Left hand skylight.)

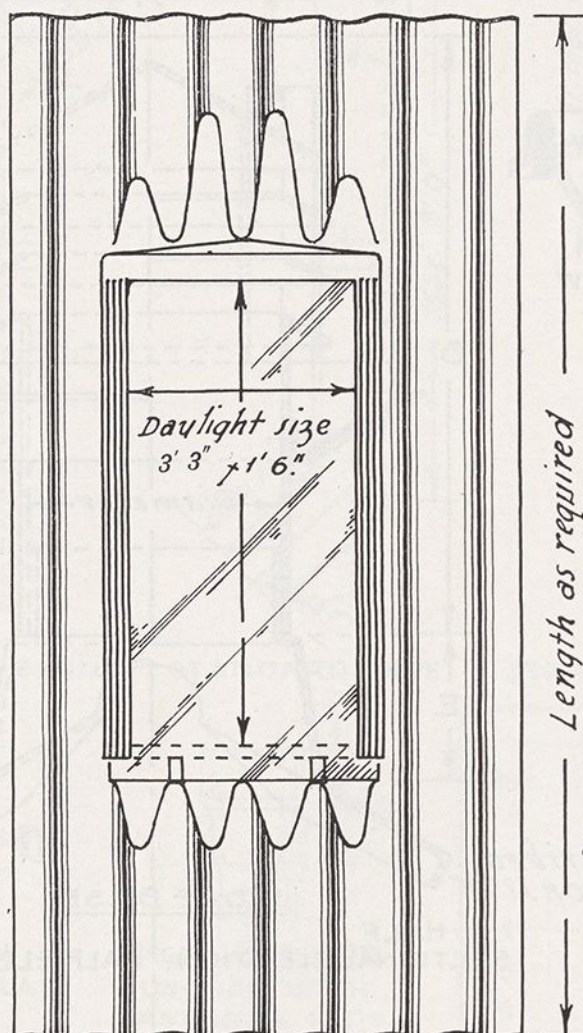
## STOCK DAYLIGHT SIZES:

3' 3" x 1' 6" (as illustrated), also 5' 0" x 1' 6". (The latter size fixed in sheet of 9 ft. minimum length.

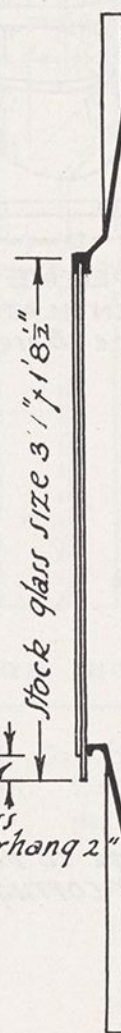
Made to order with openings to other sizes and positions specified.

Supplied unglazed or glazed with  $\frac{1}{4}$ " wired glass.

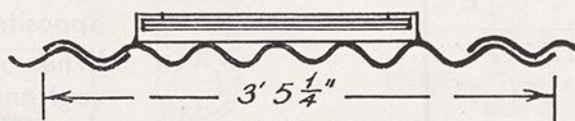
Durabestos Skylights are fixed in a similar manner to Durabestos Corrugated Sheets.



PLAN.



LONG SECTION.



END ELEVATION.

SHEET No. 12

SERVICE SHEET No. 5111

DURABESTOS SKYLIGHT

WUNDERLICH LIMITED

SHOWROOMS

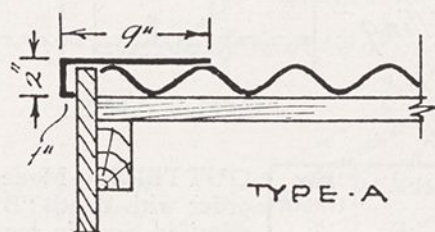
SYDNEY, NEWCASTLE, MELBOURNE,  
ADELAIDE, PERTH, BRISBANE,  
HOBART, LAUNCESTON



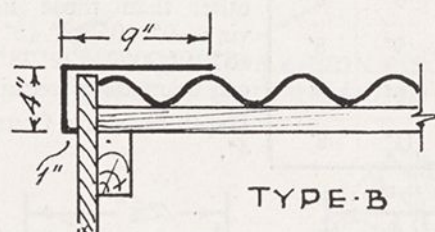
# WUNDERLICH DURABESTOS BARGE MOULDS

DURABESTOS BARGE MOULDINGS give a neat and well-finished appearance to gable ends and provide a perfect weather tight treatment. They ensure sound economy, being permanent, durable, non-corrosive, resistant to fumes and proof against sea atmosphere. No painting required.

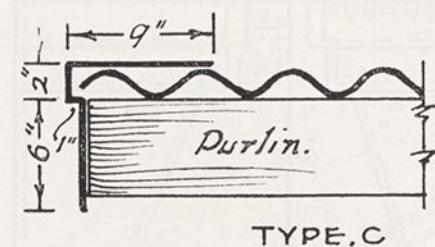
Manufactured in stock lengths of 6' and 8', nominal thickness 3/16". Also made to order in lengths up to 8' in specified thickness from 3/16". Fixed with collar lap of 4".



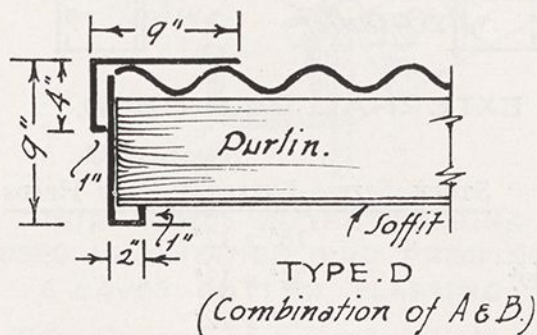
TYPE A



TYPE B

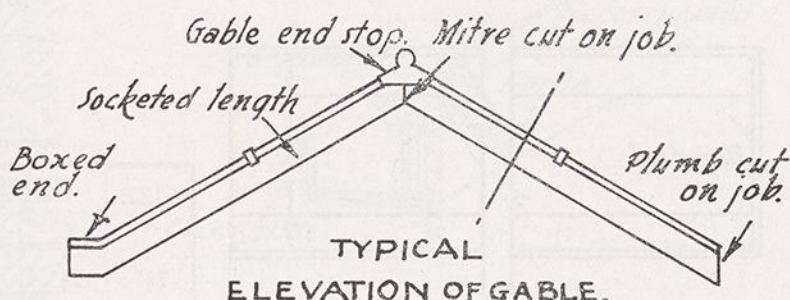


TYPE C



TYPE D

(Combination of A & B.)



TYPE A. One-piece Barge Capping unit used in conjunction with wooden barge board.

TYPE B. One-piece Barge Capping unit used in conjunction with wooden barge board.

TYPE C. One-piece Barge Moulding unit suitable for Purlins from 5" to 7" deep.

TYPE D. Combination Barge Moulding unit of A and B suitable for Purlins from 6" to 10" in depth.

When ordering Barge Mouldings give exact pitch of roof to ensure return finishing plumb, also if Barge is Right or Left hand. All mitres to be cut on job by purchaser. To determine "hand" of Barge, stand facing gable, when the Barge on the left is "LEFT HAND" and that on the right, "RIGHT HAND."

SHEET No. 13

SERVICE SHEET No. 5112

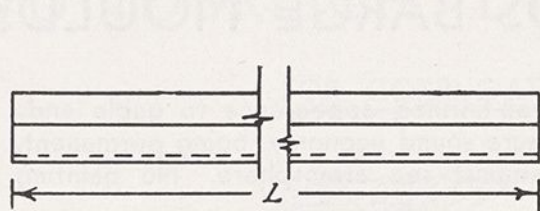
DURABESTOS BARGE MOULDS

WUNDERLICH LIMITED

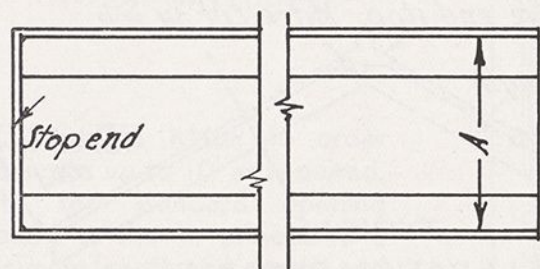
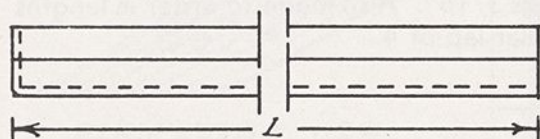
SHOWROOMS  
SYDNEY, NEWCASTLE, MELBOURNE,  
ADELAIDE, PERTH, BRISBANE,  
HOBART, LAUNCESTON



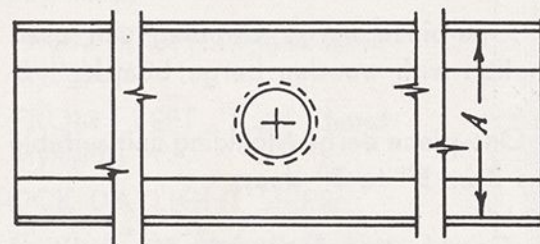
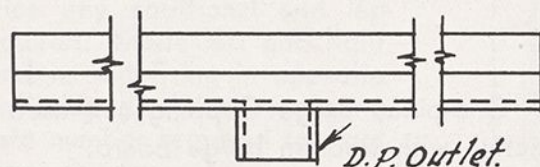
# WUNDERLICH DURABESTOS BOX GUTTERS



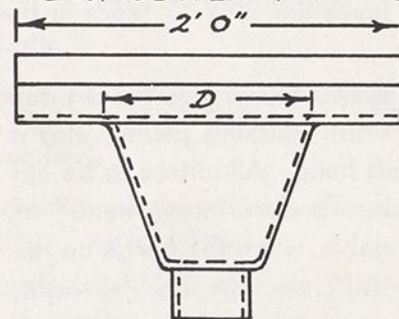
BOX GUTTER



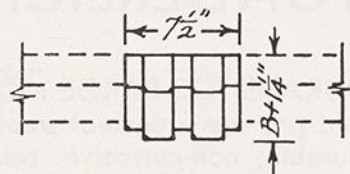
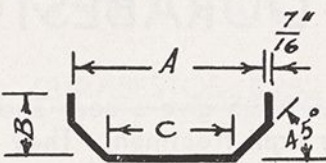
BOX GUTTER WITH STOP END.



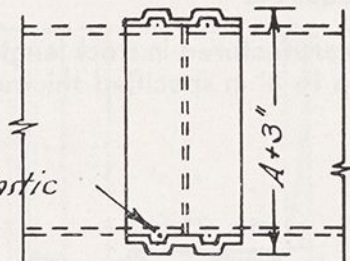
BOX GUTTER WITH OUTLET.



BOX GUTTER WITH SUMP OUTLET.



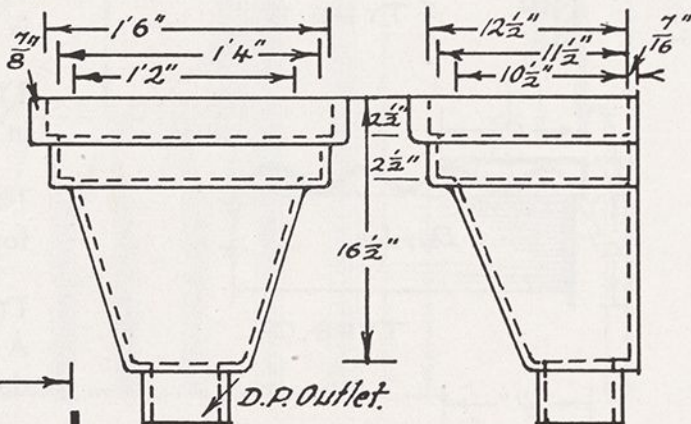
*Recess for Mastic filling.*



COLLARS.

SIZE A	DIMENSIONS			MAX. LENGTH L
	C	D	E	
7 1/2"	5 1/2"	9"	6"	8'
12"	8"	13"	9"	8'
14"	10"	15"	10"	8'
16"	11"	17"	11"	8'

GUTTERS: Made to order with depth "B" as required and in lengths "L" to suit job. Widths other than those listed viz:—9" 10" 13" 15" 17" 18" 19" 20" 21" 22" 23" 24" can be made if required. Depth of Stock Gutters, 4".



EXTERNAL RAIN HEAD.

STOCK SIZES—EXTERNAL RAIN HEADS

18" x 12"  
24" x 12"  
30" x 12"

SHEET No. 14

SERVICE SHEET No. 5113

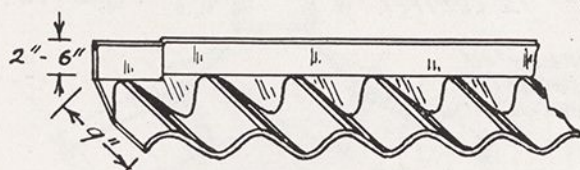
DURABESTOS BOX GUTTERS

WUNDERLICH LIMITED  
SHOWROOMS  
SYDNEY, NEWCASTLE, MELBOURNE,  
ADELAIDE, PERTH, BRISBANE,  
HOBART, LAUNCESTON



# DURABESTOS FLASHING & BIRD PROOFING

(5.75" Pitch)

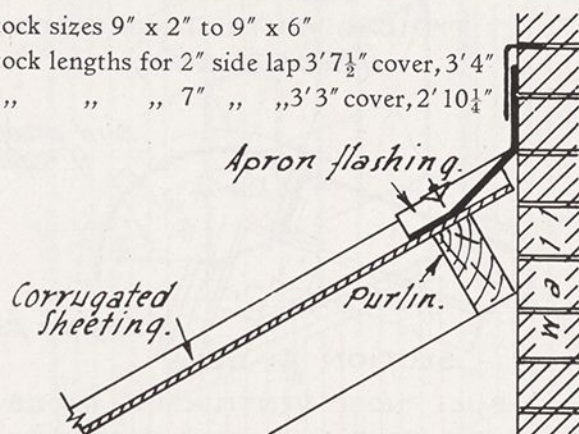


PERSPECTIVE VIEW  
DURABESTOS FLUTED APRON PIECE

Stock sizes 9" x 2" to 9" x 6"

Stock lengths for 2" side lap 3' 7½" cover, 3' 4"

" " " 7" " " 3' 3" cover, 2' 10¼"



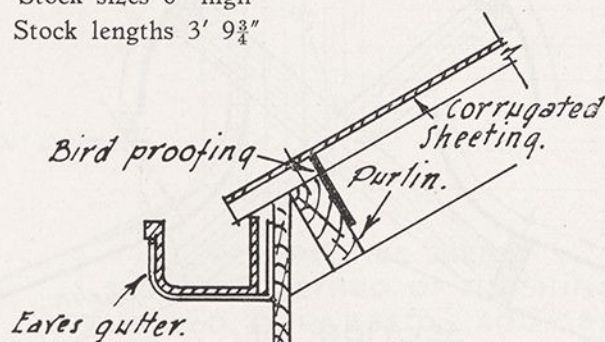
DURABESTOS APRON PIECE  
USED AS UNDERFLASHING.



PERSPECTIVE VIEW  
(Flat type, serrated edge)

Stock sizes 6" high

Stock lengths 3' 9¾"



DURABESTOS BIRD PROOFING  
(For fixing to timber only.)

NOTE.—FLUTED GUTTER FLASHING  
ALSO AVAILABLE WITH ROLLED  
APRON TO SUIT ANY PITCH.

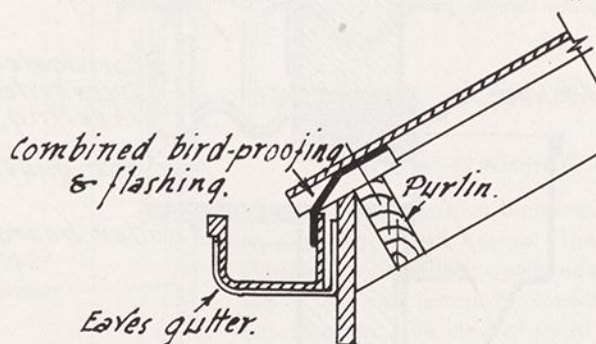


PERSPECTIVE VIEW  
DURABESTOS FLUTED GUTTER FLASHING.

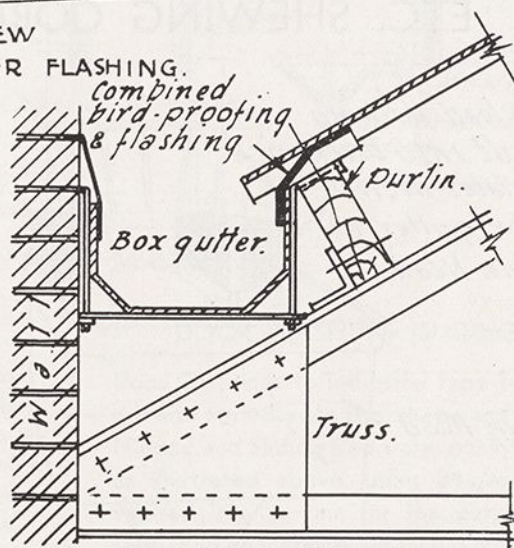
Stock sizes 6" x 2"

Stock lengths for 2" side lap 3' 7½" cover, 3' 4"

" " " 7" " " 3' 3" " 2' 10¼"



DURABESTOS GUTTER FLASHING  
USED AS COMBINED BIRD PROOFING  
& EAVES GUTTER FLASHING.



DURABESTOS GUTTER FLASHING  
USED AS COMBINED BIRD PROOFING  
& BOX GUTTER FLASHING.

WHEN ORDERING STATE PITCH OF ROOF, ALSO IF SHEETS ARE FIXED RIGHT TO LEFT OR LEFT TO RIGHT  
AND WITH 2" OR 7" SIDE LAP.

SHEET No. 15

SERVICE SHEET No. 5114

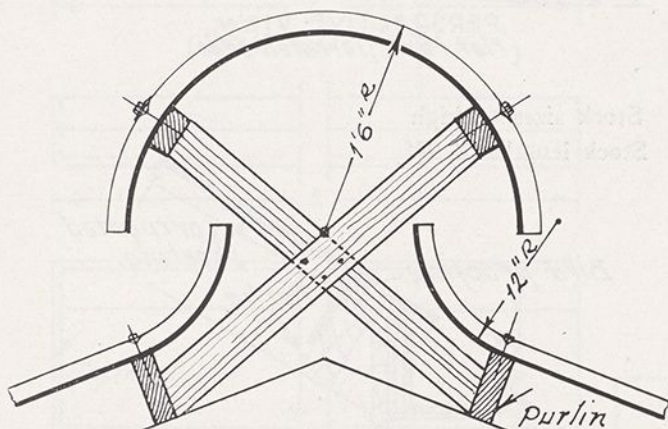
CORRUGATED DURABESTOS

WUNDERLICH LIMITED

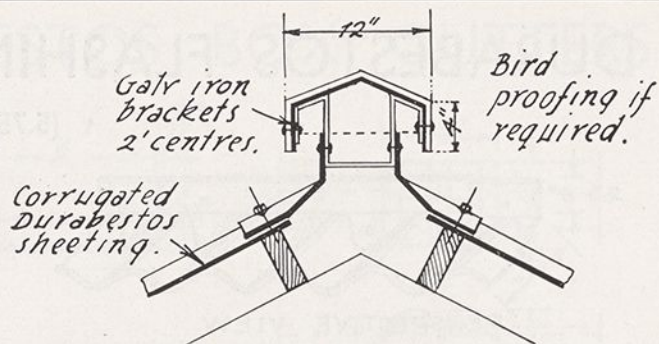
SHOWROOMS  
SYDNEY, NEWCASTLE, MELBOURNE.  
ADELAIDE, PERTH, BRISBANE.  
HOBART, LAUNCESTON



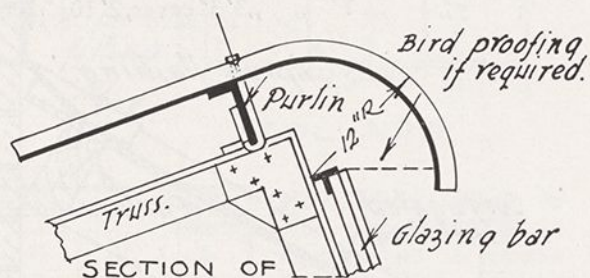
# WUNDERLICH CORRUGATED DURABESTOS VENTILATING RIDGE FINISHES



SECTION OF  
VENTILATING RIDGE FORMED FROM  
STOCK CURVED CORRUGATED  
DURABESTOS

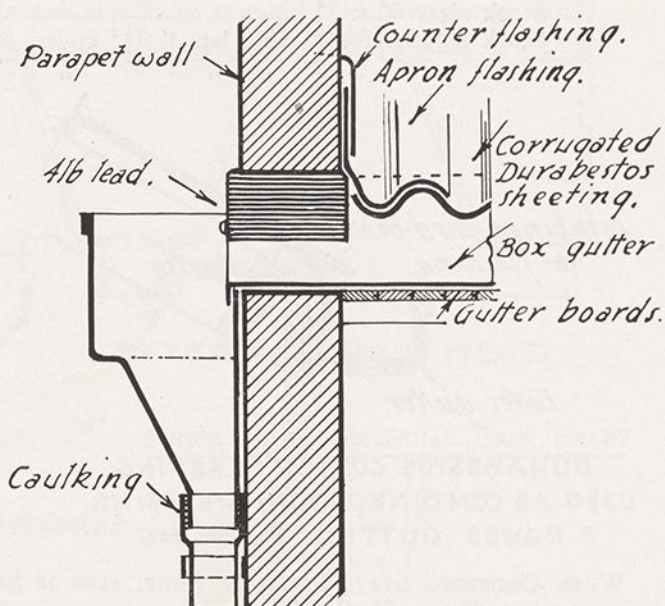
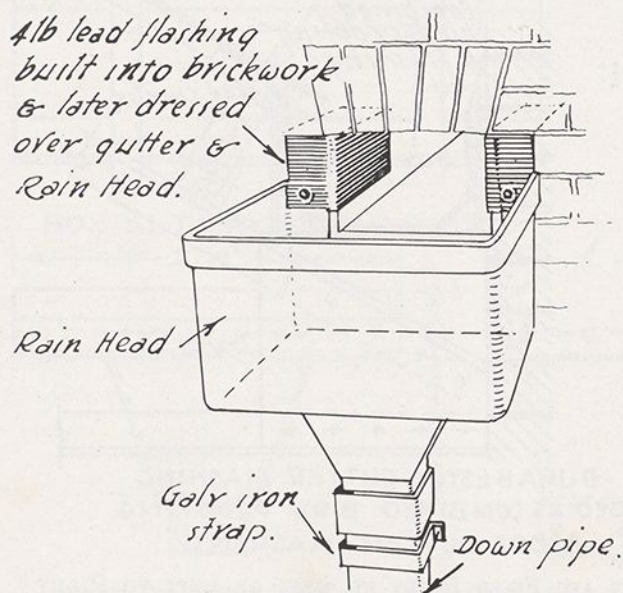


SECTION OF  
TYPICAL VENTILATING RIDGE.  
(Made to order.)



SECTION OF  
BULL NOSE VENTILATING RIDGE  
TO SOUTH LIGHT SAW TOOTH ROOFS FORMED  
FROM STOCK CURVED CORRUGATED DURABESTOS

## JUNCTION OF DURABESTOS BOX GUTTER, RAIN HEAD ETC, SHEWING CORRECT METHOD OF FLASHING



SHEET No. 16

SERVICE SHEET No. 5115

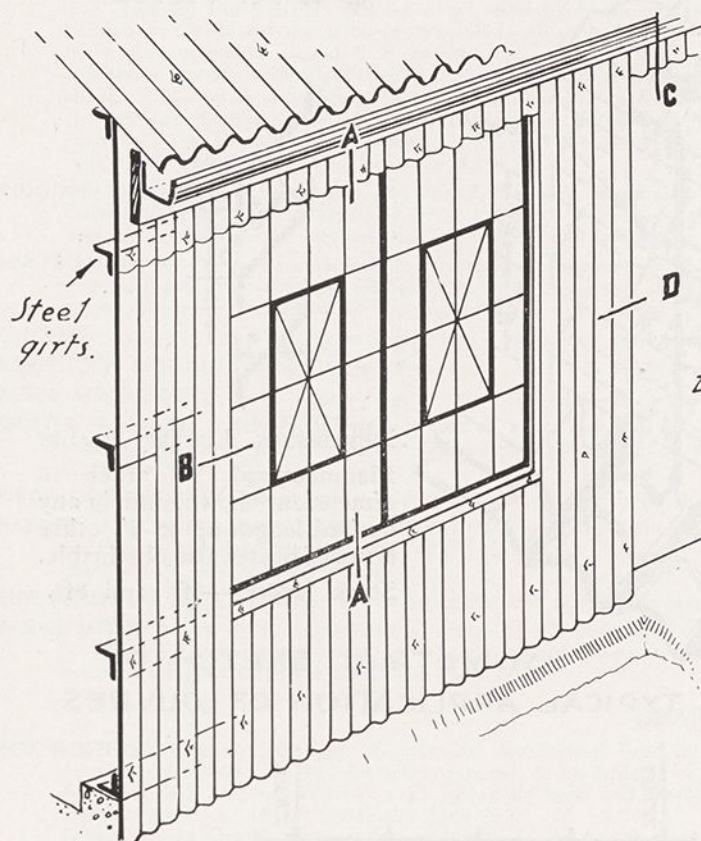
CORRUGATED DURABESTOS

WUNDERLICH LIMITED

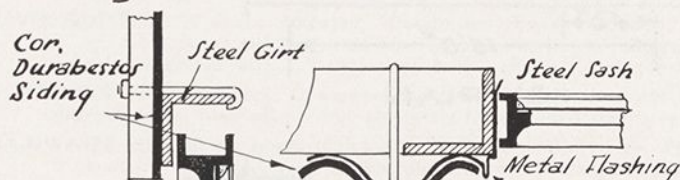
SHOWROOMS  
SYDNEY, NEWCASTLE, MELBOURNE.  
ADELAIDE, PERTH, BRISBANE.  
HOBART, LAUNCESTON



# WUNDERLICH CORRUGATED DURABESTOS WALL SIDING



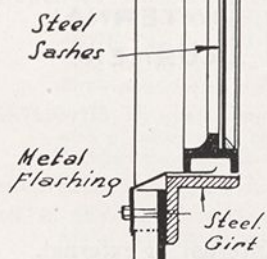
PERSPECTIVE SKETCH  
SHOWING METHOD OF FINISHING  
CORRUGATED DURABESTOS ADJACENT  
TO WINDOW & DOOR OPENINGS OF  
INDUSTRIAL BUILDINGS.



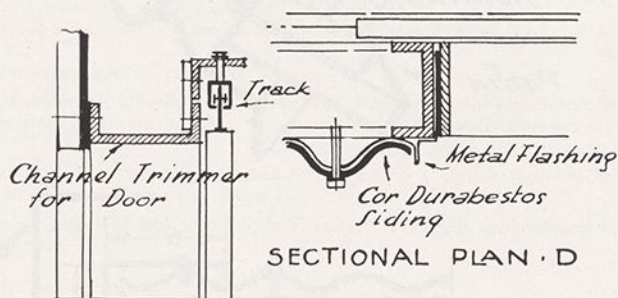
SECTIONAL PLAN · B

## WINDOW FLASHING (STEEL).

Windows to industrial buildings are varied as to size, shape and design. The above details illustrate the method usually adopted for flashing at sill and jambs to a window of typical construction. The class of sheet metal used for flashing depends on circumstances such as the industrial usages of the building, but 24-gauge galvanised iron or zinc will be found satisfactory for all ordinary buildings where corrosive chemicals and gases are not encountered.



VERT. SECTION A-A



VERT. SECTION · C

## DOOR FLASHING (SLIDING).

Door Openings to industrial type buildings are also varied as to size, shape and design. Hinged and Sliding Doors are usually flashed as illustrated above, using 24-gauge galvanised iron or zinc for the purpose. In formation concerning suggested methods of flashing around roller shutter door openings and other types of doors will be furnished on request.

SHEET No. 17

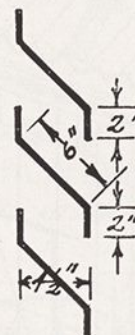
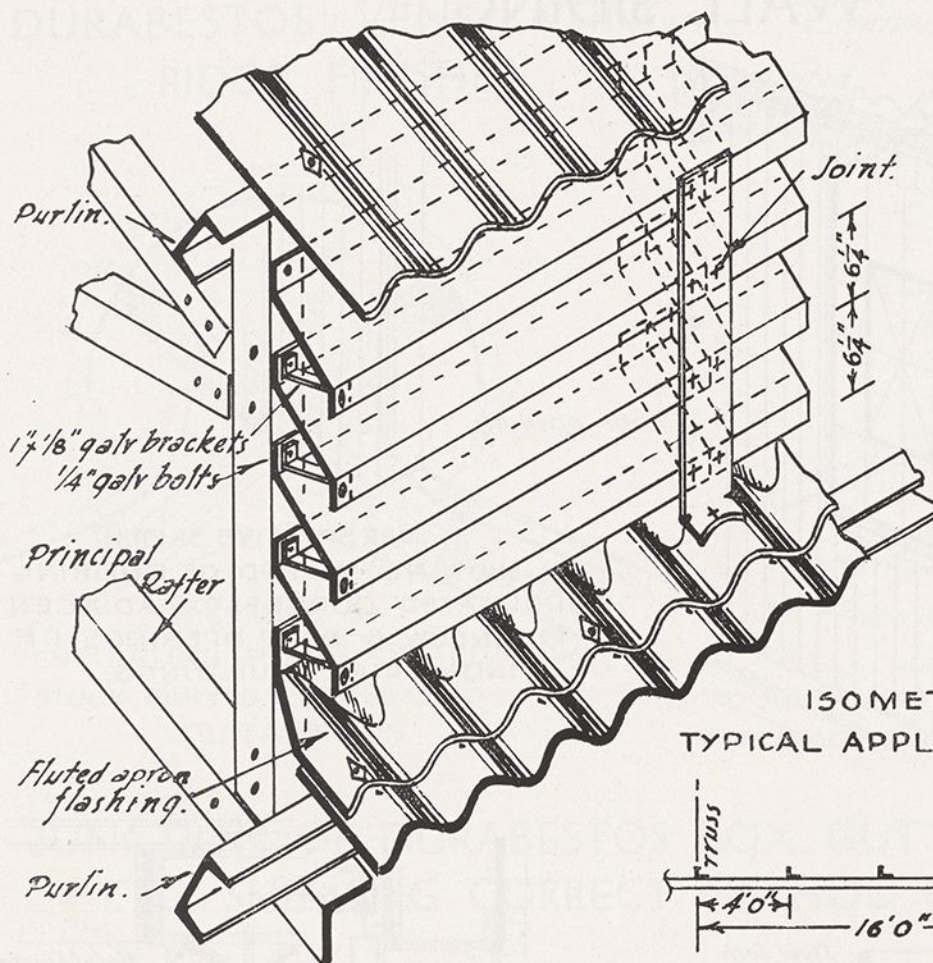
SERVICE SHEET No. 5116

CORRUGATED DURABESTOS

WUNDERLICH LIMITED  
SHOWROOMS  
SYDNEY, NEWCASTLE, MELBOURNE,  
ADELAIDE, PERTH, BRISBANE,  
HOBART, LAUNCESTON

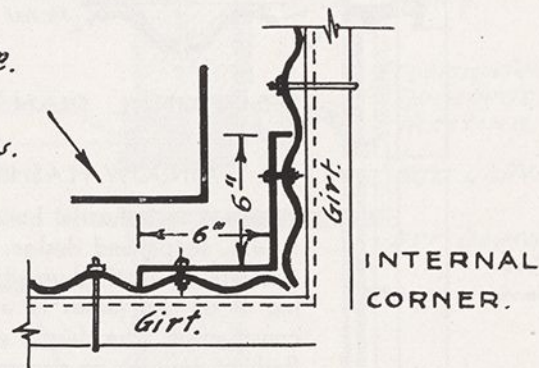
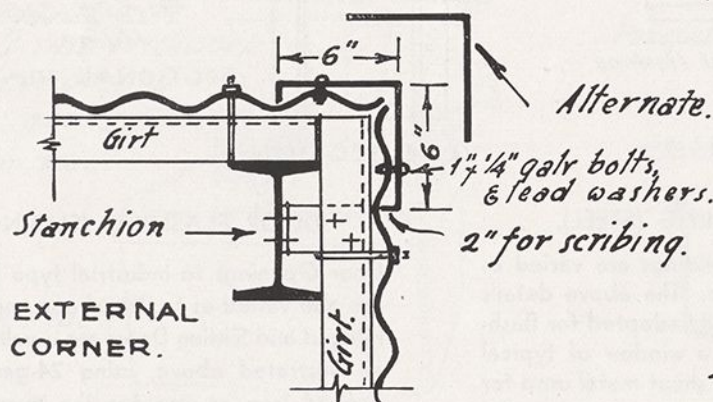
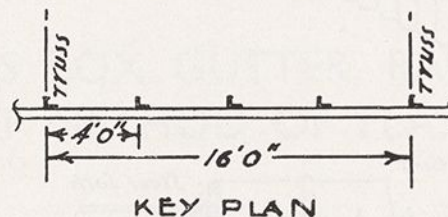


# DURABESTOS LOUVRES & WALL SIDING CORNERS



**DURABESTOS LOUVRE BLADES**  
Manufactured to order to dimensions shown, and in any desired length up to 8', other types of blades also obtainable.  
Stock lengths—6ft. and 8ft.

ISOMETRIC SKETCH OF  
TYPICAL APPLICATION OF LOUVRES.



SECTIONAL PLANS SHOWING INT & EXT  
TREATMENT OF SIDING CORNERS.

## CORNER PIECES

In order to make wall siding water tight at corners, corner pieces are provided either internal or external. These are made to an angle of 90° and have socketed ends. They are generally bolted to the vertical corrugated sheets with  $\frac{1}{4}$ " bolts and nuts with lead washer inserted to insure a watertight fixing.

SHEET No. 18

SERVICE SHEET No. 5117

CORRUGATED DURABESTOS

WUNDERLICH LIMITED

SHOWROOMS  
SYDNEY, NEWCASTLE, MELBOURNE,  
ADELAIDE, PERTH, BRISBANE,  
HOBART, LAUNCESTON



# DEEP CORRUGATED DURABESTOS [5.75" Pitch] ROOFING

## TYPICAL SPECIFICATION. ROOFING AND ACCESSORIES.

**ROOFING:** Supply and fix Deep Corrugated "Durabestos" Sheets (5.75" pitch and 3' 5½" wide), as indicated on drawings, to wood purlins with 2" or 7" side lap and minimum end lap of 6", fixed by means of galvanised roofing screws, galvanised washers and bituminous felt washers, well bedded on plastic asbestos bitumen compound. All screw holes to be drilled 1/32" larger than diameter of screw used.  
Purlin spacing not to exceed 4' 0" centres.

The entire roofing to be supplied and fixed by Wunderlich Limited.

**NOTE:** In lieu of wood purlins or battens, steel angles or channels may be employed, the roofing being fixed with (a) galvanised hook bolts; (b) galvanised bolts and clips, or (c) steel purlins drilled and tapped and roofing fixed with galvanised metal thread bolts. Under extreme conditions and for roof pitches under 12½ degrees, we recommend increased end lap and/or bedding of laps with plastic asbestos bitumen compound. (Refer Catalogue Pages 18-24.)

**RIDGING:** Main ridging to be covered with Deep Corrugated "Durabestos" 12" x 12" two-piece fluted adjustable ridging fixed as for roofing (refer Catalogue Page 24), or alternatively 12" x 12" or 10" x 10" fixed angle ridging (bedded on cement compo. set back from edges) fixed with lead and bituminous felt washers, the latter being well bedded on plastic asbestos bitumen compound.

**HIP CAPPING:** All hips to be covered with "Durabestos" Two-piece Plain Adjustable Hip Capping or 9" x 9" fixed angle "Durabestos" Capping fixed with lead and bituminous felt washers, the latter being well bedded on plastic asbestos bitumen compound; Hip Capping bedded on cement compo. set back from edges of Hip Capping and apex pieces. (Refer Catalogue Page 24.)

**CUTTING:** Allow for waste cutting on untrue hips and valleys, and/or at raking eaves line in the case of diminishing gutters.

**SAWTOOTH RIDGING:** Cover ridging of sawtooth roofs with fluted fixed angle sawtooth ridging (section selected). (Refer Catalogue Page 24.)

**RIDGE ACCESSORIES:** Cover intersections of ridge and hips with "Durabestos" Apex Pieces. Fix Hip Starters to all hips. (Refer Catalogue Page 24.)

**GUTTER FLASHING & BIRDPROOFING:** Fix to all eaves and box gutters "Durabestos" Fluted Gutter Flashing, or, alternatively, fix snugly against underside of corrugations of sheets "Durabestos" Serrated Edge Birdproofing nailed to timber gutter bearer with galvanised nails. (Refer Catalogue Page 31.)

**BIRDPROOFING ONLY:** Note: In the case of lean gutters, use fluted Durabestos Birdproofing Section in lieu of gutter flashing.

**PARAPET APRON FLASHING (END APRON):** Where skillion roofs abut ends of parapet walls, fit 9" x 3" "Durabestos" Fluted Parapet Apron Flashing to take lead over-flashing. (Refer Catalogue Page 31.) **NOTE:** "Durabestos" Fluted Apron Flashing can only be used where roof abutment on wall is dead square.

**SIDE FLASHING (SIDE APRON):** Where parapets abut sides of parapet walls, fit 15" girth side flashing turned up to take lead over-flashing.

**BARGE MOLD:** All verges to be covered by means of "Durabestos" Barge Mold, 12" x 12", 10" x 10", 9" x 9", 8" x 8", 9" x 4" x 1", 9" x 2" x 1", 9" x 8" x 1", or two-piece section and fixed with galvanised screws, lead and felt washers, the latter being well bedded on plastic asbestos bitumen compound. (Refer Catalogue Page 29.)

## DRAINAGE.

**BOX GUTTERS:** Fix where indicated, "Durabestos" Box Gutters fixed by Wunderlich Limited to grades as shown. Guttering to be accurately raked to minimum fall of 1" in 12'. Guttering supports to be supplied and fixed by Contractor, not to exceed 2' 6" centres.  
All joints to be bolted with 1½" x ¼" galvanised bolts and thoroughly sealed with plastic asbestos bitumen compound in accordance with Standard practice. (Refer Catalogue Page 25.)  
Outlets, Sump Outlets, Stop Ends, and/or Angles to Box Gutters to be purpose-made as required.

**EAVES GUTTERS:** Fix where indicated, "Durabestos" Eaves Guttering (fixed by Wunderlich Limited), complete with stop ends, outlets, mitres and 1" x 3/16" galvanised iron brackets. Brackets to be set accurately to required falls. All jointing to be securely sealed with bitumen compound and bolted with 1½" galvanised bolts. (Refer Catalogue Page 25.)

**DOWNPIPES:** Fit "Durabestos" Downpipes (specify size), complete with all necessary bends, shoes, offsets, spreaders and 1" x ½" galvanised brackets. Brackets to be fixed plumb and accurately to walls and collars neatly pointed. (Refer Catalogue Page 26.)

**RAINWATER HEADS:** Fit where indicated "Durabestos" Rainheads. Fix securely by means of galvanised iron brackets, rainheads scribed and cut, if necessary, around flanged outlets, etc. (Refer Catalogue Pages 32, 30 and 25.)

## VENTILATION.

**VENTILATORS:** Include in roofing "Durabestos" Exhaust Ventilators complete with

- (a) Roof slope bases moulded accurately to correct pitch
- (b) and/or Ridge Base Section formed to ridge angle.

Flashing included. (Refer Catalogue Page 27.)

**VENTILATING RIDGE:** Fix ventilating ridge to brackets as indicated, complete with special "Durabestos" Stop Ends, neatly scribed around ridging and flashed as necessary. (Refer Catalogue Pages 23 and 32.)

**CURVING:** "Durabestos" Sheets at apex of sawtooth roof slopes to be bullnosed to a radius of (state radius required). Curves of 9", 12", 18", 24" and 36" radius are standard and can be produced from stock moulds.

**NOTE:** See Page 23 for information concerning the maximum of straight that may be obtained on bullnosed "Durabestos" Sheets after allowance has been made for curved portion (Refer to Page 32 for details of Birdproofing Vent below bullnosed sheets.)  
Birdwire enclosing bullnosed vent space to be supplied and fixed by Contractor.

**SKYLIGHTS:** Fix where shown on details "Durabestos" Skylights, moulded in Corrugated Sheet, daylight size, 3' 3" x 1' 6" or 5' x 1' 6", glazed with ¼" wired cast glass, to suit Deep Corrugated "Durabestos" Sheets, 5.75" pitch.  
(Melbourne Practice—Skylight Sizes 3' x 2', 4' x 2' and 5' x 2' daylight opening.)

**MANHOLE:** Provide and fix in roof, where shown, "Durabestos" Manhole moulded in Corrugated Sheet and provided with "Durabestos" Cover.

**METAL SKYLIGHTS:** Where Metal Skylights are introduced into "Durabestos" Roofing, allow for all necessary cutting and waste in corrugated roofing.  
Metal Skylights to be fixed by manufacturers.

## WALLING AND ACCESSORIES.

**WALLING:** Cover Walling as indicated with "Durabestos" Sheeting (5.75" pitch and 3' 5½" wide), fixed as for Roofing, but having a minimum end lap of 6" and 7" side lap. Girts not to exceed 72" centres.

**NOTE:** We recommend 48" centres up to head height at floor levels. (Refer Catalogue Pages 19, 33 and 34.)

**VERTICAL ANGLE MOLDS:** Finish all external angles with 8" x 8" corner molds, alternatively, fix 6" x 6" x 2", fixed neatly with ¼" galvanised bolts.  
(Refer Catalogue Page 34.)

**LOUVRE TREATMENT:** To wood or steel girts fix "Durabestos" Louvres of specified size, complete with 1" x ½" galvanised brackets. Finish with fluted apron flashing at base. (Refer Catalogue Page 34.)

**CUTTING:** Allow for cutting to waste on raking portions of wallings.



# STANDARD [3" Pitch] DURABESTOS ROOFING

## TYPICAL SPECIFICATION.

### ROOFING, WALLING AND ACCESSORIES.

**"STANDARD" ROOFING:** Supply and fix "Standard" (3" pitch) "Durabestos" sheets, 2' 7½" wide, as indicated on drawings, to wood purlins (or battens) with 1½" corrugations side lap and minimum end lap of 6", fixed by means of galvanised roofing screws, galvanised washers and felt washers, well bedded on plastic asbestos bitumen compound. All screw holes to be drilled 1/32" larger than diameter of screws used. Purlin spacing not to exceed 3' 0".

The entire roofing to be supplied and fixed by Wunderlich Limited.

**NOTE:** In lieu of wood purlins or battens, steel angles or channels may be employed, the roofing being fixed with (a) galvanised hook bolts, (b) galvanised bolts and clips, or (c) steel purlins drilled and tapped and roofing fixed with galvanised ¼" set bolts.

**"STANDARD" WALLING:** Fix to walls as indicated "Standard" (3" pitch) "Durabestos" sheets 2' 7½" wide fixed with minimum end lap of 4" and side lap of 1½" corrugations. Girt not to exceed 48" centres.

**CORNER MOULDINGS:** Finish all external angles with 6" x 6" x 1" "Durabestos" corner moulds (alternatively, 6" x 6" "Durabestos" corner moulds) with lead and felt washers, etc.

**RIDGING:** (a) Main ridging to be covered with "Standard" fluted 2-piece adjustable ridging, 10" x 10" section, fixed as for roofing.

Alternatively:

(b) "Durabestos" 8" x 8" plain 2-piece adjustable ridging, fixed with lead and felt washers, etc. Additional sizes 9" x 9", 10" x 10" and 12" x 12".

(c) "Durabestos" 8" x 8" plain fixed angle one-piece ridging, fixed with lead and felt washers, etc. Additional sizes, 9" x 9", 10" x 10" and 12" x 12".

**HIP CAPPING:** Hips to be covered with "Durabestos" Hip Capping similar to Ridging (b) and (c).

**NOTE:** Hip Capping and Ridging (b) and (c) to be bedded on cement mortar, set back from edges of ridging and apex piece.

**SAWTOOTH RIDGING:** Cover Sawtooth Ridging with "Durabestos" "Standard" fixed angle Sawtooth Ridging.

(a) 10" (fluted) x 9" (plain) section. **NOTE:** Additional cover given if required. Alternatively, fix

(b) "Durabestos" fixed angle Sawtooth Ridging 8" x 8", 9" x 9", 10" x 10" or 12" x 12" plain sections.

Bed type (b) as for hip capping.

**RIDGE ACCESSORIES:** Cover intersections of ridge and hips with "Durabestos" apex pieces. Fix hip starters to all hips. To ends of ridging fix special end caps.

**SIDE FLASHING:** Where parapets abut sides of parapet walls, fit 10" girth side flashing turned up to take lead over-flashing.

**GUTTER FLASHING & BIRDPROOFING:** Fix to all eaves and box gutters "Durabestos" Fluted Gutter Flashing, or, alternatively, fix snugly against underside of corrugations of sheets "Durabestos" Serrated Edge Birdproofing nailed to timber gutter bearer with galvanised nails. (Refer Catalogue Page 31 for similar type.)

**BIRDPROOFING ONLY: NOTE:** In the case of lean gutters, use fluted "Durabestos" Birdproofing Section in lieu of gutter flashing.

**PARAPET APRON FLASHING (END APRON):** Where skillion roofs abut ends of parapet walls, fit 8" x 3" "Durabestos" Fluted Parapet Apron Flashing to take lead over-flashing. (Refer Catalogue Page 31 for similar type.) **NOTE:** "Durabestos" Fluted Apron Flashing can only be used where roof abutment on wall is dead square.

**BARGE MOLD:** All verges to be covered by means of "Durabestos" Barge Mold, 12" x 12", 10" x 10", 9" x 9", 8" x 8", 9" x 4" x 1", 9" x 2" x 1", 9" x 8" x 1", or two-piece section and fixed with galvanised screws, lead and felt washers, the latter being well bedded on plastic asbestos bitumen compound. (Refer Catalogue Page 29 for similar type.)

### DRAINAGE.

**BOX GUTTERS:** Fix where indicated, "Durabestos" Box Gutters fixed by Wunderlich Limited to grades as shown. Guttering to be accurately raked to minimum fall of 1" in 12' 0". Guttering supports to be supplied and fixed by Contractor, not to exceed 2' 6" centres.

All joints to be bolted with 1½" x ¼" galvanised bolts and thoroughly sealed with plastic asbestos bitumen compound in accordance with standard practice. (Refer Catalogue Page 25.)

Outlets, Sump Outlets, Stop Ends, and/or Angles to Box Gutters to be purpose-made as required.

**EAVES GUTTERS:** Fix where indicated, "Durabestos" Eaves Guttering (fixed by Wunderlich Limited), complete with stop ends, outlets, mitres and 1" x 3/16" galvanised iron brackets. Brackets to be set accurately to required falls. All jointing to be securely sealed with bitumen compound and bolted with 1½" galvanised bolts. (Refer Catalogue Page 25.)

**DOWNPIPES:** Fit "Durabestos" Downpipes (specify size), complete with all necessary bends, shoes, offsets, spreaders and 1" x ½" galvanised brackets. Brackets to be fixed plumb and accurately to walls and collars neatly pointed. (Refer Catalogue Page 26.)

**RAINWATER HEADS:** Fit where indicated "Durabestos" Rainheads. Fix securely by means of galvanised iron brackets scribed and cut, if necessary, around flanged outlets, etc. (Refer Catalogue Pages 32, 30 and 25.)

### VENTILATION.

**VENTILATORS:** Include in roofing "Durabestos" Exhaust Ventilators complete with

(a) Roof slope bases moulded accurately to correct pitch

(b) and/or Ridge Base Section formed to ridge angle.

Flashing included. (Refer Catalogue Page 27.)

**LOUVRE TREATMENT:** To wood or steel girts fix "Durabestos" Louvres of specified size, complete with 1" x ½" galvanised brackets. Finish with fluted apron flashing at base. (Refer Catalogue Page 34.)

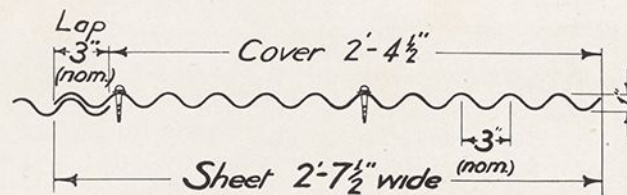
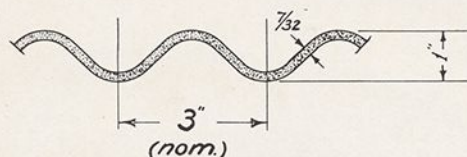
**SKYLIGHTS:** Fix where shown on details "Durabestos" Skylights, daylight size, 3' 3" x 1' 3" or 5' x 1' 3", glazed with ¼" wired cast glass, to suit standard Corrugated "Durabestos" sheets (3" nom. pitch).



# WUNDERLICH CORRUGATED DURABESTOS

STANDARD 3" Pitch (approx.)—Side Lapped 1½ Corrugations (approx. 3")

- THICKNESS — $\frac{7}{32}$ " (Nominal)  
 DEPTH —1" "  
 WIDTH —2' 7½" "  
 EFFECTIVE  
 COVER —2' 4½"  
 SIDE LAP —One and a half Corrugations  
 (Approx. 3" as shown)  
 END LAP —For Roofing 6" or more,  
 depending on position and  
 pitch of roof  
 —For Wall Siding 4"



Screws and other fixings where shown.

MINIMUM PITCH FOR END LAP OF 6"—20 degrees

MINIMUM PITCH FOR END LAP OF 9"—12½ degrees

(Under 12½ degrees use 12" End Lap—and if necessary seal the end lap with plastic Asbestos Bitumen Compound.)

STANDARD LENGTHS —See Tables below

MAX. PURLIN SPACING —ROOFING 36"

" GIRT " —WALL SIDING 48"

WOOD BATTENS (if used)—3" x 1½" or 3" x 1¼"

SUPPORTING TIMBERS —To be slightly stronger than for 24-gauge Corrugated Galvanised Iron Roofing

WEIGHT —Bulk Material 2.4 lbs. per sq. ft. approx. uncrated  
 (or approx. 240 lbs. per 100 sq. ft.) (Add 10% for crating)  
 —Fixed on roof with 6" end lap and 1½ Corrugation (approx. 3")  
 Side Lap 280 lbs. per 100 sq. ft.

USE 3" galvanised Roofing Screws where 3 thicknesses of sheet occur.

USE 2½" galvanised Roofing Screws where 2 thicknesses of sheet occur.

USE 2" galvanised Roofing Screws where 1 thickness of sheet occurs.

## STANDARD LENGTHS AND COVERING CAPACITY

1½ Corrugations (3" approx.) Side Lap

LENGTH	SHEETS REQUIRED TO COVER 100 SQ. FEET		LENGTH	SHEETS REQUIRED TO COVER 100 SQ. FEET	
	6" END LAP	9" END LAP		6" END LAP	9" END LAP
5' 0"	9.356	9.907	8' 0"	5.614	5.326
5' 6"	8.421	8.864	8' 6"	5.263	5.433
6' 0"	7.655	8.02	9' 0"	4.953	5.118
6' 6"	7.017	7.323	9' 6"	4.678	4.812
7' 0"	6.477	6.737	10' 0"	4.432	4.552
7' 6"	6.015	6.238			
Additional Area Covered by Each Sheet at Eaves					

SHEET No. 19

SERVICE SHEET No. 5118

CORRUGATED DURABESTOS

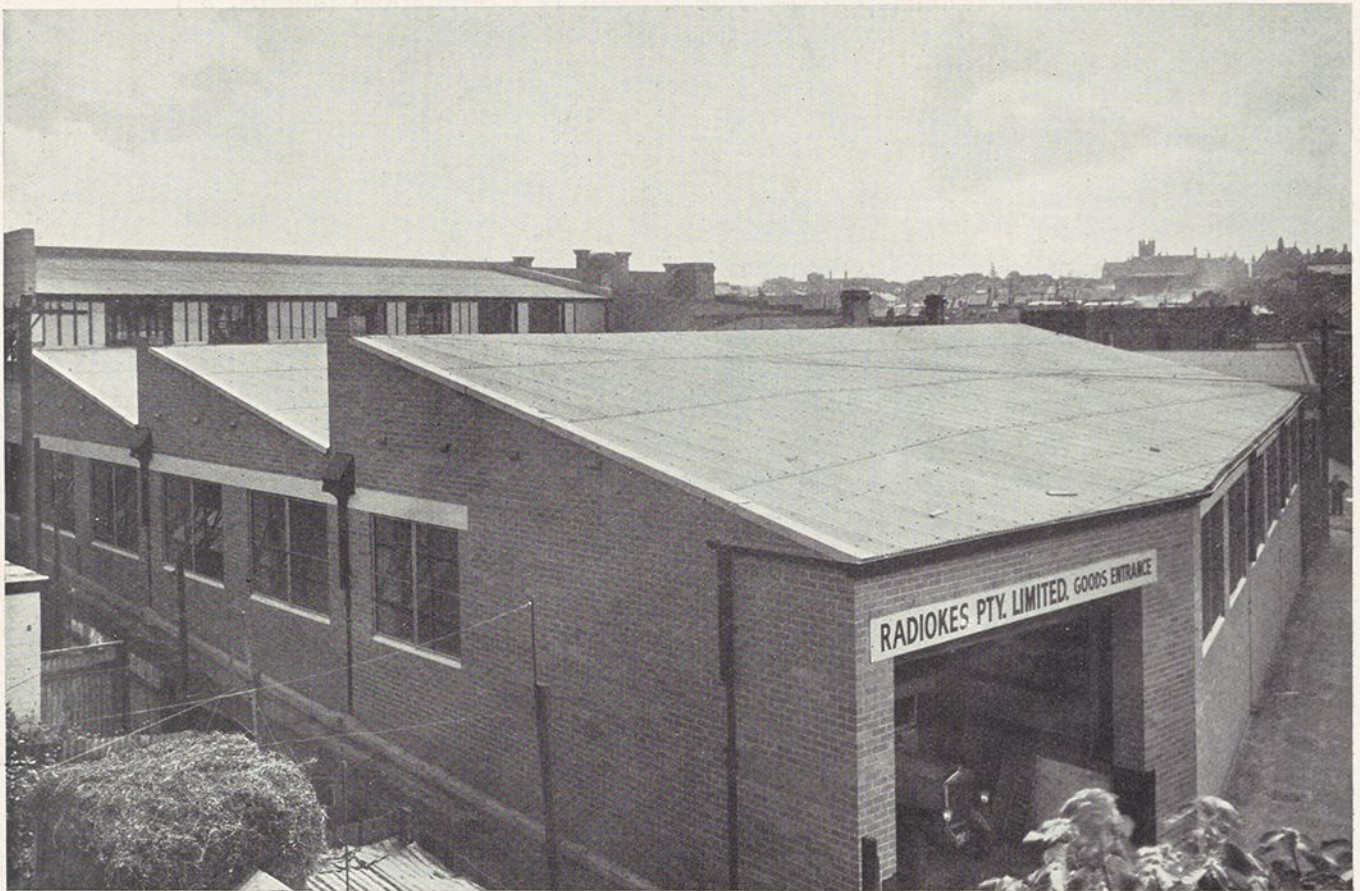
WUNDERLICH LIMITED

SHOWROOMS  
 SYDNEY, NEWCASTLE, MELBOURNE,  
 ADELAIDE, PERTH, BRISBANE,  
 HOBART, LAUNCESTON



# WUNDERLICH STANDARD CORRUGATED DURABESTOS

---



WUNDERLICH STANDARD CORRUGATED DURABESTOS ROOFING to Radiokes Pty. Ltd. new factory, Redfern, N.S.W.

Area: 9,500 sq. ft.

Architects: D. T. Morrow & Gordon.

Builders: W. Richards & Sons.

---

STANDARD CORRUGATED DURABESTOS IS IDEAL FOR USE AS A WALLSIDING





MELBOURNE CRICKET GROUND, MELBOURNE, VICTORIA

Main grandstand roofed with Wunderlich Deep Corrugated Durabestos.  
Architects: Purnell & Pearce.

Area: 100,600 sq. ft.  
Contractor: E. A. Watts.

PERMANENTLY ROOFED WITH  
**WUNDERLICH**  
DEEP CORRUGATED  
**DURABESTOS**





INTERIOR VIEW OF THE 150th ANNIVERSARY COMMEMORATIVE PAVILION, Royal Agricultural Society's Show-ground, Sydney, permanently roofed with WUNDERLICH DEEP CORRUGATED DURABESTOS. Area: 44,500 sq. ft.

NOTE.—This photograph was taken during construction of the Pavilion.

Architects: Trenchard, Smith & Maisey.

Builders: Stuart Bros.



## EXCEPTIONAL STRENGTH

IS EMBODIED IN  
**WUNDERLICH DURABESTOS**  
CORRUGATED ROOFING.

WUNDERLICH LIMITED MANUFACTURERS