



---

## **Wunderlich standard pressed steel partitions : for the subdivision of offices and all large floor areas**

AUTHOR(S)

Wunderlich Limited

PUBLICATION DATE

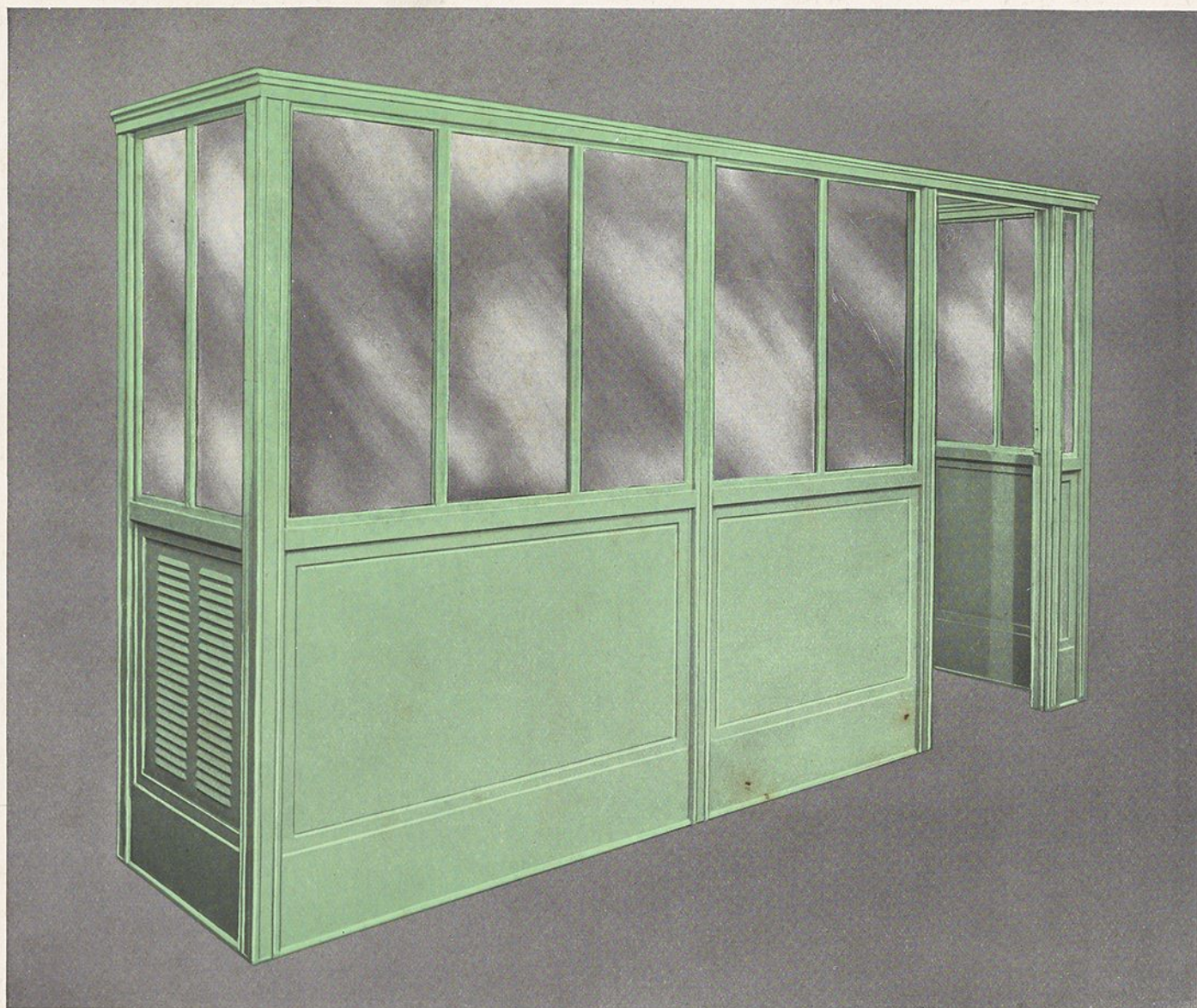
01-01-1930

HANDLE

[10536/DRO/DU:30122309](#)

Downloaded from Deakin University's Figshare repository

Deakin University CRICOS Provider Code: 00113B



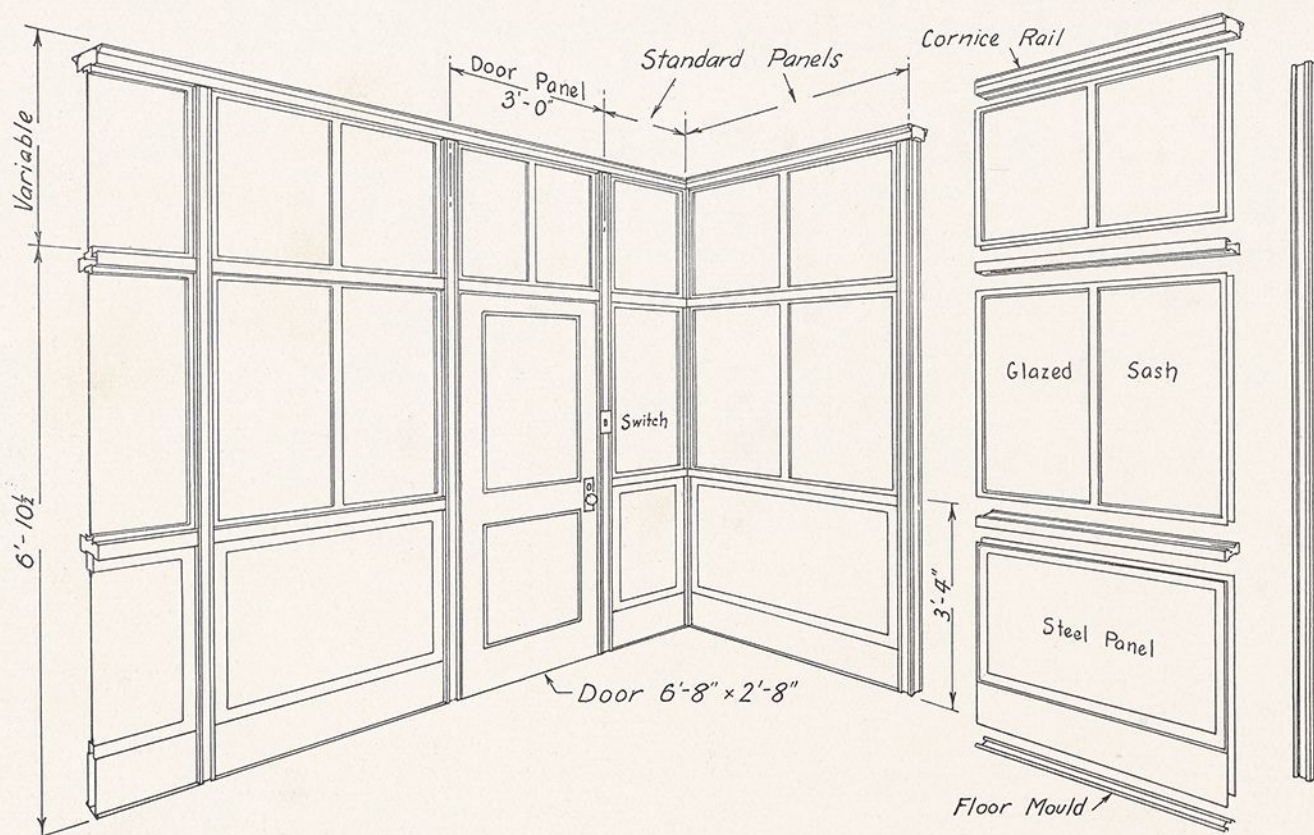
# **WUNDERLICH** **STANDARD PRESSED STEEL** **PARTITIONS**

FOR THE SUBDIVISION  
OF OFFICES AND ALL  
LARGE FLOOR AREAS.

**WUNDERLICH LIMITED, MANUFACTURERS**



# WUNDERLICH STANDARD



## DESCRIPTION AND SPECIFICATION

**General:** Wunderlich Standard Pressed Steel Partitions, as illustrated in the typical drawings, are designed for the quick and easy subdivision of large floor areas to suit the needs of the occupier, or tenants. They are strong and fire-resisting, neat in appearance, and occupy a minimum of space. The standard units, after erection, are easily dismantled for re-erection in any other position. Thus alteration to the layout of any floor area involves little more than the cost of the unskilled labour involved.

**Units:** Wunderlich Standard Pressed Steel Partitions comprise an assembly of standard units—a frame of posts and rails bolted together, a recessed mould screwed to the floor to take the lower steel panels, and sashes above dado rail infilled with glass or steel panels.

**Standard Panels and Sashes** are made in widths and **Standard Rails** in lengths to suit the following centre to centre spacing of posts:—

10"      20"      30"      36"      42"      45"      48"      60"

**Standard Doorframes**, for doors 6' 8" x 2' 8", are made to fit between posts 36" centre to centre.

These units may be combined to give lengths of partition within 3 inches of any given length, allowing ample scope in the selection of room sizes. To finish partitions against walls, columns or other fixtures, which may specifically control their length, a variable width end filler is available in widths up to 3 inches.

The partition height is constant to the door rail. This height may be increased by the introduction of standard width and uniform height sashes capped with a top rail. Where the partitions extend to the ceiling, variable depth steel panels, to suit the dimension remaining between the top rail and ceiling line, are inserted. By adhering to standard units up to the top rail, the cost of a partition treatment is reduced to a minimum.

**Standard Rails:** Partitions that do not extend to the ceiling line are finished with a moulded cornice or capping rail 2 1/2" deep. Otherwise rails are 2" deep and are bolted through end stiffeners to the posts.

**Standard Posts** are made in two sections, reinforced with stiffeners which are holed to permit the passage of wiring, and fitted with lugs for screwing to floors and, if necessary, to ceilings. Partitions may be assembled at right angles from any or all four faces. The covers are fixed last and are readily removable, to allow access to concealed wiring brought to switches, power points, telephone connections, etc., set in the posts.

**Standard Doors** are steel panelled or glazed, in one or two leaves, single or double swing. The door frames are provided with backstrips where required for standard lock striking plates and hinges. In order that door checks may be used, the rails above doors are reinforced.

**Glazing:** Glazing Beads, fixed with self-threading screws, may be set to accommodate glass of any desired thickness, or steel panels.

**Ventilation:** When the provision of ventilation or air conditioning is necessary, louvres are pressed into the steel panelling, top or bottom as required.

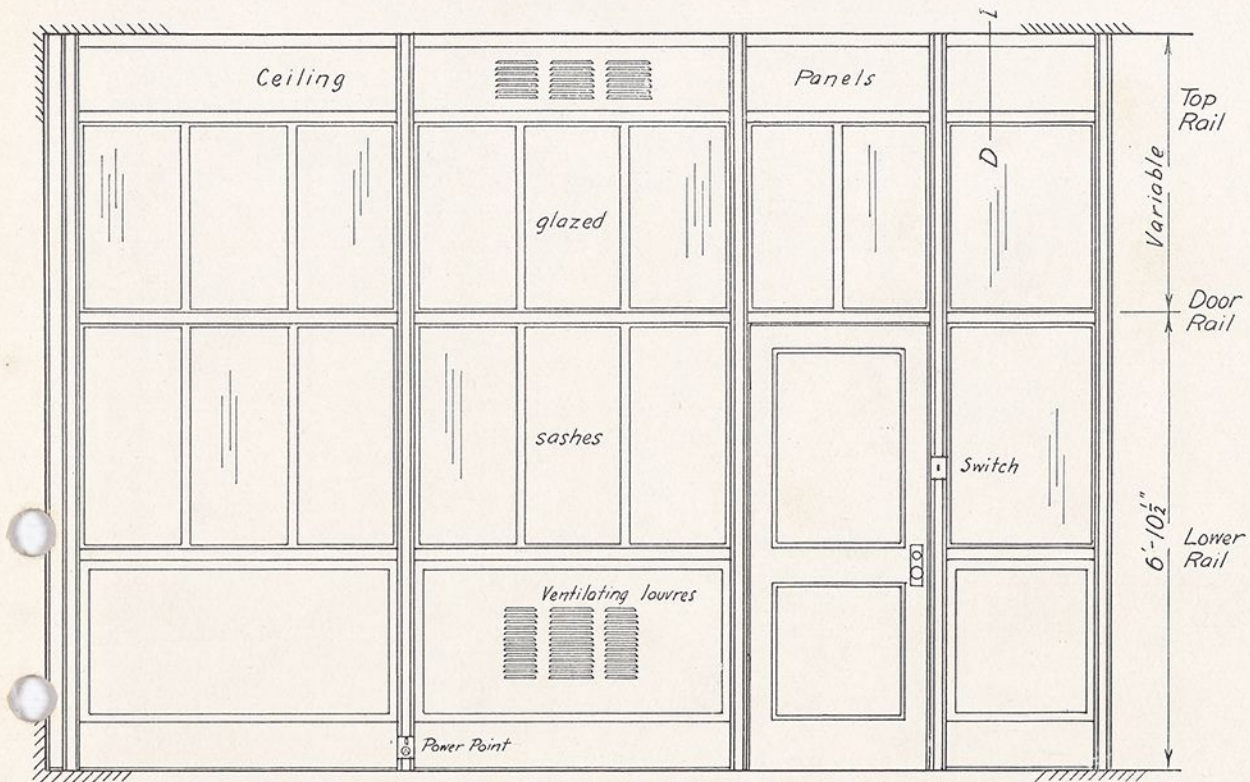
**Finish:** The partitions are finished with one coat of Dulux of a selected colour, sprayed over the necessary priming coat.

**Material:** Furniture Steel, 18-gauge, is used, excepting for the 16-gauge door frames, the 14-gauge stiffeners and the reinforcements of 3/16" plate.

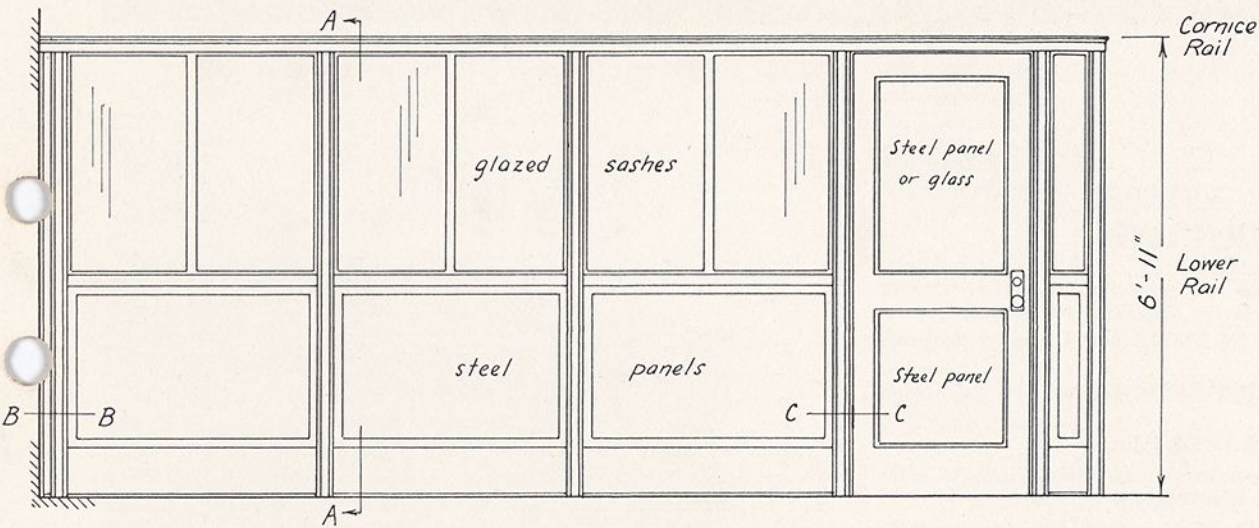
**Prices:** On Application. Full particulars, including approximate area, and any special conditions that may be encountered, should be submitted. When ordering, a dimensioned floor layout must be furnished, from which we can prepare a detailed setout using standard units.



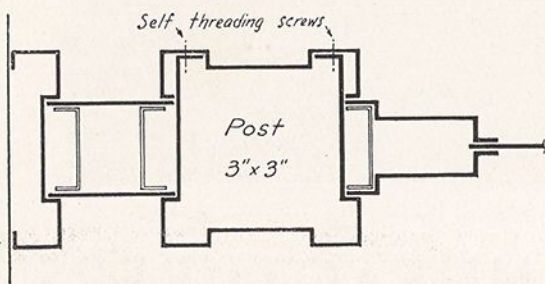
# RESSED STEEL PARTITIONS



TYPICAL ELEVATION—CEILING HEIGHT

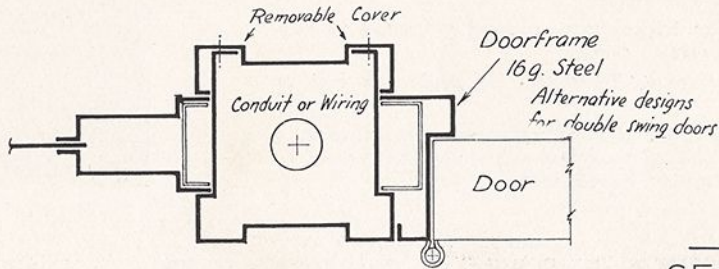


TYPICAL ELEVATION—CORNICE HEIGHT



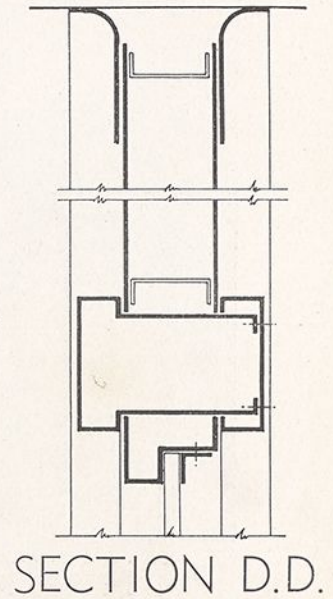
SECTION B.B.

Through Variable End Filler

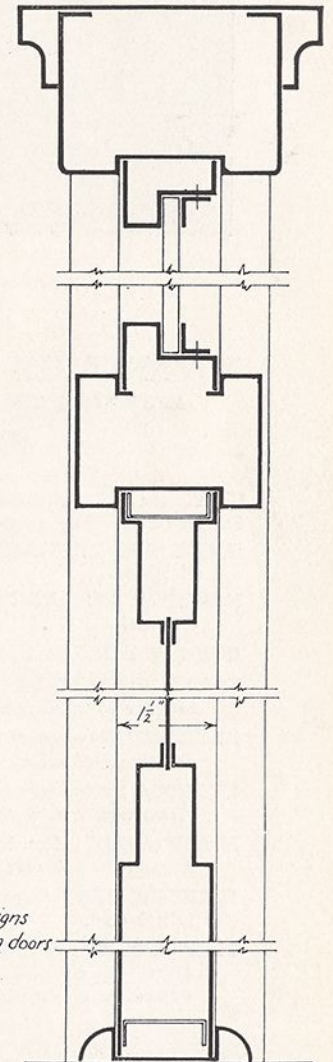


SECTION C.C.

Through Door Post



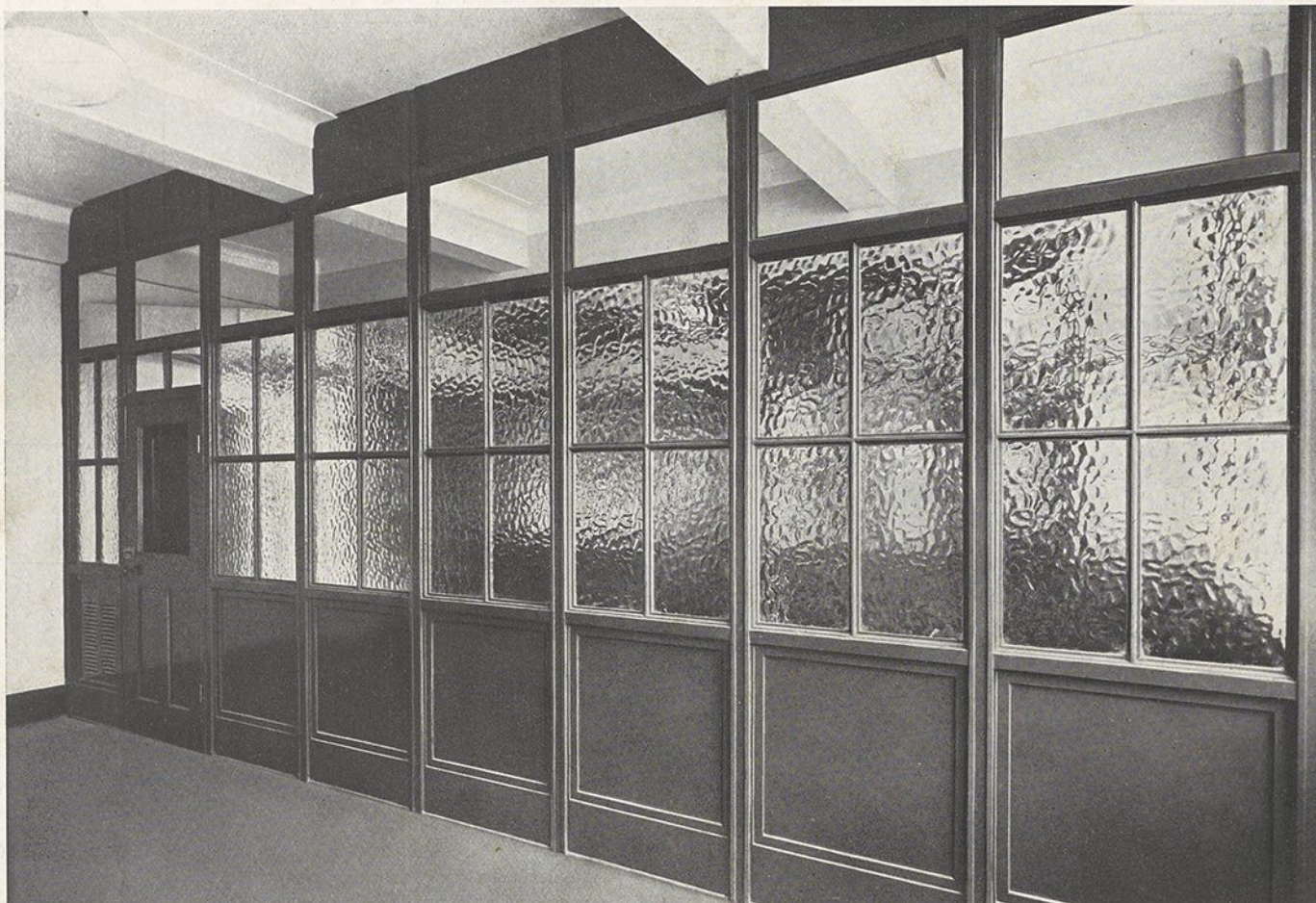
SECTION D.D.



SECTION A.A.



SpAm 691.0994 Wunder Met 10/14



Wunderlich Pressed Steel Partition to the N.S.W. Railways Administrative Building, Wynyard Square, Sydney.  
Total area used in this building, 40,000 sq. ft.

## ADVANTAGES OF WUNDERLICH STANDARD PRESSED STEEL PARTITIONS

**IDEAL** for the subdivision of large floor areas of Modern Buildings, for they possess the following characteristics:—  
**SIMPLE AND DIGNIFIED IN DESIGN** and occupy a minimum of space.

**FIRE-RESISTING AND PERMANENT;** they will not burn, warp or crack.

**QUICKLY ERECTED** by unskilled labour.

**EASILY DISMANTLED,** permitting rapid alterations to office layouts to meet new requirements.

**RE-USABLE** because of the bolted assembly of standard interchangeable units.

**HYGIENIC** for the glossy sprayed enamel finish is easily kept clean and free from dust.

**BUSINESS-LIKE.** The hollow units conceal yet make readily accessible all service wiring.

**STANDARDISED,** ensuring **ECONOMY** of production and of initial cost.

**THEY ENSURE RAPIDITY** of planning to suit any layout and **QUICK DELIVERY** of units for either new treatments or extension of existing installations.



N.S.W. Railways Administrative Building, Sydney.

# WUNDERLICH LIMITED: MANUFACTURERS

### Showrooms:

SYDNEY ..... Baptist Street, Redfern  
NEWCASTLE ..... King Street (near Watt Street)  
SOUTH MELBOURNE ..... 210 Hanna Street  
ADELAIDE ..... Grote and Morphett Streets

Lord and Short Streets ..... PERTH  
Amelia Street, Valley ..... BRISBANE  
139 Macquarie Street ..... HOBART  
71 St. John Street ..... LAUNCESTON

33217013614921