



Duchess of Connaught Canadian Red Cross Hospital, "Cliveden", Taplow, Bucks

AUTHOR(S)

J.R. Howe

PUBLICATION DATE

01-01-1917

HANDLE

[10536/DRO/DU:30144940](#)

Downloaded from Deakin University's Figshare repository

Deakin University CRICOS Provider Code: 00113B



DUCHESS OF CONNAUGHT
CANADIAN RED CROSS HOSPITAL,
"CLIVEDEN," TAPLOW, BUCKS.



GENERAL VIEW OF HOSPITAL.



SUMMER-TIME OUTSIDE ONE OF THE WARDS.



EXTERIOR VIEW OF A, B, C & D WARDS (TENNIS COURT HOSPITAL).



INSIDE ONE OF THE WARDS.



THEIR MAJESTIES' VISIT TO THE HOSPITAL, AUG. 23rd, 1917.



VISIT OF HIS MAJESTY THE KING.



VISITS OF HER MAJESTY QUEEN MARY AND THE LATE DUCHESS OF CONNAUGHT.



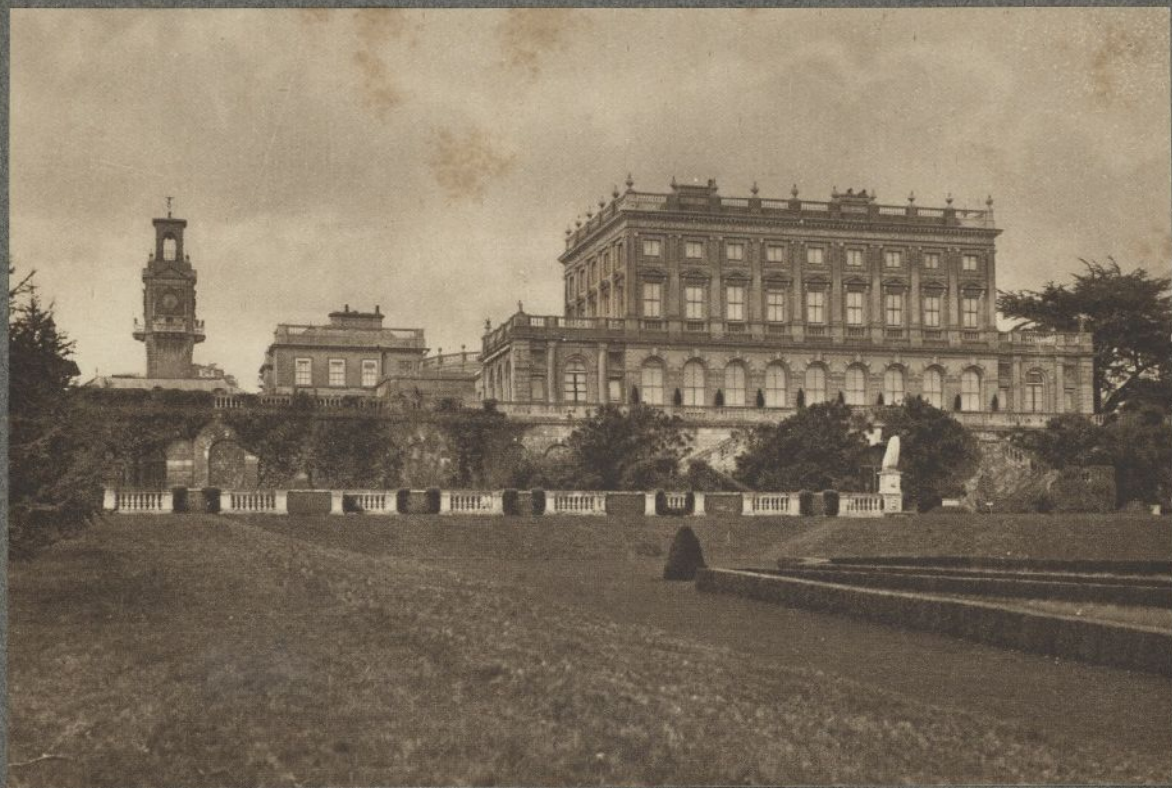
PATIENTS' DINING HALL.



PATIENTS' BILLIARD ROOM.



AMBULANCE CARS READY FOR CONVOY OF WOUNDED (OUTSIDE NURSING SISTERS' HOME).



THE MANSION, CLIVEDEN.



THE SHELL FOUNTAIN, CLIVEDEN.

Photos by Sgt. J. R. HOWE.

Printed and Published by
THE QUALIS PHOTO CO.,
733, Fulham Road, London, S.W.