



---

## Sightseeing by motor : de luxe saloon service

AUTHOR(S)

City Motor Service, Victorian Railways

PUBLICATION DATE

01-01-1941

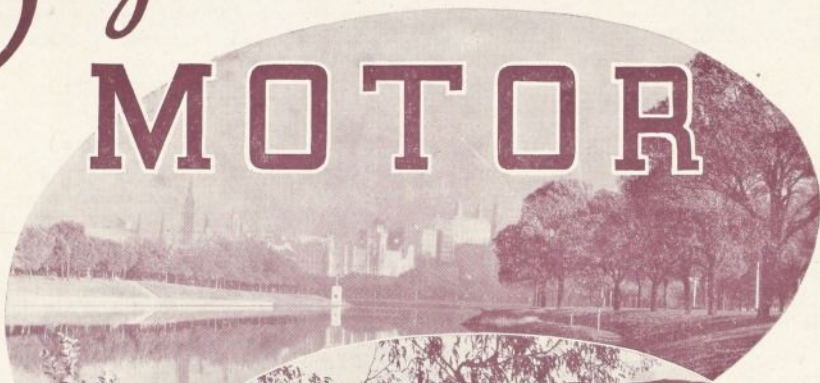
HANDLE

[10536/DRO/DU:30161138](#)

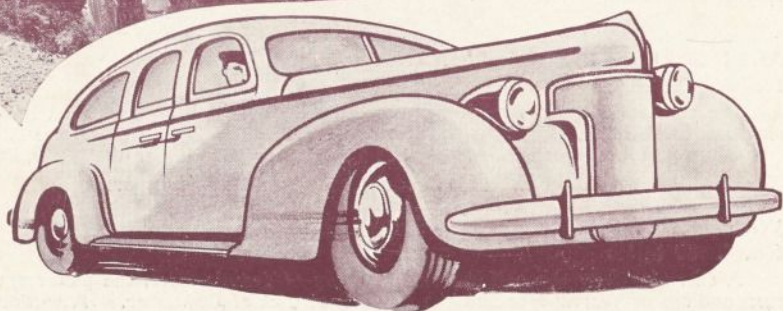
Downloaded from Deakin University's Figshare repository

Deakin University CRICOS Provider Code: 00113B

# *Sightseeing by* **MOTOR**



DE LUXE  
SALOON  
SERVICE



OPERATED BY THE CITY MOTOR SERVICE LIMITED.  
BOOKINGS AT THE VICTORIAN GOVERNMENT TOURIST BUREAU.



# SIGHTSEEING BY MOTOR

## SIGHTSEEING BY MOTOR

(Operating conditions subject to alteration without notice.)

Luxurious saloon cars supplied by the City Motor Service Limited are available for all the attractive tours featured hereunder.

For tours marked \* the Victorian Government Tourist Bureau will accept single bookings and arrange the tours subject to a minimum of 4 passengers being available.

## HALF-DAY TOURS

Cars leave Victorian Government Tourist Bureau, 272 Collins Street, at 10.15 a.m. or 2.15 p.m. The 10.15 a.m. tours will not be run unless a minimum of 4 passengers have booked for the trip. \*

### MELBOURNE'S SIGHTS AND SUBURBS

#### No. 1 30 Miles

See Melbourne's one hundred principal sights, its beautiful parks and southern suburbs, all the main thoroughfares, public buildings and historical points in the city proper, the National Museum, St. Kilda Road, the Shrine of Remembrance, Botanic Gardens, Fitzroy Gardens, Captain Cook's Cottage, The Esplanade, St. Kilda, and the attractive homes of Malvern and Toorak. Return to the city via the picturesque Alexandra Avenue.

FARE ... 5/- each

### THROUGH THE DANDENONG RANGES

#### No. 2. 70 Miles

A run traversing delightfully coloured fern-clad ranges, passing through Croydon and Montrose and over Mt. Dandenong (2,077 feet). Wonderful panoramic views.

Then through the charming surroundings of Olinda, Sassafras and Kallista to Belgrave, returning by way of Ferntree Gully, Oakleigh and St. Kilda Road to the city.

Among the hills of Olinda and Sassafras, the road follows a picturesque winding route through long avenues of gums and tall tree-ferns, passing sweet-scented gullies and sparkling streams.

FARE ... 12/6d. each

### ALONG THE BAYSIDE HIGHWAY TO FRANKSTON

#### No. 3. 52 Miles

The road follows the sweep of Port Phillip Bay through St. Kilda, Brighton, Sandringham, Black Rock, Beaumaris, Mentone, Mordialloc, Chelsea, Seaford and Frankston. Oliver's Hill, at Frankston, commands a fine panoramic view of the bay and the city.

FARE ... 12/6d. each, minimum 4 passengers \*

### WARRANDYTE, ON THE RIVER YARRA

#### No. 4. 50 Miles

A charming tour through the rural scenery of Templestowe, the picturesque river surroundings of Warrandyte and the orchard district of Doncaster. A section of the Yarra Boulevard is traversed on this tour.

FARE ... 11/- each, minimum 4 passengers \*

### COONARA HEIGHTS VIA BELGRAVE AND OLINDA

#### No. 5. 70 Miles

Melbourne to Aura by way of Canterbury Road, Vermont and Wantirna, passing en route the Melbourne Cricket Ground, famous for the record-breaking crowds which cricket and football attract; residential suburbs and pleasant orchard country. Between Selby and Aura the route follows a winding road to the top of Jackson's Ridge, which reveals extensive panoramic views of Port Phillip Bay and Western Port, the mountains at the head of the Yarra and Watts River watersheds, the terraced hillsides of the ranges, the Silvan Reservoir and the charming berry orchards spread around The Patch.

The route then leads down through The Patch and up again by Coonara Heights, where arresting mountain and valley views unfold themselves as the road rises.

On the return journey from Olinda, a gently graded road is traversed through Sassafras and down to The Basin, linking up with Toorak Road, a fine residential thoroughfare, and Alexandra Avenue, a tree-lined riverside boulevard.

FARE ... 12/6d. each, minimum 4 passengers \*

## FULL-DAY TOURS

Cars leave the Victorian Government Tourist Bureau, 272 Collins Street, at 10.15 a.m.

### PORT PHILLIP BAY, THE MARINE DRIVE, ARTHUR'S SEAT

#### No. 6. 90 Miles

The wide eastern curve of Port Phillip Bay is followed through charming seaside residential areas and holiday resorts. The Marine Drive from Mornington to Dromana, cut from the side of the cliffs, winds and curves for 11 miles.

Arthur's Seat, above Dromana, provides unsurpassed views of Port Phillip Bay and Western Port.

On the return journey, the city is approached by Dandenong Road, one of Melbourne's outstanding boulevards.

FARE ... 21/- each, minimum 4 passengers \*

### DANDENONG RANGES, SIR COLIN MACKENZIE FAUNA SANCTUARY, YARRA BOULEVARD

#### No. 7. 110 Miles

The route follows a mountain highway across the summit of the tree-clad Dandenongs, descends through Lilydale to the Yarra Valley and the Sir Colin MacKenzie Sanctuary at Healesville, where can be viewed in their natural surroundings emus, wallabies, kangaroos, koalas, the platypus and other native animals and birds. The final stage of the tour is along the Yarra Boulevard, a magnificent riverside drive following the course of the River Yarra.

FARE ... 23/- each, minimum 4 passengers \*

Admission to Sanctuary 6d. extra.

### COMBINED MELBOURNE SIGHTS AND SUBURBS, AND DANDENONGS

#### No. 8. 100 Miles

Including the best features of the Melbourne Sights and Suburbs, and Dandenongs tours.

FARE ... 17/6d. each, minimum 4 passengers \*



919.45104 C/E / Sbm 1941

8PAM

## SORRENTO AND PORTSEA

No. 9. 120 Miles.

Sorrento and Portsea are popular seaside resorts along the coast. The route beyond Frankston passes through the delightful resorts of Dromana, Rosebud and Rye.

**FARE ... 27/6d. each, minimum 4 passengers \***



*In the Dandenongs*

## SPECIAL SUNDAY TOURS

Special tours leave the Branch Office of the Victorian Government Tourist Bureau, Flinders Street Railway Station, every Sunday.

**Full-day tour to the Dandenong Ranges and the Sir Colin MacKenzie Fauna Sanctuary at Healesville.**

Cars leave at 10 a.m., and return at 5.45 p.m. **FARE** (including lunch in Ranges and admission to the Sanctuary), **21/6d. each, minimum 4 passengers \***

**Half-day Tours to :**

Coonara Heights in the Dandenong Ranges. **FARE ... 12/6d. each, minimum 4 passengers \***

Melbourne's boulevards and historic features, including Captain Cook's Cottage, the first Governor's house and Yarra Boulevard. **FARE ... 7/6d. each, minimum 4 passengers \***

Cars leave at 2 p.m. and arrive on return at approximately 5.30 p.m.

Bookings may be made at the Victorian Government Tourist Bureau, 272 Collins Street, Melbourne (F.0404) ; at the Bureau's Branch Offices at Spencer Street and Flinders Street Railway Stations, Melbourne ; or the City Motor Service Limited, 52 Flinders Lane, Melbourne.

Hall porters at any of the leading city hotels will also arrange bookings on request.

### THE CITY MOTOR SERVICE LIMITED.

**P**OSSESSING an unrivalled service, a corps of intelligent and trained chauffeurs and guides.

The City Motor Service Limited is confidently recommended by the Victorian Government Tourist Bureau.

*Issued by The Manager, Publicity and Tourist Services, Victorian Railways, Melbourne, in conjunction with The City Motor Service Limited.*

332170137 20165