



Victoria for variety

AUTHOR(S)

Victorian Railways. Betterment and Publicity Board

PUBLICATION DATE

01-01-1938

HANDLE

[10536/DRO/DU:30161141](#)

Downloaded from Deakin University's Figshare repository

Deakin University CRICOS Provider Code: 00113B

VICTORIA

FOR VARIETY



8/11/11
919,4504
VIC/VFV

VICTORIA FOR VARIETY

VICTORIA for Variety—In this descriptive epigram is packed a wealth of interest to the tourist. In Victoria's relatively small area of 87,884 square miles may be found a chain of magnificent peaks attractive to the tourist throughout the seasons; vast forests revealing the splendid solemnity of towering trees; great rivers, numerous lakes and tinkling waterfalls; softly tinted fern gullies; sweeping pasture lands, prosperous farms, smiling gardens and vineyards; extraordinary limestone caves of singular beauty and extent; a springtime array of wildflowers unsurpassed in the Southern Hemisphere; the amazing range and oddity of the Australian fauna; and 700 miles of golden coastline offering all the pleasures of bathing from thrilling surfing to a quiet swim in a sheltered bay.

Victorian Railways Print.

THE attractiveness of Victoria to the tourist is that no resort is very far away—that is, from the metropolis. A few hours will bring the visitor to the 50-mile chain of the Gippsland Lakes; the Buchan Caves; the Grampians Mountains, Victoria's Wildflower Garden; and the splendours of the north-eastern mountain regions—Mts. Feathertop, Hotham, St. Bernard, Bogong, Buller and Mt. Buffalo National Park. Nearer Melbourne are Daylesford and Hepburn Springs, the Spa Centre of Australia; the glorious mountain resorts of Healsville, Warburton, Marysville, and the Dandenong Ranges; the marvellous scenery of Bulga Park and Tarra Valley Park, Yarram; and the all-the-year seaside resorts of Lorne, Cowes, Inverloch, Queenscliff, Point Lonsdale, Ocean Grove, Barwon Heads, Port Campbell, Apollo Bay and the bayside haunts of Port Phillip.

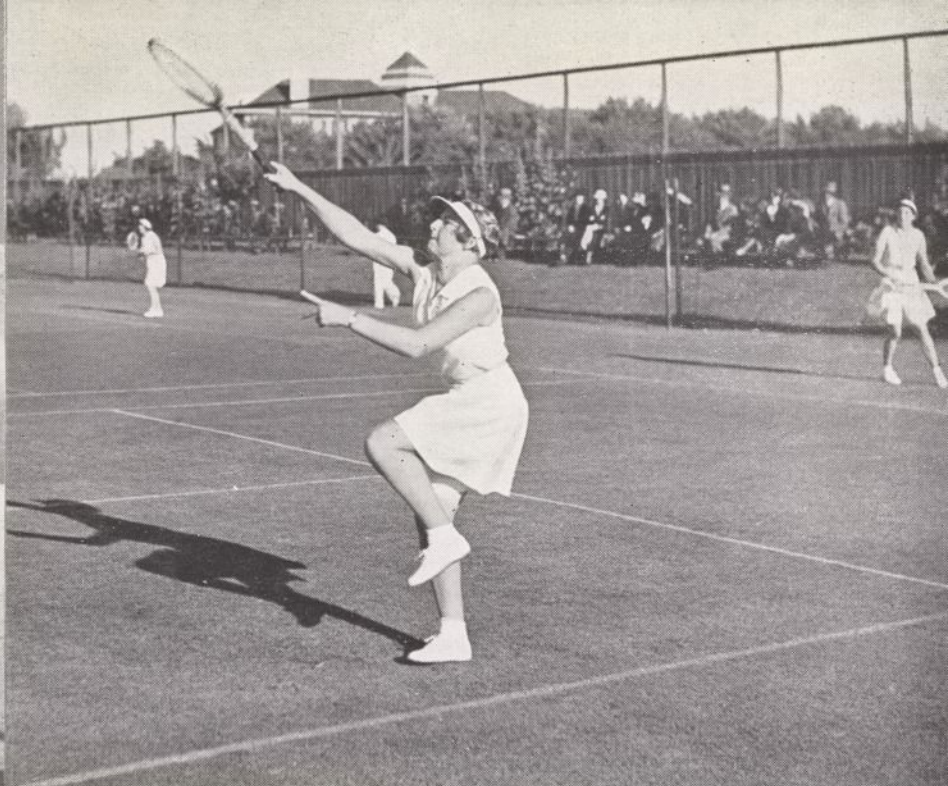
Issued by the Betterment and Publicity Board, Victorian Railways, Melbourne.

THEN there are the provincial cities of Ballarat, Bendigo, Geelong and Mildura. Ballarat, noted for its lake, its fishing, its wide streets and bracing climate; Bendigo, celebrated for its splendid processions of sunny days; Geelong, flourishing picturesquely on the attractive Corio Bay; and Mildura, announcing its significance in the glory of its fruits. Finally comes Melbourne, easily the most imposing city in the Commonwealth. In its gardens and in the width and beauty of its tree-fringed streets and boulevards it challenges the finest cities in the world. Melbourne, with its shops, theatres and restaurants, is always an experience. In it you can spend a delightful holiday and leisurely take note of the "patiently created loveliness" which is its outstanding characteristic.

June, 1938

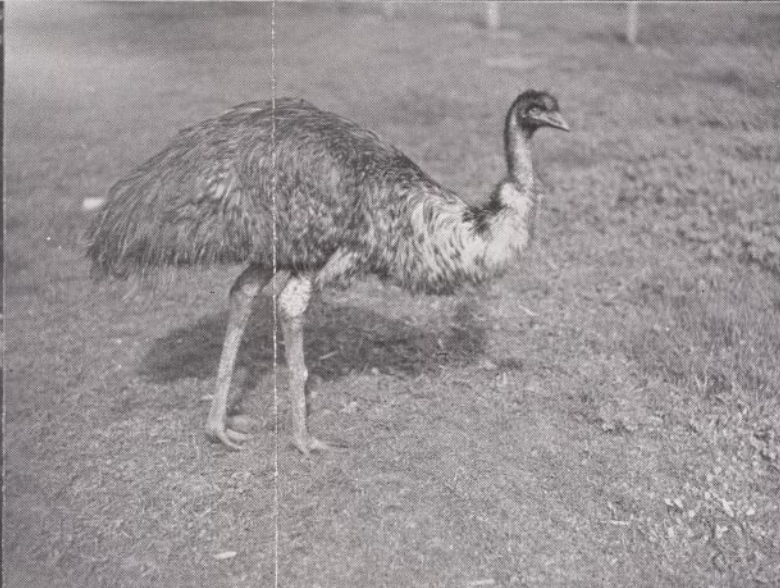
3265—38

33217013719308



VICTORIA

FOR VARIETY





VICTORIA OFFERS
EVERYTHING